

## List of pages in this Trip Kit

Trip Kit Index

Airport Information For ZSQD

Terminal Charts For ZSQD

Revision Letter For Cycle 26-2016

Change Notices

Notebook

## General Information

Location: QINGDAO CHN  
ICAO/IATA: ZSQD / TAO  
Lat/Long: N36°15.9', E120°22.4'  
Elevation: 33 ft

Airport Use: Public  
Daylight Savings: Not Observed  
UTC Conversion: -8:00 = UTC  
Magnetic Variation: 6.0°W

Fuel Types: Jet, Jet A-1  
Repair Types: Minor Airframe, Minor Engine  
Customs: Yes  
Airport Type: IFR  
Landing Fee: Yes  
Control Tower: Yes  
Jet Start Unit: No  
LLWS Alert: No  
Beacon: No

Sunrise: 2309 Z  
Sunset: 0851 Z

## Runway Information

Runway: 17  
Length x Width: 11155 ft x 148 ft  
Surface Type: asphalt  
TDZ-Elev: 32 ft  
Lighting: Edge, ALS, Centerline

Runway: 35  
Length x Width: 11155 ft x 148 ft  
Surface Type: asphalt  
TDZ-Elev: 33 ft  
Lighting: Edge, ALS, Centerline

## Communication Information

ATIS: 127.200  
Qingdao Tower: 124.300 Secondary  
Qingdao Tower: 118.700  
Qingdao Delivery Ground: 121.950  
Qingdao Ground: 121.650  
Qingdao Approach: 119.775  
Qingdao Approach: 124.600 Secondary  
Qingdao Approach: 121.150  
Qingdao Approach: 119.400

**ZSQD/TAO**  
**LIUTING**

**JEPPESEN**  
5 FEB 16      10-1P

**QINGDAO, PR OF CHINA**  
**AIRPORT BRIEFING**

**1. GENERAL**

**1.1. ATIS**

D-ATIS      127.2

**1.2. TAXI PROCEDURES**

Follow me and towing services available via GND.  
TWYs A3 and D (East of A) available for ACFT with MAX wingspan 213?65m.  
TWY D (West of A) available for ACFT with MAX wingspan 171?52m.  
TWY A7 only available for ACFT to exit stands 41 thru 51 and B1 thru B3.  
TWY A8 only available for ACFT with MAX wingspan 96'/29m to taxiing into stands B1 thru B3 for parking.

**1.3. PARKING PROCEDURES**

If an ACFT may possibly cause injury or constitute a hazard to personnel or equipment around while taxiing on ground surface, a tow tractor shall be used.  
Stand 43 is forbidden to be used as taxi line.  
ACFT shall taxi in stands 17 thru 20 and 20B from TWY A6 via L6, while pushed back nose to Southeast is forbidden.  
ACFT shall not taxi into a stand on own power without guidance of a marshaller; entry into stands 5 thru 53, C1 thru C6, D1 thru D7 and 20B shall be guided by follow-me vehicle.

**1.4. OTHER INFORMATION**

RWY 17 right-hand circuit.  
Birds.  
Requirements when airspace is limited:  
Arrivals or Departures may not fly East of the line between FD - MUPIK and ABVER - LATUX.  
If aircrew consider that they cannot fulfil the requirements, pilot shall inform ATC before applying for delivery clearance.

**ZSQD/TAO**  
LIUTING

**JEPPESEN**

5 FEB 16

10-1P1

**QINGDAO, PR OF CHINA**

**AIRPORT BRIEFING**

## 2. ARRIVAL

### 2.1. APPROACH PROCEDURES

Arriving ACFT shall comply with following requirement if the airspace is limited:  
When RWY 35 is in use, ACFT shall keep the final to D6.0 IPP or D8.0 TAO at 2690?(820m) or above.

### 2.2. COMMUNICATION FAILURE PROCEDURES

#### RWY 17

Proceed to TAO according to last assigned altitude. If the designated altitude is below 5910?climb to 5910?immediately; otherwise maintain designated altitude. After passing TAO descent in holding to 1810?and land according IAP. If passing TAO at 5910?land directly according IAP.

#### RWY 35

Proceed to XDX according to last assigned altitude. If the designated altitude is below 5910?climb to 5910?immediately; otherwise maintain designated altitude. After passing XDX descent in holding to 2960?and land according IAP. If passing XDX at 5910?land directly according IAP.

### 2.3. RUNWAY OPERATIONS

Between 2300-1559 vacating RWY via TWY D is forbidden.

### 2.4. TAXI PROCEDURES

ACFT shall taxi into stands 38 and 39 from TWY A6 via L6.

## 3. DEPARTURE

### 3.1. START-UP PROCEDURES

Engine start-up during tow is forbidden.

Engine run-ups are subject to GND clearance and may only be carried out at designated location. Fast engine run-ups near boarding bridges, on apron or TWYs are strictly forbidden.

### 3.2. OTHER INFORMATION

Departing ACFT shall comply with following requirement if the airspace is limited:

When RWY 17 is in use, ACFT shall keep the upwind to D8.0 TAO at or above 2960?(900m).

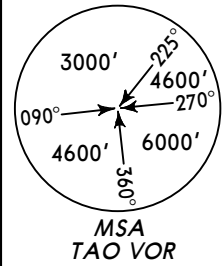
If aircrew consider that they cannot fulfil the requirements, pilot shall inform ATC before applying for delivery clearance.

ZSQD/TAO  
LIUTING

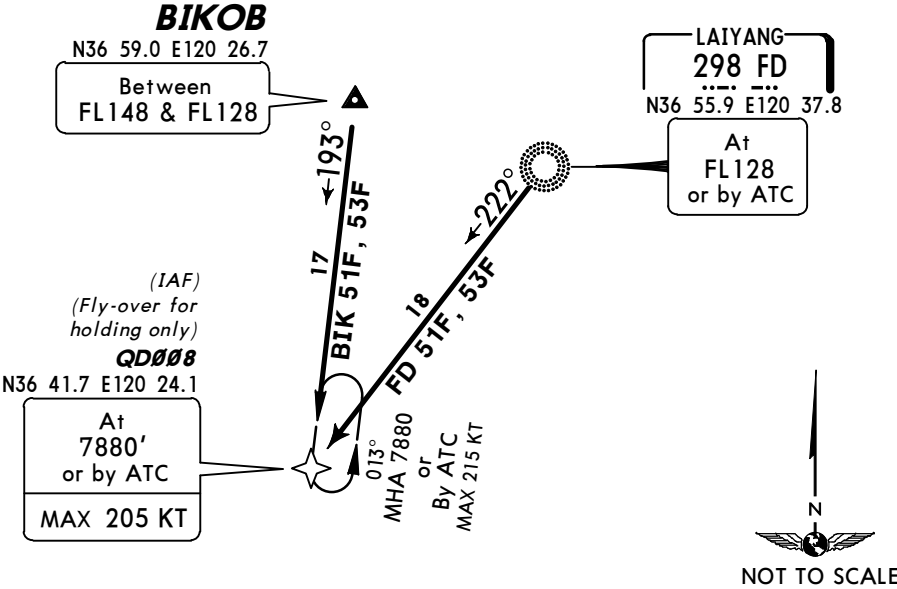
JEPPesen QINGDAO, PR OF CHINA  
16 MAY 14 10-2 Eff 29 May RNAV STAR

D-ATIS 127.2	Apt Elev 33'	Alt Set: hPa Trans level: FL118    Trans alt: 9850' 10830' - QNH 1031 hPa or above 8860' - QNH 979 hPa or below
-----------------	-----------------	--

BIK 51F, BIK 53F  
FD 51F, FD 53F  
RWY 17 RNAV ARRIVALS  
GNSS REQUIRED  
RNAV 1  
RADAR REQUIRED



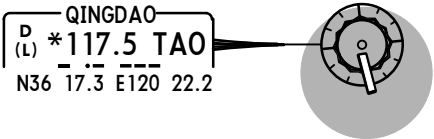
LOST COMMS ▼ LOST COMMS ▼ LOST COMMS ▼ LOST COMMS ▼ LOST COMMS ▼ LOST  
Proceed to TAO, according to the last assigned altitude  
(if the designated altitude over TAO is below 5910' climb  
to 5910' immediately; if the designated altitude is above  
5910' maintain the designated altitude), after passing  
TAO descent in holding to 1810' and land according to IAP.  
If passing TAO at 5910' land directly according to IAP.  
LOST COMMS ▲ LOST COMMS ▲ LOST COMMS ▲ LOST COMMS ▲ LOST COMMS ▲ LOST



Direct distance to  
Liuting Apt from:  
QD008 26NM

FL CONVERSION	
FL148	FL4500m
FL128	FL3900m
FL118	FL3600m

FT/METER CONVERSION	
QNH	
10830'	- 3300m
9850'	- 3000m
8860'	- 2700m
7880'	- 2400m
5910'	- 1800m
1810'	- 550m



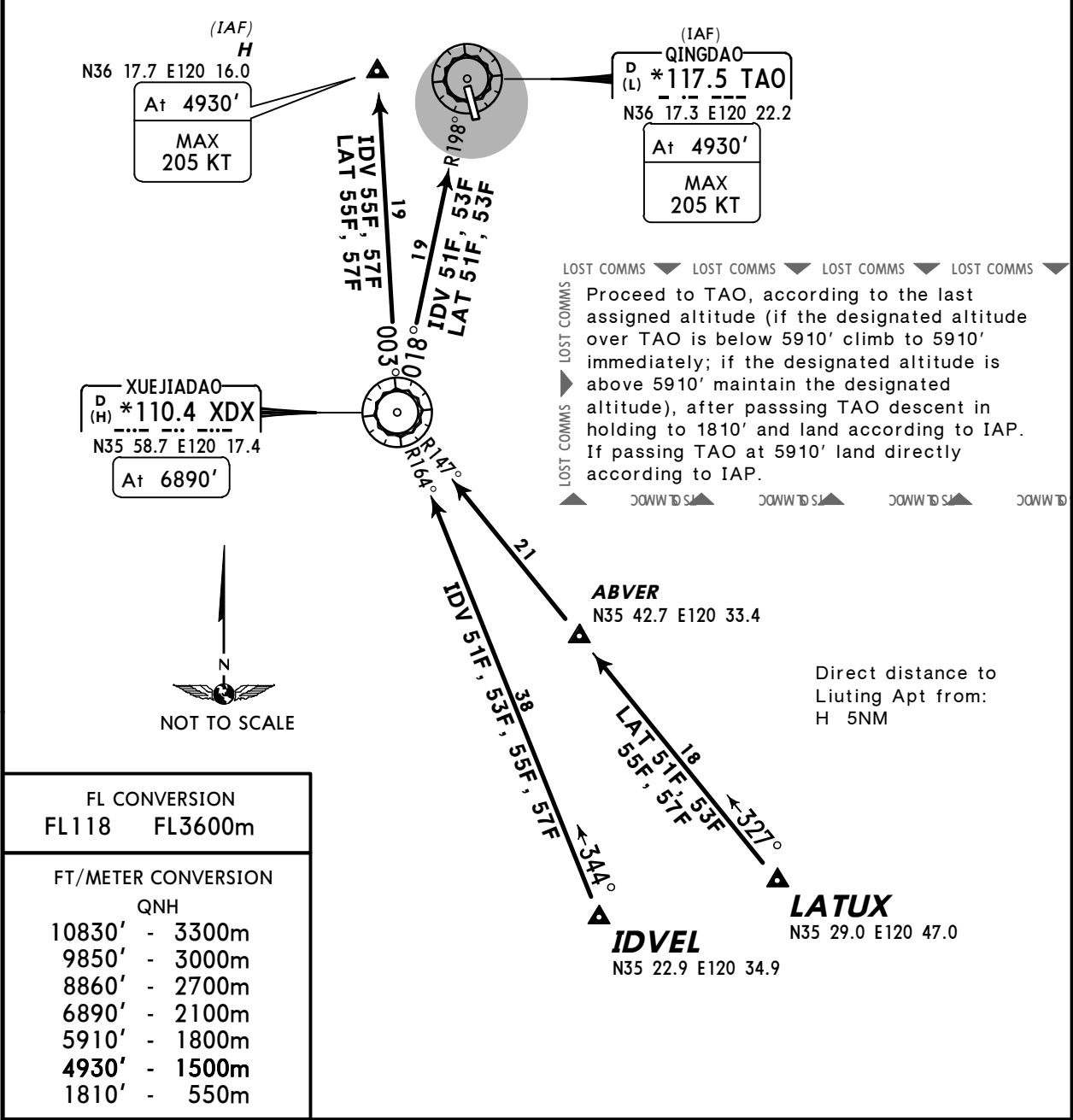
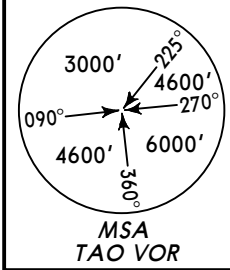
STAR	ROUTING
BIK 51F	BIKOB (FL148-; FL128+) - QD008 (7880' or by ATC; K205-).
BIK 53F BY ATC	
FD 51F	FD (FL128 or by ATC) - QD008 (7880' or by ATC; K205-).
FD 53F BY ATC	

**ZSQD/TAO**  
**LIUTING**

**JEPPESSEN QINGDAO, PR OF CHINA**  
16 MAY 14 **(10-2A)** **Eff 29 May** **RNAV STAR**

D-ATIS 127.2	Apt Elev 33'	Alt Set: hPa Trans level: FL118    Trans alt: 9850' 10830' - QNH 1031 hPa or above 8860' - QNH 979 hPa or below
-----------------	-----------------	--

**IDV 51F, IDV 53F, IDV 55F, IDV 57F**  
**LAT 51F, LAT 53F, LAT 55F, LAT 57F**  
**RWY 17 RNAV ARRIVALS**  
GNSS REQUIRED  
RNAV 1  
RADAR REQUIRED

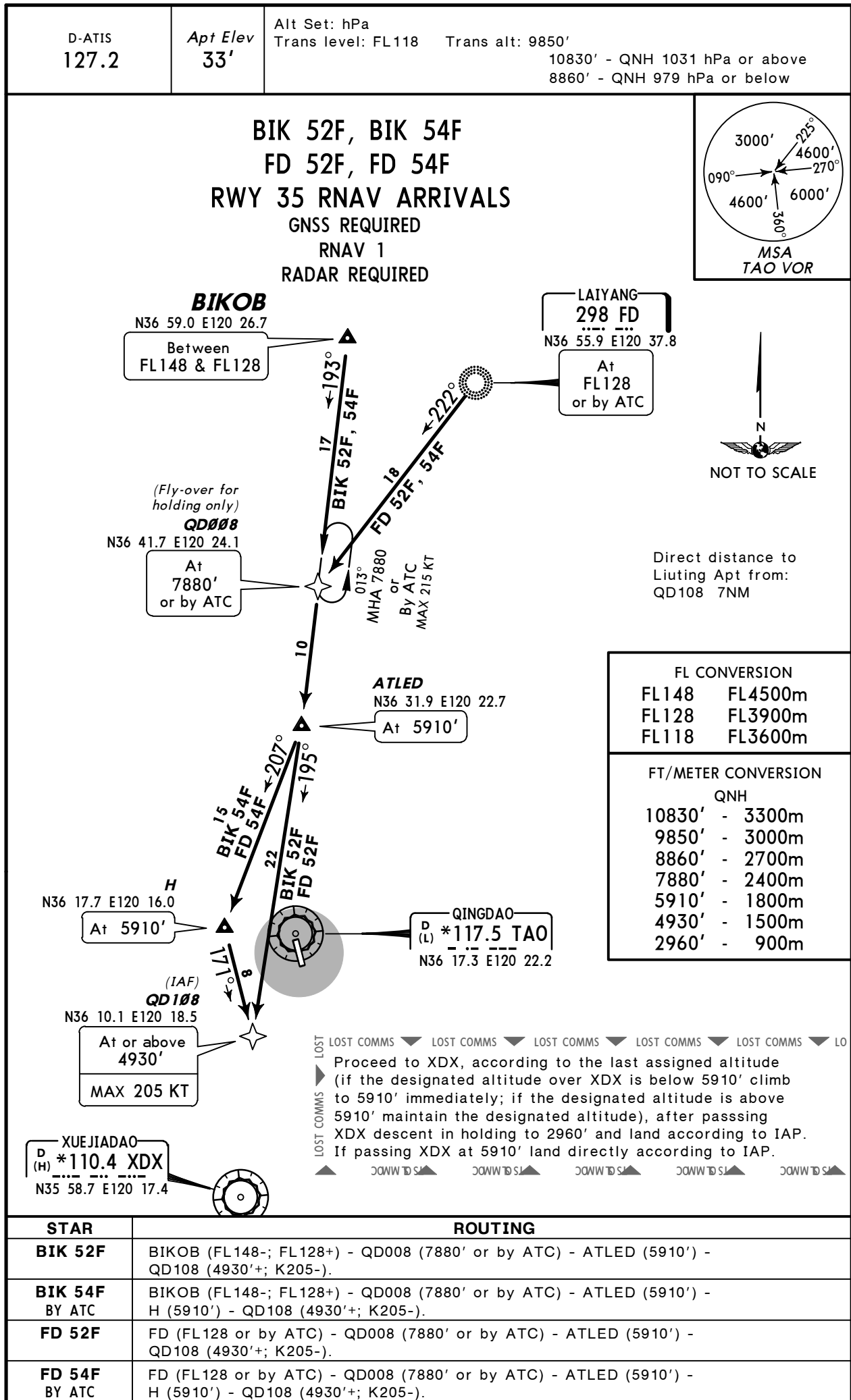


FL CONVERSION	
FL118	FL3600m
FT/METER CONVERSION	
QNH	
10830'	3300m
9850'	3000m
8860'	2700m
6890'	2100m
5910'	1800m
4930'	1500m
1810'	550m

STAR	ROUTING
<b>IDV 51F</b>	IDVEL - XDX (6890') - TAO (4930'; K205-).
<b>IDV 53F BY ATC</b>	
<b>IDV 55F BY ATC</b>	IDVEL - XDX (6890') - H (4930'; K205-).
<b>IDV 57F BY ATC</b>	
<b>LAT 51F</b>	LATUX - ABVER - XDX (6890') - TAO (4930'; K205-).
<b>LAT 53F BY ATC</b>	
<b>LAT 55F BY ATC</b>	LATUX - ABVER - XDX (6890') - H (4930'; K205-).
<b>LAT 57F BY ATC</b>	

ZSQD/TAO  
LIUTING

JEPPESSEN QINGDAO, PR OF CHINA  
16 MAY 14 10-2B Eff 29 May RNAV STAR



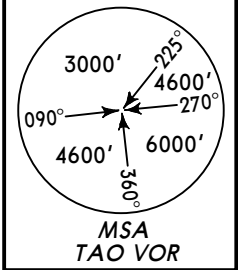


ZSQD/TAO  
LIUTING

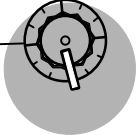
JEPPESSEN QINGDAO, PR OF CHINA  
16 MAY 14 10-2C Eff 29 May RNAV STAR

D-ATIS 127.2	Apt Elev 33'	Alt Set: hPa Trans level: FL118    Trans alt: 9850' 10830' - QNH 1031 hPa or above 8860' - QNH 979 hPa or below
-----------------	-----------------	--

IDV 52F, IDV 54F  
LAT 52F, LAT 54F  
RWY 35 RNAV ARRIVALS  
GNSS REQUIRED  
RNAV 1  
RADAR REQUIRED



QINGDAO  
D (L) \*117.5 TAO  
N36 17.3 E120 22.2



LOST COMMS    LOST COMMS    LOST COMMS    LOST COMMS    LOST COMMS

Proceed to XDX, according to the last assigned altitude (if the designated altitude over XDX is below 5910' climb to 5910' immediately; if the designated altitude is above 5910' maintain the designated altitude), after passing XDX descent in holding to 2960' and land according to IAP. If passing XDX at 5910' land directly according to IAP.

COMMS    DOWN TO SL    DOWN TO SL    DOWN TO SL    DOWN TO SL

(IAF)  
XUEJIADAO  
D (H) \*110.4 XDX  
N35 58.7 E120 17.4

At  
5910'  
or by ATC  
MAX 205 KT

(Fly-over for holding only)

QD104  
N35 57.0 E120 22.7

At  
5910'  
or by ATC

(IAF)  
QD103  
N35 58.2 E120 28.1

At or above  
3940'  
or by ATC  
MAX 205 KT

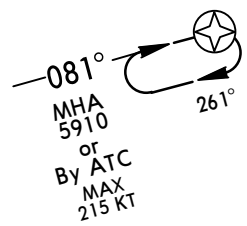
IDV 54F  
QD106  
N35 56.2 E120 18.7

IDV 52F  
QD105  
N35 51.6 E120 24.4

LAT 54F  
QD103  
N35 58.2 E120 28.1

Direct distance to  
Liuting Apt from:  
QD103 18NM  
XDX 18NM

HOLDING OVER  
QD104



FL CONVERSION  
FL118    FL3600m

FT/METER CONVERSION	
QNH	
10830'	- 3300m
9850'	- 3000m
8860'	- 2700m
5910'	- 1800m
3940'	- 1200m
2960'	- 900m

ABVER  
N35 42.7 E120 33.4

IDVEL  
N35 22.9 E120 34.9



LATUX  
N35 29.0 E120 47.0

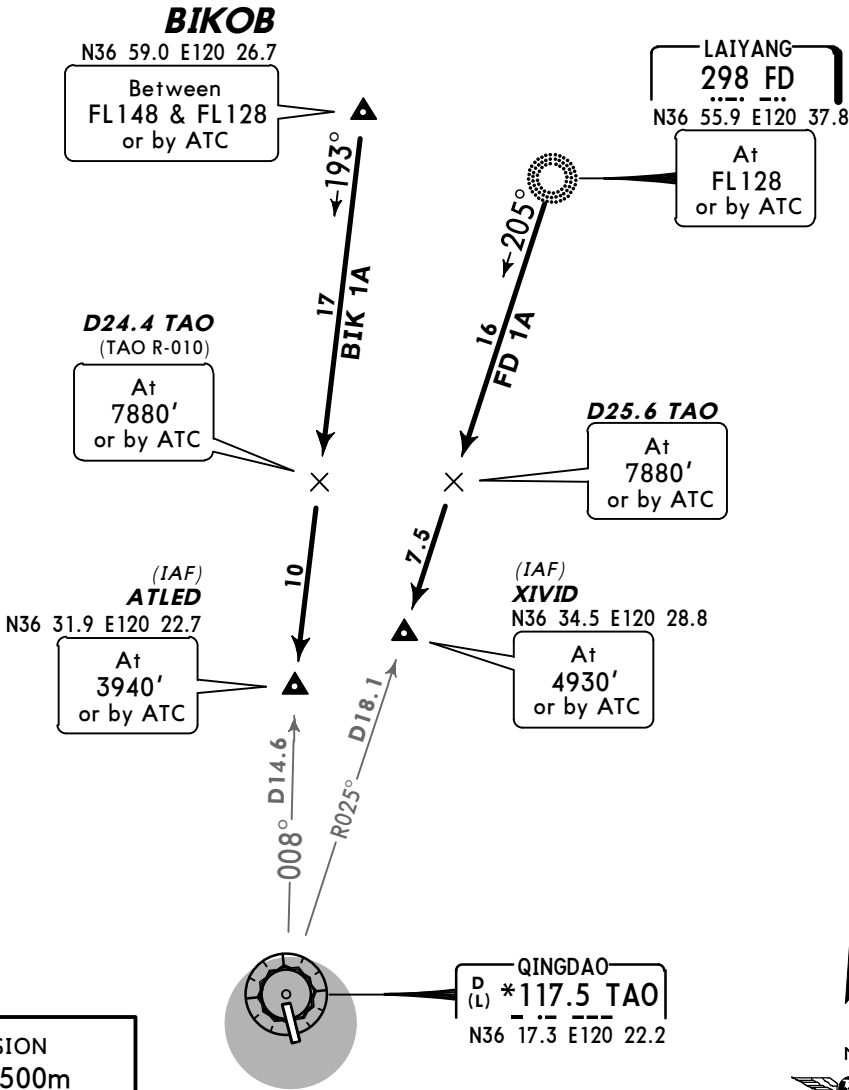
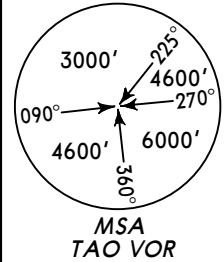
STAR	ROUTING
IDV 52F	IDVEL - QD106 - QD104 (5910' or by ATC) - QD103 (3940'+ or by ATC; K205-).
IDV 54F	IDVEL - QD106 - XDX (5910' or by ATC; K205-).
LAT 52F	LATUX - ABVER - QD105 - QD104 (5910' or by ATC) - QD103 (3940'+ or by ATC; K205-).
LAT 54F BY ATC	LATUX - ABVER - QD103 (3940'+ or by ATC; K205-).

**ZSQD/TAO**  
**LIUTING**

**JEPPESEN QINGDAO, PR OF CHINA**  
16 MAY 14 **(10-2D)** **Eff 29 May** **STAR**

D-ATIS 127.2	Apt Elev 33'	Alt Set: hPa Trans level: FL118    Trans alt: 9850' 10830' - QNH 1031 hPa or above 8860' - QNH 979 hPa or below
-----------------	-----------------	--

**BIK 1A**  
**FD 1A**  
**RWY 17 ARRIVALS**  
**~~SPEED~~ INITIAL APPROACH MAX 205 KT**



FL CONVERSION	
FL148	FL4500m
FL128	FL3900m
FL118	FL3600m

FT/METER CONVERSION	
QNH	
10830'	- 3300m
9850'	- 3000m
8860'	- 2700m
7880'	- 2400m
5910'	- 1800m
4930'	- 1500m
3940'	- 1200m
1810'	- 550m



LOST COMMS ▼ LOST COMMS ▼ LOST COMMS ▼ LOST COMMS ▼ LOST COMMS ▼ LOST COMMS ▼ LOST COMMS ▼

Proceed to TAO, according to the last assigned altitude (if the designated altitude over TAO is below 5910' climb to 5910' immediately; if the designated altitude is above 5910' maintain the designated altitude), after passing TAO descent in holding to 1810' and land according to IAP. If passing TAO at 5910' land directly according to IAP.

LOST COMMS ▲ LOST COMMS ▲ LOST COMMS ▲ LOST COMMS ▲ LOST COMMS ▲ LOST COMMS ▲ LOST COMMS ▲

**ZSQD/TAO**  
**LIUTING**

**JEPPESEN QINGDAO, PR OF CHINA**  
16 MAY 14 **10-2E** **Eff 29 May** **STAR**

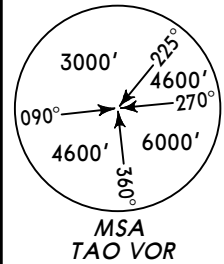
D-ATIS 127.2	Apt Elev 33'	Alt Set: hPa Trans level: FL118    Trans alt: 9850' 10830' - QNH 1031 hPa or above 8860' - QNH 979 hPa or below
-----------------	-----------------	--

**IDV 1A, LAT 1A**

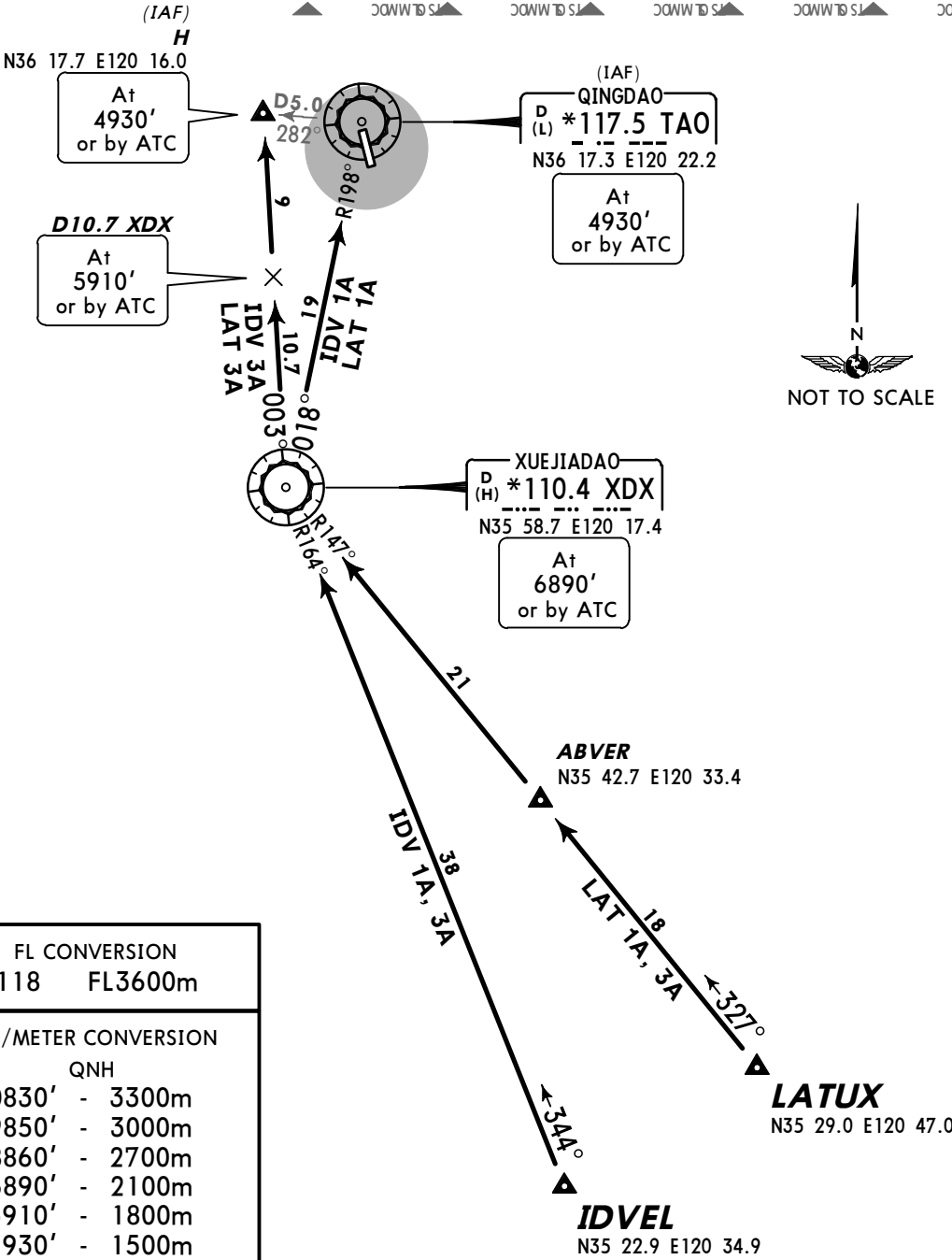
**IDV 3A, LAT 3A**  
**BY ATC**

**RWY 17 ARRIVALS**

**~~SPEED~~ INITIAL APPROACH MAX 205 KT**



LOST COMMS ▼ LOST COMMS ▼ LOST COMMS ▼ LOST COMMS ▼ LOST COMMS ▼ LOST COMMS ▼ LOST  
Proceed to TAO, according to the last assigned altitude (if the designated altitude over TAO is below 5910' climb to 5910' immediately; if the designated altitude is above 5910' maintain the designated altitude), after passing TAO descent in holding to 1810' and land according to IAP. If passing TAO at 5910' land directly according to IAP.  
▲ LOST COMMS ▲ LOST COMMS ▲ LOST COMMS ▲ LOST COMMS ▲ LOST COMMS ▲ LOST COMMS ▲ LOST



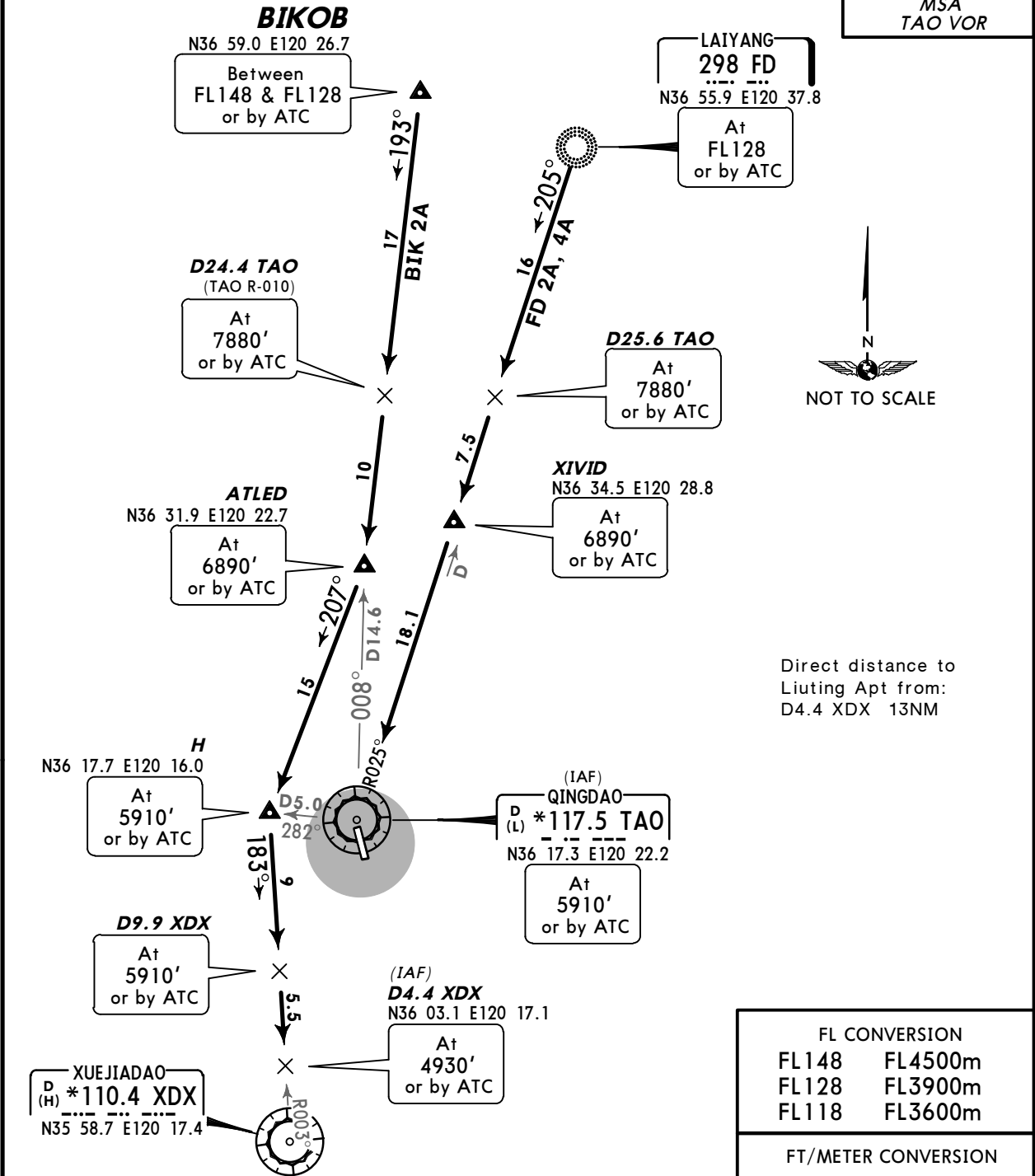
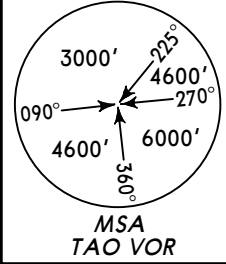
FL CONVERSION	
FL118	FL3600m
FT/METER CONVERSION	
QNH	
10830'	- 3300m
9850'	- 3000m
8860'	- 2700m
6890'	- 2100m
5910'	- 1800m
4930'	- 1500m
1810'	- 550m

**ZSQD/TAO**  
**LIUTING**

**JEPPesen QINGDAO, PR OF CHINA**  
16 MAY 14 **10-2F** **Eff 29 May** **STAR**

D-ATIS 127.2	Apt Elev 33'	Alt Set: hPa Trans level: FL118    Trans alt: 9850' 10830' - QNH 1031 hPa or above 8860' - QNH 979 hPa or below
-----------------	-----------------	--

**BIK 2A**  
**FD 2A, FD 4A**  
**RWY 35 ARRIVALS**  
**~~SPEED~~ INITIAL APPROACH MAX 205 KT**



FL CONVERSION	
FL148	FL4500m
FL128	FL3900m
FL118	FL3600m

FT/METER CONVERSION	
QNH	
10830'	- 3300m
9850'	- 3000m
8860'	- 2700m
7880'	- 2400m
6890'	- 2100m
5910'	- 1800m
4930'	- 1500m
2960'	- 900m

LOST COMMS ▼ LOST COMMS ▼ LOST COMMS ▼ LOST COMMS ▼ LOST COMMS ▼ LOST COMMS ▼ LOST COMMS ▼

Proceed to XDX, according to the last assigned altitude (if the designated altitude over XDX is below 5910' climb to 5910' immediately; if the designated altitude is above 5910' maintain the designated altitude), after passing XDX descent in holding to 2960' and land according to IAP. If passing XDX at 5910' land directly according to IAP.

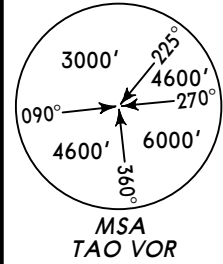
▲ COMMS TO ▲ COMMS TO ▲ COMMS TO ▲ COMMS TO ▲ COMMS TO ▲ COMMS TO ▲ COMMS TO ▲

ZSQD/TAO  
LIUTING

JEPPESSEN QINGDAO, PR OF CHINA  
16 MAY 14 10-2G Eff 29 May STAR

D-ATIS 127.2	Apt Elev 33'	Alt Set: hPa Trans level: FL118    Trans alt: 9850' 10830' - QNH 1031 hPa or above 8860' - QNH 979 hPa or below
-----------------	-----------------	--

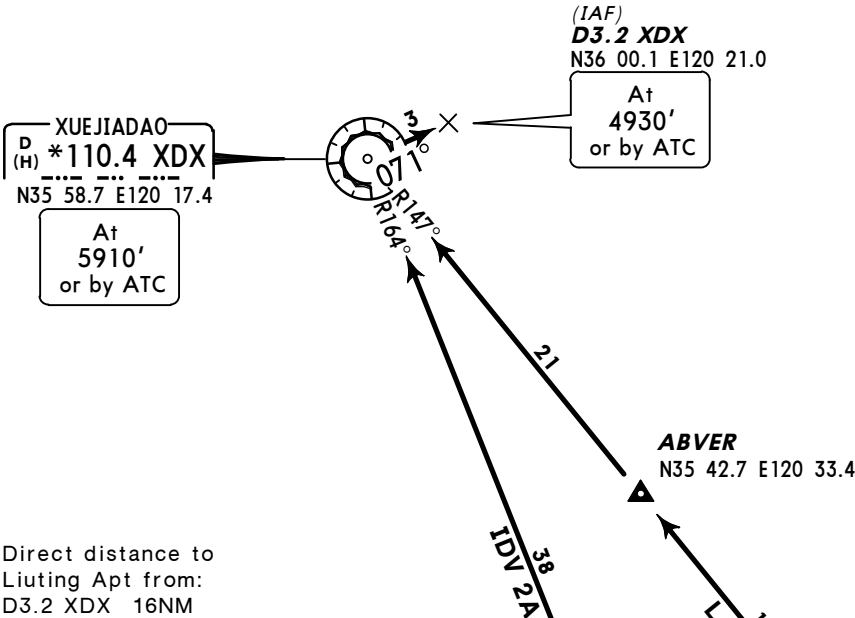
IDV 2A  
LAT 2A  
RWY 35 ARRIVALS  
**~~SPEED~~ INITIAL APPROACH MAX 205 KT**



LOST COMMS ▼ LOST COMMS ▼ LOST COMMS ▼ LOST COMMS ▼ LOST COMMS ▼ LOST  
Proceed to XDX, according to the last assigned altitude  
(if the designated altitude over XDX is below 5910' climb  
to 5910' immediately; if the designated altitude is above  
5910' maintain the designated altitude), after passing  
XDX descent in holding to 2960' and land according to IAP.  
If passing XDX at 5910' land directly according to IAP.  
▲ LOST COMMS ▲ LOST COMMS ▲ LOST COMMS ▲ LOST COMMS ▲ LOST COMMS ▲



QINGDAO  
D (L) \*117.5 TAO  
N36 17.3 E120 22.2



FL CONVERSION  
FL118    FL3600m

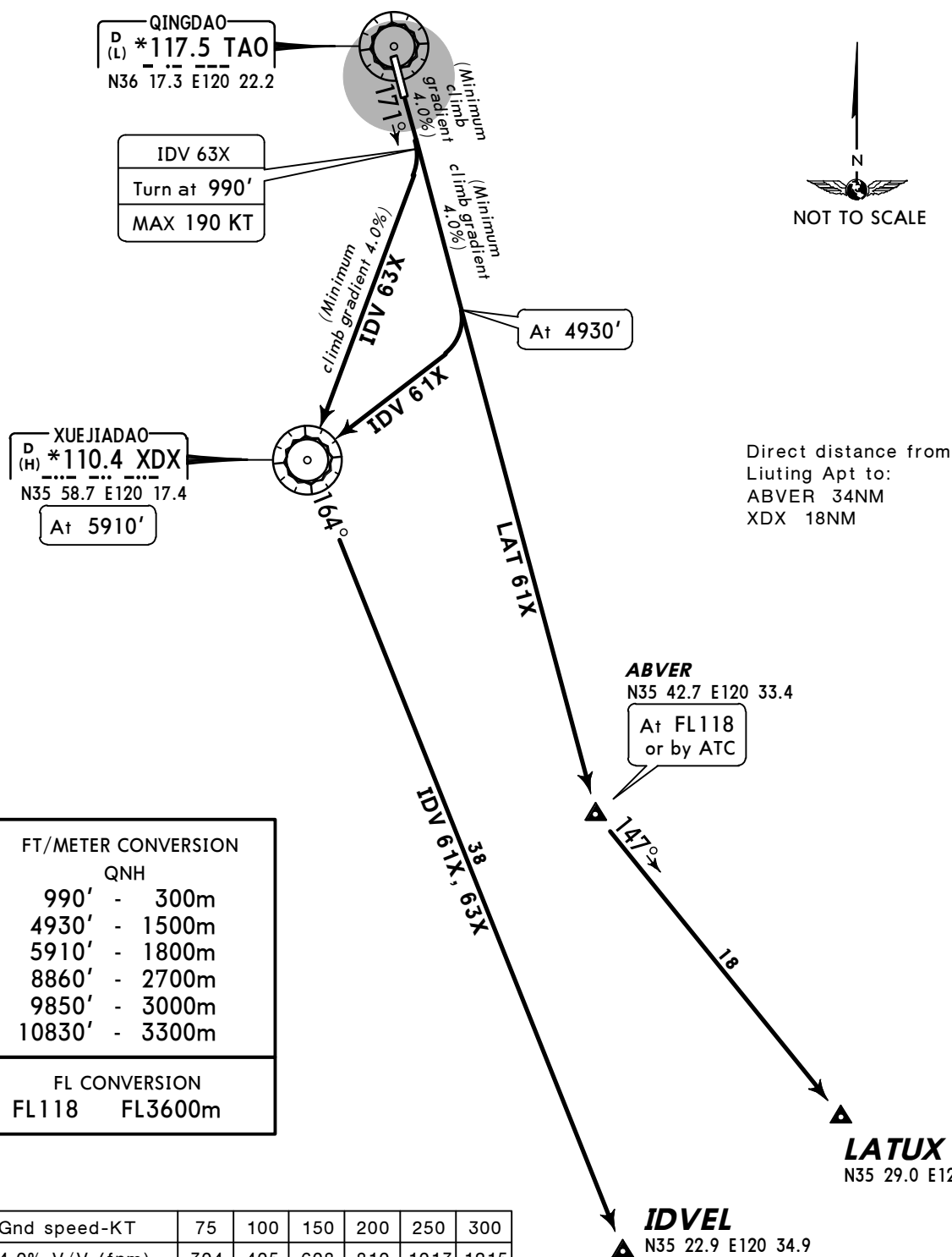
FT/METER CONVERSION  
QNH  
10830' - 3300m  
9850' - 3000m  
8860' - 2700m  
5910' - 1800m  
4930' - 1500m  
2960' - 900m



Diagram illustrating a VOR station (MSA TAO VOR) with distances and bearings to various points:

- 3000' (Distance to a point at 090°)
- 4600' (Distance to a point at 225°)
- 4600' (Distance to a point at 270°)
- 6000' (Distance to a point at 360°)

GNSS REQUIRED  
RNAV 1  
RADAR REQUIRED



FT/METER CONVERSION	
QNH	
990'	- 300m
4930'	- 1500m
5910'	- 1800m
8860'	- 2700m
9850'	- 3000m
10830'	- 3300m

FL CONVERSION	
FL118	FL3600m

Gnd speed-KT	75	100	150	200	250	300
4.0% V/V (fpm)	304	405	608	810	1013	1215

SID	ROUTING
<b>IDV 61X</b>	(4930') - XDX (5910') - IDVEL.
<b>IDV 63X</b> BY ATC	(990'; K190-) - XDX (5910') - IDVEL.
<b>LAT 61X</b>	(4930') - ABVER (FL118 or by ATC) - LATUX.

**ZSQD/TAO**  
**LIUTING**

**JEPPESSEN QINGDAO, PR OF CHINA**  
25 APR 14 **(10-3B)** **Eff 1 May** **RNAV SID**

**Apt Elev**  
**33'**

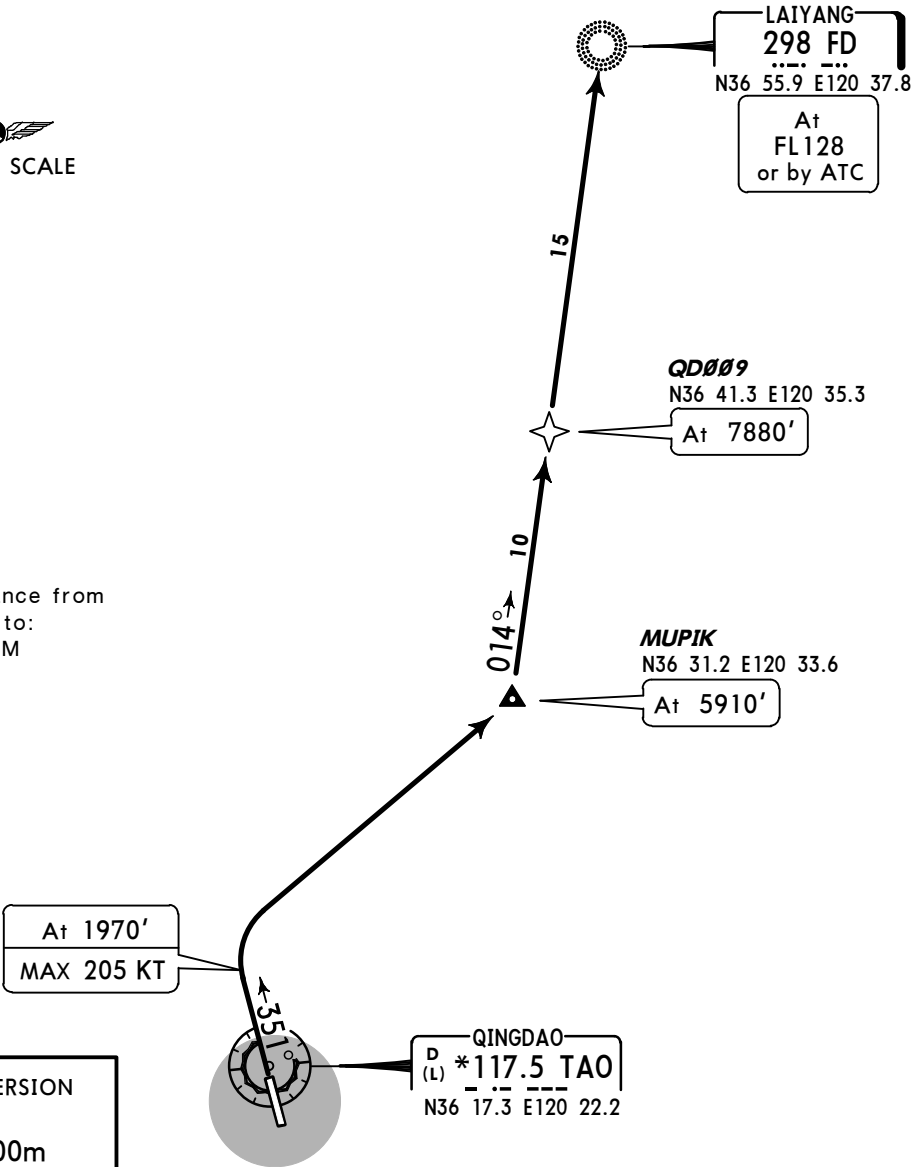
Trans level: FL118    Trans alt: 9850'  
10830' - QNH 1031 hPa or above  
8860' - QNH 979 hPa or below

MSA  
TAO VOR

**FD 62X**  
**RWY 35 RNAV DEPARTURE**  
GNSS REQUIRED  
RNAV 1  
RADAR REQUIRED



Direct distance from  
Liuting Apt to:  
MUPIK 18NM



FT/METER CONVERSION	
QNH	
1970'	- 600m
5910'	- 1800m
7880'	- 2400m
8860'	- 2700m
9850'	- 3000m
10830'	- 3300m

FL CONVERSION	
FL118	FL3600m
FL128	FL3900m

**ROUTING**  
(1970'; K205-) - MUPIK (5910') - QD009 (7880') - FD (FL128 or by ATC).



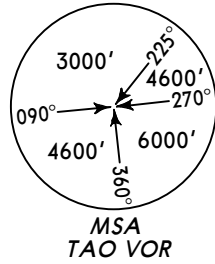
© JEPPESEN, 2014. ALL RIGHTS RESERVED.

**ZSQD/TAO**  
**LIUTING**

**JEPPesen QINGDAO, PR OF CHINA**  
25 APR 14 **(10-3D)** **Eff 1 May** **SID**

*Apt Elev*  
**33'**

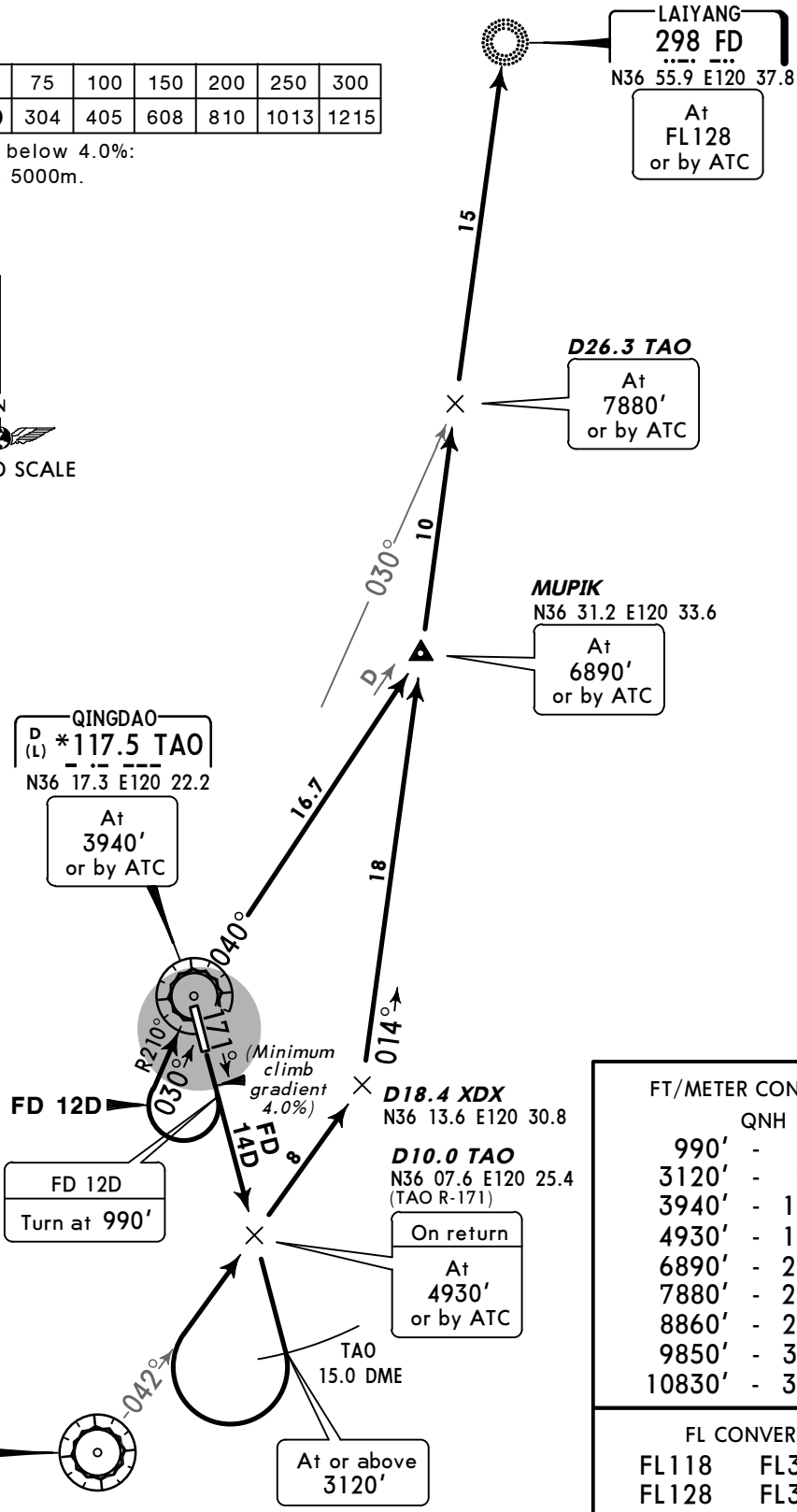
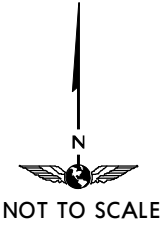
Trans level: FL118    Trans alt: 9850'  
10830' - QNH 1031 hPa or above  
8860' - QNH 979 hPa or below  
Departure turn speed MAX 190 KT.



**FD 12D**  
**FD 14D**  
**BY ATC**  
**RWY 17 DEPARTURES**

Gnd speed-KT	75	100	150	200	250	300
4.0% V/V (fpm) ①	304	405	608	810	1013	1215

① If climb gradient below 4.0%:  
Ceiling 280m/VIS 5000m.



FT/METER CONVERSION		
QNH		
990'	-	300m
3120'	-	950m
3940'	-	1200m
4930'	-	1500m
6890'	-	2100m
7880'	-	2400m
8860'	-	2700m
9850'	-	3000m
10830'	-	3300m

FL CONVERSION	
FL118	FL3600m
FL128	FL3900m



© JEPPESEN, 2014. ALL RIGHTS RESERVED.

**ZSQD/TAO**  
**LIUTING**

**JEPPESSEN QINGDAO, PR OF CHINA**  
25 APR 14 **10-3F** **Eff 1 May** **SID**

Apt Elev  
33'

Trans level: FL118    Trans alt: 9850'

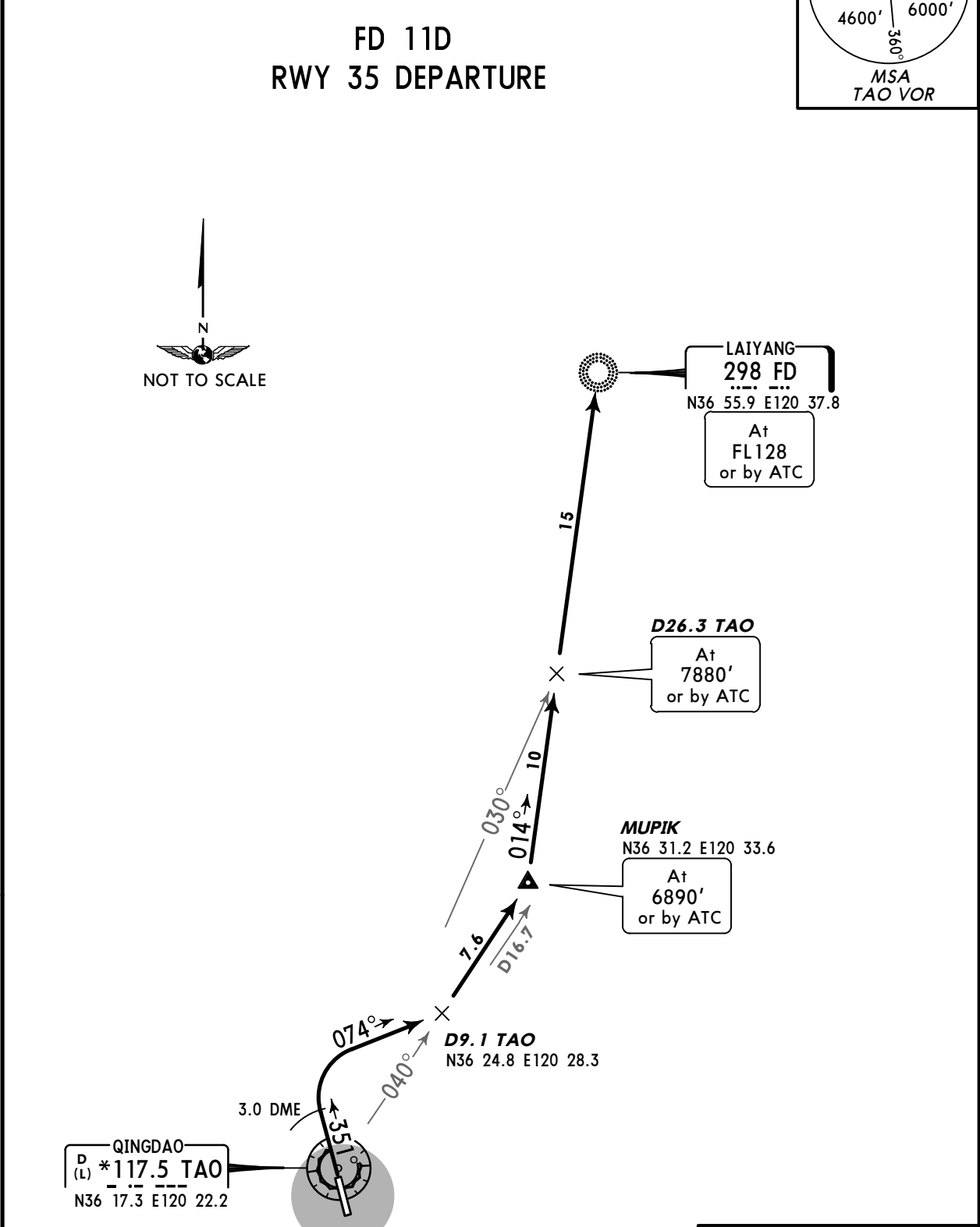
10830' - QNH 1031 hPa or above  
8860' - QNH 979 hPa or below

Departure turn speed MAX 205 KT.

MSA  
TAO VOR

FD 11D  
RWY 35 DEPARTURE

NOT TO SCALE



FT/METER CONVERSION	
QNH	
6890'	- 2100m
7880'	- 2400m
8860'	- 2700m
9850'	- 3000m
10830'	- 3300m

FL CONVERSION	
FL118	FL3600m
FL128	FL3900m



ZSQD/TAO

Apt Elev 33'  
N36 15.9 E120 22.4

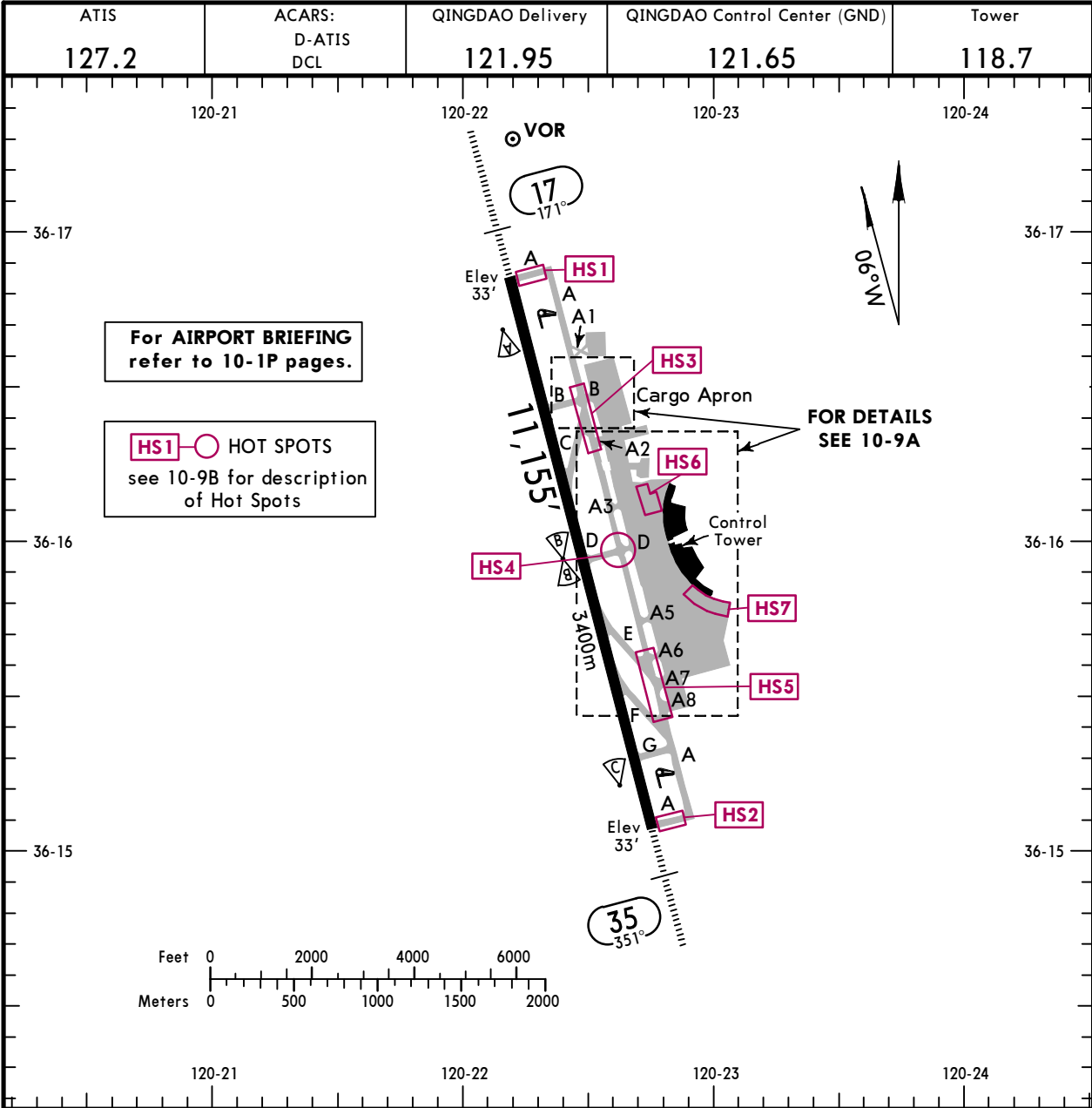


JEPPESSEN

QINGDAO, PR OF CHINA

16 DEC 16 10-9

LIUTING



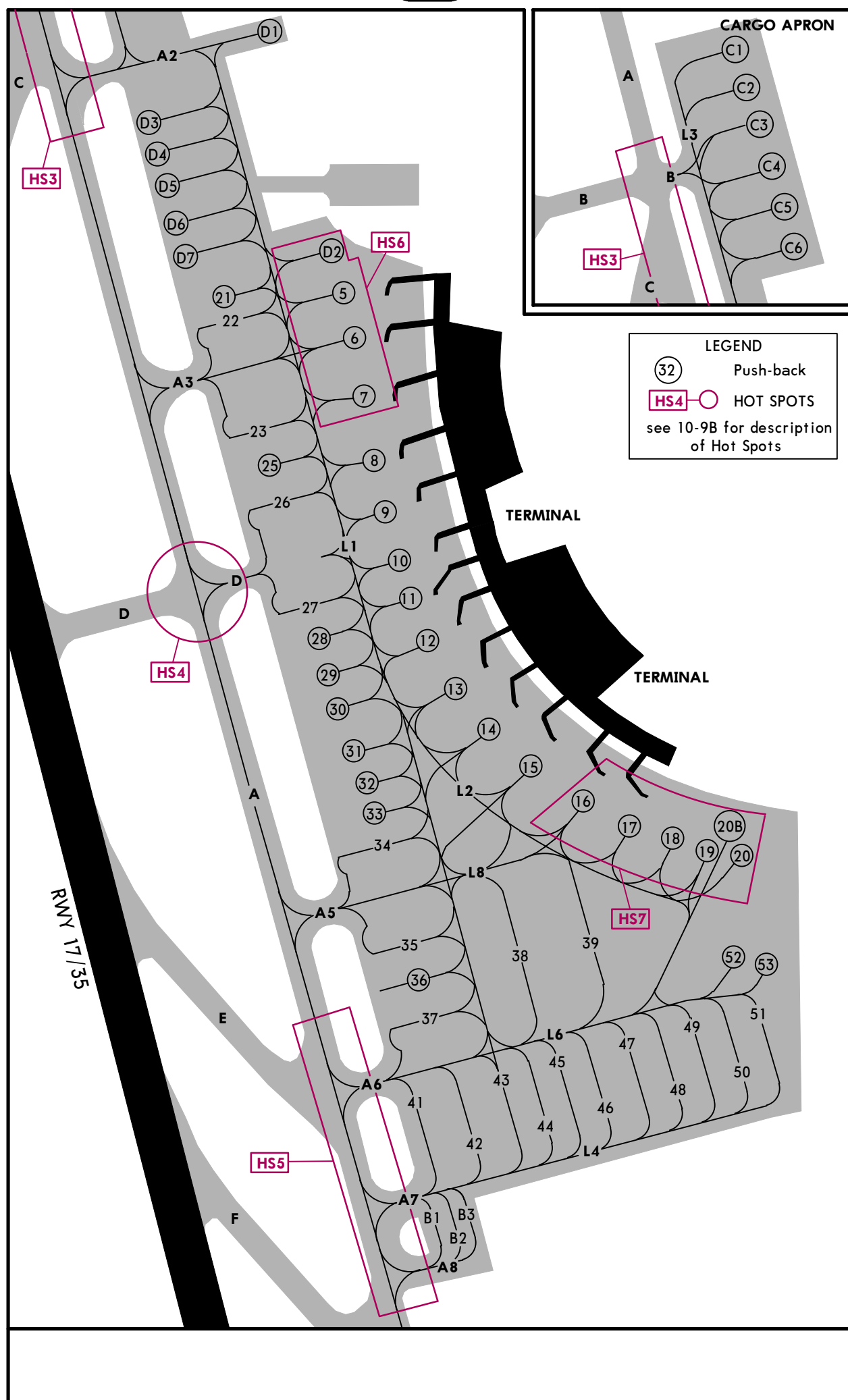
ADDITIONAL RUNWAY INFORMATION					
RWY		USABLE LENGTHS		TAKE-OFF	WIDTH
		Threshold	Landing Beyond Glide Slope		
17 35	HIRL (60m) CL(30m) HIALS SFL PAPI-L (3.0°) RVR		10,135' 3089m		148' 45m
			10,148' 3093m		
Standard					
TAKE-OFF 1					

ZSQD/TAO

JEPPesen  
16 DEC 16 (10-9A)

QINGDAO, PR OF CHINA

LIUTING



ZSQD/TAO



JEPPesen

QINGDAO, PR OF CHINA

4 SEP 15

10-9B

Eff 16 Sep 1600Z

LIUTING

## HOT SPOT PROCEDURES

For information only, not to be construed as ATC instructions.

For the purpose of reducing errors that lead to ground conflicts and runway incursions, aircraft operating within the maneuvering area of Qingdao airport must follow the requirements below:

- HS1** Runway 17/35 ILS Protected Area:  
& Aircraft taxiing from apron will be instructed to hold short of ILS protected area outside rwy holding positions when rwy 17/35 is in use. In that case, aircraft shall not proceed beyond rwy holding positions without ATC clearance.
- HS2**
- HS3** Intersections of Taxiways A2, B, C:  
Aircraft exiting out of apron via Twy A, B and A2 shall pay attention to ATC holding or taxiing instructions before entering this area.
- HS4** Intersections of Taxiways A and D:  
Aircraft taxiing on main Twy A shall pay attention to ATC holding or taxiing instructions before entering this area.
- HS5** Intersections of Taxiways A6, A7, A8 and E:  
Aircraft exiting out of apron via Twy A6 and A7 shall pay attention to ATC holding or taxiing instructions before entering this area.  
Aircraft taxiing into Stands B1 thru B3 on main Twy A shall use Twy A8 only.  
Crew shall pay attention to avoid taxiing into apron from Twy A7 by mistake.  
Aircraft taxiing on main Twy A shall pay attention to ATC holding or taxiing instructions before entering this area.
- HS6** Area of Stands Nr.5 thru 7 and D2:  
Stand 5 and 7 are mainly used for havy Aircraft. Airport service lane is between Stand 5 and 7. Aircraft shall pay attention to ATC holding or taxiing instructions before entering this area and keep observing.
- HS7** Area of Stands Nr.16 thru 20 and 20B:  
Stands 16 thru 20, 20B are located at Control TWR blind area.  
Aircraft shall pay attention to ATC holding or taxiing instructions before entering this area and keep observing.

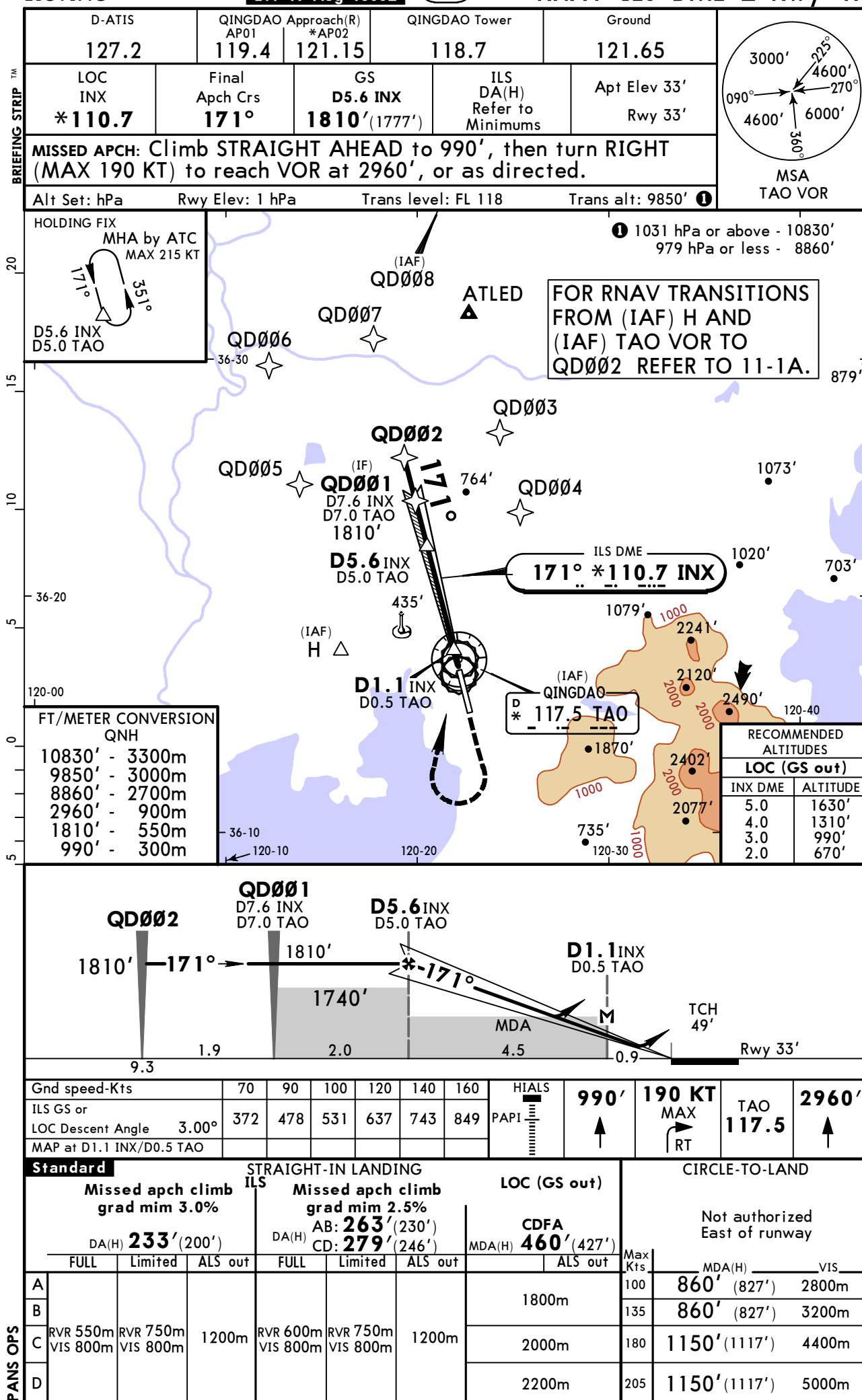


**ZSQD/TAO**  
LIUTING

7 AUG 15  
Eff 19 Aug 1600Z

(11-1)

**QINGDAO, PR OF CHINA**  
RNAV ILS DME Z Rwy 17



ZSQD/TAO

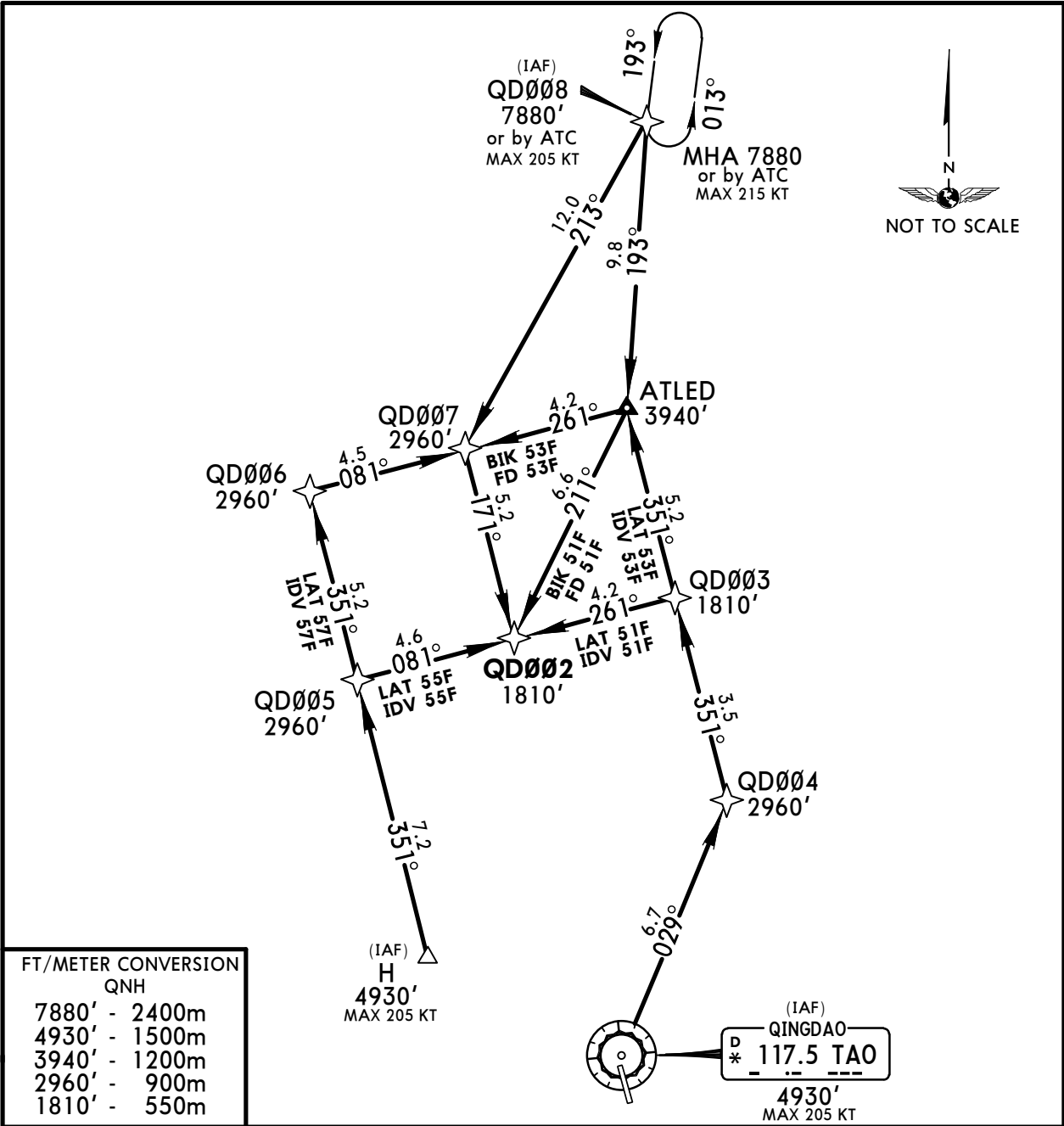
7 AUG 15

Eff 19 Aug 1600Z

11-1A

QINGDAO, PR OF CHINA  
RNAV TRANSITIONS TO  
RNAV ILS DME Z RWY 17

LIUTING



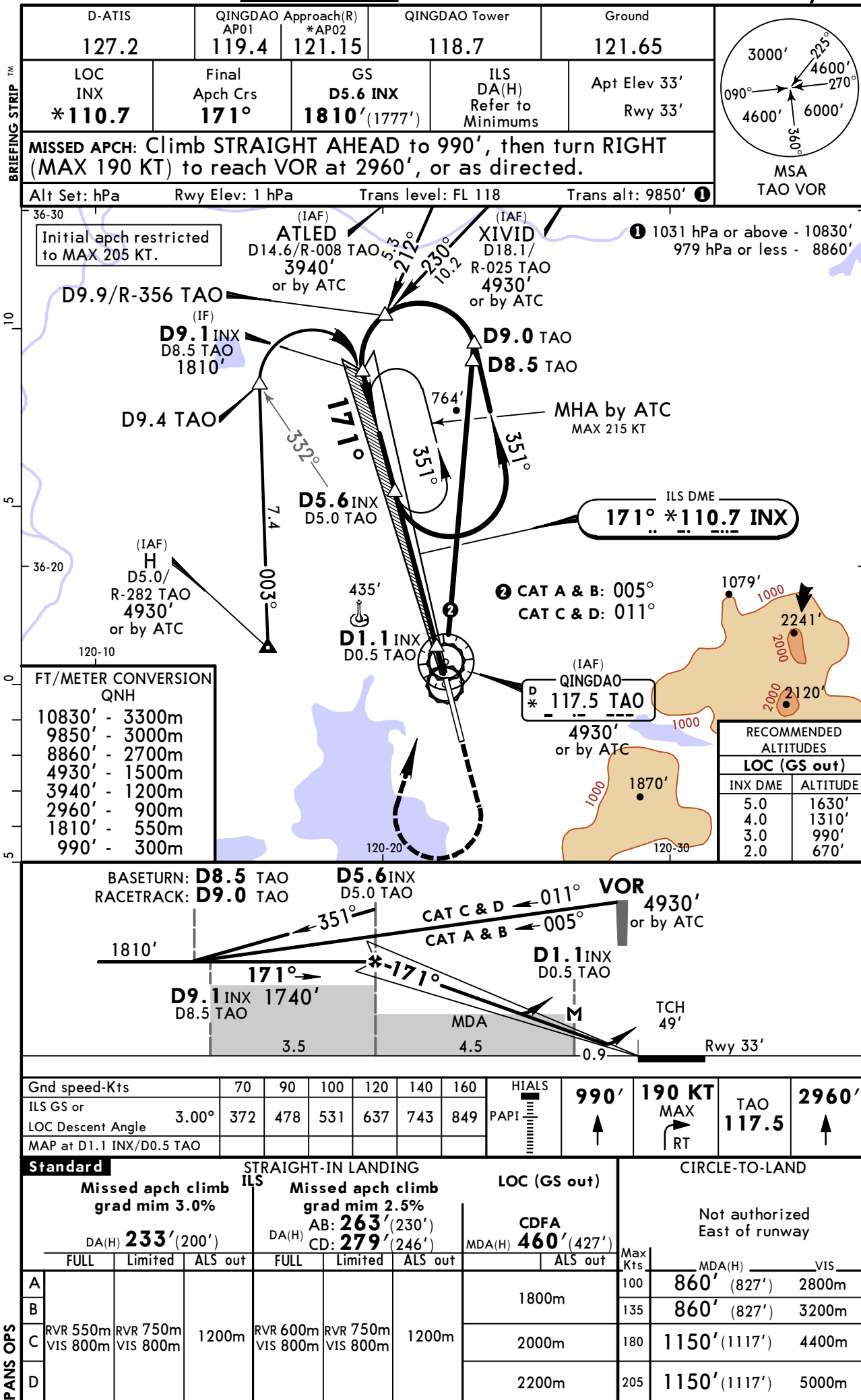
TRANSITION	ROUTING
BIK 51F	QD0008 (7880' or by ATC) - ATLED (3940'+) - QD0002 (1810'+).
BIK 53F (by ATC)	QD0008 (7880' or by ATC) - QD0007 (2960'+) - QD0002 (1810'+).
FD 51F	QD0008 (7880' or by ATC) - ATLED (3940'+) - QD0002 (1810'+).
FD 53F (by ATC)	QD0008 (7880' or by ATC) - QD0007 (2960'+) - QD0002 (1810'+).
IDV 51F	TAO VOR (4930') - QD0004 (2960'+) - QD0003 (1810'+) - QD0002 (1810'+).
IDV 53F (by ATC)	TAO VOR (4930') - QD0004 - ATLED (3940'+) - QD0007 (2960'+) - QD0002 (1810'+).
IDV 55F (by ATC)	H (4930') - QD0005 (2960'+) - QD0002 (1810'+).
IDV 57F (by ATC)	H (4930') - QD0006 (2960'+) - QD0007 (2960'+) - QD0002 (1810'+).
LAT 51F	TAO VOR (4930') - QD0004 (2960'+) - QD0003 (1810'+) - QD0002 (1810'+).
LAT 53F (by ATC)	TAO VOR (4930') - QD0004 - ATLED (3940'+) - QD0007 (2960'+) - QD0002 (1810'+).
LAT 55F (by ATC)	H (4930') - QD0005 (2960'+) - QD0002 (1810'+).
LAT 57F (by ATC)	H (4930') - QD0006 (2960'+) - QD0007 (2960'+) - QD0002 (1810'+).

**ZSQD/TAO**  
**LIUTING**

2 OCT 15  
Eff 14 Oct 1600Z

(11-2)

**QINGDAO, PR OF CHINA**  
**ILS DME Y Rwy 17**

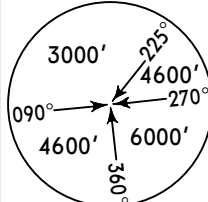


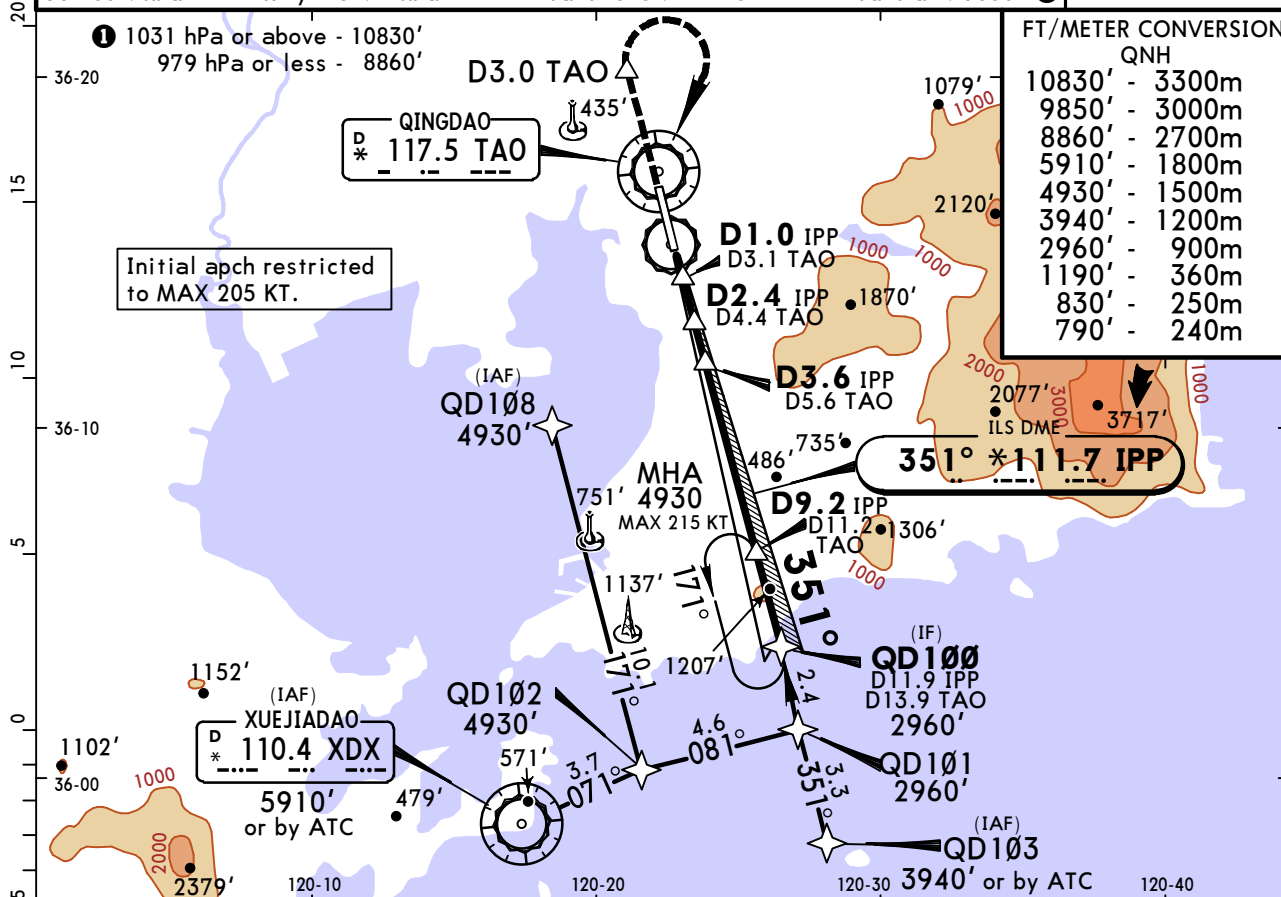
**ZSQD/TAO**  
LIUTING

2 OCT 15  
Eff 14 Oct 1600Z

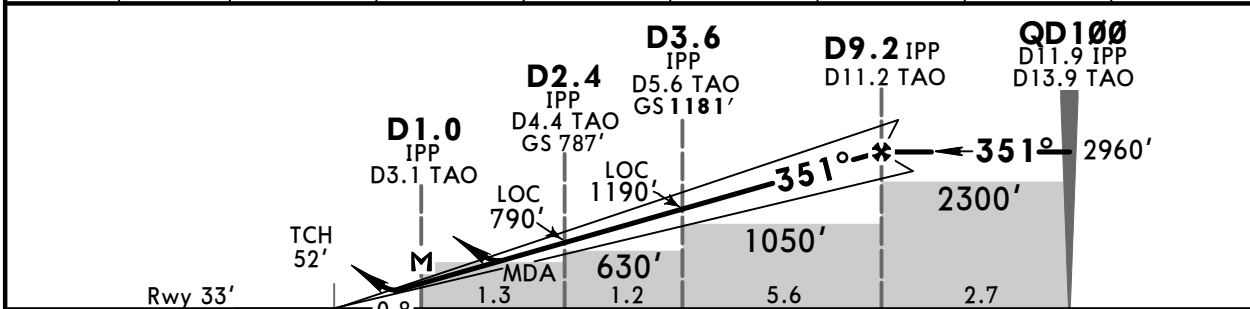
(11-3)

**QINGDAO, PR OF CHINA**  
RNAV ILS DME Z Rwy 35

D-ATIS	QINGDAO Approach(R) AP01 *AP02		QINGDAO Tower		Ground
127.2	119.4	121.15	118.7	121.65	
LOC IPP *111.7	Final Apch Crs 351°	GS D3.6 IPP 1181' (1148')	ILS DA(H) 233' (200')	Apt Elev 33' Rwy 33'	
<b>MISSED APCH:</b> Climb STRAIGHT AHEAD to D3.0 TAO to 830' or above, then turn RIGHT (MAX 190 KT) to reach TAO VOR at 2960' or above, or as directed.					
Alt Set: hPa	Rwy Elev: 1 hPa	Trans level: FL 118	Trans alt: 9850' ①	MSA TAO VOR	



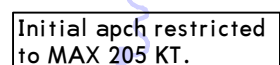
LOC	IPP DME	2.0	3.0	4.0	5.0	6.0	7.0	8.0
(GS out)	ALTITUDE	670'	990'	1310'	1630'	1950'	2270'	2580'



Gnd speed-Kts	70	90	100	120	140	160	HIALS PAPI 830' or above D3.0 TAO
ILS GS or	372	478	531	637	743	849	
LOC Descent Angle	3.00°						
MAP at D1.0 IPP/D3.1 TAO							

PANS OPS	STRAIGHT-IN LANDING			CIRCLE-TO-LAND	
	ILS			Not authorized East of runway	
	DA(H) 233' (200')			Max Kts	
	FULL	Limited	ALS out	MDA(H) VIS	
A				100	860' (827') 2800m
B				135	860' (827') 3200m
C	RVR 550m VIS 800m	RVR 750m VIS 800m	1200m	180	1150' (1117') 4400m
D				205	1150' (1117') 5000m

FT/METER CONVERSION	
QNH	
10830'	- 3300m
9850'	- 3000m
8860'	- 2700m
5910'	- 1800m
4930'	- 1500m
3940'	- 1200m
2960'	- 900m
1190'	- 360m
830'	- 250m
790'	- 240m



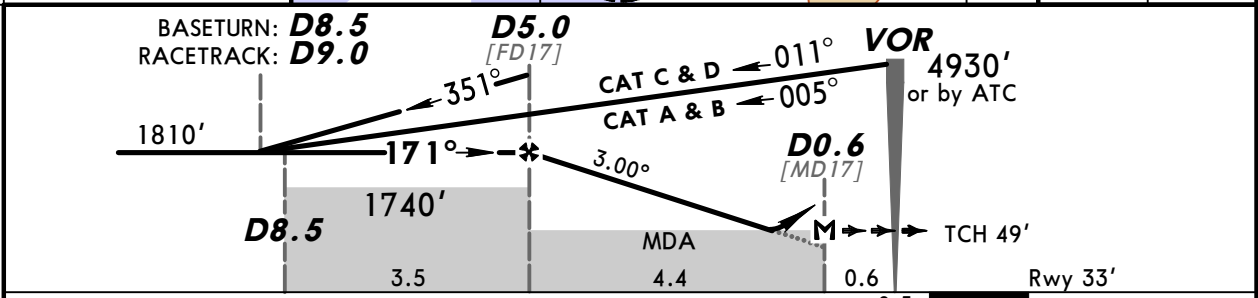
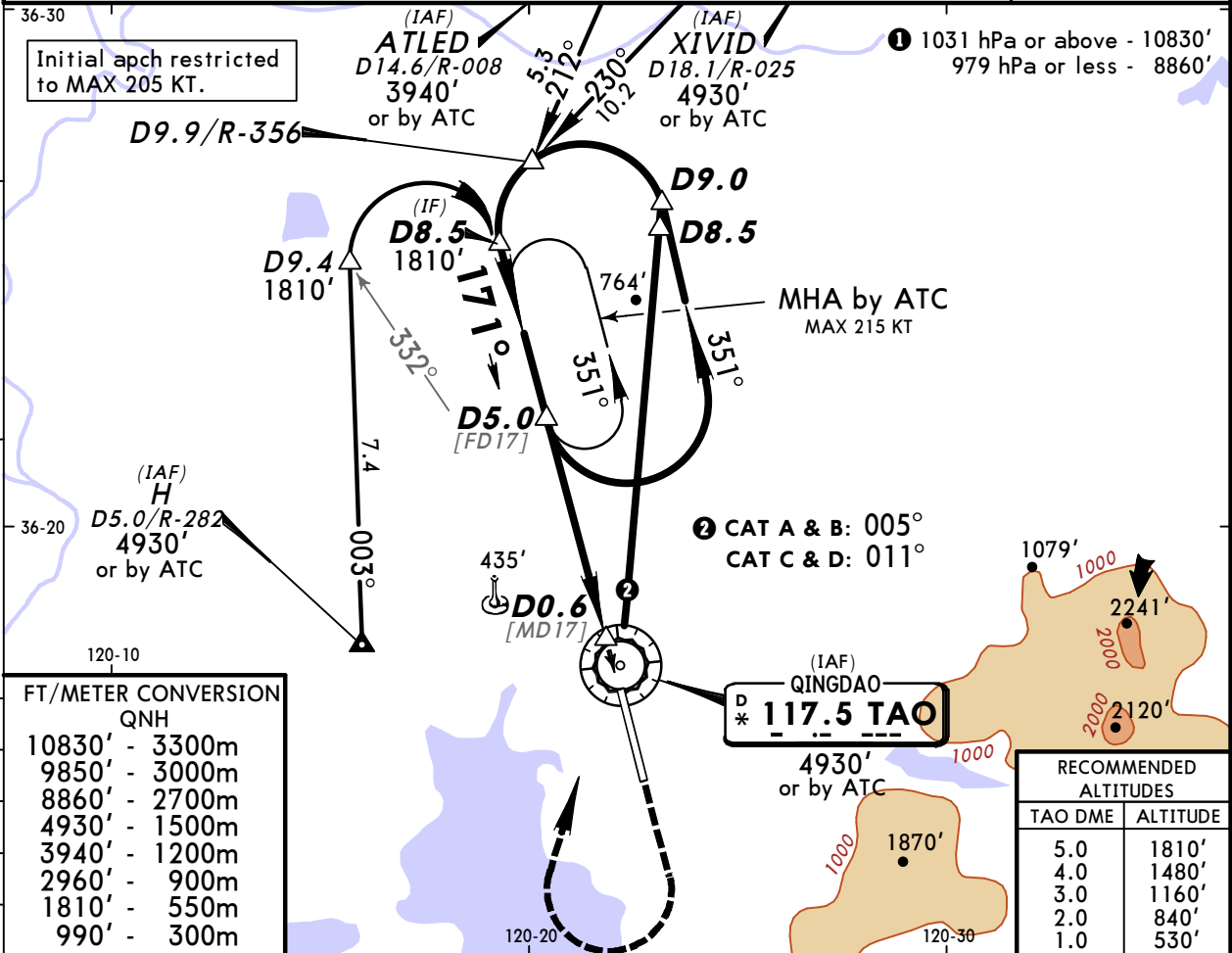
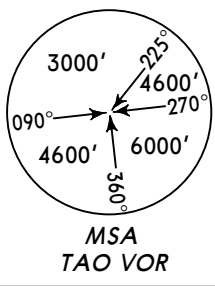
Standard		STRAIGHT-IN LANDING				CIRCLE-TO-LAND	
ILS		LOC (GS out)		CDFA		Not authorized East of runway	
DA(H) <b>233'</b> (200')		MDA(H) <b>460'</b> (427')					
FULL		Limited		ALS out		Max Kts	MDA(H) _____ VIS _____
A	RVR 550m VIS 800m	RVR 750m VIS 800m	1200m	1800m		100	<b>860'</b> (827') 2800m
B						135	<b>860'</b> (827') 3200m
C				2000m		180	<b>1150'</b> (1117') 4400m
D				2200m		205	<b>1150'</b> (1117') 5000m



**ZSQD/TAO**  
**LIUTING**

**JEPPESSEN QINGDAO, PR OF CHINA**  
27 FEB 15 **(13-1)** **Eff 4 Mar 1600Z** **VOR DME Rwy 17**

D-ATIS <b>127.2</b>	QINGDAO Approach(R) AP01 <b>119.4</b>	*AP02 <b>121.15</b>	QINGDAO Tower <b>118.7</b>	Ground <b>121.65</b>
VOR TAO <b>*117.5</b>	Final Apch Crs <b>171°</b>	Procedure Alt <b>D5.0</b> <b>1810'</b> (1777')	MDA(H) <b>500'</b> (467')	Apt Elev 33' Rwy 33'
<b>MISSED APCH: Climb STRAIGHT AHEAD to 990', then turn RIGHT (MAX 190 KT) to reach VOR at 2960', or as directed.</b>				
Alt Set: hPa	Rwy Elev: 1 hPa	Trans level: FL 118	Trans alt: 9850' <b>①</b>	



Gnd speed-Kts	70	90	100	120	140	160		HIALS	990'	190 KT	TAO	2960'
Descent Angle 3.00°	372	478	531	637	743	849		PAPI	↑	MAX	117.5	↑
MAP at D0.6										RT		

Standard				STRAIGHT-IN LANDING				CIRCLE-TO-LAND			
				CDFA				Not authorized East of runway			
				MDA(H) <b>500'</b> (467')							
				ALS out							
A				2000m			Max Kts	MDA(H)		VIS	
B							100	860' (827')		2800m	
C							135	860' (827')		3200m	
D							180	1150' (1117')		4400m	
							205	1150' (1117')		5000m	



Chart changes since cycle 25-2016

ADD = added chart, REV = revised chart, DEL = deleted chart.

ACT	PROCEDURE IDENT	INDEX	REV DATE	EFF DATE
QINGDAO, (LIUTING - ZSQD)				
REV	AIRPORT, AIRPORT INFO, TA...	10-9	16 Dec 2016	
REV	PARKING POSITIONS	10-9A	16 Dec 2016	



## TERMINAL CHART CHANGE NOTICES

### No Chart Change Notices for Airport ZSQD

### Chart Change Notices for Country CHN

**Type:** Gen Tmnl

**Effectivity:** Permanent

**Begin Date:** 20150429

**End Date:** No end date

At the following airports disregard the note "QNH on req" as QFE is avbl only: ZGNN, ZSWX, ZYJM, ZYMD, ZYQQ and ZYYJ.