

List of pages in this Trip Kit

Trip Kit Index

Airport Information For ZBTJ

Terminal Charts For ZBTJ

Revision Letter For Cycle 19-2016

Change Notices

Notebook

General Information

Location: TIANJIN CHN
ICAO/IATA: ZBTJ / TSN
Lat/Long: N39°07.4', E117°20.7'
Elevation: 13 ft

Airport Use: Public
Daylight Savings: Not Observed
UTC Conversion: -8:00 = UTC
Magnetic Variation: 6.0°W

Fuel Types: Jet A-1
Repair Types: Minor Airframe, Minor Engine
Customs: Yes
Airport Type: IFR
Landing Fee: Yes
Control Tower: Yes
Jet Start Unit: No
LLWS Alert: No
Beacon: No

Sunrise: 2252 Z
Sunset: 0858 Z

Runway Information

Runway: 16L
Length x Width: 10499 ft x 148 ft
Surface Type: concrete
TDZ-Elev: 12 ft
Lighting: Edge, ALS, Centerline, TDZ

Runway: 16R
Length x Width: 11811 ft x 164 ft
Surface Type: asphalt
TDZ-Elev: 8 ft
Lighting: Edge, ALS, Centerline
Displaced Threshold: 1312 ft
Stopway: 197 ft

Runway: 34L
Length x Width: 11811 ft x 164 ft

Surface Type: asphalt
TDZ-Elev: 8 ft
Lighting: Edge, ALS, Centerline
Stopway: 197 ft

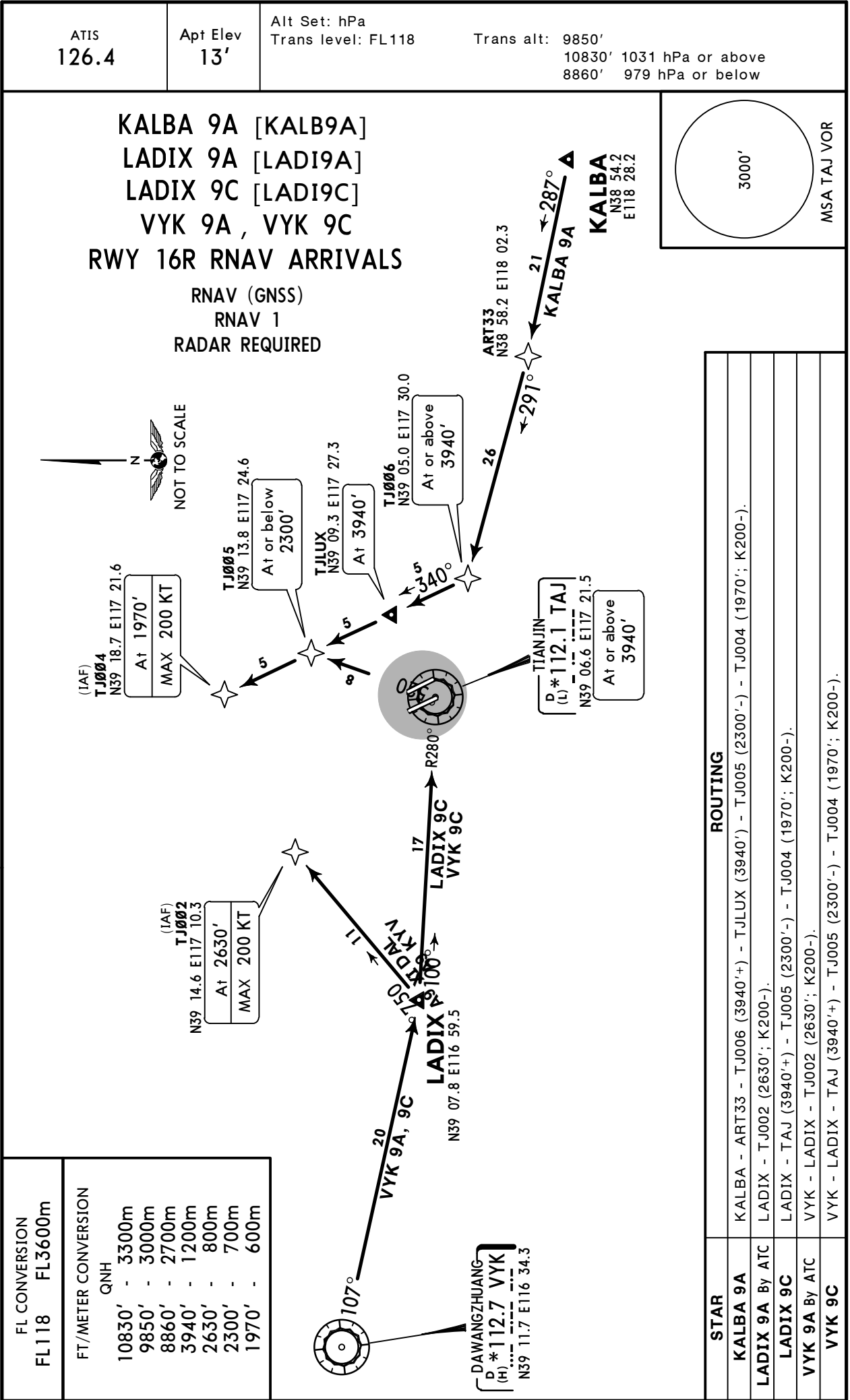
Runway: 34R
Length x Width: 10499 ft x 148 ft
Surface Type: concrete
TDZ-Elev: 12 ft
Lighting: Edge, ALS, Centerline, TDZ

Communication Information

ATIS: 126.400
Tianjin Tower: 130.000 Secondary
Tianjin Tower: 118.875
Tianjin Tower: 118.425 Secondary
Tianjin Tower: 118.200
Tianjin Ground: 121.950
Tianjin Ground: 121.650 Secondary
Tianjin Clearance Delivery: 121.800
Tianjin Approach: 127.900
Tianjin Approach: 120.900 Secondary
Tianjin Approach: 125.250

ZBTJ/TSN
BINHAI

JEPPESSEN TIANJIN, PR OF CHINA
19 JUN 15 10-2 Eff 24 Jun 1600Z RNAV STAR



[illegible]

ZBTJ/TSN
BINHAI

19 JUN 15

10-2B

Eff 24 Jun 1600Z

STAR

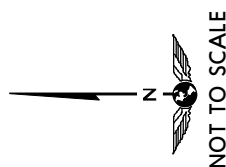
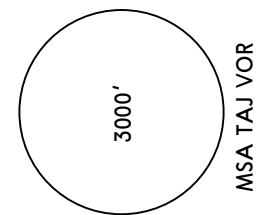
ATIS
126.4

Apt Elev
13'

Alt Set: hPa
Trans level: FL118

Trans alt: 9850'
10830' 1031 hPa or above
8860' 979 hPa or below

KALBA 01A [KALØ1A]
KALBA 03A [KALØ3A]
LADIX 01A [LADØ1A]
VYK 01A
RWYS 16L/R ARRIVALS
KALBA 02A [KALØ2A]
KALBA 04A [KALØ4A]
LADIX 02A [LADØ2A]
VYK 02A
RWYS 34L/R ARRIVALS



(IAF) DONGLIHU
D*113.4 TJK
(H) N39 09.4 E117 31.2
At or above 1970'

(IAF) TIANJIN
D*112.1 TAJ
(L) N39 06.6 E117 21.5
At or above 2960'

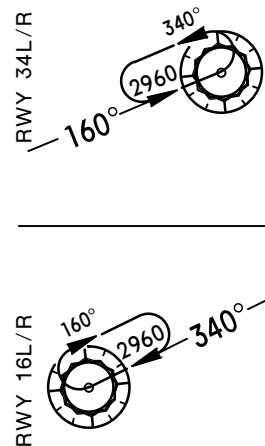
DAWANGHUANG
D*112.7 VYK
(H) N39 11.7 E116 34.3
At or above 8860'

(IAF) D14.0 TAJ
N39 03.4 E117 39.0
At or above 3940'

KALBA 03A
D6.0 TJK
N39 04.2 E117 35.0
At or above 3940'

KALBA 03A
At or above 3940'

HOLDINGS OVER TAJ

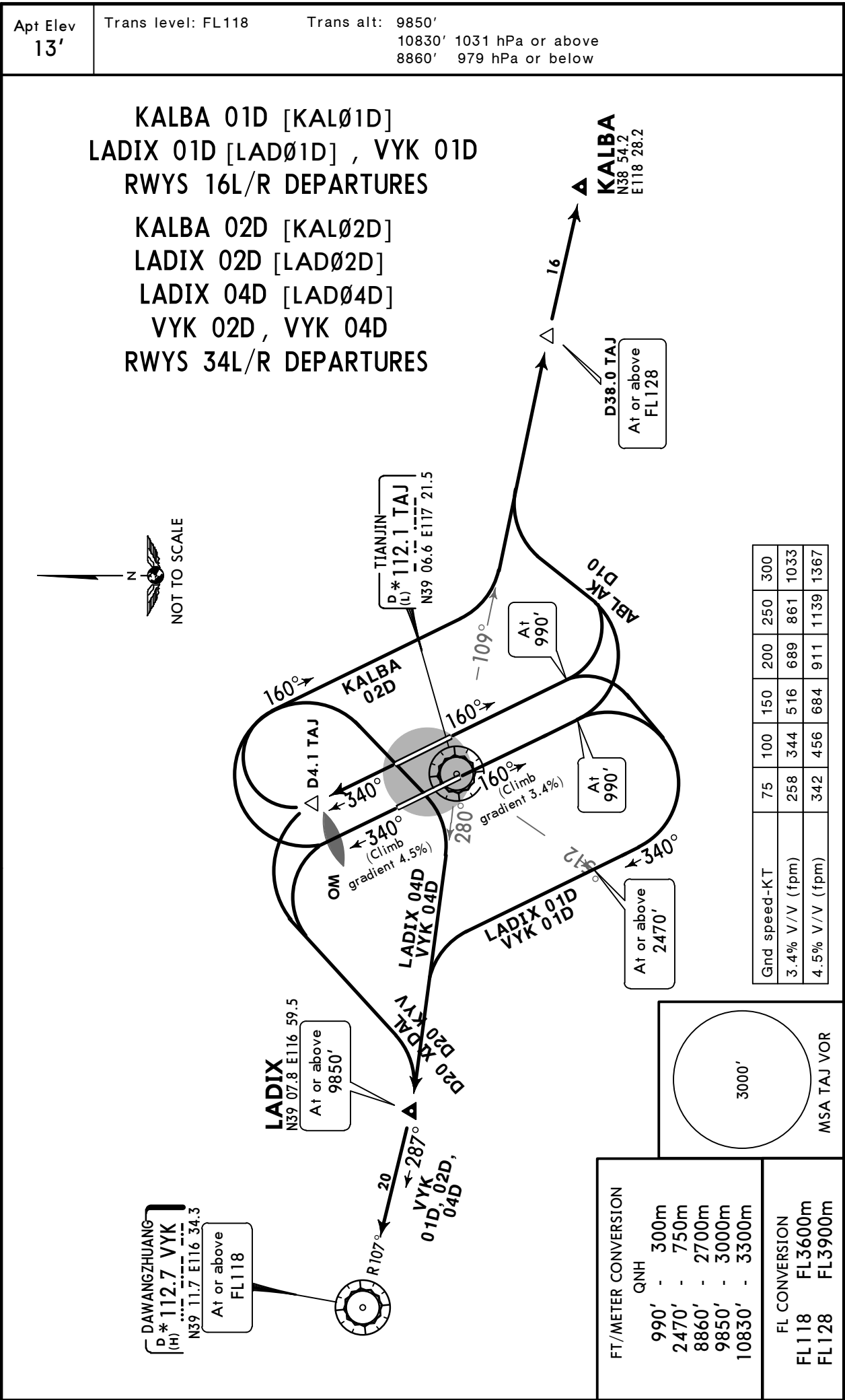


FL CONVERSION
FL118 FL3600m

FT/METER CONVERSION
QNH
10830' - 3300m
9850' - 3000m
8860' - 2700m
3940' - 1200m
2960' - 900m
1970' - 600m

ZBTJ/TSN
BINHAI

JEPPESSEN TIANJIN, PR OF CHINA
19 JUN 15 10-3 Eff 24 Jun 1600Z SID



ZBTJ/TSN
BINHAI

JEPPESSEN **TIANJIN, PR OF CHINA**
19 JUN 15 **10-3A** **Eff 24 Jun 1600Z** **SID**

Apt Elev
13'

Trans level: FL118

Trans alt: 9850'
10830' 1031 hPa or above
8860' 979 hPa or below

3000'

MSA TAJ VOR

IKENU 01D [IKEØ1D]

PANKI 01D [PANØ1D]

YQG 01D

BY ATC

RWYS 16L/R DEPARTURES

IKENU 02D [IKEØ2D]

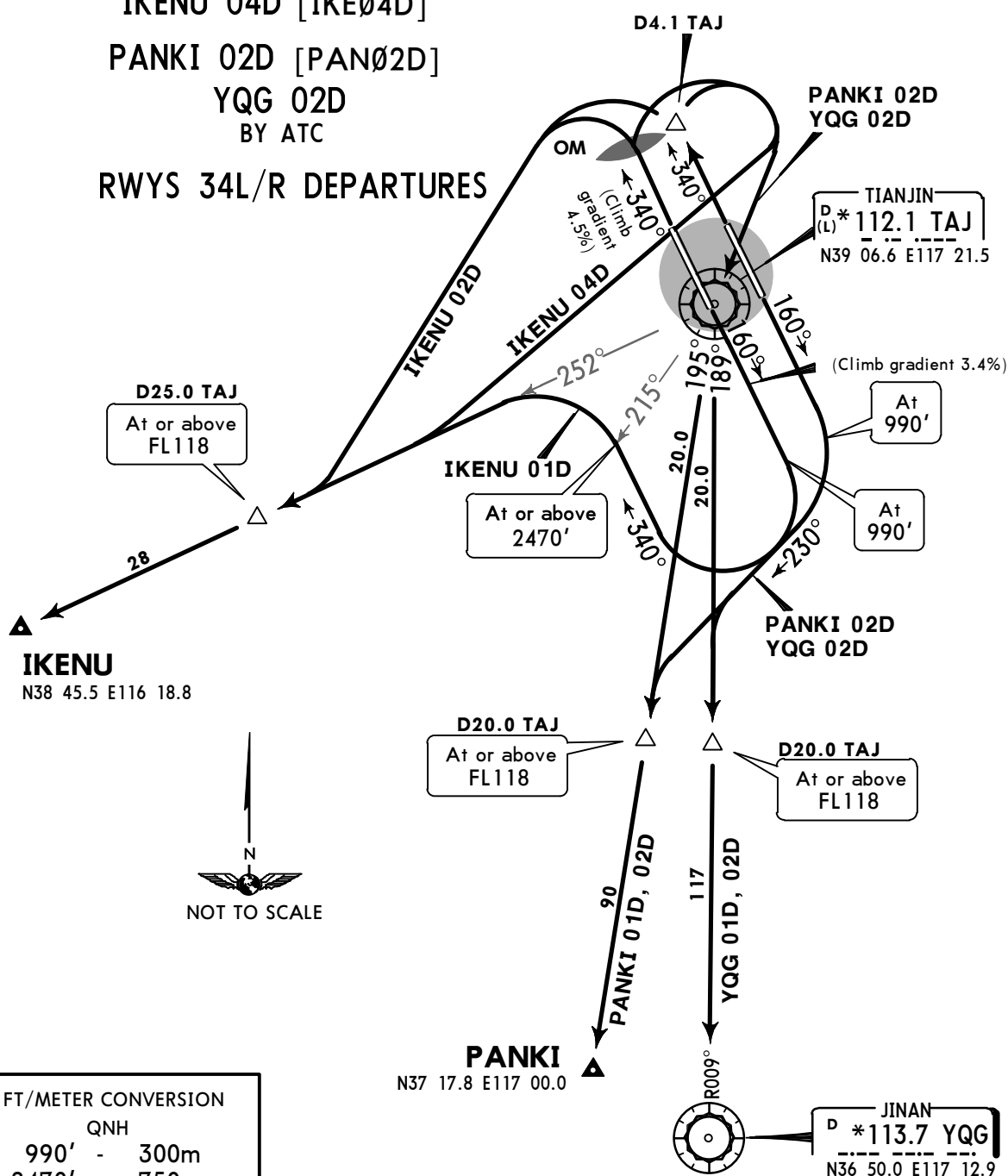
IKENU 04D [IKEØ4D]

PANKI 02D [PANØ2D]

YQG 02D

BY ATC

RWYS 34L/R DEPARTURES



FT/METER CONVERSION

QNH

990' - 300m
2470' - 750m
8860' - 2700m
9850' - 3000m
10830' - 3300m

FL CONVERSION

FL118 FL3600m

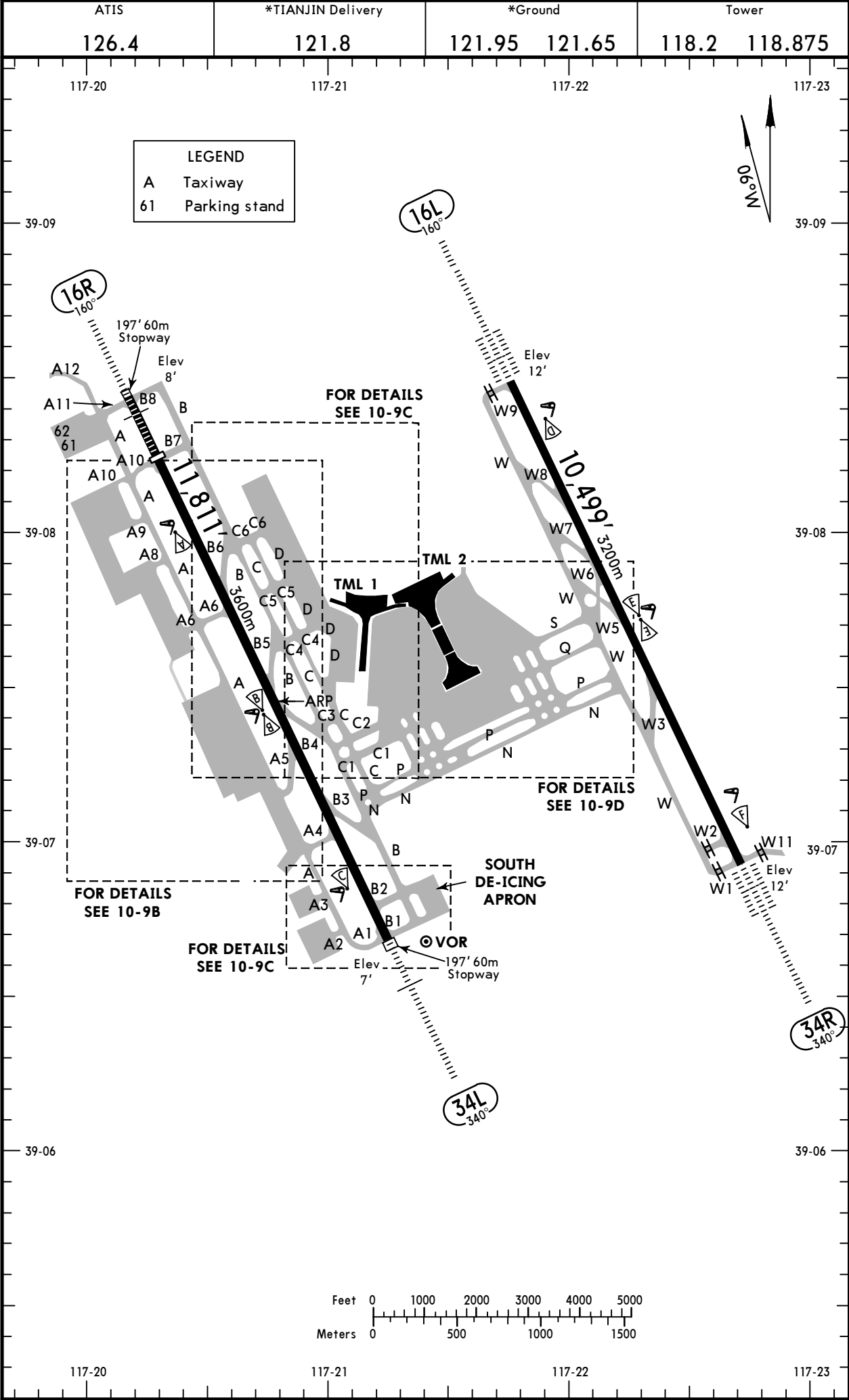
| Gnd speed-KT | 75 | 100 | 150 | 200 | 250 | 300 |
|----------------|-----|-----|-----|-----|------|------|
| 3.4% V/V (fpm) | 258 | 344 | 516 | 689 | 861 | 1033 |
| 4.5% V/V (fpm) | 342 | 456 | 684 | 911 | 1139 | 1367 |

ZBTJ/TSN

Apt Elev 13'
N39 07.4 E117 20.7

JEPPESSEN
20 NOV 15 (10-9)

TIANJIN, PR OF CHINA
BINHAI



ZBTJ/TSN



TIANJIN, PR OF CHINA
BINHAI

GENERAL

Birds in vicinity of airport.

180° turns on taxiways are forbidden.

It is strictly forbidden for acft get into hangar under own power.

De-icing stand by GND; contact 128.85 for de-icing service, TWR when finished.

Rwy 34L/R right-hand circuit.

ADDITIONAL RUNWAY INFORMATION

| RWY | | USABLE LENGTHS | | TAKE-OFF | WIDTH |
|-----|---|----------------|---------------|----------|-------|
| | | LANDING | BEYOND | | |
| | | Threshold | Glide Slope | | |
| 16L | HIRL (60m) CL (15m) ALSF-II TDZ PAPI-L (3.0°) ❶ RVR | | 9466' 2885m | | 148' |
| 34R | HIRL (60m) CL (15m) ALSF-II TDZ PAPI-L (3.0°) ❷ RVR | | 9468' 2886m | ❸ | 45m |
| 16R | HIRL (60m) CL (30m) HIALS PAPI-L (3.0°) RVR | 10,499' 3200m | 9410' 2868m | ❸ | 164' |
| 34L | HIRL (60m) CL (30m) HIALS SFL PAPI-L (3.0°) RVR | | 10,728' 3270m | | 50m |
| | | | | | |
| | | | | | |
| | | | | | |

❶ HST-W3 & W5

❷ HST-W6, W7 & W8

❸ TAKE-OFF RUN AVAILABLE

RWY 16R:

From runway head 11,811'(3600m)

twy A10/B7 int 10,499'(3200m) after ATC clearance

RWY 34L:

From runway head 11,811'(3600m)

twy B2 int 11,155'(3400m) after ATC clearance

RWY 34R:

From runway head 10,499'(3200m)

twy W2 int 9967'(3038m)

Standard

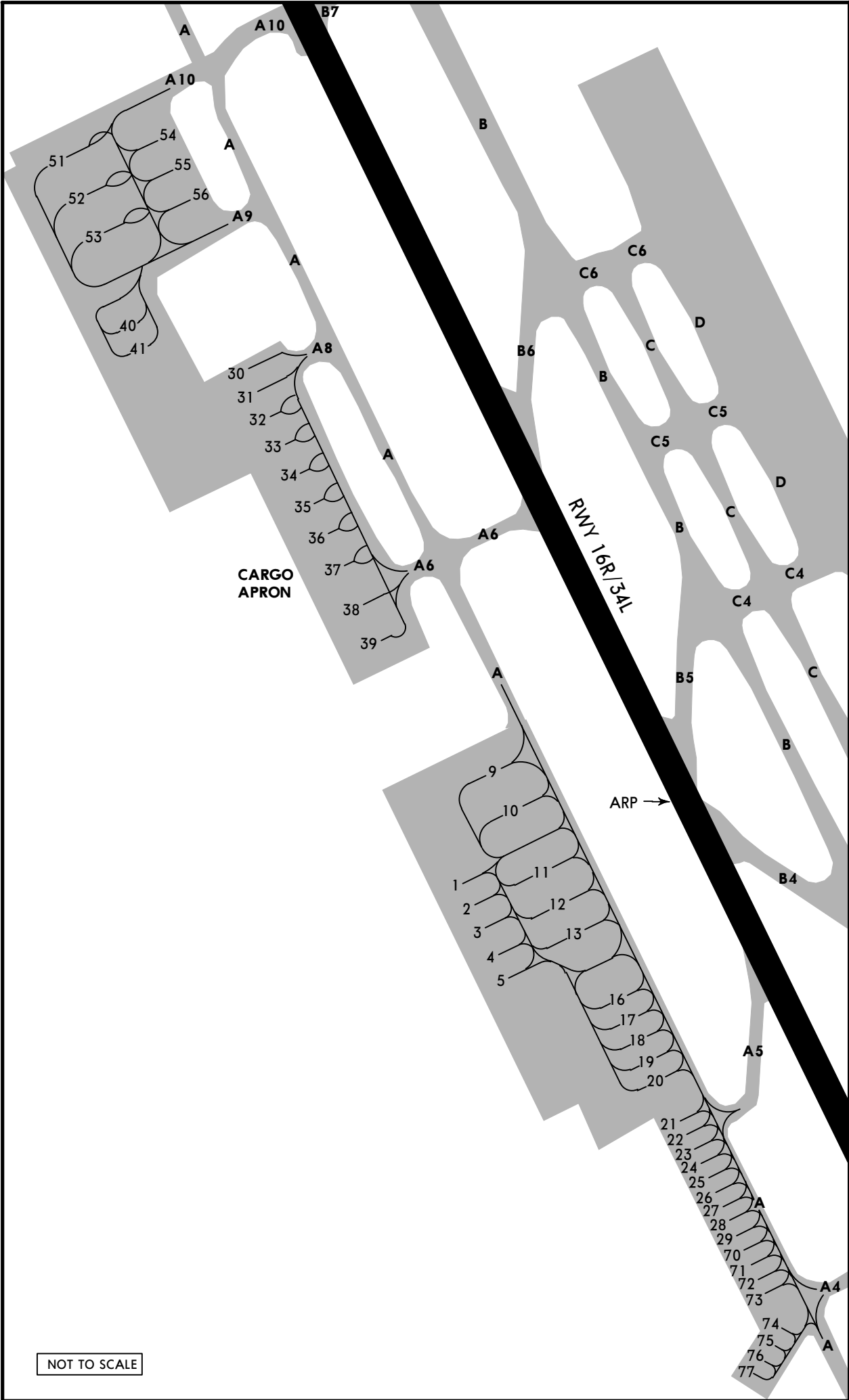
TAKE-OFF

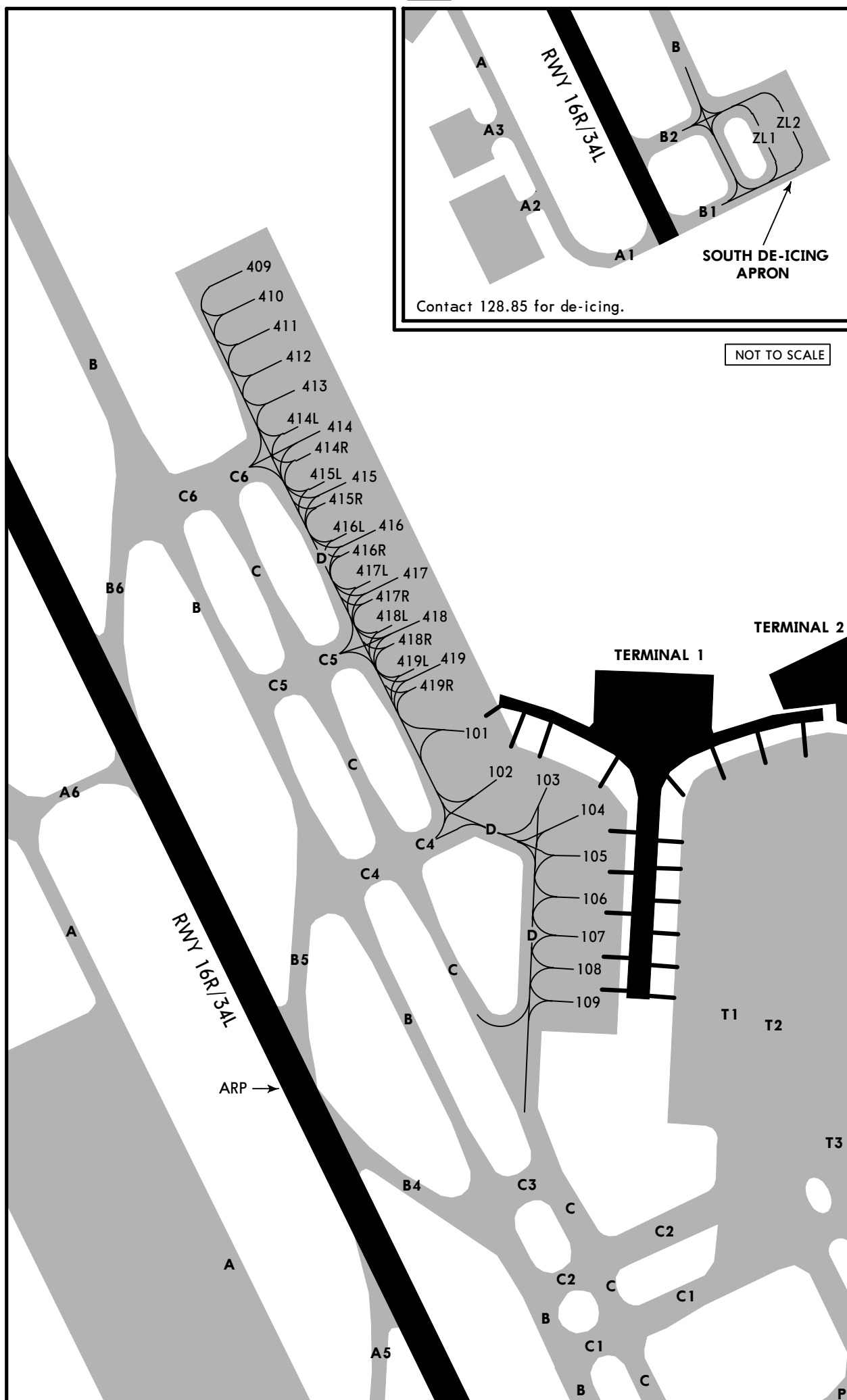
| | | |
|----------------------------|-----------|----------------|
| | RL | NIL (DAY only) |
| 2 TURB Eng or 3 & 4 Eng | RVR 500m | |
| Other | VIS 1600m | |

ZBTJ/TSN

 **JEPPesen**
1 MAY 15 (10-9B)

TIANJIN, PR OF CHINA
BINHAI





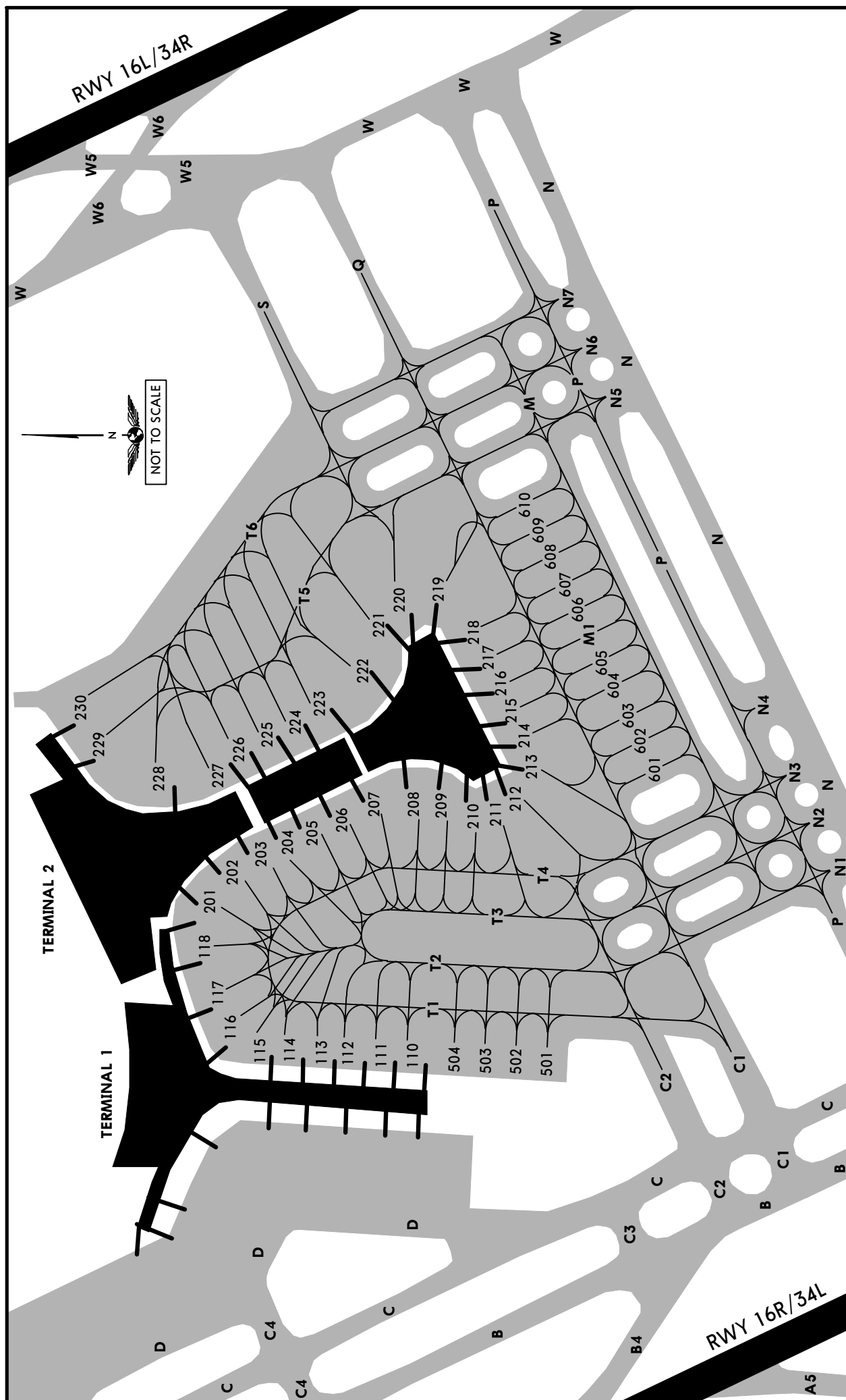
ZBTJ/TSN

JEPPesen
8 AUG 14 (10-9D)

TIANJIN, PR OF CHINA

BINHAI

Eff 20 Aug 1600Z



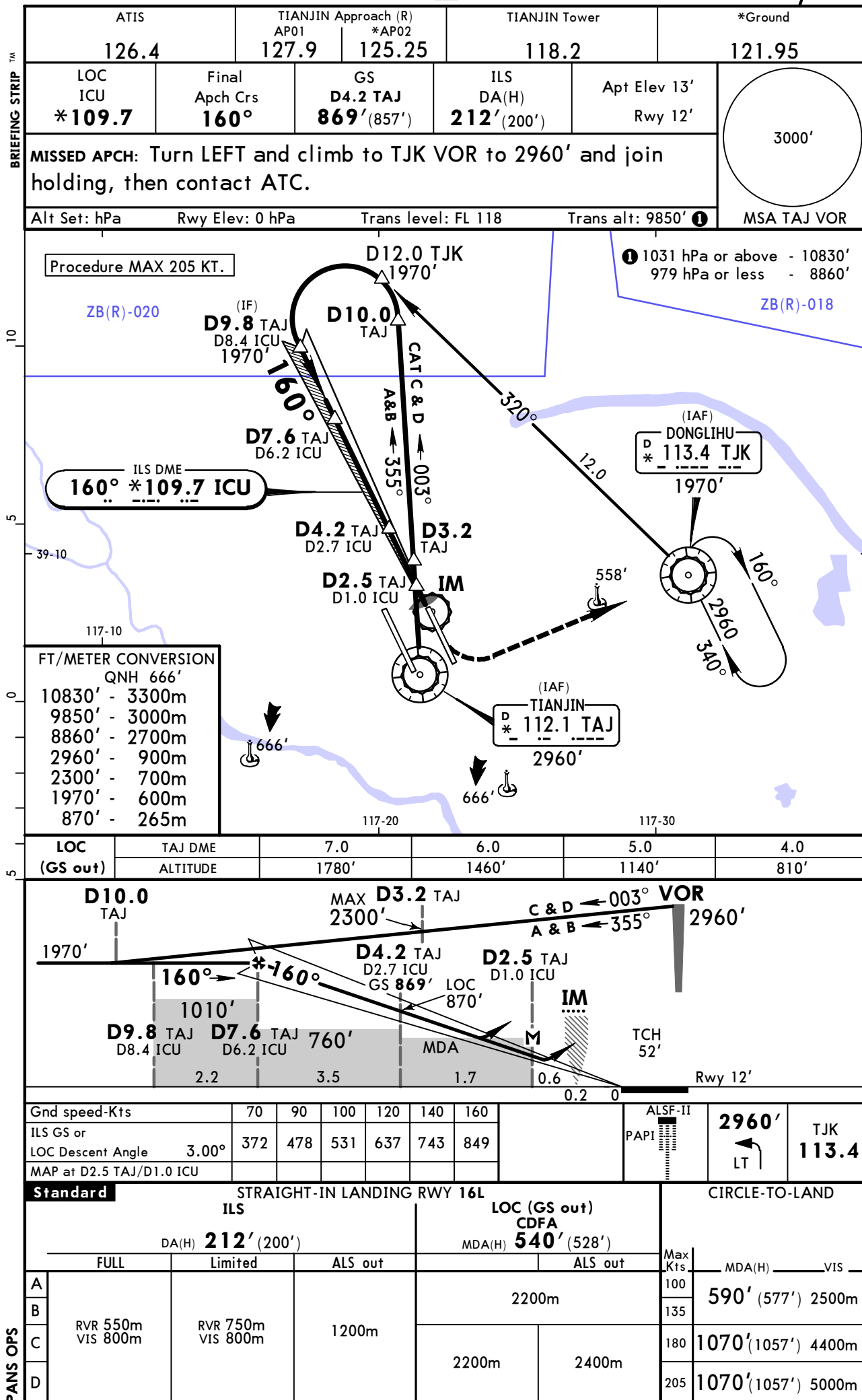
CHANGES: New chart.

© JEPPESEN, 2014. ALL RIGHTS RESERVED.

ZBTJ/TSN
BINHAI

JEPPESSEN
26 JUN 15 **(11-1)**

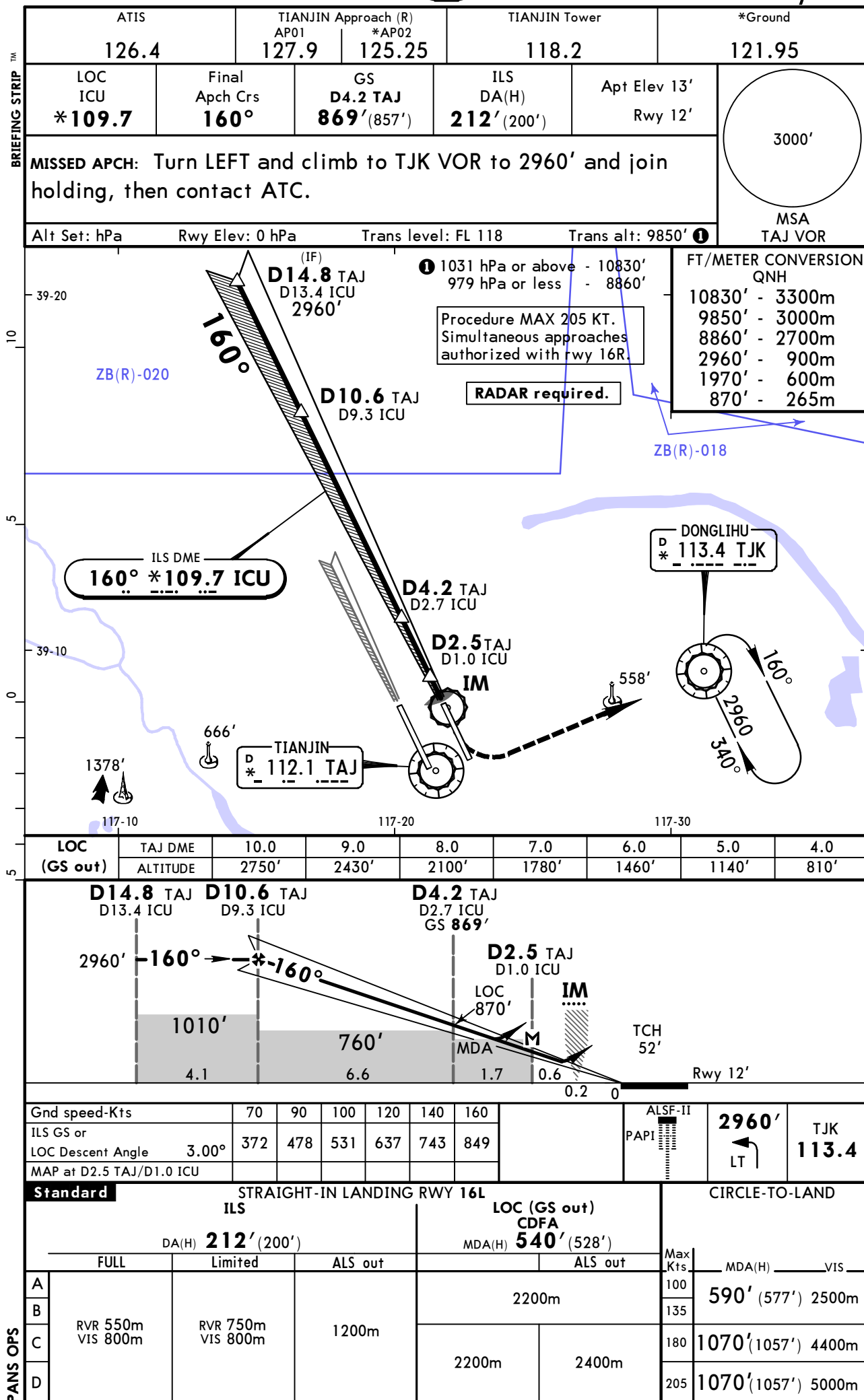
TIANJIN, PR OF CHINA
ILS DME Z Rwy 16L



ZBTJ/TSN
BINHAI

JEPPESSEN
26 JUN 15 (11-2)

TIANJIN, PR OF CHINA
ILS DME Y Rwy 16L



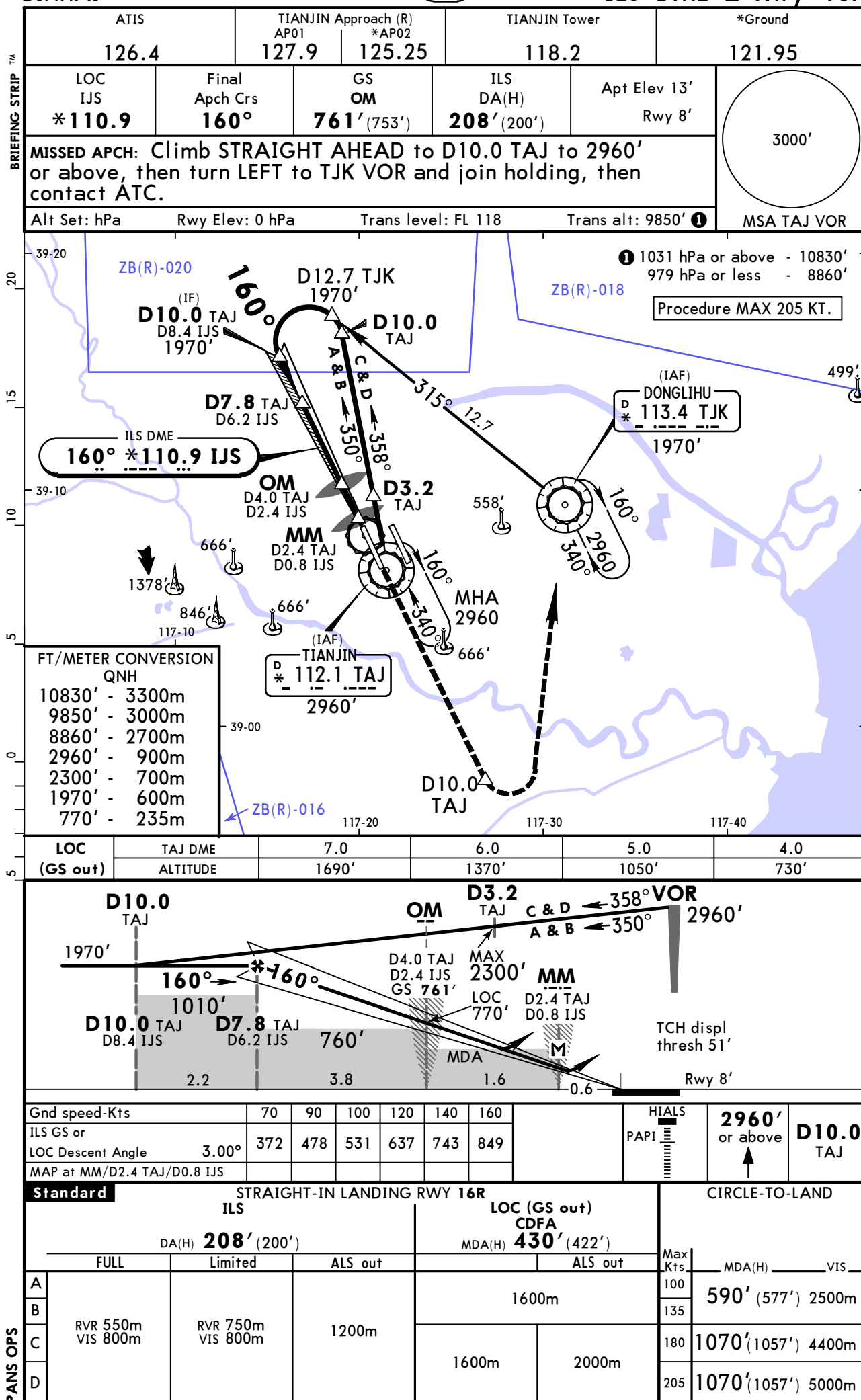
ZBTJ/TSN
BINHAI

26 JUN 15

(11-3)

JEPPESSEN

TIANJIN, PR OF CHINA
ILS DME Z Rwy 16R



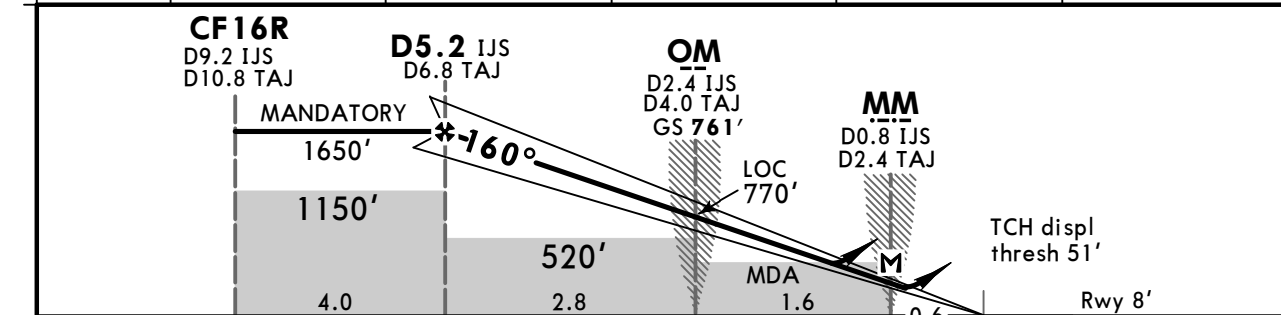
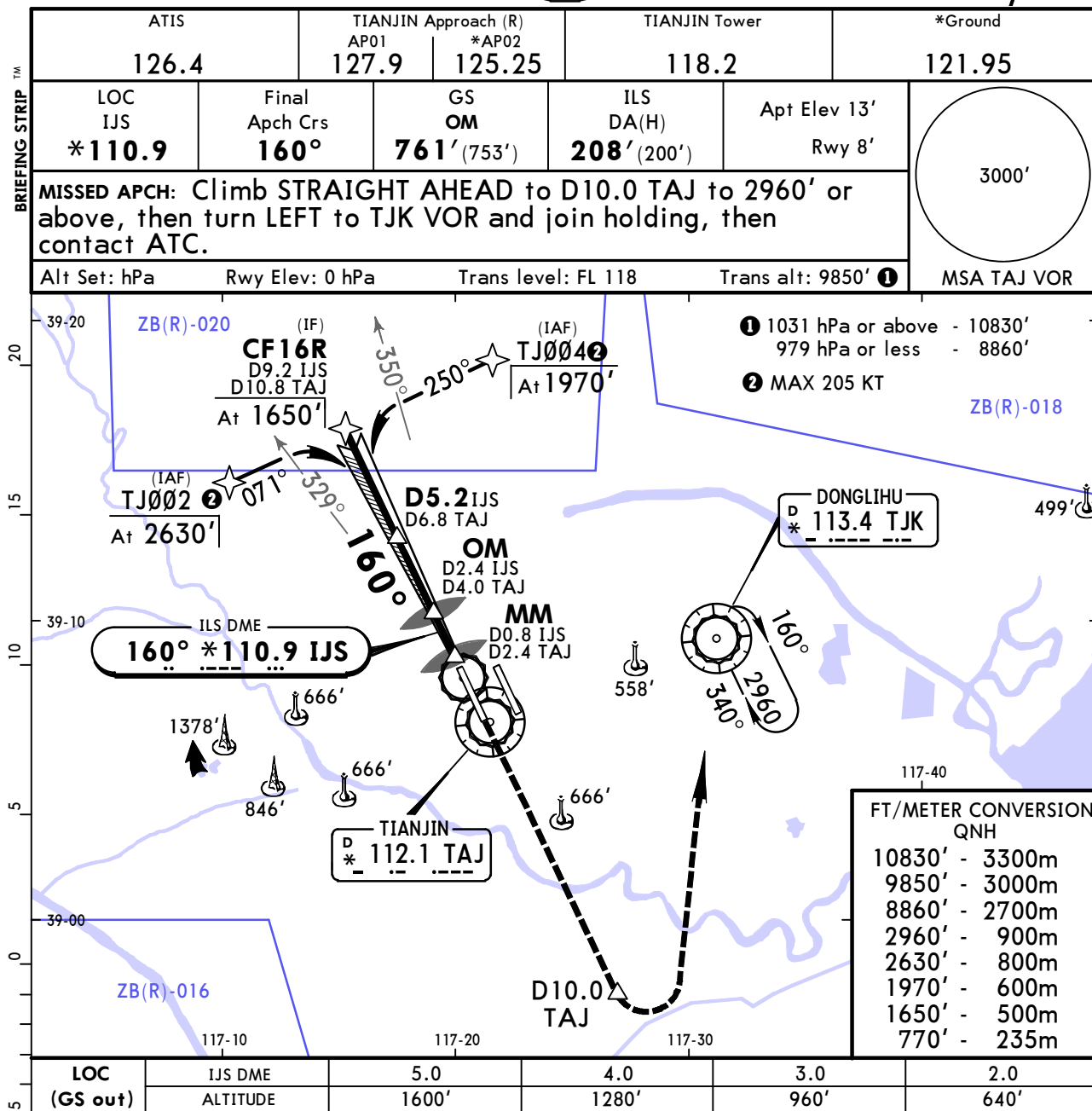
CHANGES: Procedure. MSA.

© JEPPESSEN, 2009, 2015. ALL RIGHTS RESERVED.

ZBTJ/TSN
BINHAI

JEPPESSEN
26 JUN 15 **(11-4)**

TIANJIN, PR OF CHINA
RNAV ILS DME Y Rwy 16R



| | | | | | | | | | | |
|--------------------------------|-------|-----|-----|-----|-----|-----|-----|-------|--------------|--------------|
| Gnd speed-Kts | 70 | 90 | 100 | 120 | 140 | 160 | | HIALS | 2960' | D10.0 |
| ILS GS or LOC Descent Angle | 3.00° | 372 | 478 | 531 | 637 | 743 | 849 | PAPI | ↑ | TAJ |
| MAP at MM/D0.8 IJS/D2.4 TAJ | | | | | | | | | | |

| Standard | | | STRAIGHT-IN LANDING RWY 16R | | | CIRCLE-TO-LAND | | |
|-------------------|----------------------|----------------------|-----------------------------|-------|--|----------------|------------------------|--|
| ILS | | | LOC (GS out) CDFA | | | | | |
| DA(H) 208' (200') | | | MDA(H) 430' (422') | | | | | |
| FULL | | Limited | ALS out | | | Max Kts | MDA(H) _____ VIS _____ | |
| A | RVR 550m VIS 800m | RVR 750m VIS 800m | 1200m | 1600m | | 100 | 590' (577') 2500m | |
| B | | | | | | 135 | | |
| C | | | | | | 180 | 1070' (1057') 4400m | |
| D | | | | | | 205 | 1070' (1057') 5000m | |

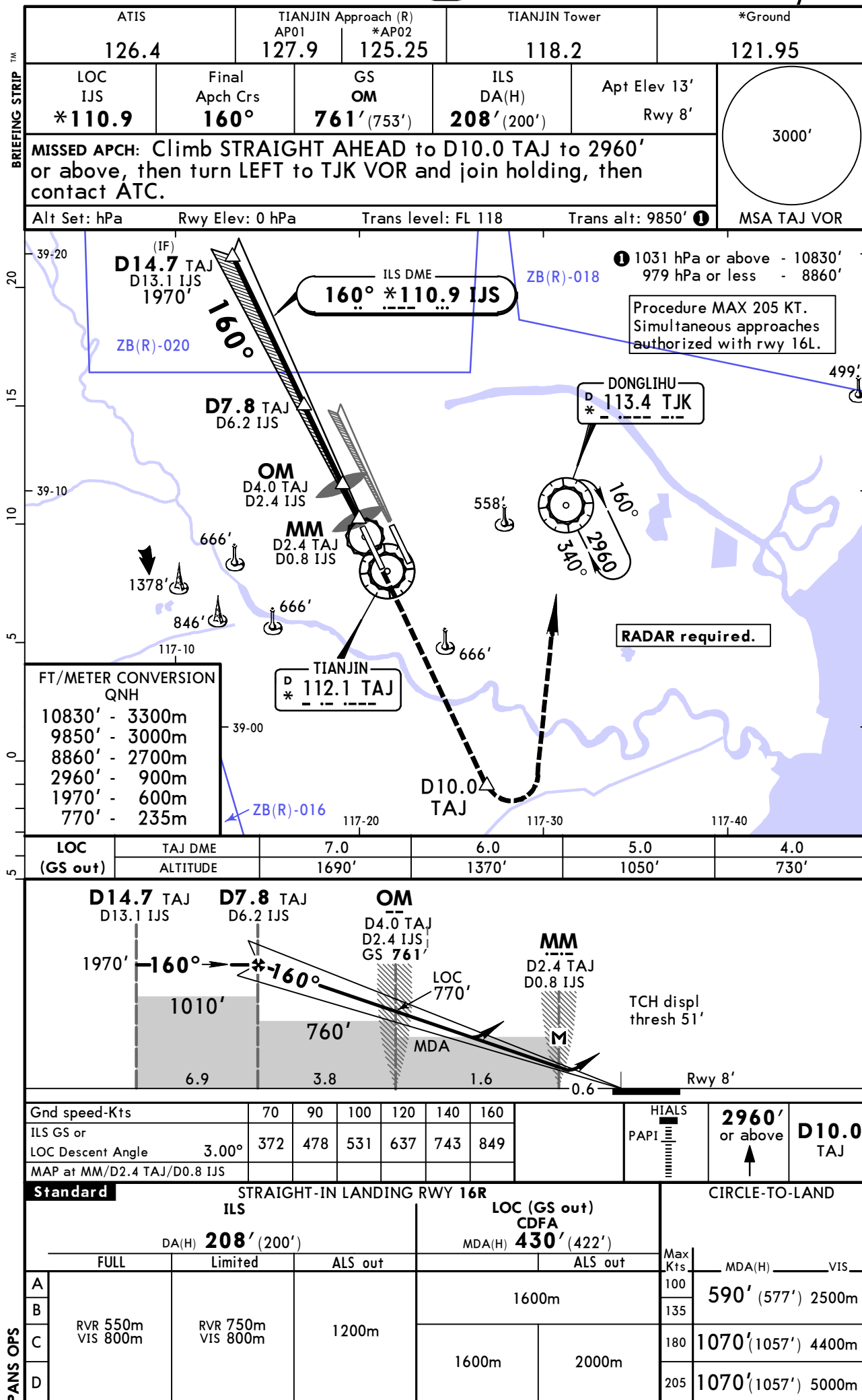
CHANGES: Procedure. MSA.

© JEPPESSEN, 2004, 2015. ALL RIGHTS RESERVED.


ZBTJ/TSN
BINHAI

JEPPESSEN
26 JUN 15 **(11-5)**

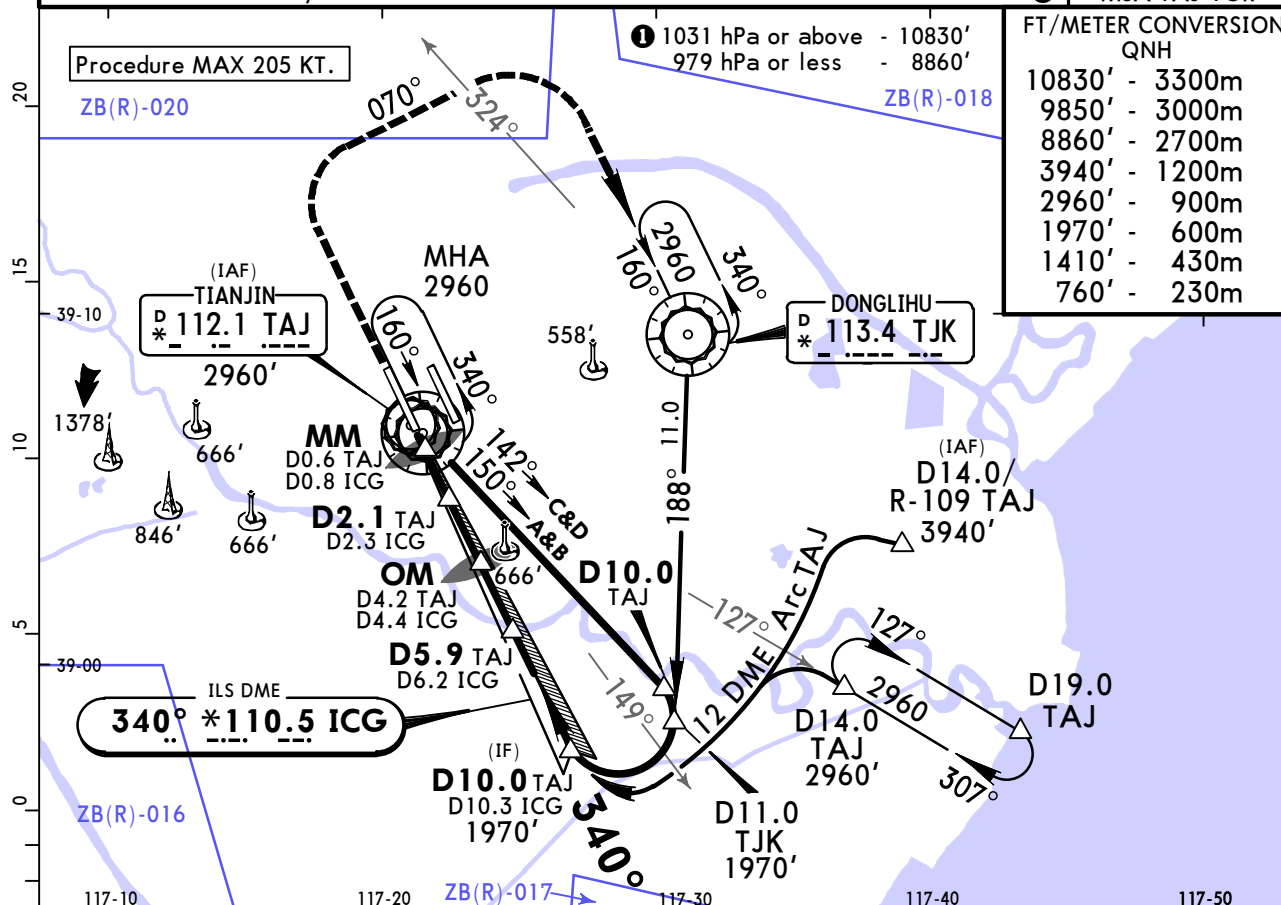
TIANJIN, PR OF CHINA
ILS DME X Rwy 16R



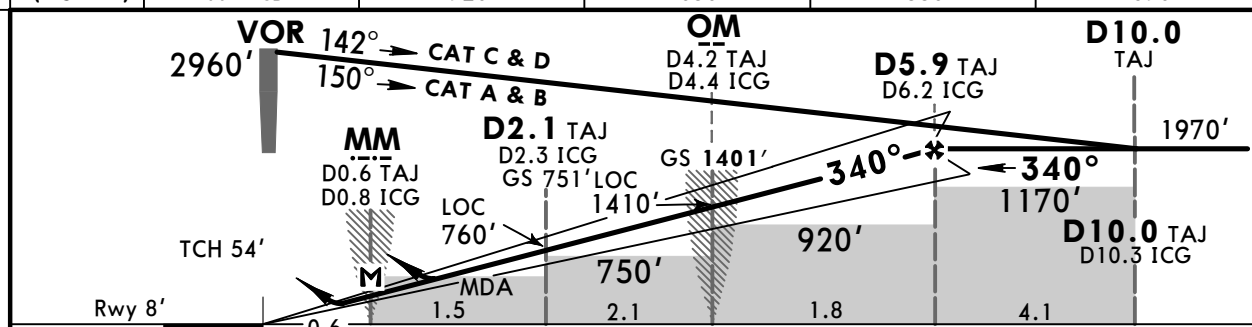
TIANJIN, PR OF CHINA
ILS DME Z Rwy 34L

| | | | | | | | |
|---|----------------------------------|---|------------------------------------|-------------------------------|--|---|-------------|
| ATIS 126.4 | | TIANJIN Approach (R) AP01 127.9 *AP02 125.25 | | TIANJIN Tower 118.2 | | *Ground 121.95 | |
| LOC ICG *110.5 | Final Apch Crs 340° | GS OM 1401' (1393') | ILS DA(H) 208' (200') | Apt Elev 13' Rwy 8' | |  | |
| MISSSED APCH: Climb STRAIGHT AHEAD to 1970', then turn RIGHT onto 070° to R-324 TJK to 2960', then turn RIGHT to TJK VOR and join holding, then contact ATC. | | | | | | | |
| Alt Set: hPa | | Rwy Elev: 0 hPa | | Trans level: FL 118 | | Trans alt: 9850' ! | |
| | | | | | | | MSA TAJ VOR |

| FT/METER CONVERSION | |
|---------------------|---------|
| 10830' | - 3300m |
| 9850' | - 3000m |
| 8860' | - 2700m |
| 3940' | - 1200m |
| 2960' | - 900m |
| 1970' | - 600m |
| 1410' | - 430m |
| 760' | - 230m |



| | | | | | |
|-----------------|----------|------|-------|-------|-------|
| LOC (GS out) | TAJ DME | 2.0 | 3.0 | 4.0 | 5.0 |
| | ALTITUDE | 720' | 1030' | 1350' | 1670' |



| | | | | | | | |
|--------------------------------------|-----|-----|-----|-----|-----|-----|--|
| Gnd speed-Kts | 70 | 90 | 100 | 120 | 140 | 160 | |
| ILS GS or LOC Descent Angle 3.00° | 372 | 478 | 531 | 637 | 743 | 849 | |
| MAP at MM/D0.6 TAJ/D0.8 ICG | | | | | | | |

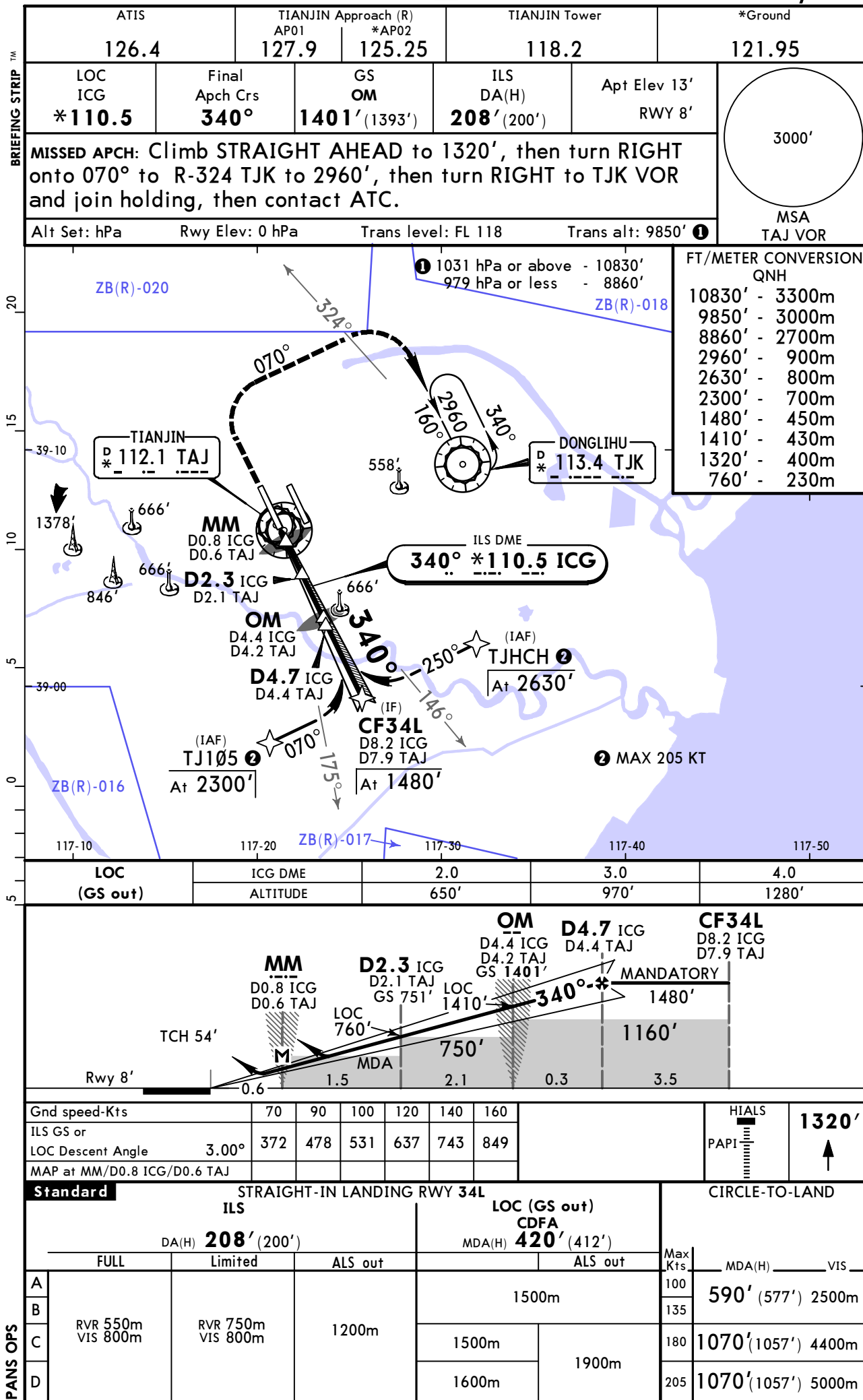
| Standard | | STRAIGHT-IN LANDING RWY 34L | | | | CIRCLE-TO-LAND | |
|----------|----------------------|-----------------------------|---------|----------------------|-------|----------------|------------------------|
| | | ILS | | LOC (GS out) CDFA | | | |
| | | DA(H) 208' (200') | | MDA(H) 420' (412') | | | |
| | | FULL | Limited | ALS out | | ALS out | Max Kts |
| A | RVR 550m VIS 800m | RVR 750m VIS 800m | 1200m | 1500m | | | MDA(H) _____ VIS _____ |
| B | | | | | | 100 | 590' (577') 2500m |
| C | | | | 1500m | 1900m | 180 | |
| D | | | | 1600m | | 205 | 1070' (1057') 5000m |

ZBTJ/TSN
BINHAI

26 JUN 15

(11-7)

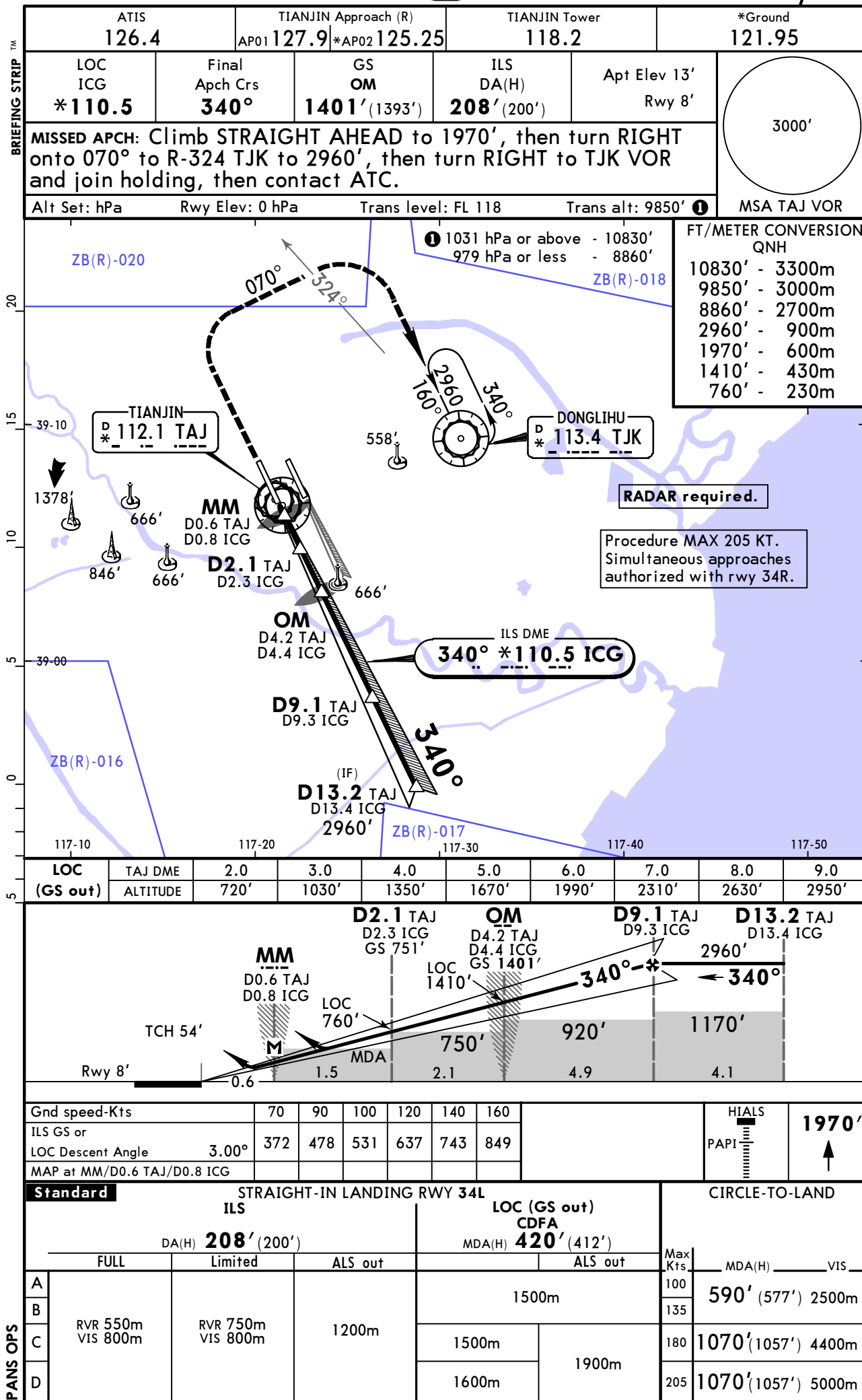
TIANJIN, PR OF CHINA
RNAV ILS DME Y Rwy 34L



ZBTJ/TSN
BINHAI

JEPPESSEN
26 JUN 15 **(11-8)**

TIANJIN, PR OF CHINA
ILS DME X Rwy 34L



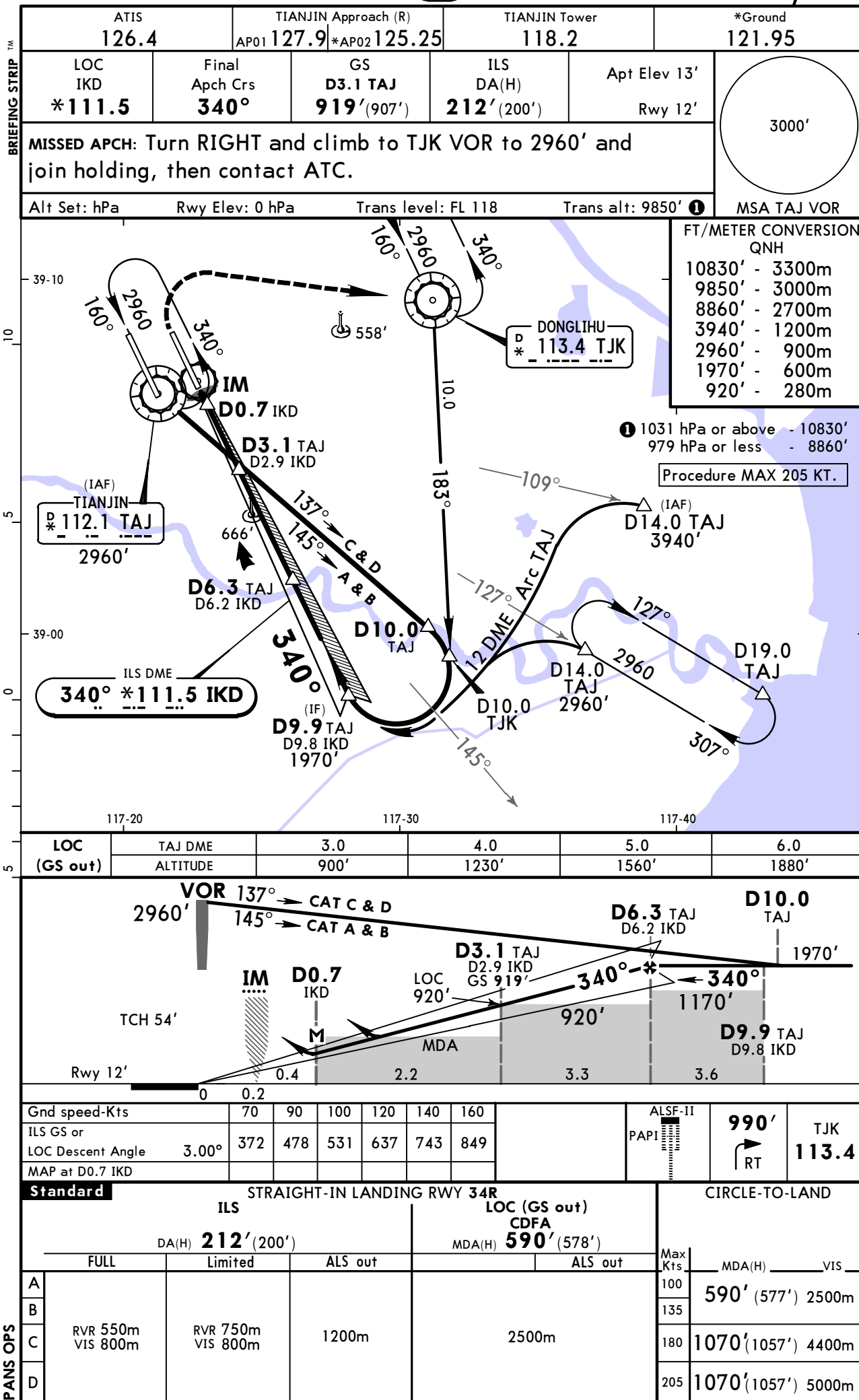
ZBTJ/TSN
BINHAI

26 JUN 15

(11-9)

JEPPESSEN

TIANJIN, PR OF CHINA
ILS DME Z Rwy 34R



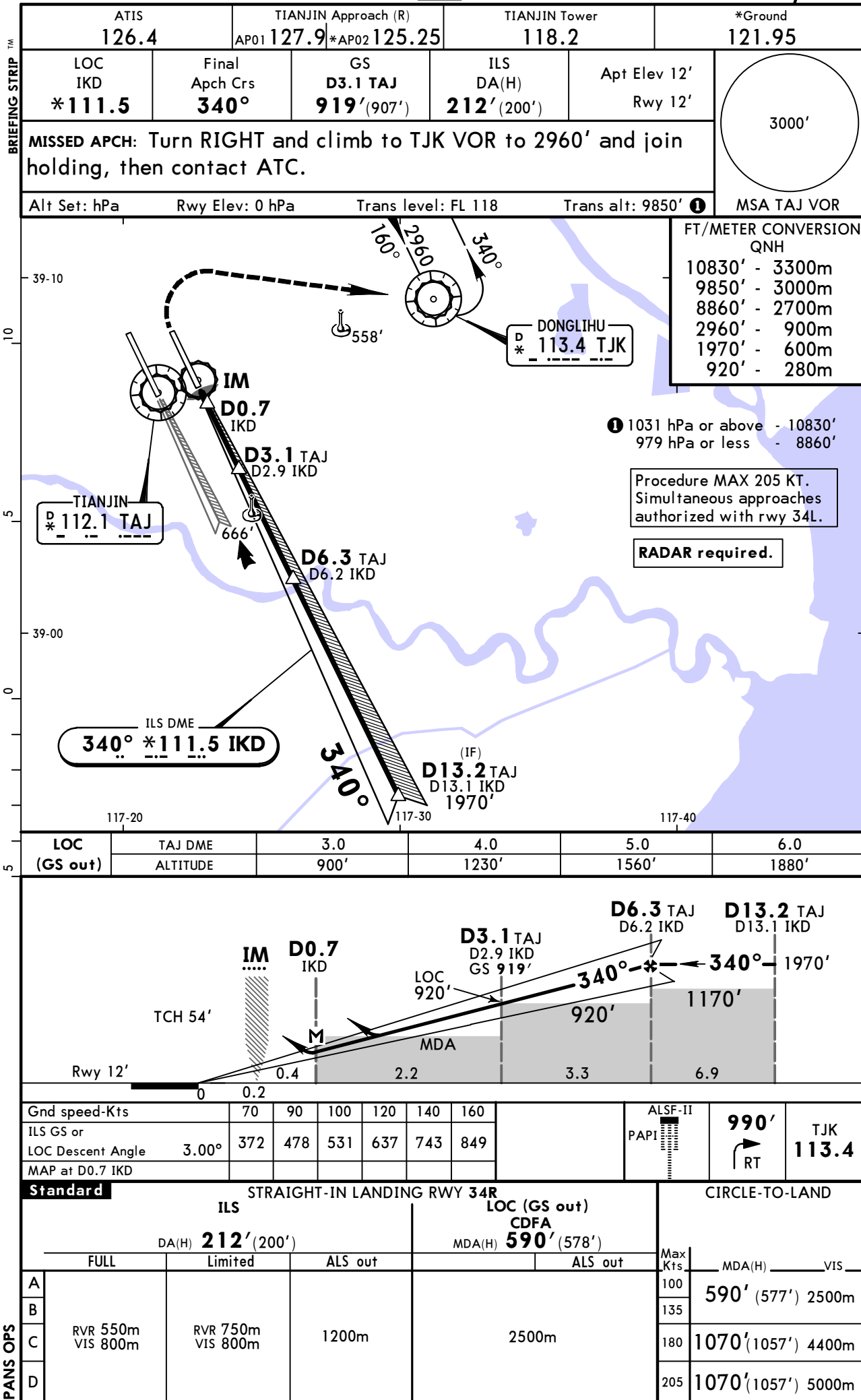
ZBTJ/TSN
BINHAI

26 JUN 15

11-10

JEPPESSEN

TIANJIN, PR OF CHINA
ILS DME Y Rwy 34R



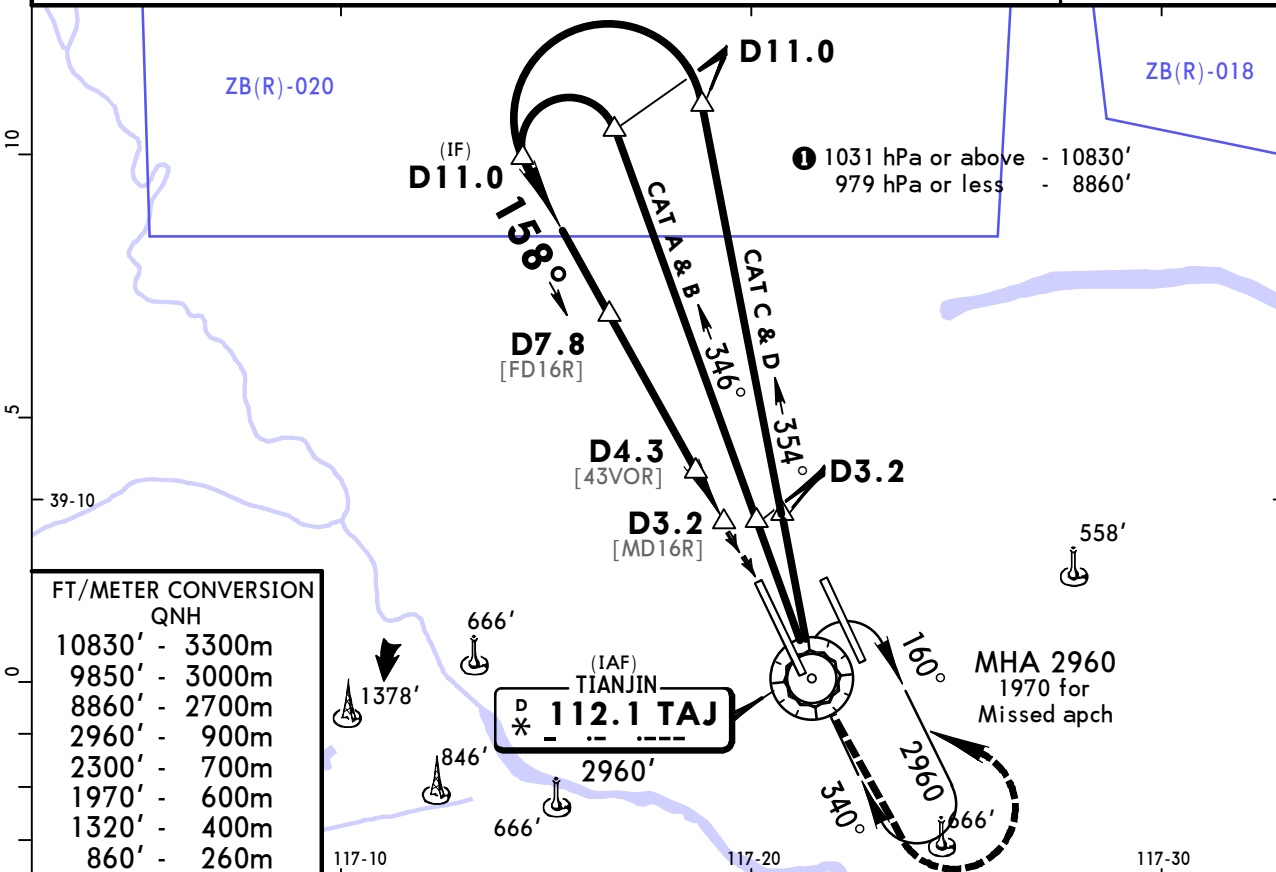
ZBTJ/TSN
BINHAI

JEPPESSEN
26 JUN 15 (13-1)

TIANJIN, PR OF CHINA
VOR DME Rwy 16R

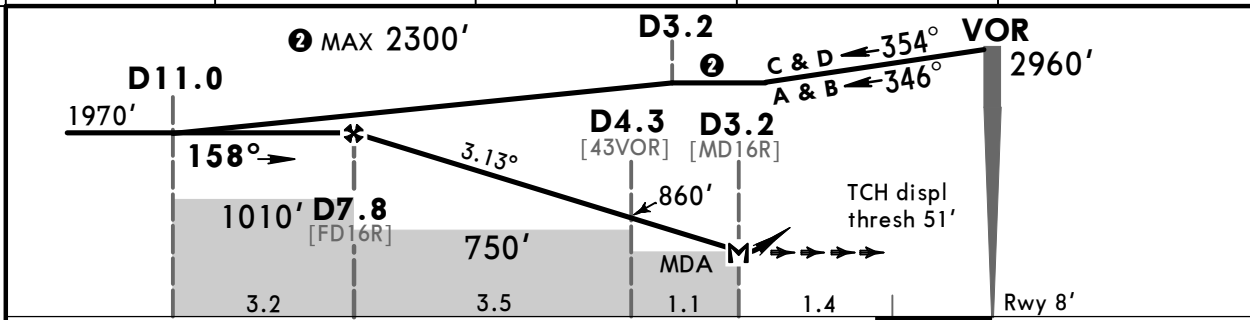
BRIEFING STRIP™

| | | | | | |
|---|---------------------------|---|-----------------------|------------------------|---|
| ATIS 126.4 | | TIANJIN Approach (R) AP01 127.9 *AP02 125.25 | | TIANJIN Tower 118.2 | *Ground 121.95 |
| VOR TAJ *112.1 | Final Apch Crs 158° | Procedure Alt D7.8 1970' (1962') | MDA(H) 560' (552') | Apt Elev 13' Rwy 8' | <div>3000'</div> <div>MSA TAJ VOR</div> |
| MISSED APCH: Climb STRAIGHT AHEAD to 1320', then turn LEFT to reach VOR at 1970'. | | | | | |
| Alt Set: hPa Rwy Elev: 0 hPa Trans level: FL 118 Trans alt: 9850' ① Procedure MAX 205 KT. | | | | | |



| FT/METER CONVERSION QNH | |
|----------------------------|-------|
| 10830' - | 3300m |
| 9850' - | 3000m |
| 8860' - | 2700m |
| 2960' - | 900m |
| 2300' - | 700m |
| 1970' - | 600m |
| 1320' - | 400m |
| 860' - | 260m |

| | | | | |
|----------|-------|-------|-------|------|
| TAJ DME | 7.0 | 6.0 | 5.0 | 4.0 |
| ALTITUDE | 1700' | 1390' | 1070' | 760' |



| | | | | | | | | | | |
|---------------|-------|-----|-----|-----|-----|-----|---------------|-------|-------|--------------|
| Gnd speed-Kts | 70 | 90 | 100 | 120 | 140 | 160 | HIALS PAPI | 1320' | 1970' | TAJ 112.1 |
| Descent Angle | 3.13° | 388 | 498 | 554 | 665 | 775 | | ↑ | ↩ | |
| MAP at D3.2 | | | | | | | | | | |

| PANS OPS | STRAIGHT-IN LANDING RWY 16R | | | | CIRCLE-TO-LAND | | | |
|----------|-----------------------------|--|--|--|----------------|---------------|--|--|
| | CDFA | | | | | | | |
| | MDA(H) 560' (552') | | | | | | | |
| | ALS out | | | | | | | |
| A | | | | | Max Kts | | | |
| B | | | | | 100 | 590' (577') | | |
| C | 2400m | | | | 135 | 2500m | | |
| D | | | | | 180 | 1070' (1057') | | |
| | | | | | 205 | 1070' (1057') | | |

ZBTJ/TSN
BINHAI

JEPPESSEN
26 JUN 15 (13-2)

TIANJIN, PR OF CHINA
VOR DME Rwy 34L

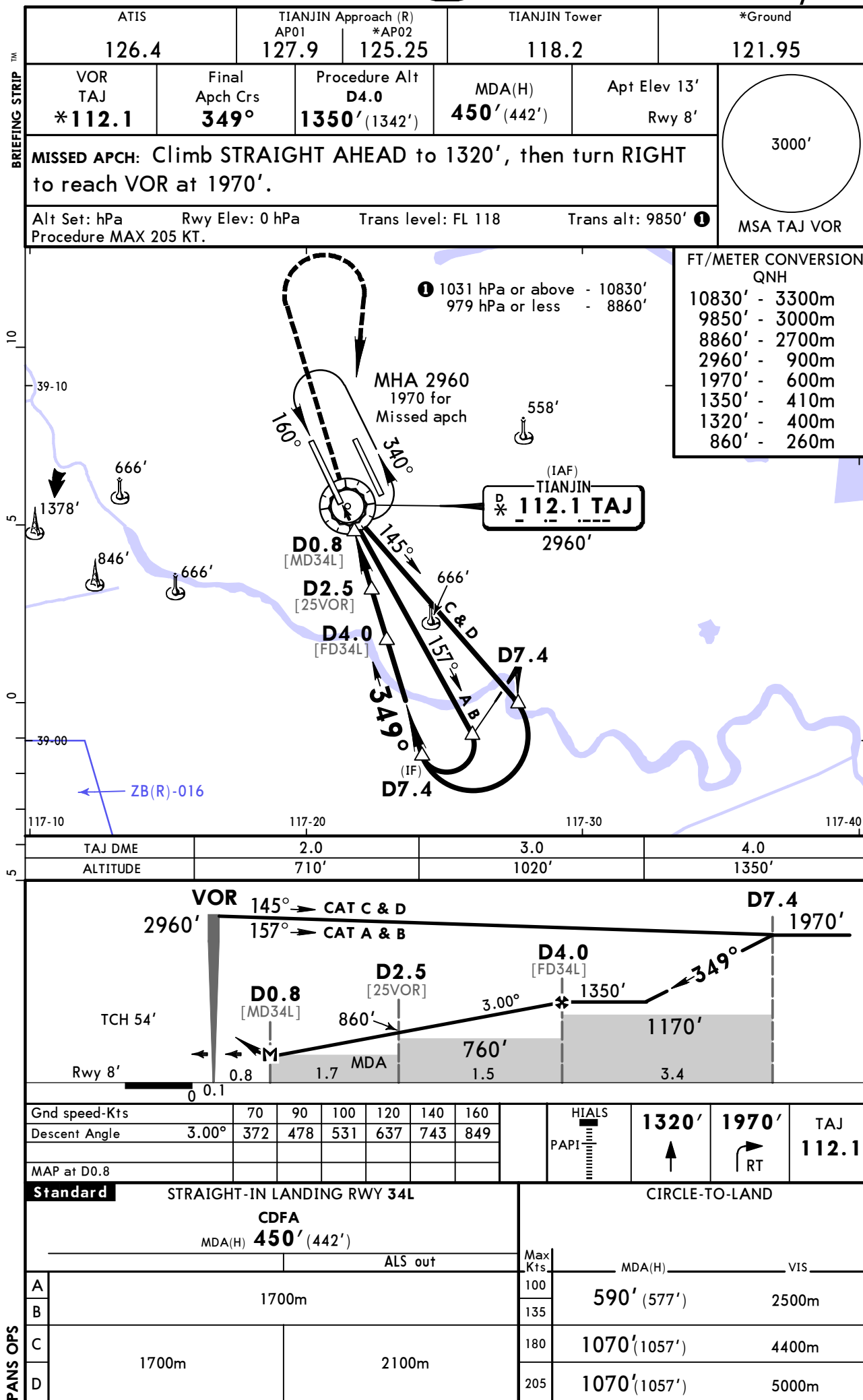


Chart changes since cycle 18-2016

ADD = added chart, REV = revised chart, DEL = deleted chart.

| ACT | PROCEDURE IDENT | INDEX | REV DATE | EFF DATE |
|--------------------------|-----------------|-------|----------|----------|
| TIANJIN, (BINHAI - ZBTJ) | | | | |

TERMINAL CHART CHANGE NOTICES

Chart Change Notices for Airport ZBTJ

Type: Terminal

Effectivity: Temporary

Begin Date: Immediately

End Date: 20161031

For all ILS procedures rwy 16L (11-1/11-2) missed approach revised to read: Climb STRAIGHT AHEAD, then turn LEFT to TJK VOR, climb to 1970ft, then by ATC. For all ILS procedures rwy 34R (11-9/11-10) missed approach revised to read: Climb STRAIGHT AHEAD, then turn RIGHT to TJK VOR, climb to 1970ft, then by ATC.

Chart Change Notices for Country CHN

Type: Gen Tmnl

Effectivity: Permanent

Begin Date: 20150429

End Date: No end date

At the following airports disregard the note "QNH on req" as QFE is avbl only: ZGNN, ZSQZ, ZSWX, ZYJM, ZYMD, ZYQQ and ZYYJ.