

List of pages in this Trip Kit

Trip Kit Index

Airport Information For ZYTX

Terminal Charts For ZYTX

Revision Letter For Cycle 19-2016

Change Notices

Notebook

General Information

Location: SHENYANG CHN
ICAO/IATA: ZYTX / SHE
Lat/Long: N41°38.5', E123°29.1'
Elevation: 200 ft

Airport Use: Public
Daylight Savings: Not Observed
UTC Conversion: -8:00 = UTC
Magnetic Variation: 8.0°W

Fuel Types: Jet
Repair Types: Minor Airframe, Minor Engine
Customs: Yes
Airport Type: IFR
Landing Fee: Yes
Control Tower: Yes
Jet Start Unit: No
LLWS Alert: No
Beacon: No

Sunrise: 2305 Z
Sunset: 0816 Z

Runway Information

Runway: 06
Length x Width: 10499 ft x 148 ft
Surface Type: asphalt
TDZ-Elev: 170 ft
Lighting: Edge, ALS, Centerline

Runway: 24
Length x Width: 10499 ft x 148 ft
Surface Type: asphalt
TDZ-Elev: 198 ft
Lighting: Edge, ALS, Centerline

Communication Information

ATIS: 127.450
Shenyang Tower: 124.300 Secondary
Shenyang Tower: 118.100
Taoxian Ground: 121.900
Taoxian Clearance Delivery: 121.675
Shenyang Approach: 125.550 Secondary
Shenyang Approach: 120.850
Shenyang Approach: 119.825

ZYTX/SHE
TAOXIAN

JEPPESEN

18 SEP 15

10-1P

SHENYANG, PR OF CHINA

AIRPORT BRIEFING

1. GENERAL

1.1. ATIS

D-ATIS 127.45

1.2. TAXI PROCEDURES

1.2.1. GENERAL

Fast engine run-ups near boarding bridges or on apron are strictly forbidden.
180° turns on asphalt surface prohibited.

1.3. HOLDING POINTS ON TWYs

Holding points HP03 thru HP06 in taxi direction North.

Holding points AH03 thru AH06 in taxi direction South.

Holding point AH02 in taxi direction East and West.

1.4. OTHER INFORMATION

In order to avoid frequency congestion, ACFT shall leave TWR frequency without radiotelephony instruction from controller.

RWY 06 right-hand circuit.

Birds.

2. ARRIVAL

2.1. TAXI PROCEDURES

ACFT shall vacate RWY as soon as possible (within 50 seconds after touchdown); otherwise inform ATC before landing.

RWY 24 in use: Landing ACFT shall taxi into apron of Terminal 1 and Terminal 2 via TWY H and G and taxi into apron Terminal 3 via TWY J, A, R (or P) or TWY K, A and R.

ACFT cannot vacate TWY A via TWY M and N.

RWY 06 in use: Landing ACFT shall taxi into apron of Terminal 1, Terminal 2 and Terminal 3 via TWY E and G.

3. DEPARTURE

3.1. TAXI PROCEDURES

Departing ACFT shall inform ATC at the holding positions if occupying the RWY more than 1 MIN.

Departing ACFT shall taxi into ILS protection area of RWY 06 via TWY R and A.

Flight crew shall avoid RWY incursion by missing TWY A and taxiing into rapid exit TWY K and pay attention to the ACFT on TWY A at the same time to avoid intersection collide.

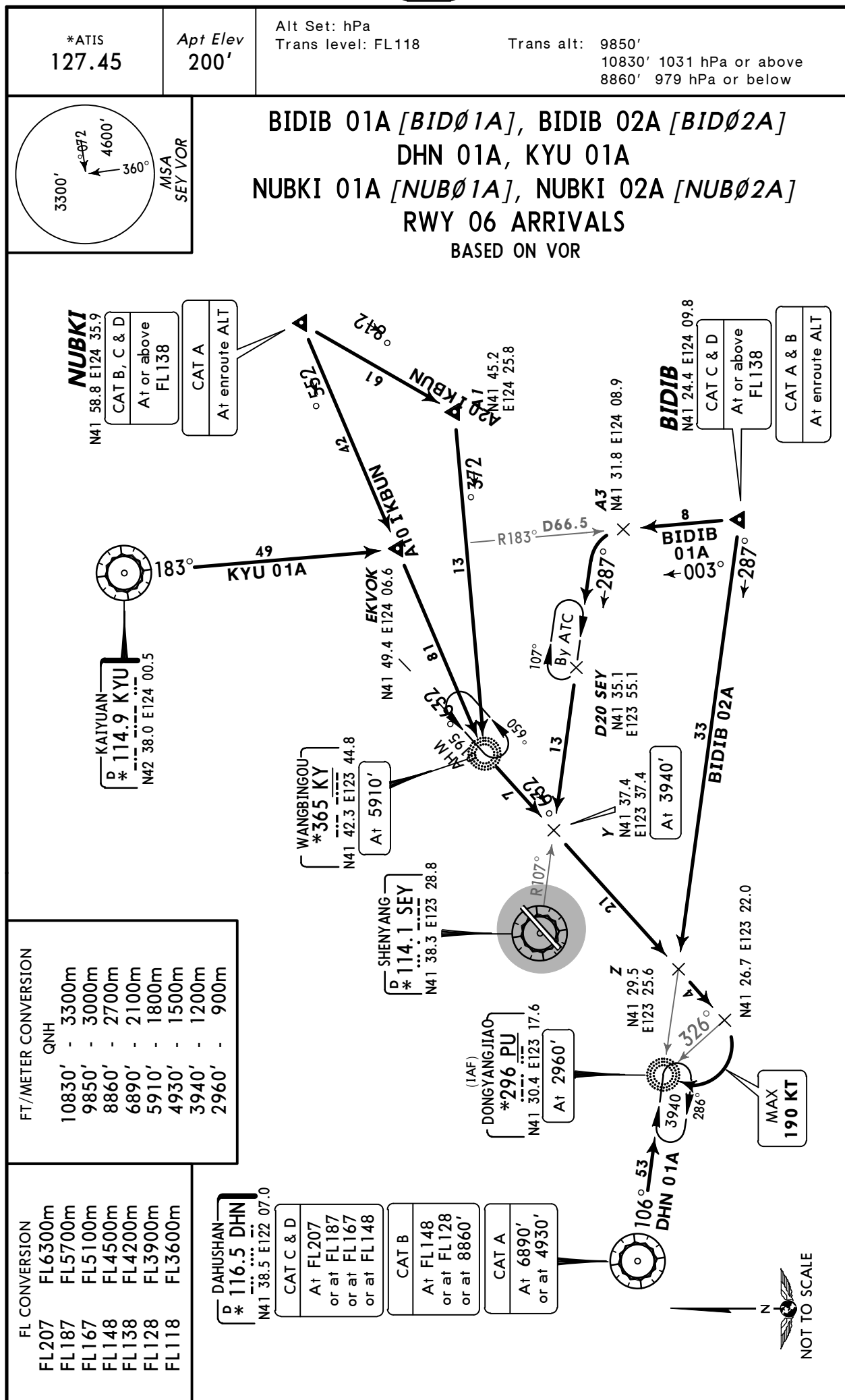
3.2. OTHER INFORMATION

ACFT shall keep the TWR frequency before departure or assigned by ATC clearance. Departure ACFT shall pay attention to ATIS before start-up and apply for ATC clearance according to the frequency ATIS indicated.

The delivery application shall be applied within 10 MIN before start-up. Flight crew shall execute the instruction within 5 MIN after getting the clearance, otherwise the flight crew shall apply for the instruction again.

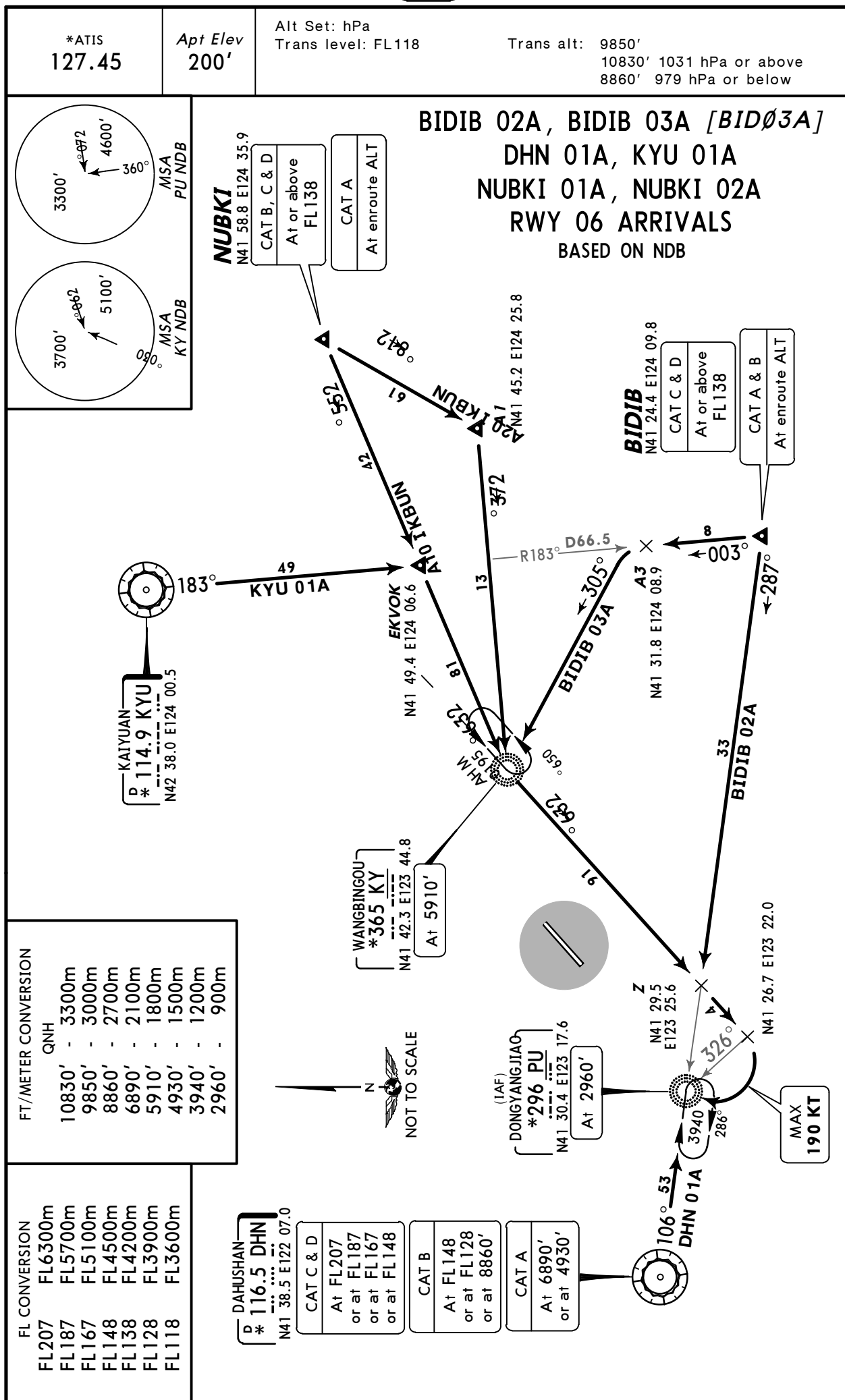
ZYTX/SHE
TAOXIAN

JEPPESSEN SHENYANG, PR OF CHINA
15 OCT 10 **10-2** **Eff 21 Oct** **STAR**



CHANGES: Waypoint designators Y & Z established.

© JEPPESSEN, 2004, 2010. ALL RIGHTS RESERVED.

ZYTX/SHE
TAOXIAN
JEPPESSEN SHENYANG, PR OF CHINA
 15 OCT 10 **10-2A** **Eff 21 Oct** **STAR**


CHANGES: Waypoint designator Z established.

© JEPPESSEN, 2004, 2010. ALL RIGHTS RESERVED.

ZYTX/SHE
TAOXIAN

JEPPesen SHENYANG, PR OF CHINA
20 JUL 12 (10-2B) Eff 26 Jul **STAR**

*ATIS
127.45

Apt Elev
200'

Alt Set: hPa
Trans level: FL118

Trans alt: 9850'
10830' 1031 hPa or above
8860' 979 hPa or below

BIDIB 11A [*BID11A*]

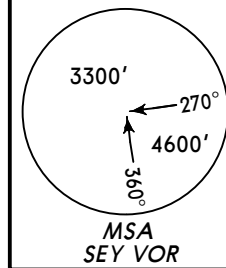
BY ATC

BIDIB 12A [*BID12A*], **BIDIB 13A** [*BID13A*]

BIDIB 14A [*BID14A*], **BIDIB 15A** [*BID15A*]

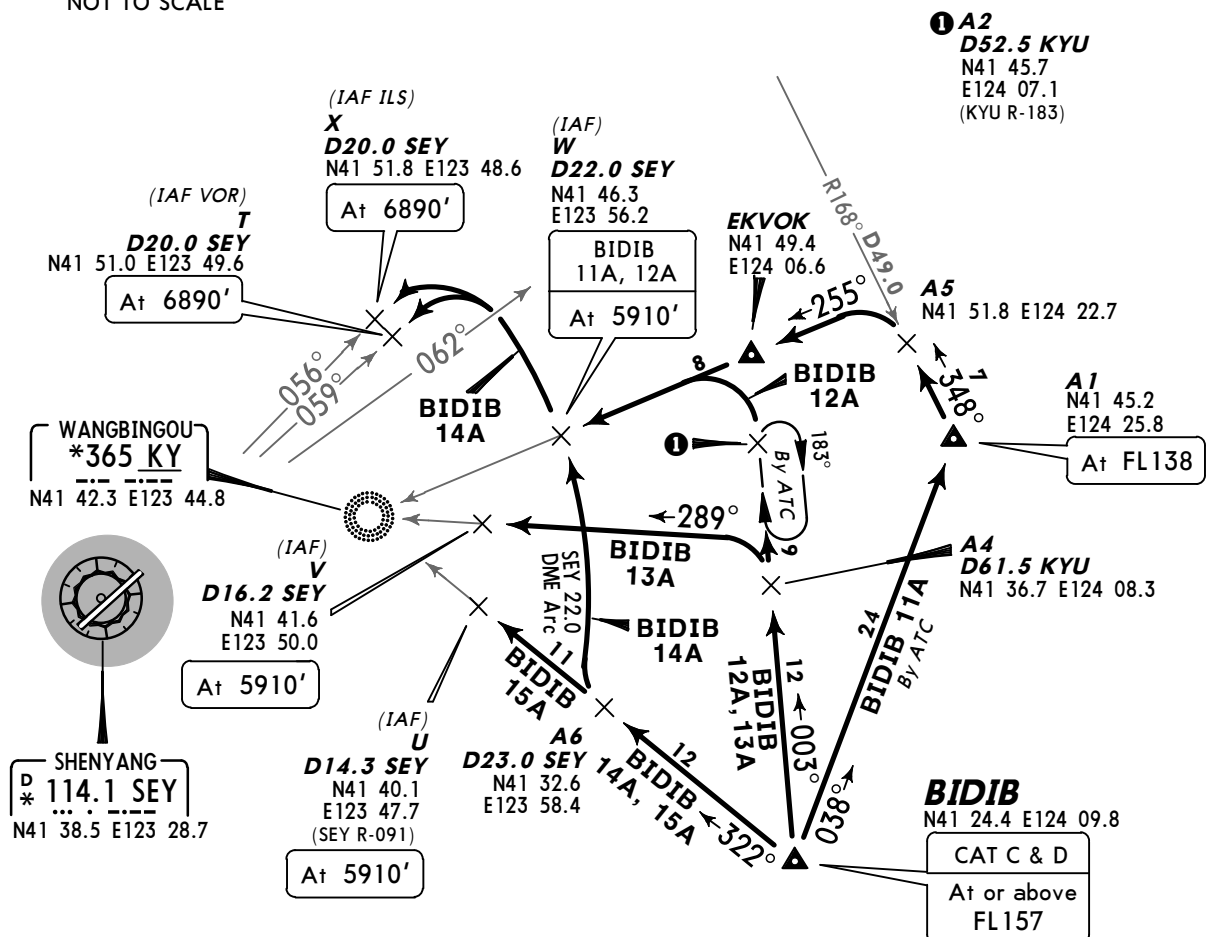
RWY 24 ARRIVALS

BASED ON VOR



NOT TO SCALE

KAIYUAN
D
(H) *114.9 KYU
N42 37.9 E124 00.4



FL CONVERSION

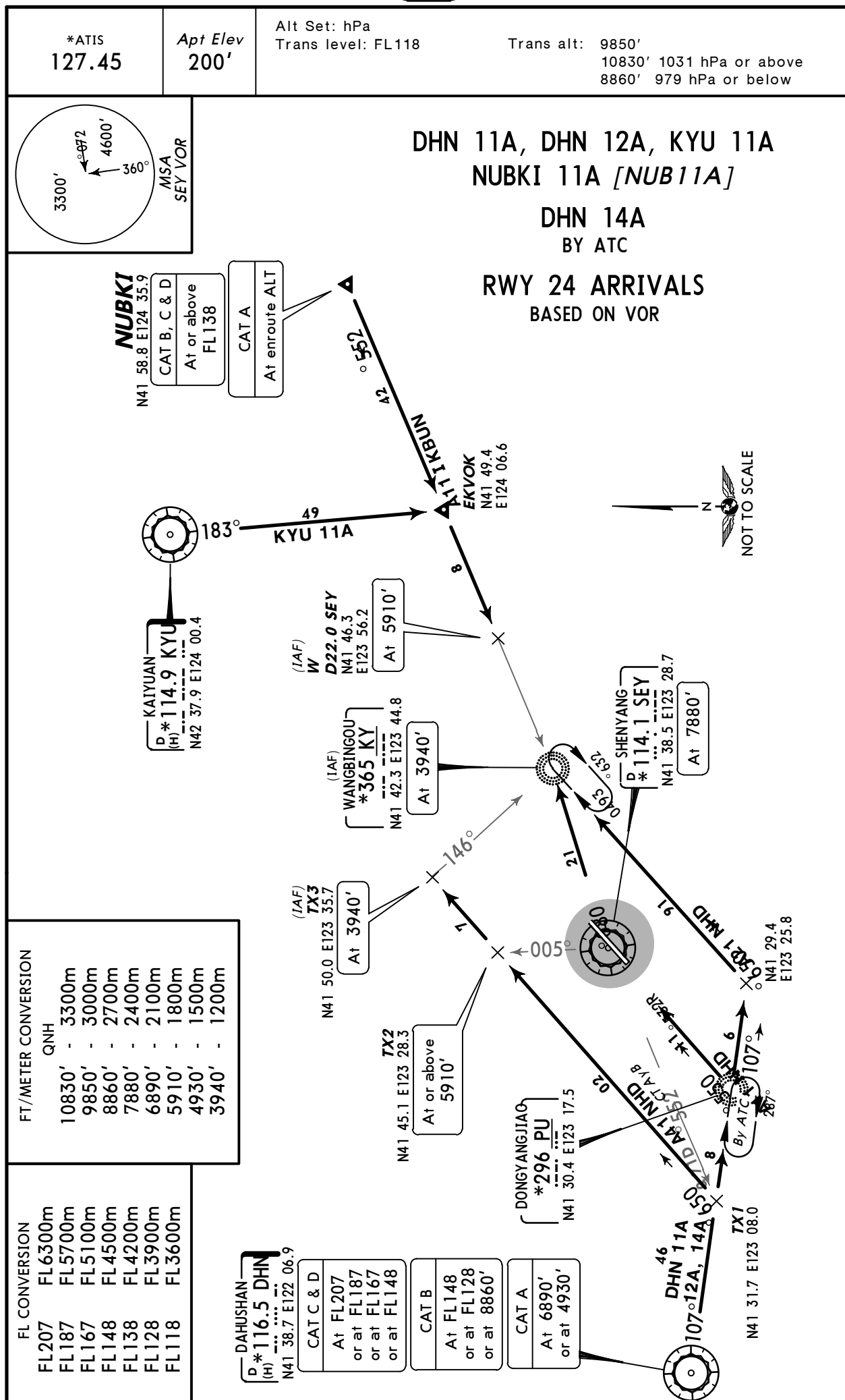
FL157	FL4800m
FL138	FL4200m
FL118	FL3600m

FT/METER CONVERSION

QNH	
10830'	- 3300m
9850'	- 3000m
8860'	- 2700m
6890'	- 2100m
5910'	- 1800m

ZYTX/SHE
TAOXIAN

JEPPESSEN SHENYANG, PR OF CHINA
20 JUL 12 **10-2C** **Eff 26 Jul** **STAR**

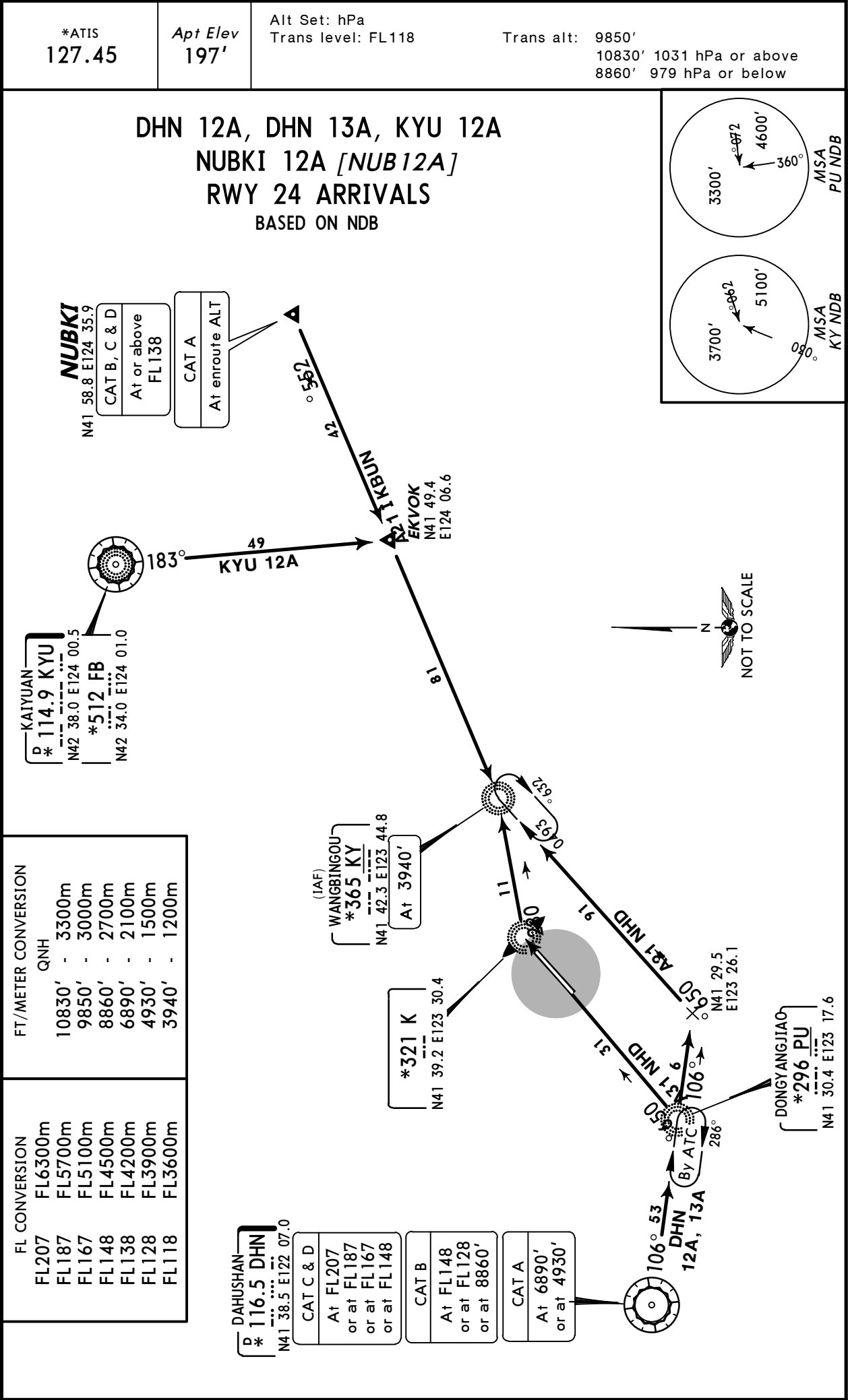


CHANGES: STAR DHN 14A established; crossings over KY & SEY.

© JEPPESSEN, 2009, 2012. ALL RIGHTS RESERVED.

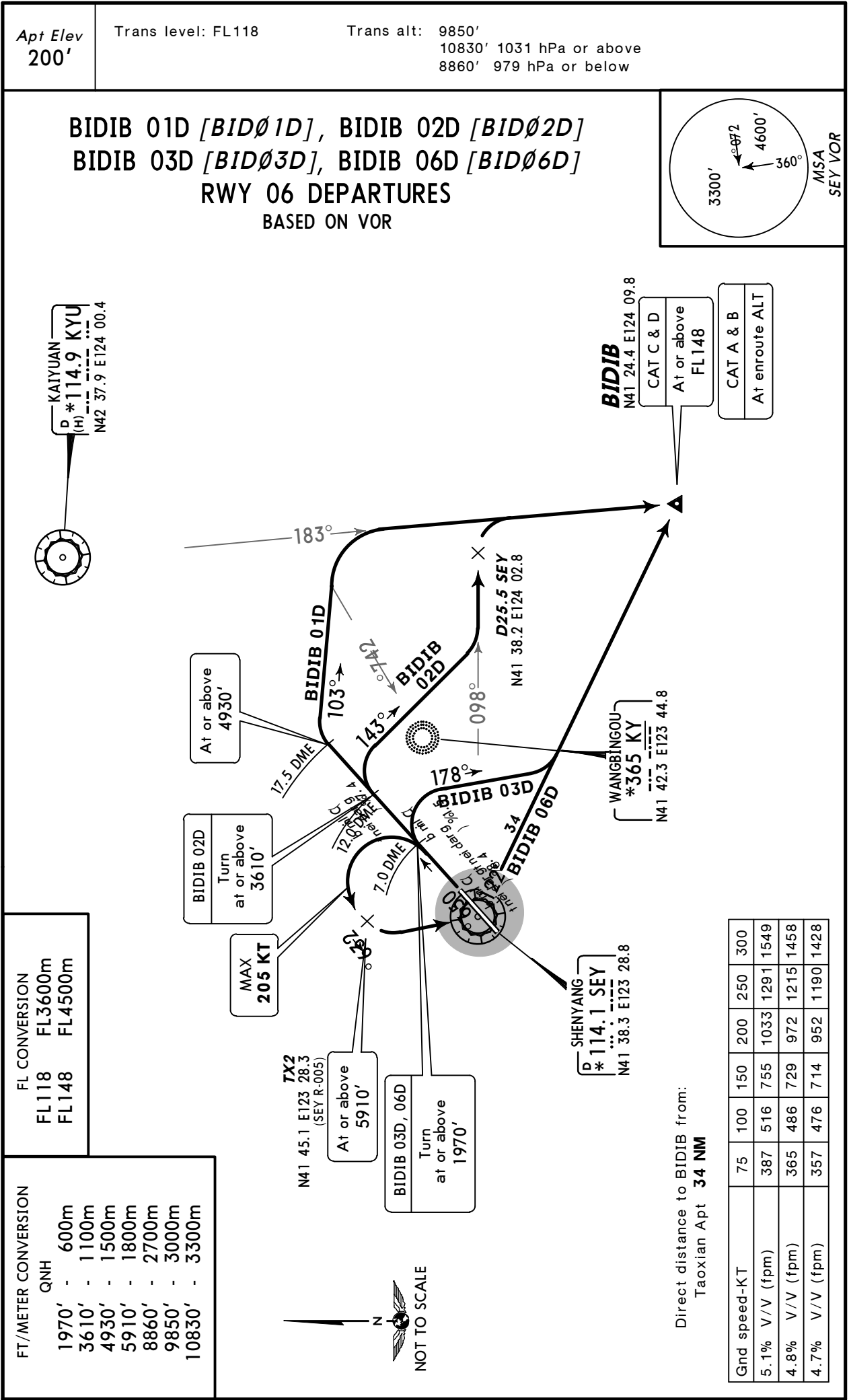
ZYTX/SHE
TAOXIAN

JEPPESSEN SHENYANG, PR OF CHINA
6 FEB 09 10-2E Eff 12 Feb STAR



ZYTX/SHE
TAOXIAN

JEPPESSEN SHENYANG, PR OF CHINA
20 JUL 12 10-3 Eff 26 Jul SID



ZYTX/SHE
TAOXIAN

JEPPESS
20 JUL 12 10-3A

EN SHEN
Eff 26 Jul

SHENYANG, PR OF CHINA

SID

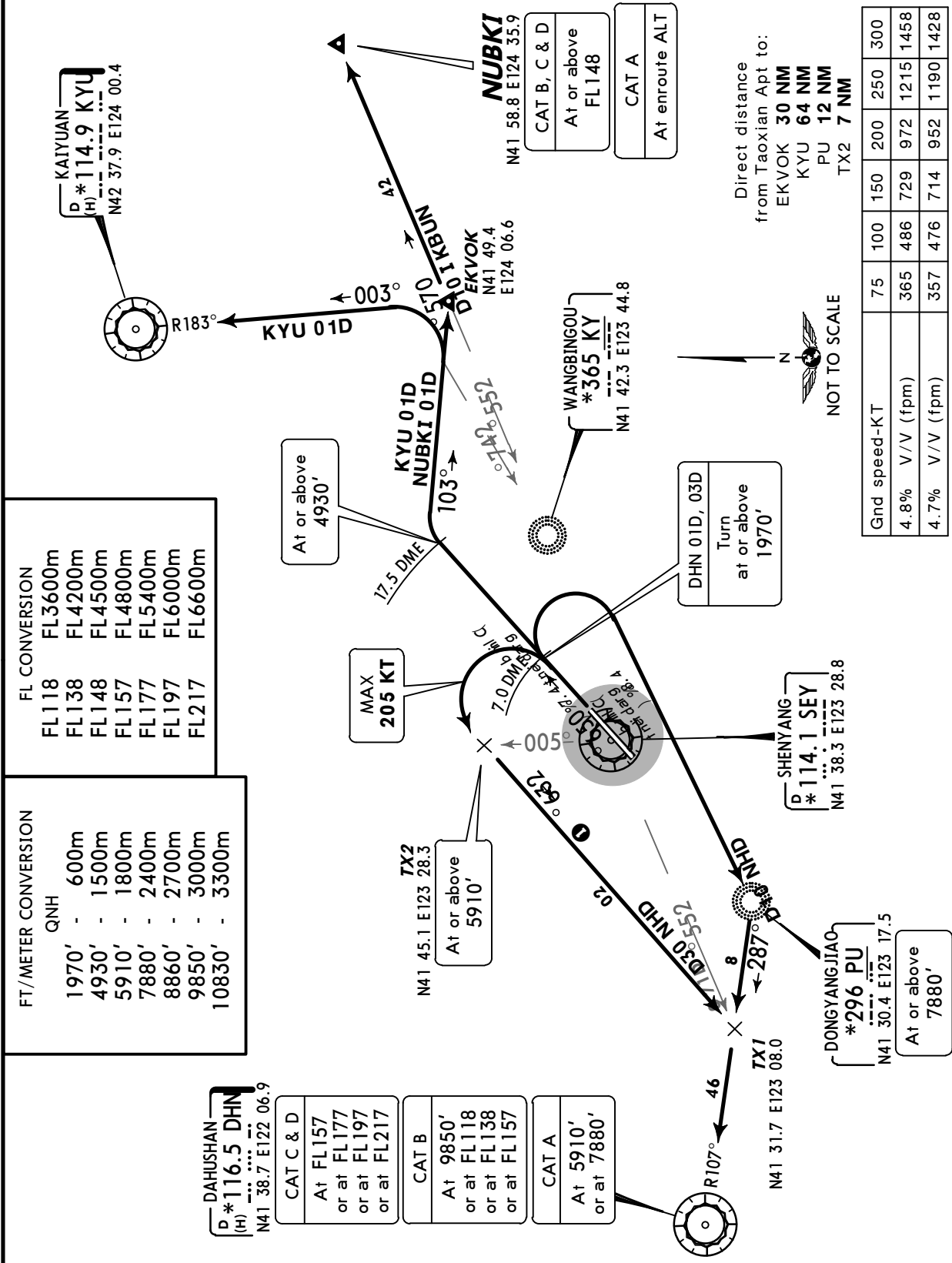
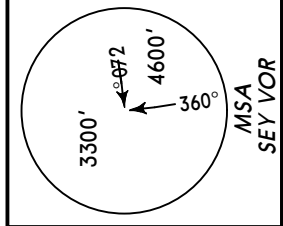
Apt Elev
200'

Trans level: FL118

Trans alt: 9850'
10830' 1031 hPa or above
8860' 979 hPa or below

DHN 01D, DHN 03D ❶, KYU 01D
NUBKI 01D [NUBØ1D]
RWY 06 DEPARTURES
BASED ON VOR

1 By ATC.



ZYTX/SHE
TAOXIAN

JEPPESS
20 JUL 12 10-3B

EN SHEN
Eff 26 Jul

HINA
SID

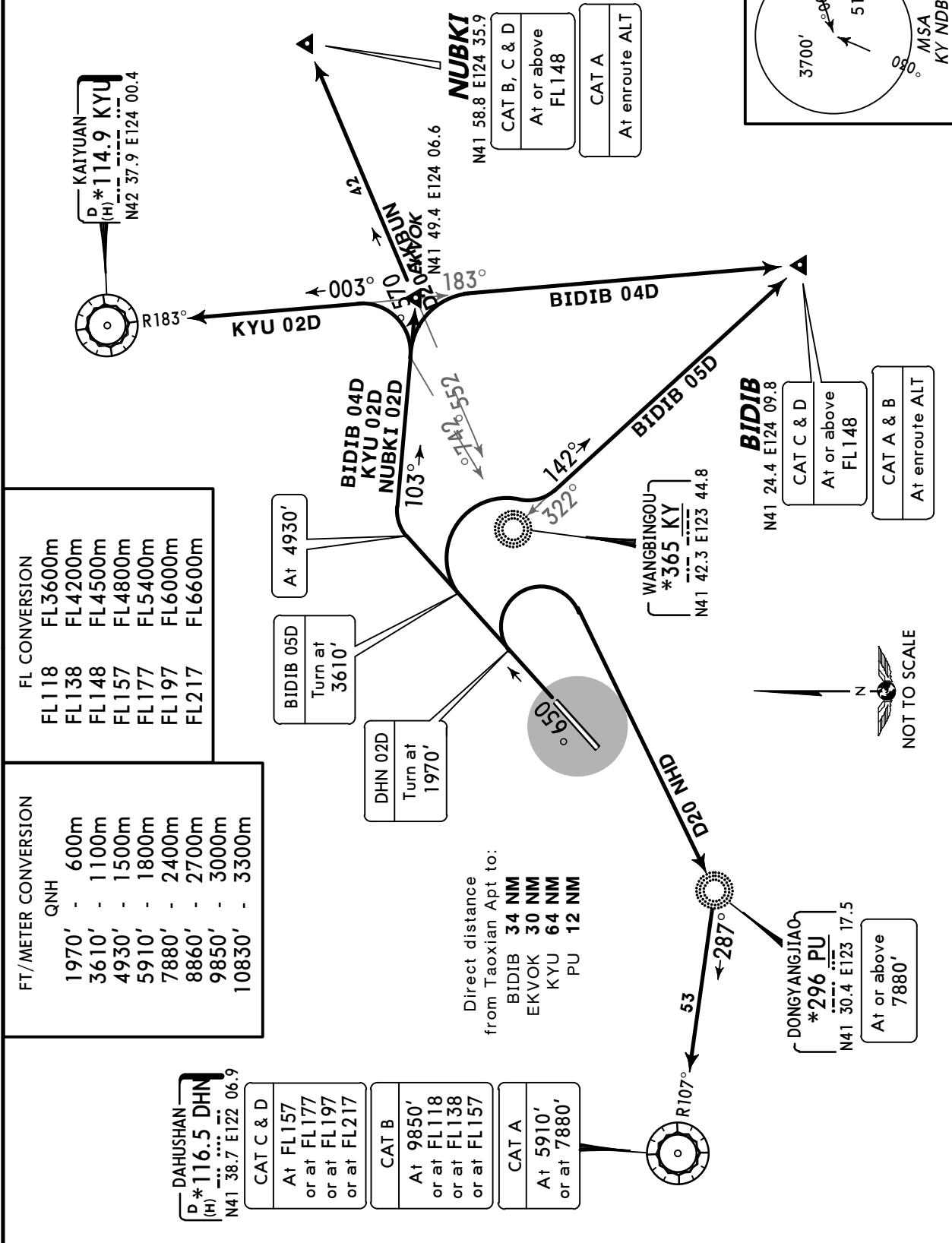
JEPPESSEN SHENYANG, PR OF CHINA

Apt Elev
200'

Trans level: FL118

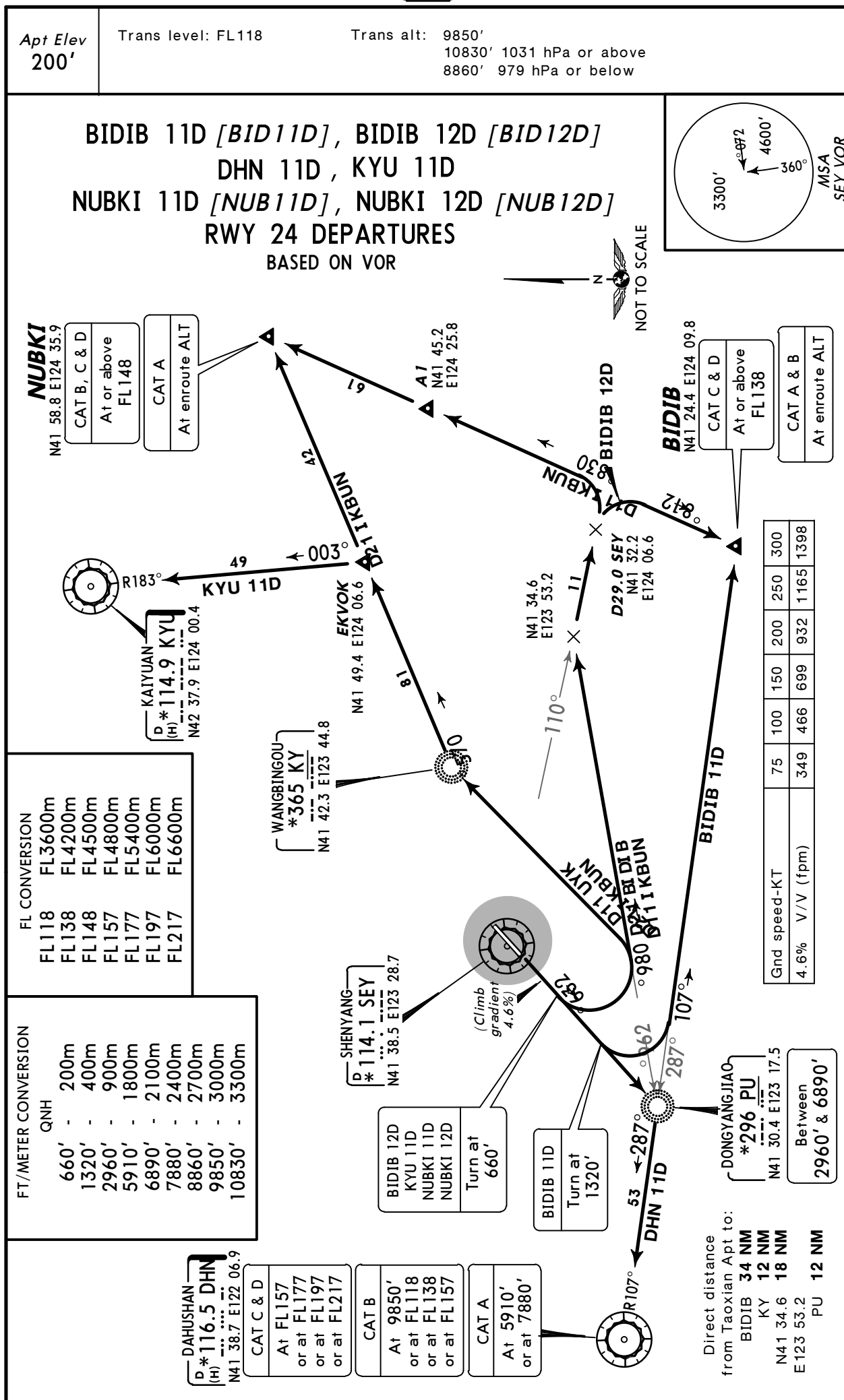
Trans alt: 9850'
10830' 1031 hPa or above
8860' 979 hPa or below

BIDIB 04D [*BIDØ4D*], BIDIB 05D [*BIDØ5D*]
 DHN 02D , KYU 02D
 NUBKI 02D [*NUBØ2D*]
 RWY 06 DEPARTURES
 BASED ON NDB



ZYTX/SHE
TAOXIAN

JEPPESSEN SHENYANG, PR OF CHINA
20 JUL 12 **10-3C** **Eff 26 Jul** **SID**



ZYTX/SHE
TAOXIAN

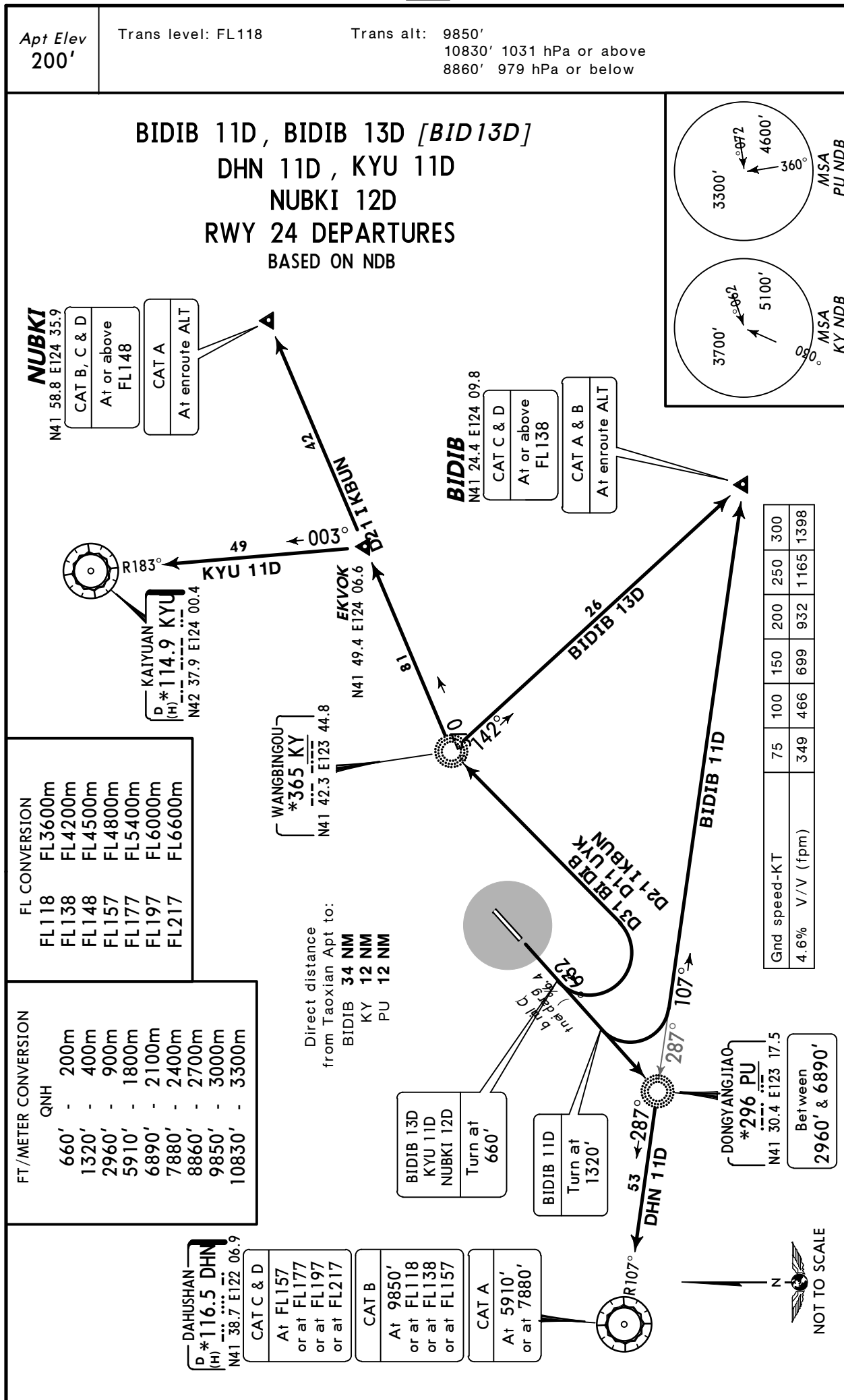
20 JUL 12

10-3D

Eff 26 Jul

SID

JEPPESSEN SHENYANG, PR OF CHINA



ZYTX/SHE

Apt Elev 200'

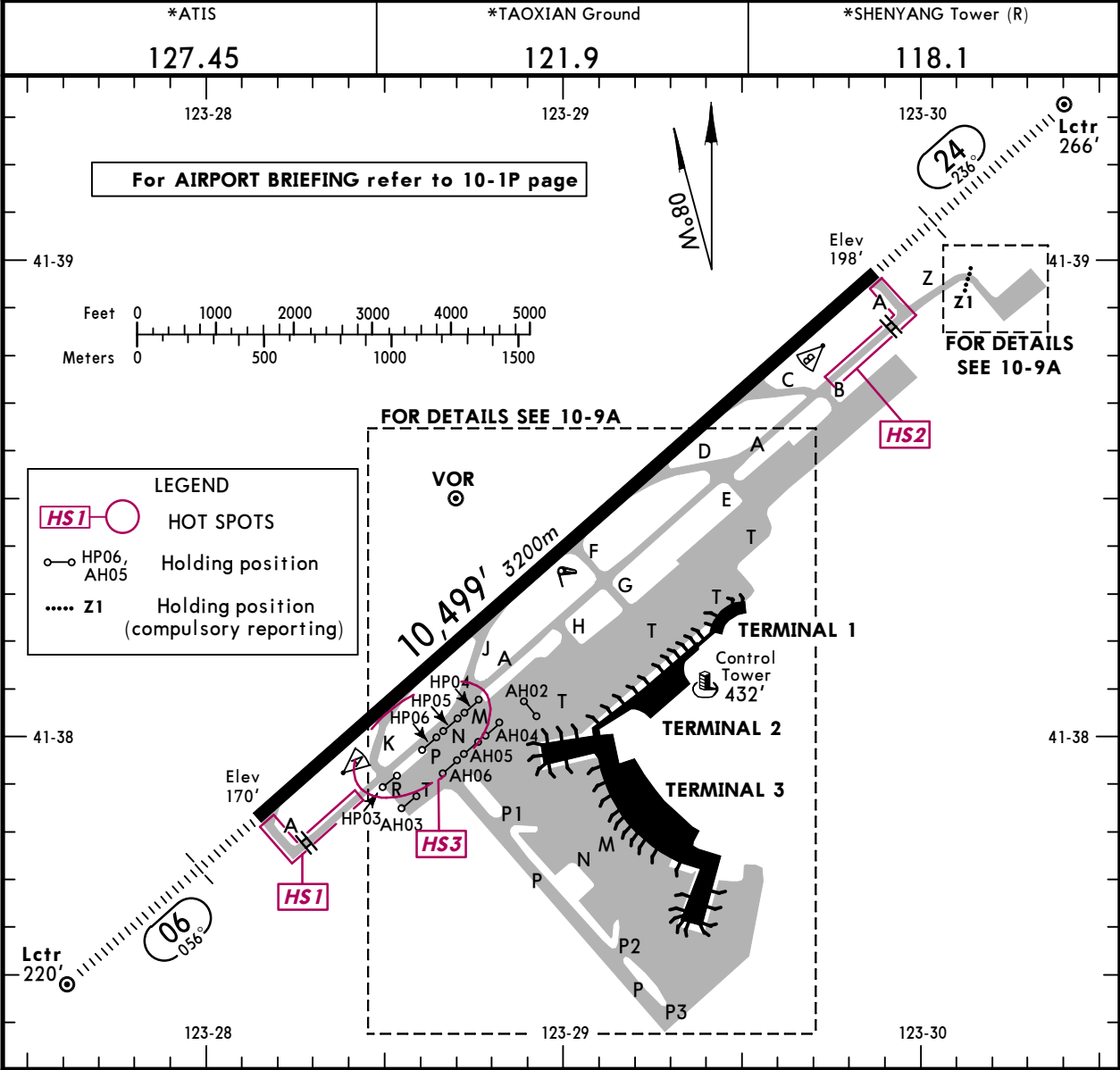
N41 38.5 E123 29.1

JEPPESEN SHENYANG, PR OF CHINA

10 OCT 14 (10-9)

Eff 15 Oct 1600Z

TAOXIAN



ADDITIONAL RUNWAY INFORMATION

RWY						USABLE LENGTHS		TAKE-OFF	WIDTH
	HIRL (60m)	CL (30m)	HIALS	SFL	RVR	Threshold	Glide Slope		
06	HIRL (60m)	CL (30m)	HIALS	SFL ①	RVR		9548' 2910m		148'
24	HIRL (60m)	CL (30m)	HIALS	SFL ②	RVR		9505' 2897m		45m

- ① PAPI-L (angle 3.00°) HST-D
② PAPI-L (angle 3.02°) HST-J & K

HOT SPOTS

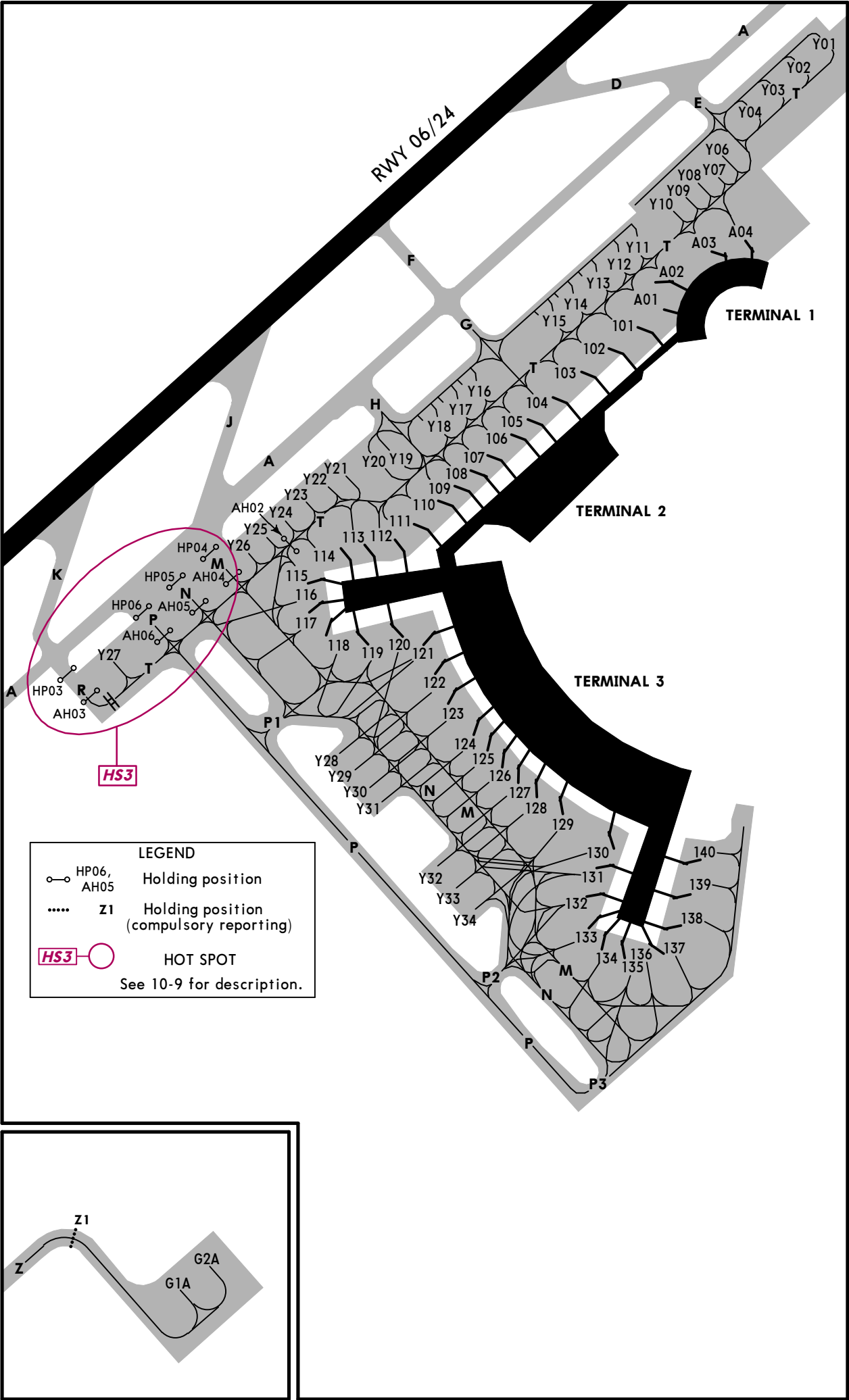
(For information only, not to be construed as ATC instructions.)

- HS1 HS2 ILS protection area for RWY 06/24.
Acft shall wait outside of the ILS protection area when using RWY 06/24.
ATC permission is needed before getting into these areas.
- HS3 Intersection of TWYs A, R and taxi lane M, N and P:
Acft shall follow ATC instructions when operate in this complicated area.

TAKE-OFF		
All Rwys		
	RL	NIL (DAY only)
2 TURB Eng or 3 & 4 Eng	RVR 400m	RVR 500m
Other	VIS 1600m	

ZYTX/SHE

JEPPESSEN SHENYANG, PR OF CHINA
10 OCT 14 (10-9A) Eff 15 Oct 1600Z TAOXIAN



ZYTX/SHE
 **JEPPESSEN**
Standard

11 OCT 13
Eff 17 Oct
(10-9S)
SHENYANG, PR OF CHINA
TAOXIAN

STRAIGHT-IN RWY		A	B	C	D
06	ILS	370' (200')	370' (200')	370' (200')	383' (213')
	<i>FULL</i>	R550m V800m	R550m V800m	R550m V800m	R550m V800m
	<i>Limited</i>	R750m V800m	R750m V800m	R750m V800m	R750m V800m
	<i>ALS out</i>	1200m	1200m	1200m	1200m
	LOC ❶	550' (380')	550' (380')	550' (380')	550' (380')
		1300m	1300m	1300m	1300m
	<i>ALS out</i>	1500m	1500m	1700m	1700m
	VOR ❶	580' (410')	580' (410')	580' (410')	580' (410')
		1500m	1500m	1500m	1500m
	<i>ALS out</i>	1500m	1500m	1900m	1900m
24	NDB ❶	580' (410')	580' (410')	580' (410')	580' (410')
		1500m	1500m	1500m	1500m
	<i>ALS out</i>	1500m	1500m	1900m	1900m
	ILS	411' (213')	411' (213')	428' (230')	428' (230')
	<i>FULL</i>	R550m V800m	R550m V800m	R550m V800m	R550m V800m
	<i>Limited</i>	R750m V800m	R750m V800m	R750m V800m	R750m V800m
	<i>ALS out</i>	1200m	1200m	1200m	1200m
	LOC ❶	550' (352')	550' (352')	550' (352')	550' (352')
		1200m	1200m	1200m	1200m
	<i>ALS out</i>	1500m	1500m	1600m	1600m
	VOR ❶	680' (482')	680' (482')	680' (482')	680' (482')
		1900m	1900m	1900m	1900m
	<i>ALS out</i>	1900m	1900m	2300m	2300m
	NDB ❶	680' (482')	680' (482')	680' (482')	680' (482')
		1900m	1900m	1900m	1900m
	<i>ALS out</i>	1900m	1900m	2300m	2300m

❶ Continuous Descent Final Approach.

CIRCLE-TO-LAND ❷	100 KT	135 KT	180 KT	205 KT
	860' (660')	860' (660')	1050' (850')	1090' (890')
	V1600m	V1600m	V3600m	V4000m

❷ Not authorized North of rwy.

TAKE-OFF RWY 06, 24

RL		NIL (DAY only)
2 TURB Eng or 3 & 4 Eng	R400m	R500m
Other	V1600m	

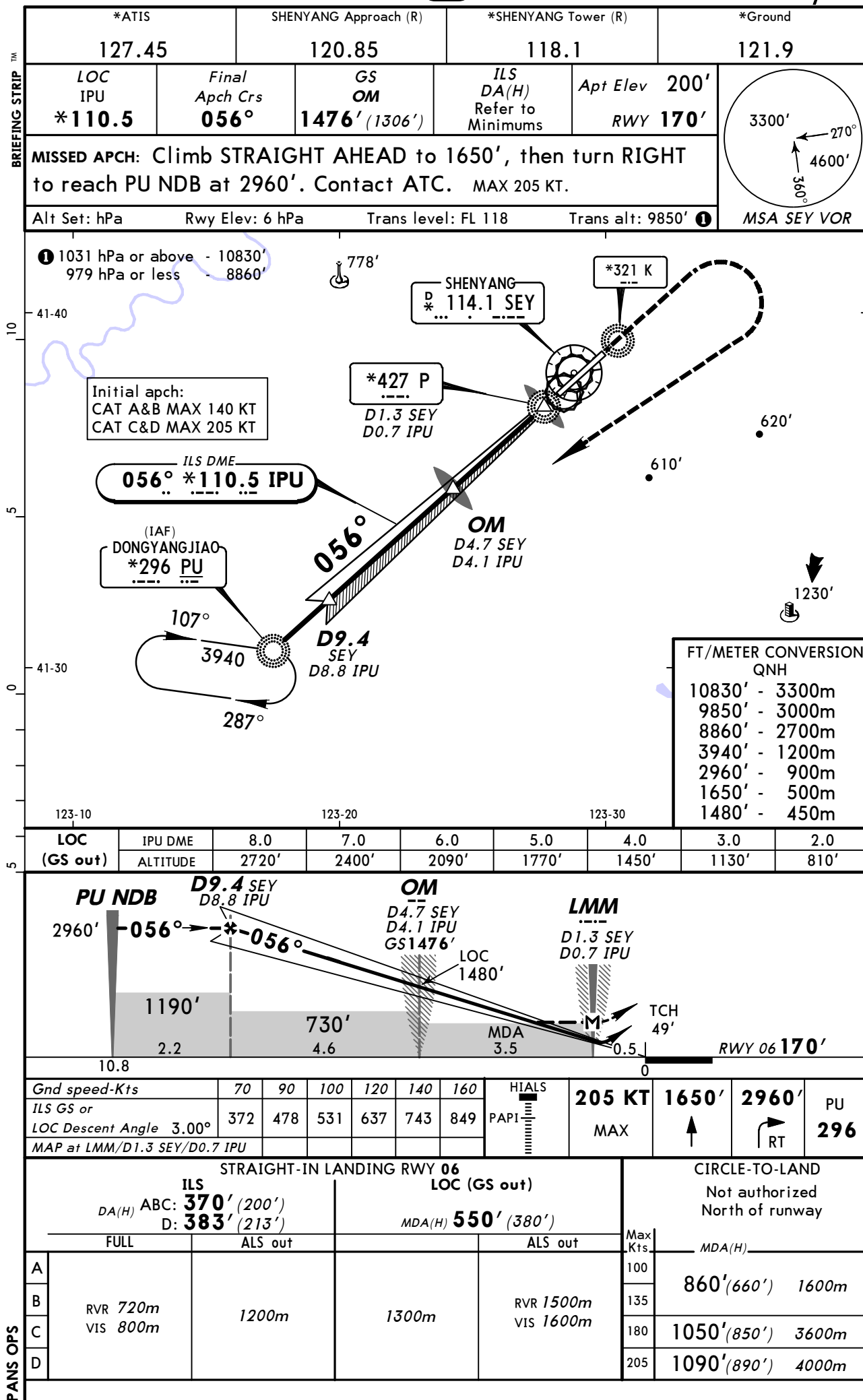
ZYTX/SHE
TAOXIAN

18 APR 14

(11-1)

Eff 1 May

JEPPESSEN SHENYANG, PR OF CHINA
ILS DME Z Rwy 06

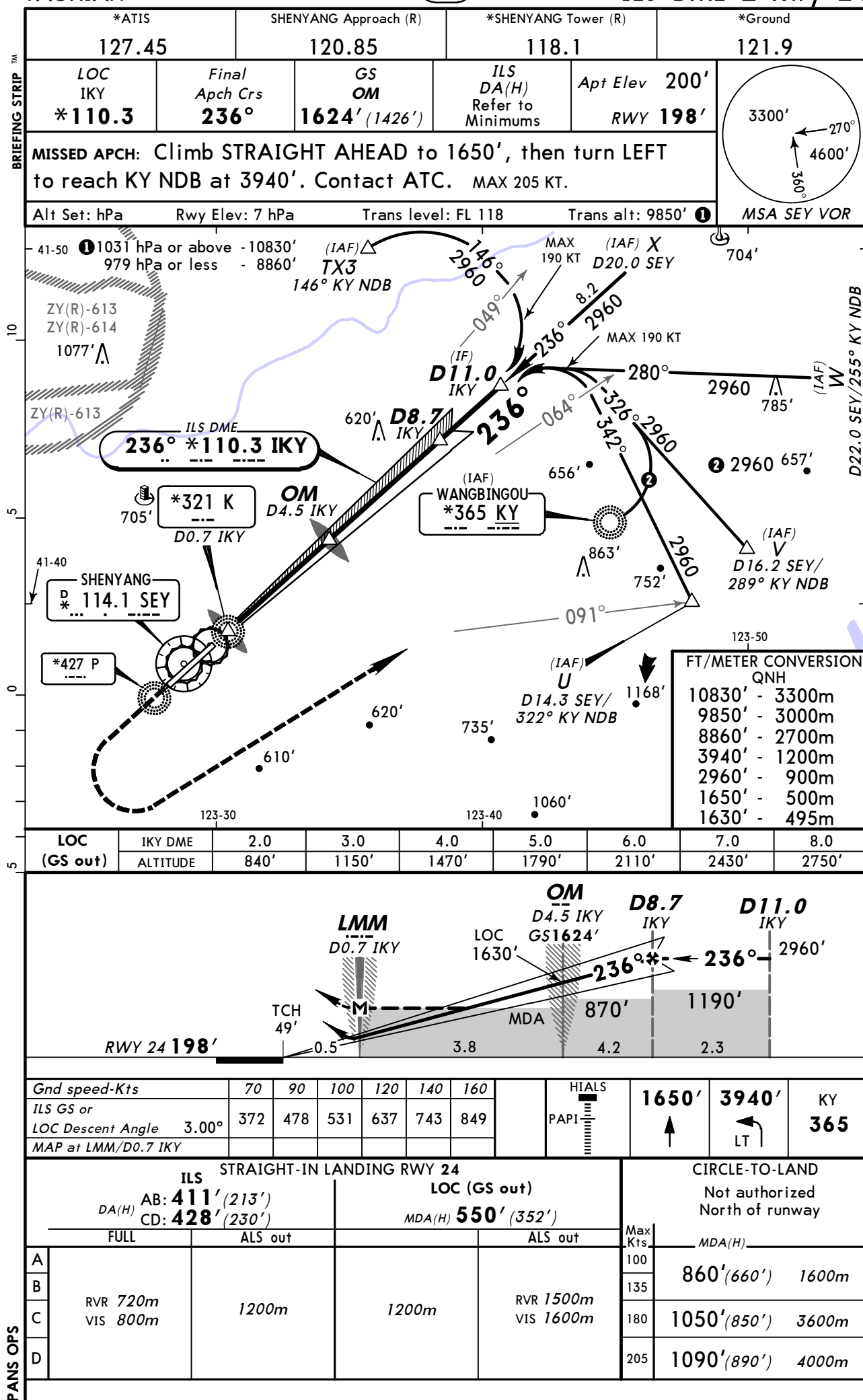


CHANGES: Procedure identifier.

© JEPPESSEN, 2000, 2014. ALL RIGHTS RESERVED.

ZYTX/SHE
TAOXIAN

JEPPESSEN SHENYANG, PR OF CHINA
18 APR 14 **(11-3)** **Eff 1 May** **ILS DME Z Rwy 24**



CHANGES: Procedure identifier. ILS DME added. Procedure.

© JEPPESSEN, 2000, 2014. ALL RIGHTS RESERVED.

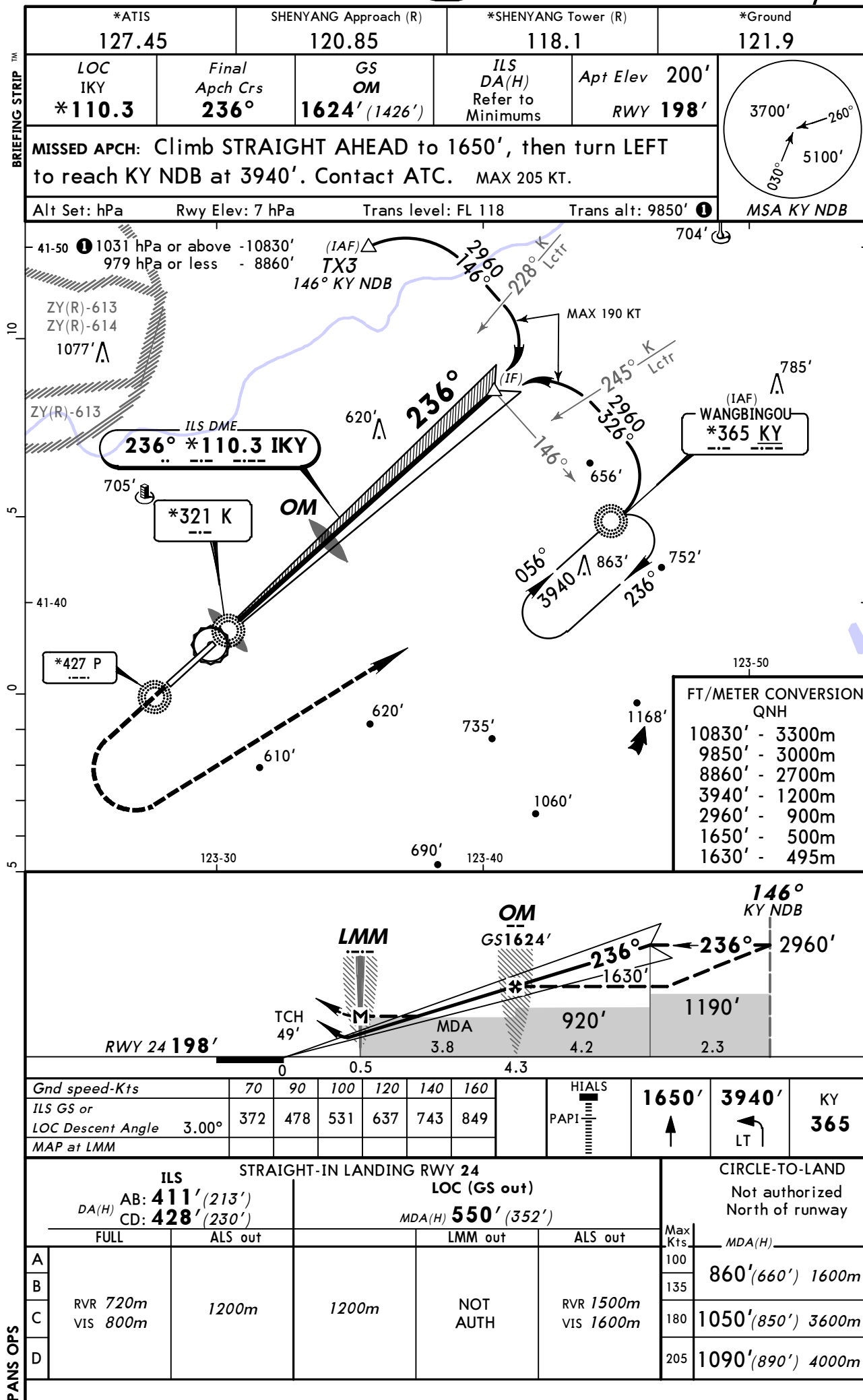
ZYTX/SHE
TAOXIAN

18 APR 14

11-4

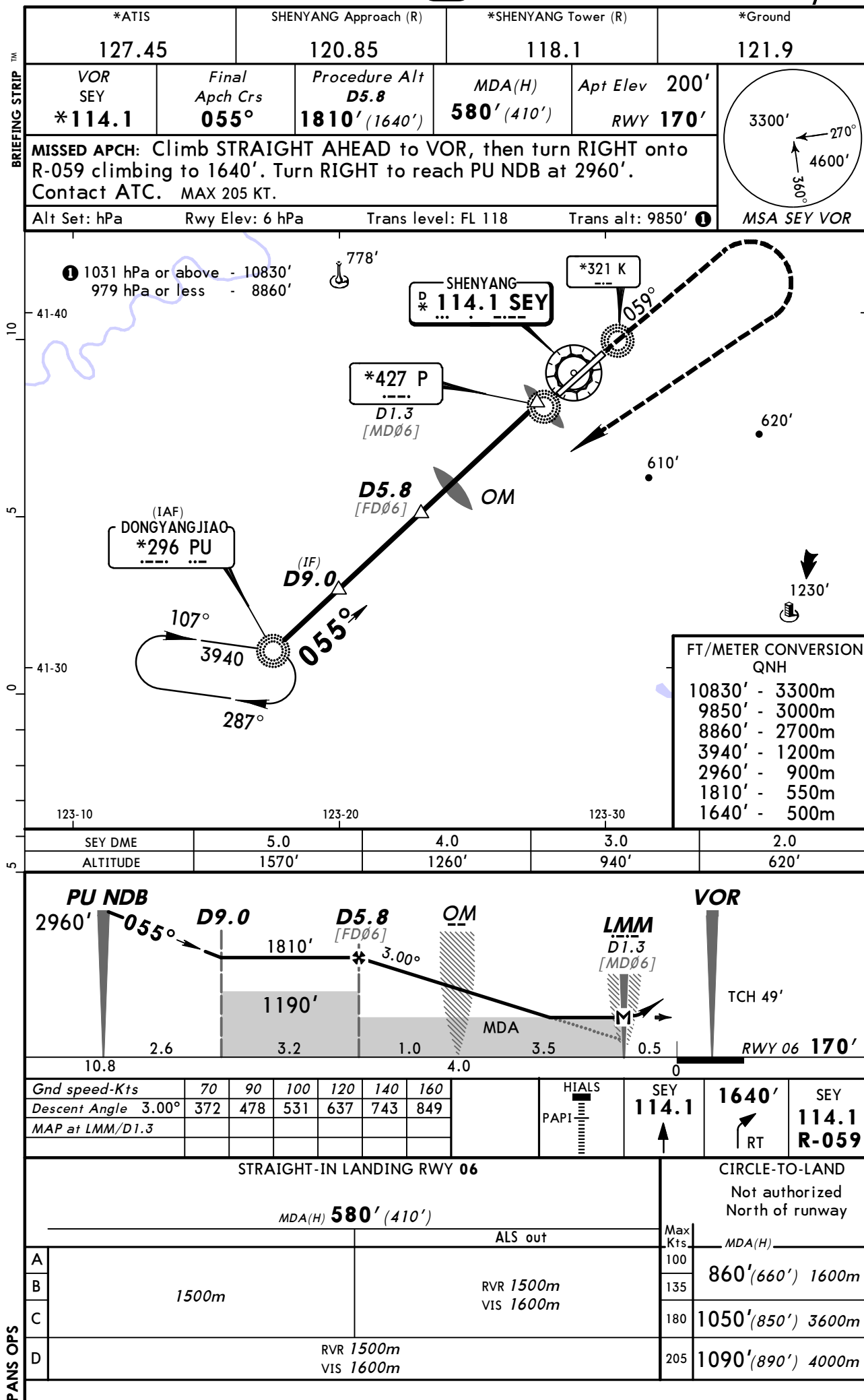
Eff 1 May

JEPPESSEN SHENYANG, PR OF CHINA
ILS Y Rwy 24



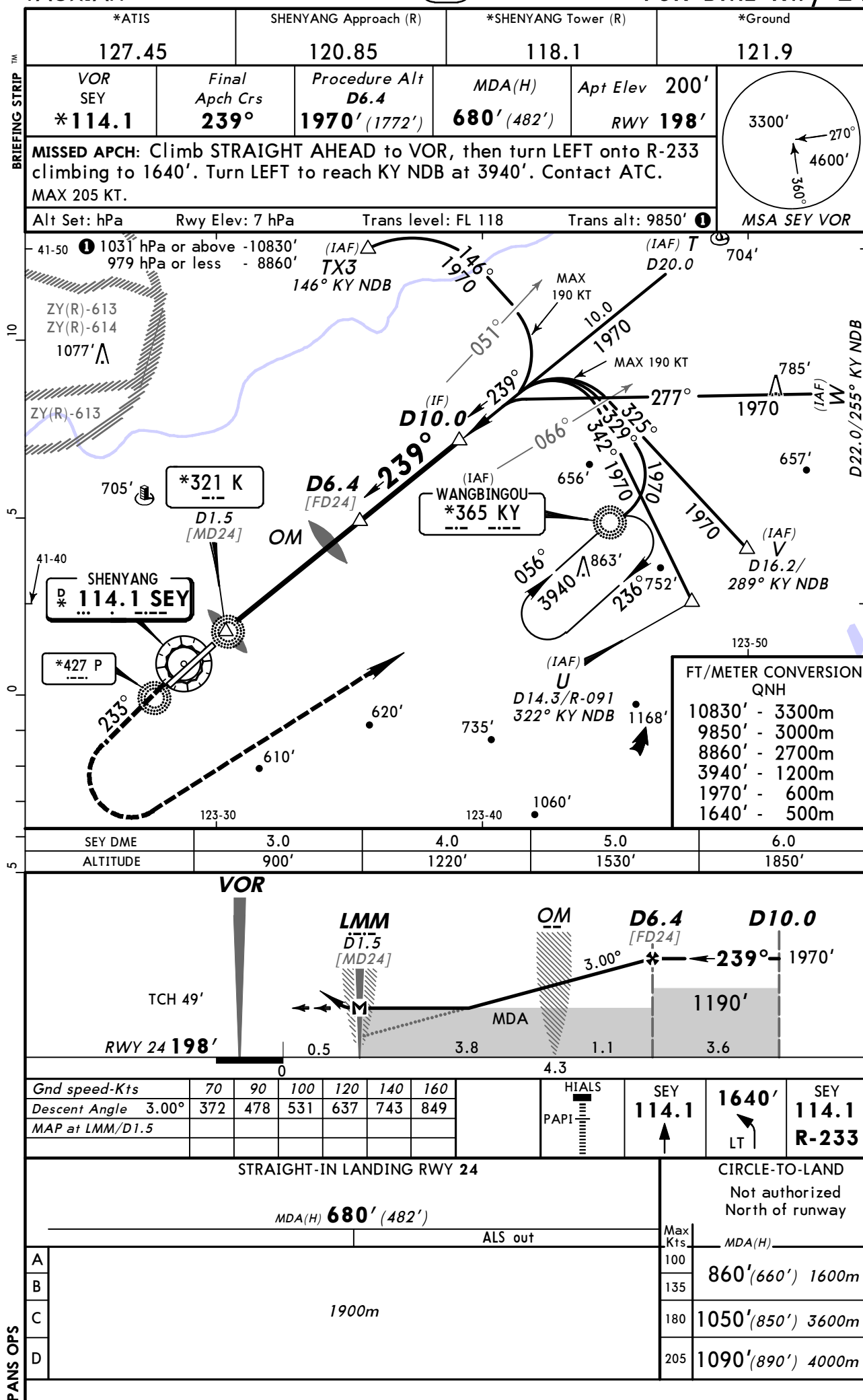
ZYTX/SHE
TAOXIAN

JEPPESSEN SHENYANG, PR OF CHINA
11 OCT 13 (13-1) Eff 17 Oct VOR DME Rwy 06



ZYTX/SHE
TAOXIAN

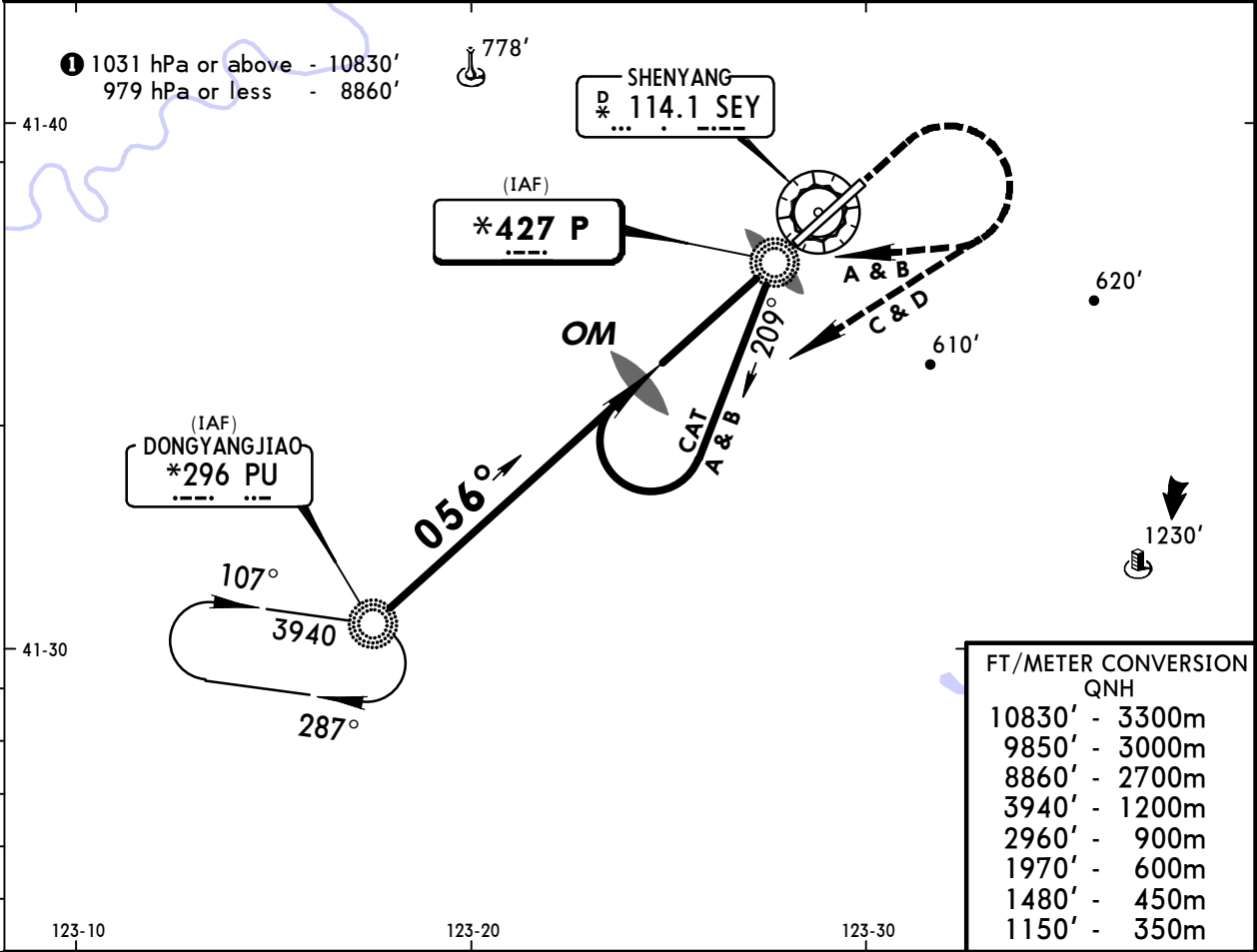
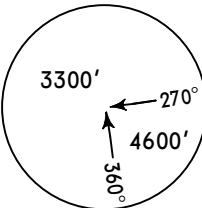
JEPPESSEN SHENYANG, PR OF CHINA
11 OCT 13 **(13-2)** **Eff 17 Oct** **VOR DME Rwy 24**



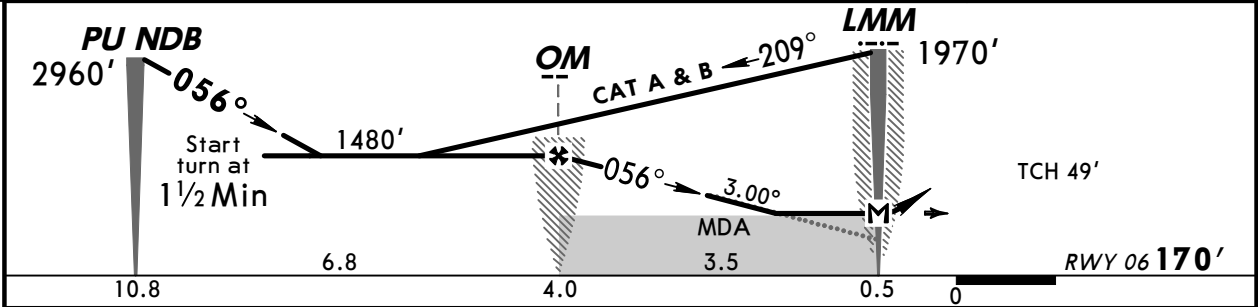
ZYTX/SHE
TAOXIAN

JEPPESSEN SHENYANG, PR OF CHINA
11 OCT 13 **(16-1)** **Eff 17 Oct**
NDB Rwy 06

*ATIS	SHENYANG Approach (R)		*SHENYANG Tower (R)	*Ground
127.45	120.85		118.1	121.9
Lctr P *427	Final Apch Crs 056°	Procedure Alt OM 1480' (1310')	MDA(H) 580' (410')	Apt Elev 200' RWY 170'
MISSED APCH: Climb STRAIGHT AHEAD to 1150', then turn RIGHT to reach CAT A & B: P Lctr at 1970' CAT C & D: PU NDB at 2960'. Contact ATC. MAX 205 KT.				
Alt Set: hPa	Rwy Elev: 6 hPa	Trans level: FL 118	Trans alt: 9850' ①	MSA PU NDB



FT/METER CONVERSION	
QNH	
10830'	3300m
9850'	3000m
8860'	2700m
3940'	1200m
2960'	900m
1970'	600m
1480'	450m
1150'	350m



Gnd speed-Kts	70	90	100	120	140	160	HIALS PAPI 1150'
Descent Angle	3.00°	372	478	531	637	743	
MAP at LMM							

STRAIGHT-IN LANDING RWY 06				CIRCLE-TO-LAND	
MDA(H) 580' (410')				Not authorized North of runway	
ALS out				Max Kts	
1500m				100	860' (660') 1600m
				135	
				180	1050' (850') 3600m
				205	1090' (890') 4000m
RVR 1500m VIS 1600m					

CHANGES: Minimums.

© JEPPESSEN, 2000, 2013. ALL RIGHTS RESERVED.

ZYTX/SHE
TAOXIAN

JEPPESSEN SHENYANG, PR OF CHINA
11 OCT 13 **16-2** **Eff 17 Oct**
NDB Rwy 24

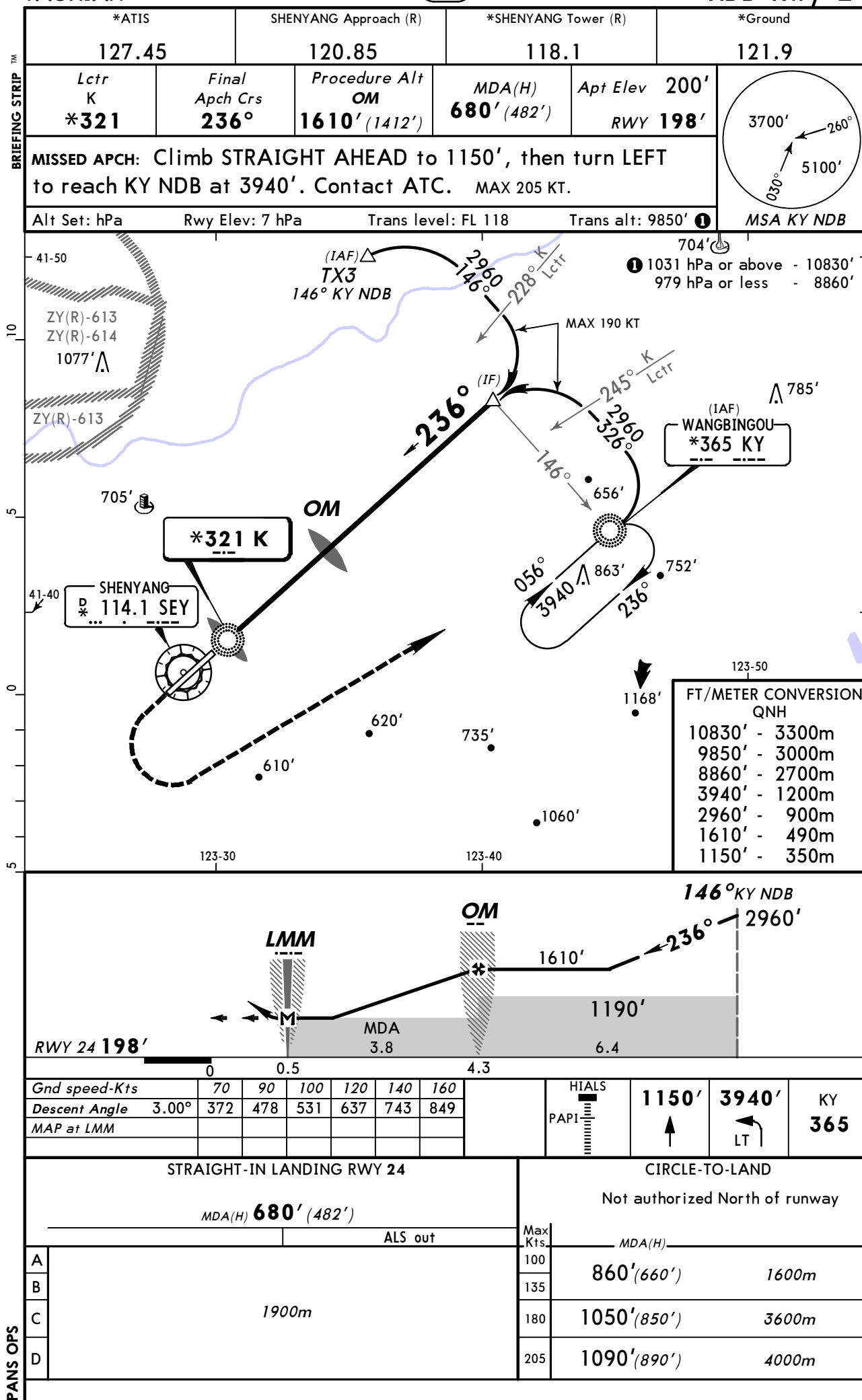


Chart changes since cycle 18-2016

ADD = added chart, REV = revised chart, DEL = deleted chart.

ACT	PROCEDURE IDENT	INDEX	REV DATE	EFF DATE
SHENYANG, (TAOXIAN - ZYTX)				

TERMINAL CHART CHANGE NOTICES

No Chart Change Notices for Airport ZYTX

Chart Change Notices for Country CHN

Type: Gen Tmnl

Effectivity: Permanent

Begin Date: 20150429

End Date: No end date

At the following airports disregard the note "QNH on req" as QFE is avbl only: ZGNN, ZSQZ, ZSWX, ZYJM, ZYMD, ZYQQ and ZYYJ.