

## List of pages in this Trip Kit

Trip Kit Index

Airport Information For ZYTL

Terminal Charts For ZYTL

Revision Letter For Cycle 19-2016

Change Notices

Notebook

## General Information

Location: DALIAN CHN  
ICAO/IATA: ZYTL / DLC  
Lat/Long: N38°58.0', E121°32.4'  
Elevation: 108 ft

Airport Use: Public  
Daylight Savings: Not Observed  
UTC Conversion: -8:00 = UTC  
Magnetic Variation: 7.0°W

Fuel Types: Jet A  
Customs: Yes  
Airport Type: IFR  
Landing Fee: Yes  
Control Tower: Yes  
Jet Start Unit: No  
LLWS Alert: No  
Beacon: No

Sunrise: 2224 Z  
Sunset: 0851 Z

## Runway Information

Runway: 10  
Length x Width: 10827 ft x 148 ft  
Surface Type: concrete  
TDZ-Elev: 104 ft  
Lighting: Edge, ALS, Centerline  
Displaced Threshold: 656 ft  
Stopway: 164 ft

Runway: 28  
Length x Width: 10827 ft x 148 ft  
Surface Type: concrete  
TDZ-Elev: 90 ft  
Lighting: Edge, ALS, Centerline  
Displaced Threshold: 328 ft  
Stopway: 164 ft

## Communication Information

ATIS: 126.650

ATIS: 131.450

Dalian Tower: 118.250

Dalian Tower: 118.850 Secondary

Dalian Ground: 121.650

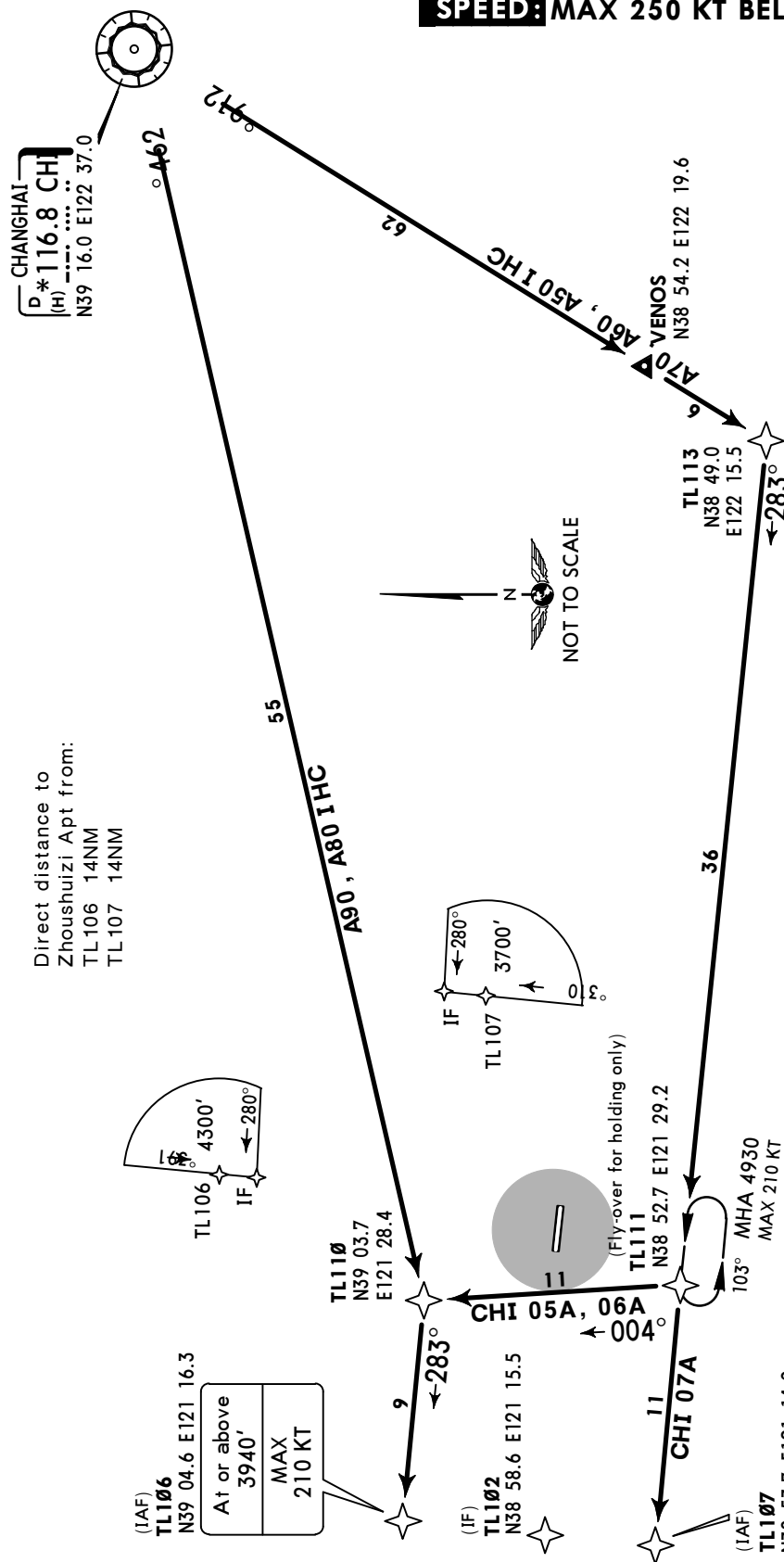
Dalian Approach: 123.850

Dalian Approach: 127.950 Secondary

Dalian Approach: 119.600

Trans alt: 9850'  
10830' 1031 hPa or above  
8860' 979 hPa or below

**SPEED: MAX 250 KT BELOW 9850'**



STAR	ROUTING	FL CONVERSION
CHI 05A	CHI - VENOS - TL113 - TL111 - TL110 - TL106 (3940'+; K210-).	FL118 FL3600m
CHI 06A BY ATC		
CHI 07A	CHI - VENOS - TL113 - TL111 - TL107 (CAT D: 4930'+; K210-/ CAT A, B & C: 3940'+; K210-).	FT/METER CONVERSION QNH 10830' - 3300m 9850' - 3000m 8860' - 2700m 4930' - 1500m 3940' - 1200m
CHI 08A BY ATC	CHI - TL110 - TL106 (3940'+; K210-).	
CHI 09A BY ATC		

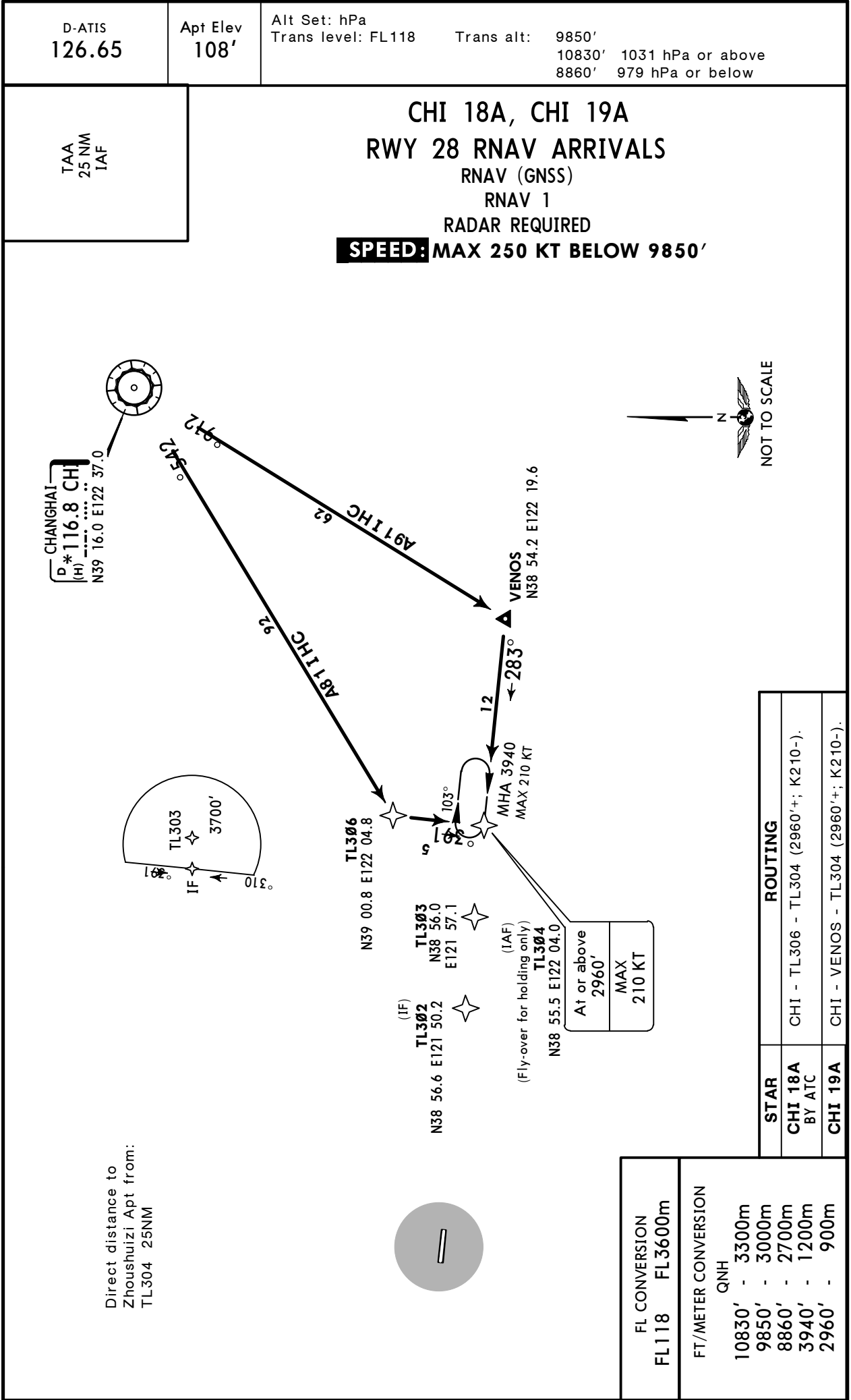
CAT D
A† or above 4930'
MAX 210 KT

CAT A, B & C
A† or above 3940'
MAX 210 KT

© JEPPESEN, 2015. ALL RIGHTS RESERVED.

ZYTL/DLC  
ZHOUSHUIZI

JEPPESSEN DALIAN, PR OF CHINA  
24 APR 15 10-2A Eff 29 Apr 1600Z RNAV STAR



ZYTL/DLC  
ZHOUSHUIZI

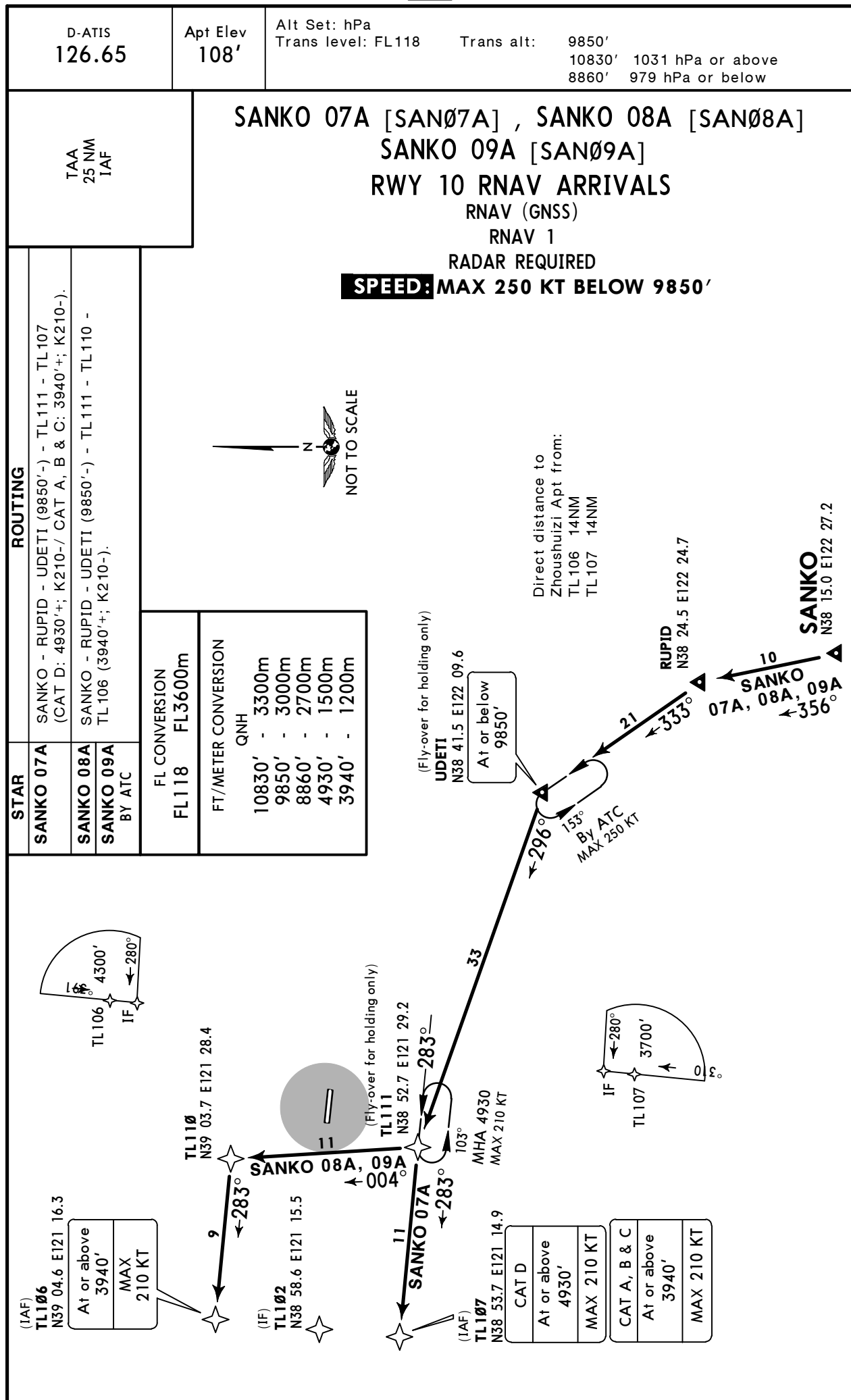
24 APR 15

10-2B

Eff 29 Apr 1600Z

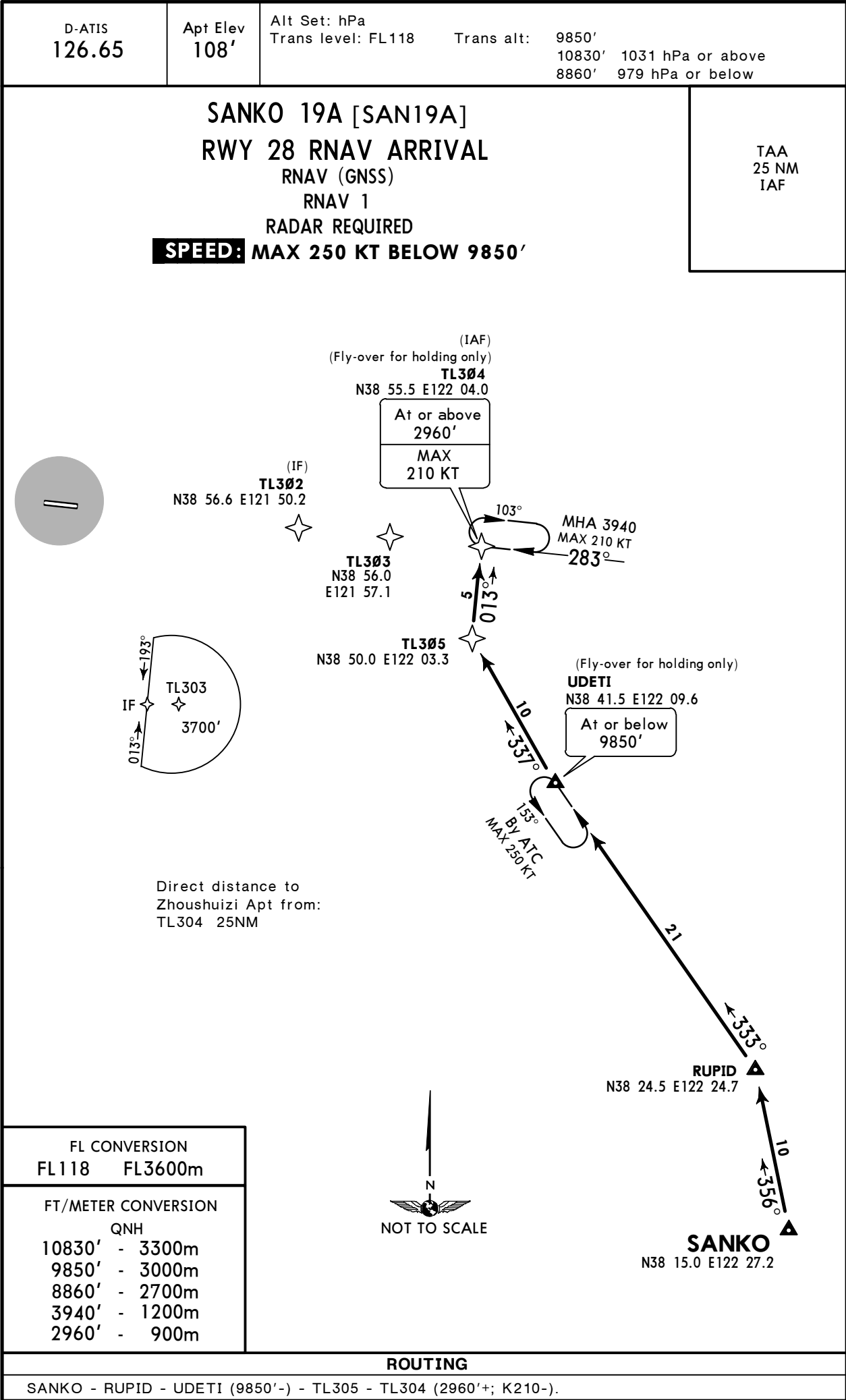
DALIAN, PR OF CHINA

RNAV STAR



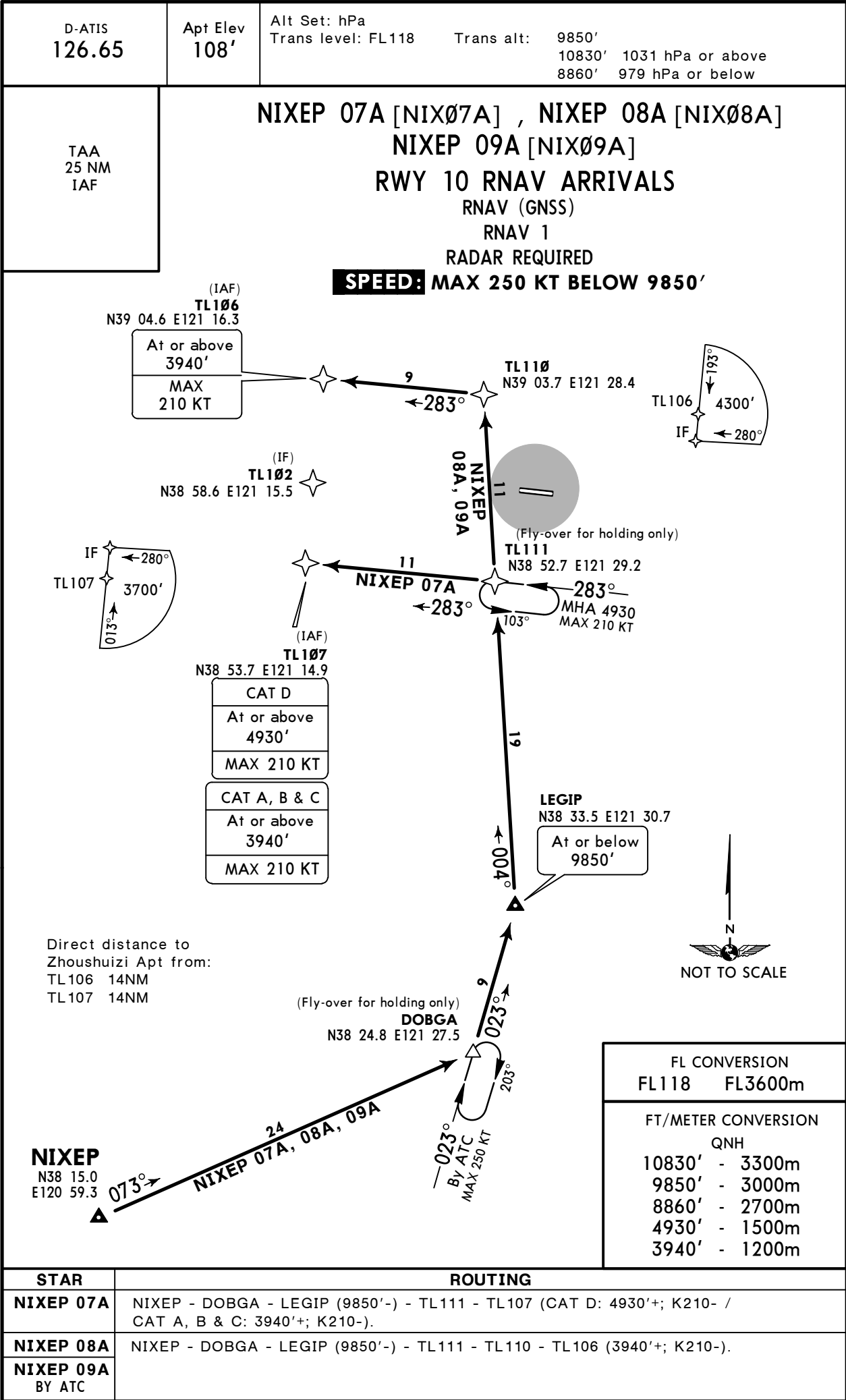
ZYTL/DLC  
ZHOU SHUIZI

JEPPESSEN DALIAN, PR OF CHINA  
24 APR 15 10-2C Eff 29 Apr 1600Z RNAV STAR



ZYTL/DLC  
ZHOU SHUIZI

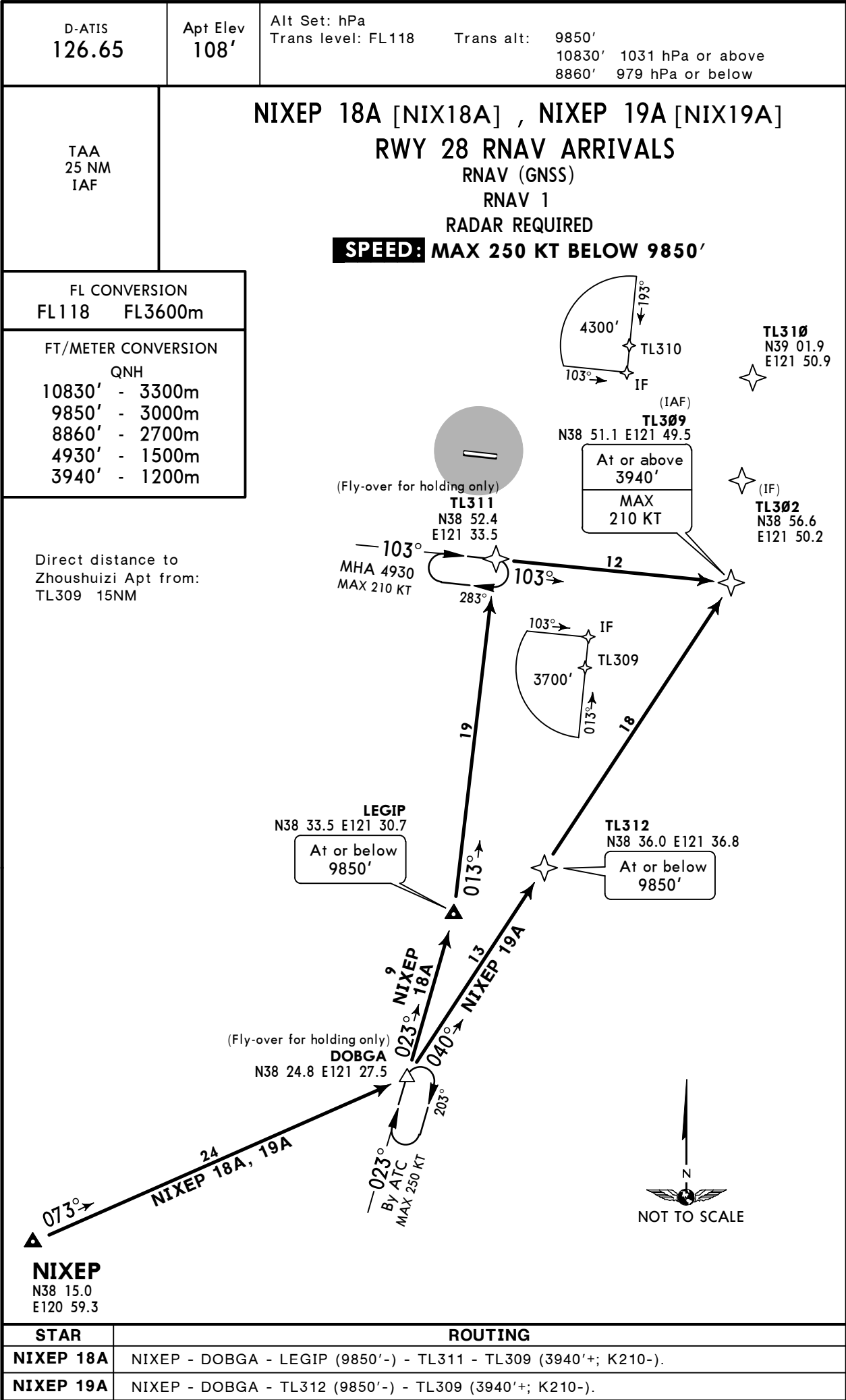
24 APR 15 **10-2D** **Eff 29 Apr 1600Z** **RNAV STAR**





ZYTL/DLC  
ZHOSHUIZI

JEPPESSEN DALIAN, PR OF CHINA  
24 APR 15 10-2E Eff 29 Apr 1600Z RNAV STAR



STAR	ROUTING
NIXEP 18A	NIXEP - DOBGA - LEGIP (9850'-) - TL311 - TL309 (3940'+; K210-).
NIXEP 19A	NIXEP - DOBGA - TL312 (9850'-) - TL309 (3940'+; K210-).

ZYTL/DLC  
ZHOU SHUIZI

**JEPPESSEN** DALIAN, PR OF CHINA  
24 APR 15 **10-2F** Eff 29 Apr 1600Z **RNAV STAR**

D-ATIS  
126.65

Apt Elev  
108'

Alt Set: hPa  
Trans level: FL118 Trans alt: 9850'  
10830' 1031 hPa or above  
8860' 979 hPa or below

TAA  
25 NM  
IAF

**ANRAT 07A [ANR07A] , ANRAT 08A [ANR08A]  
ANRAT 09A [ANR09A]**

**RWY 10 RNAV ARRIVALS**

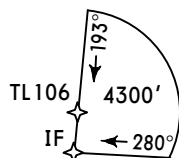
RNAV (GNSS)

RNAV 1

RADAR REQUIRED

**SPEED: MAX 250 KT BELOW 9850'**

Direct distance to  
Zhoushuizi Apt from:  
TL106 14NM  
TL107 14NM



FL CONVERSION  
FL118 FL3600m

FT/METER CONVERSION  
QNH  
10830' - 3300m  
9850' - 3000m  
8860' - 2700m  
4930' - 1500m  
3940' - 1200m

(IAF)  
TL106  
N39 04.6 E121 16.3

At or above  
3940'  
MAX  
210 KT

(IF)  
TL102  
N38 58.6 E121 15.5

(IAF)  
TL107  
N38 53.7 E121 14.9

CAT D  
At or above  
4930'  
MAX 210 KT

CAT A, B & C  
At or above  
3940'  
MAX 210 KT

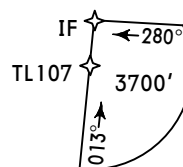
TL110  
N39 03.7  
E121 28.4

ANRAT  
08A, 09A

ANRAT 07A  
←283°

(Fly-over for holding only)  
TL111  
N38 52.7 E121 29.2

MHA 4930  
MAX 210 KT



**ANRAT**  
N38 39.5 E119 57.4

LOTGO  
N38 32.0 E120 09.5

INTIV  
N38 28.5 E120 31.2

ANRAT  
07A, 08A, 09A

TANIB  
N38 22.9 E121 05.2

At or above  
FL118  
or by ATC

LEGIP  
N38 33.5 E121 30.7

At or below  
9850'



**STAR**

**ROUTING**

**ANRAT 07A** ANRAT - LOTGO - INTIV - TANIB (FL118+ or by ATC) - LEGIP (9850'-) - TL111 - TL107 (CAT D: 4930'+; K210-/ CAT A, B & C: 3940'+; K210-).

**ANRAT 08A** ANRAT - LOTGO - INTIV - TANIB (FL118+ or by ATC) - LEGIP (9850'-) - TL111 - TL110 - TL106 (3940'+; K210-).

**ANRAT 09A**  
BY ATC

ZYTL/DLC  
ZHOUSHUIZI

24 APR 15

10-2G

Eff 29 Apr 1600Z

RNAV STAR

D-ATIS  
126.65

Apt Elev  
108'

Alt Set: hPa  
Trans level: FL118  
Trans alt: 9850'  
10830' 1031 hPa or above  
8860' 979 hPa or below

TAA  
25 NM  
IAF

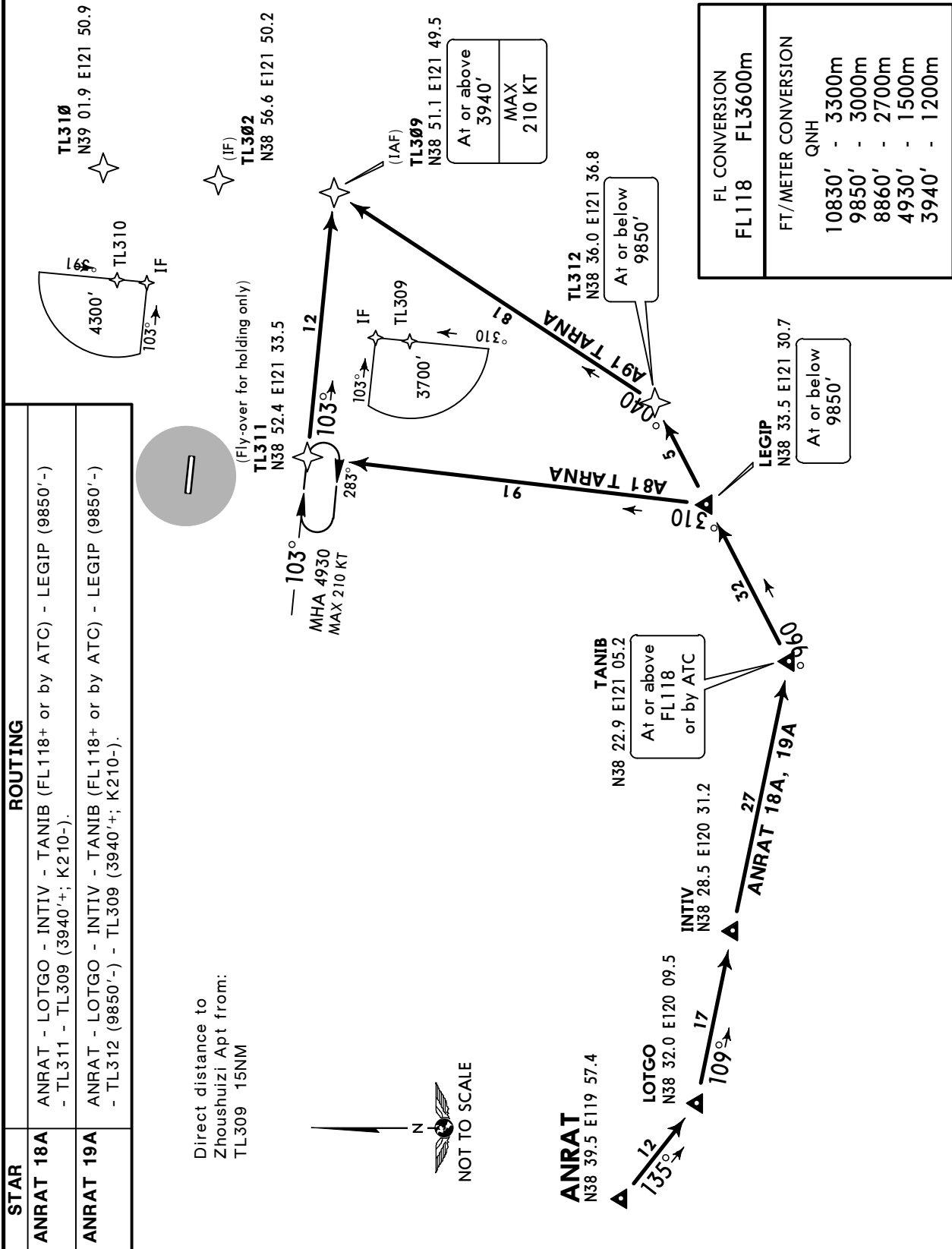
# ANRAT 18A [ANR18A] , ANRAT 19A [ANR19A] RWY 28 RNAV ARRIVALS

RNAV (GNSS)

RNAV 1

RADAR REQUIRED

**SPEED: MAX 250 KT BELOW 9850'**



ZYTL/DLC  
ZHOSHUIZI

**JEPPESSEN**  
24 APR 15 10-2H Eff

**DALIAN, PR OF CHINA**

**Eff 29 Apr 1600Z****RNAV STAR**

D-ATIS  
126.65

Apt Elev  
108'

Alt Set: hPa

Trans level: FL118

Trans alt: 9850'

10830' 1031 hPa or above

8860' 979 hPa or below

TAA  
25 NM  
IAF

UNSEK 09A [UNSØ9A]  
RWY 10 RNAV ARRIVAL  
BY ATC  
RNAV (GNSS)  
RNAV 1

## RADAR REQUIRED

**SPEED: MAX 250 KT BELOW 9850'**

(IF)  
TL102  
N38 58.6 E121 15.5

Direct distance to  
Zhoushuizi Apt from:  
TTL103 19NM

NOT TO SCALE

(IAF)  
TL103  
N38 58.8 E121 08.6

At or above 2960'	MAX 210 KT
----------------------	---------------

4

UNSEK

N38 36.8 E120 14.1

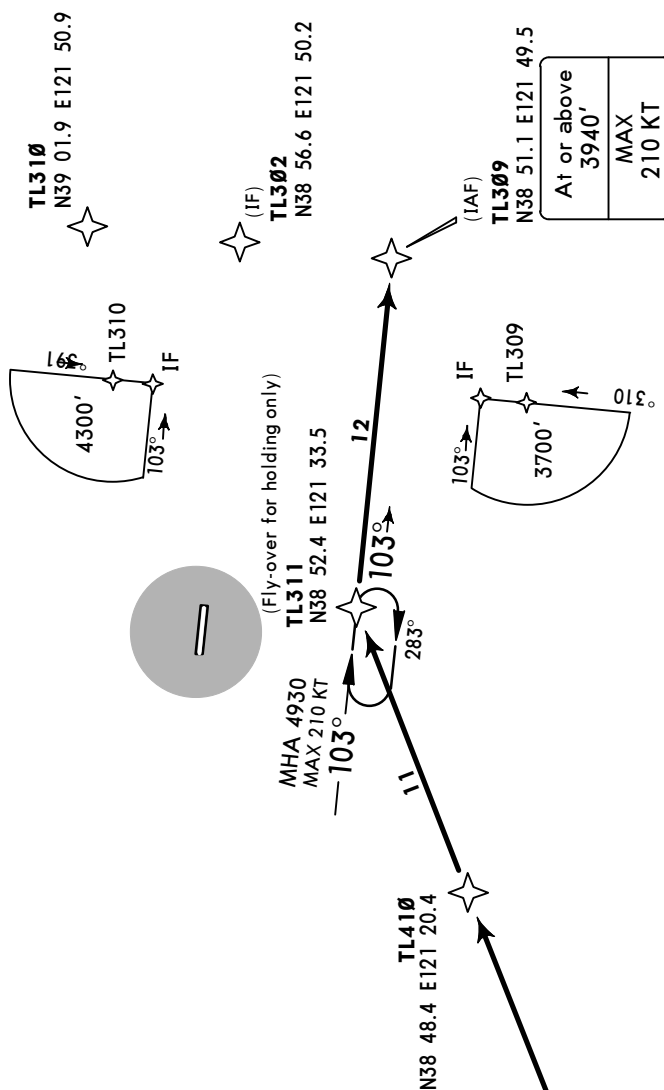
## ROUTING

UNSEK - TL103 (2960'+; K210-).

Trans alt: 9850'  
10830' 1031 hPa or above  
8860' 979 hPa or below

BY ATC  
RNAV (GNSS)  
RNAV 1

**SPEED: MAX 250 KT BELOW 9850'**



10830'	-	3300m
9850'	-	3000m
8860'	-	2700m
4930'	-	1500m
3940'	-	1200m

Direct distance to  
Zhoushuizi Apt from:  
TTL309 15NM

TL41Ø  
N38 48.4 E121 20.4

**ALARA**  
N38 33.7 E120 33.1

## ROUTING

ALARA - TL410 - TL311 - TL309 (3940'+: K210-).

ZYTL/DLC  
ZHOSHUIZI

**JEPPESEN** DALIAN, PR OF CHINA  
24 APR 15 (10-2K) Eff 29 Apr 1600Z **STAR**

D-ATIS 126.65	Apt Elev 108'	Alt Set: hPa Trans level: FL118	Trans alt: 9850' 10830' 1031 hPa or above 8860' 979 hPa or below
------------------	------------------	------------------------------------	---

CHI Ø1A, CHI Ø2A  
SANKO Ø1A [SANØ1A], SANKO Ø2A [SANØ2A]  
RWY 10 ARRIVALS

**DALIAN (IAF)**  
D \*115.4 DBL (H) N38 57.7 E121 34.2  
At or above 3940'

**CHANGHAI**  
D \*116.8 CHI (H) N39 16.0 E122 37.0

**FUJIAZHANG (IAF)**  
\*213 FC N38 52.1 E121 37.7  
At or above 3940'

**SANKO Ø1A, Ø2A**  
N38 15.0 E122 27.2

**Waypoints and Bearings:**  
 - OGIPO N38 51.1 E121 49.5  
 - UDETI N38 41.5 E122 09.6  
 - RUPID N38 24.5 E122 24.7  
 - SANKO Ø1A, Ø2A N38 24.5 E122 24.7  
 - SANKO Ø1A, Ø2A N38 15.0 E122 27.2

**Distances and Bearings:**  
 - DALIAN to OGIPO: 13, 307°  
 - CHANGHAI to OGIPO: 12, 62°  
 - FUJIAZHANG to OGIPO: 9, 103°  
 - OGIPO to UDETI: 18, 309°  
 - UDETI to RUPID: 21, 333°  
 - RUPID to SANKO Ø1A, Ø2A: 10, 356°

FL CONVERSION	
FL118	FL3600m
FT/METER CONVERSION	
QNH	
10830'	- 3300m
9850'	- 3000m
8860'	- 2700m
4930'	- 1500m
3940'	- 1200m

ZYTL/DLC  
ZHOUSHUIZI

24 APR 15  
10-2L

Eff 29 Apr 1600Z

DALIAN, PR OF CHINA

STAR

D-ATIS  
126.65

Apt Elev  
108'

Alt Set: hPa

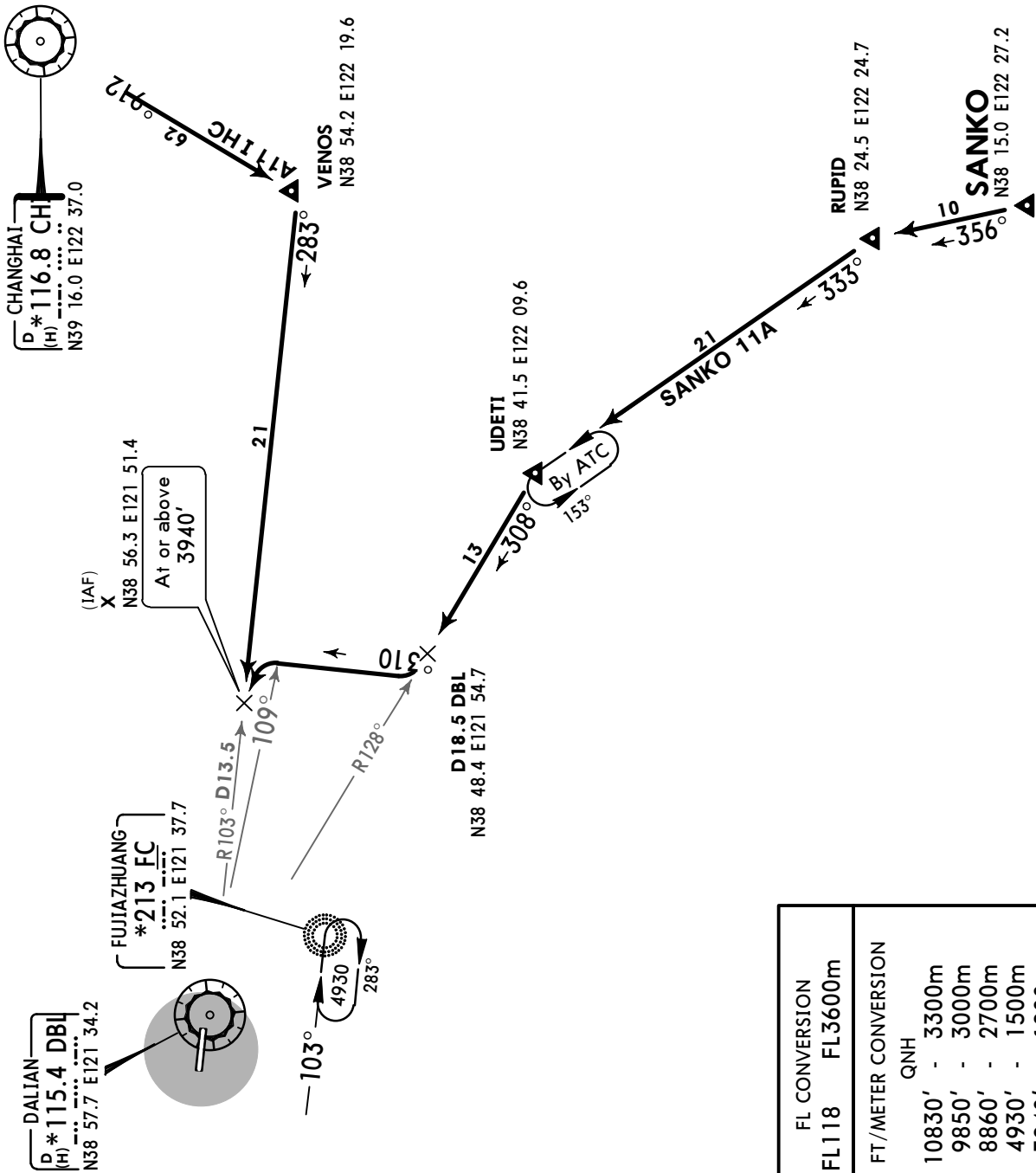
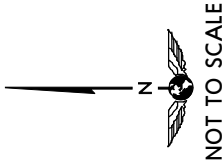
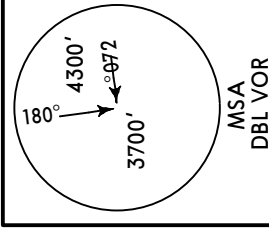
Trans level: FL118

Trans alt: 9850'

10830' 1031 hPa or above

8860' 979 hPa or below

CHI 11A, SANKO 11A [SAN11A]  
RWY 28 ARRIVALS



FL CONVERSION	
FL118	FL3600m
FT/METER CONVERSION	
QNH	
10830'	- 3300m
9850'	- 3000m
8860'	- 2700m
4930'	- 1500m
3940'	- 1200m

ZYTL/DLC  
ZHOU SHUIZI

24 APR 15  
10-2M

Eff 29 Apr 1600Z

DALIAN, PR OF CHINA

STAR

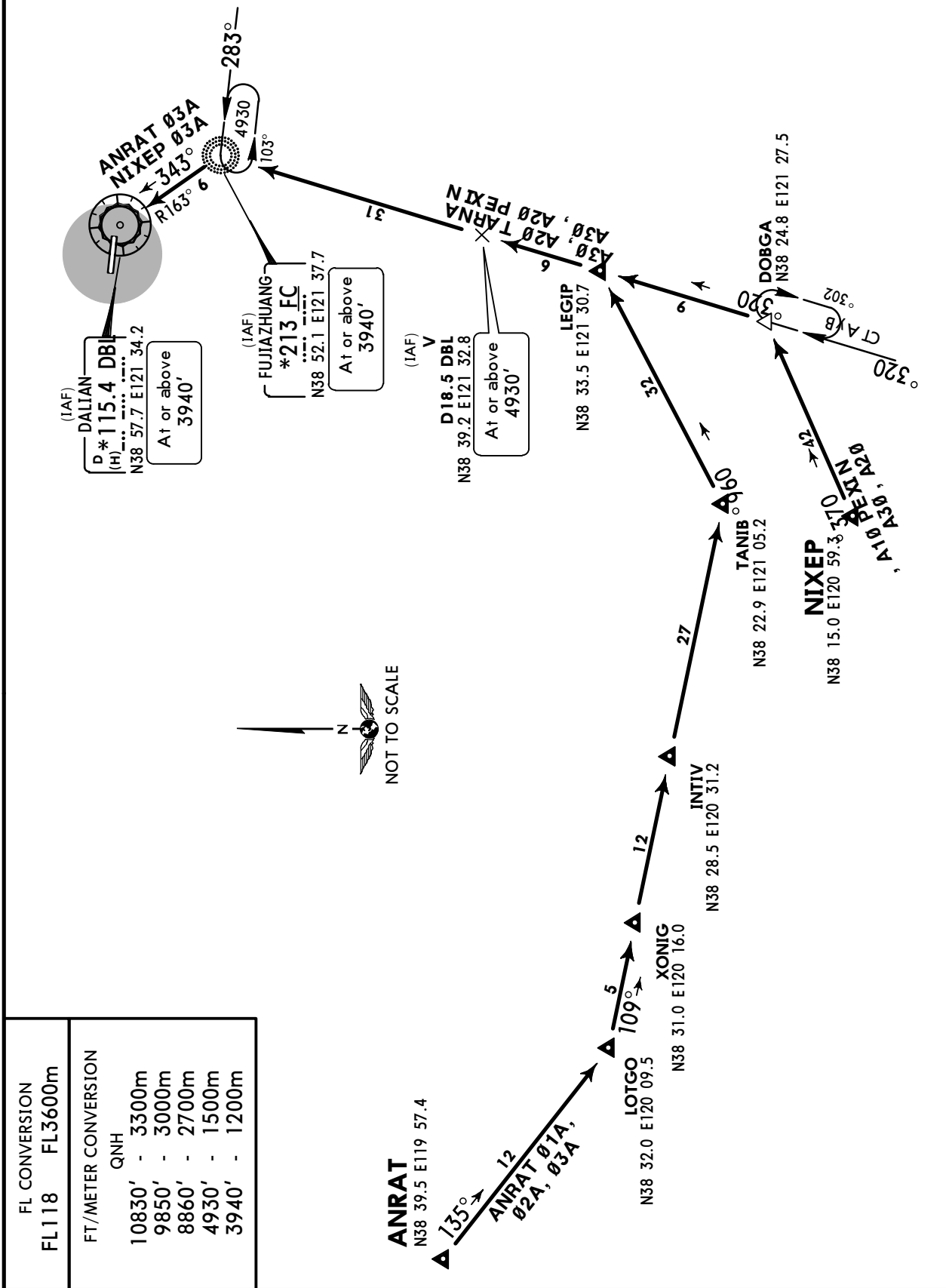
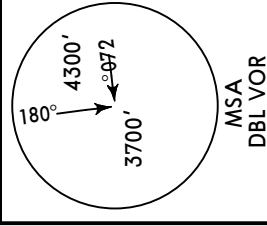
D-ATIS  
126.65

Apt Elev  
108'

Alt Set: hPa  
Trans level: FL118

Trans alt: 9850'  
10830' 1031 hPa or above  
8860' 979 hPa or below

ANRAT 01A [ANR01A], ANRAT 02A [ANR02A]  
ANRAT 03A [ANR03A], NIXEP 01A [NIX01A]  
NIXEP 02A [NIX02A], NIXEP 03A [NIX03A]  
RWY 10 ARRIVALS



FL CONVERSION	FL 3600m
FL 118	FL 3600m
FT/METER CONVERSION	QNH
10830'	- 3300m
9850'	- 3000m
8860'	- 2700m
4930'	- 1500m
3940'	- 1200m



ZYTL/DLC  
ZHOSHUIZI

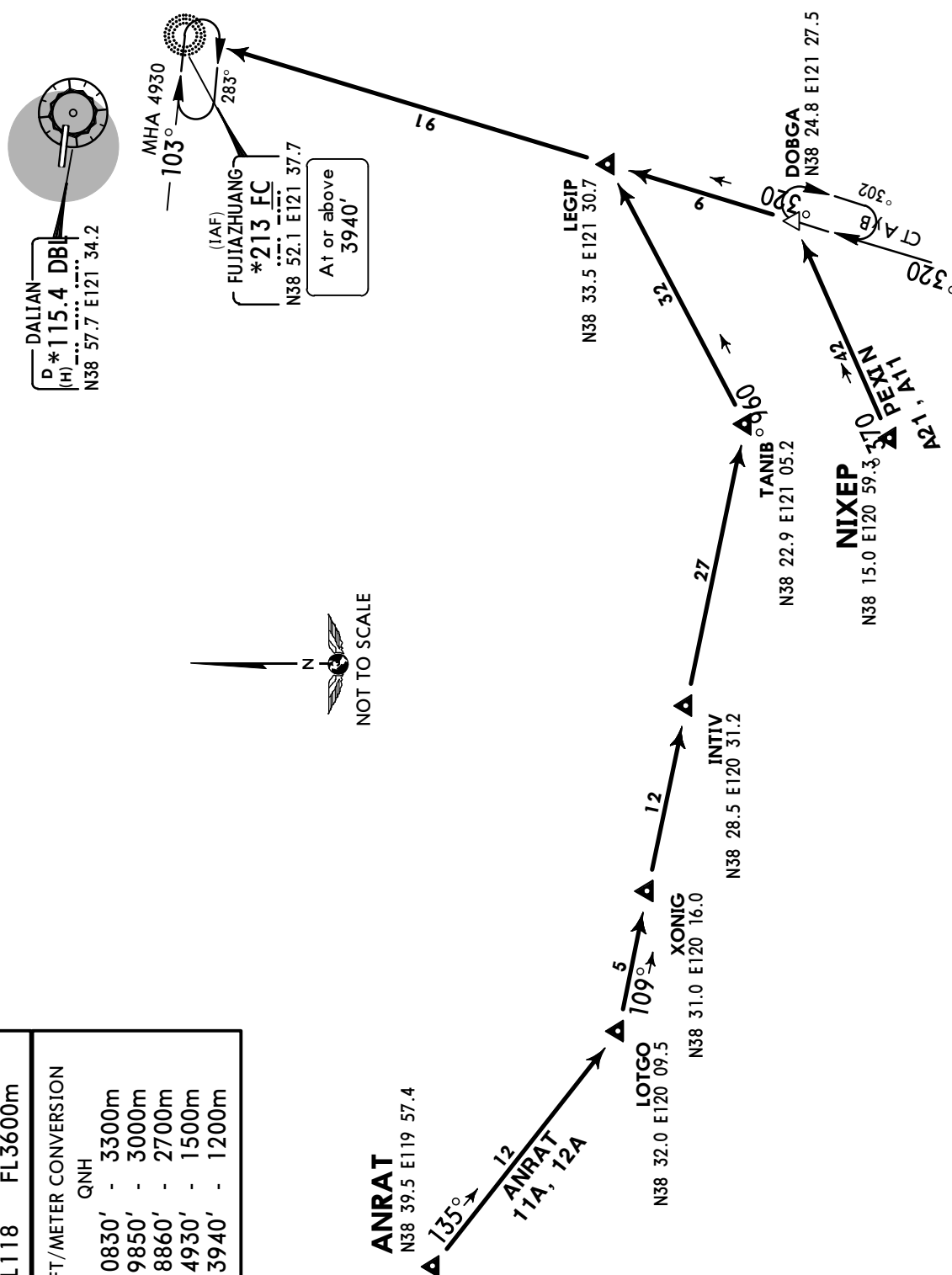
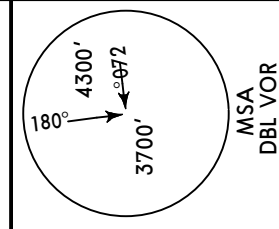
JEPPESSEN DALIAN, PR OF CHINA  
24 APR 15 10-2N Eff 29 Apr 1600Z STAR

D-ATIS  
126.65

Apt Elev  
108'

Alt Set: hPa  
Trans level: FL118 Trans alt: 9850'  
10830' 1031 hPa or above  
8860' 979 hPa or below

ANRAT 11A [ANR11A], ANRAT 12A [ANR12A]  
NIXEP 11A [NIX11A], NIXEP 12A [NIX12A]  
RWY 28 ARRIVALS



FL CONVERSION  
FL118 FL3600m

FT/METER CONVERSION  
QNH  
10830' - 3300m  
9850' - 3000m  
8860' - 2700m  
4930' - 1500m  
3940' - 1200m

ZYTL/DLC  
ZHOUSHUIZI

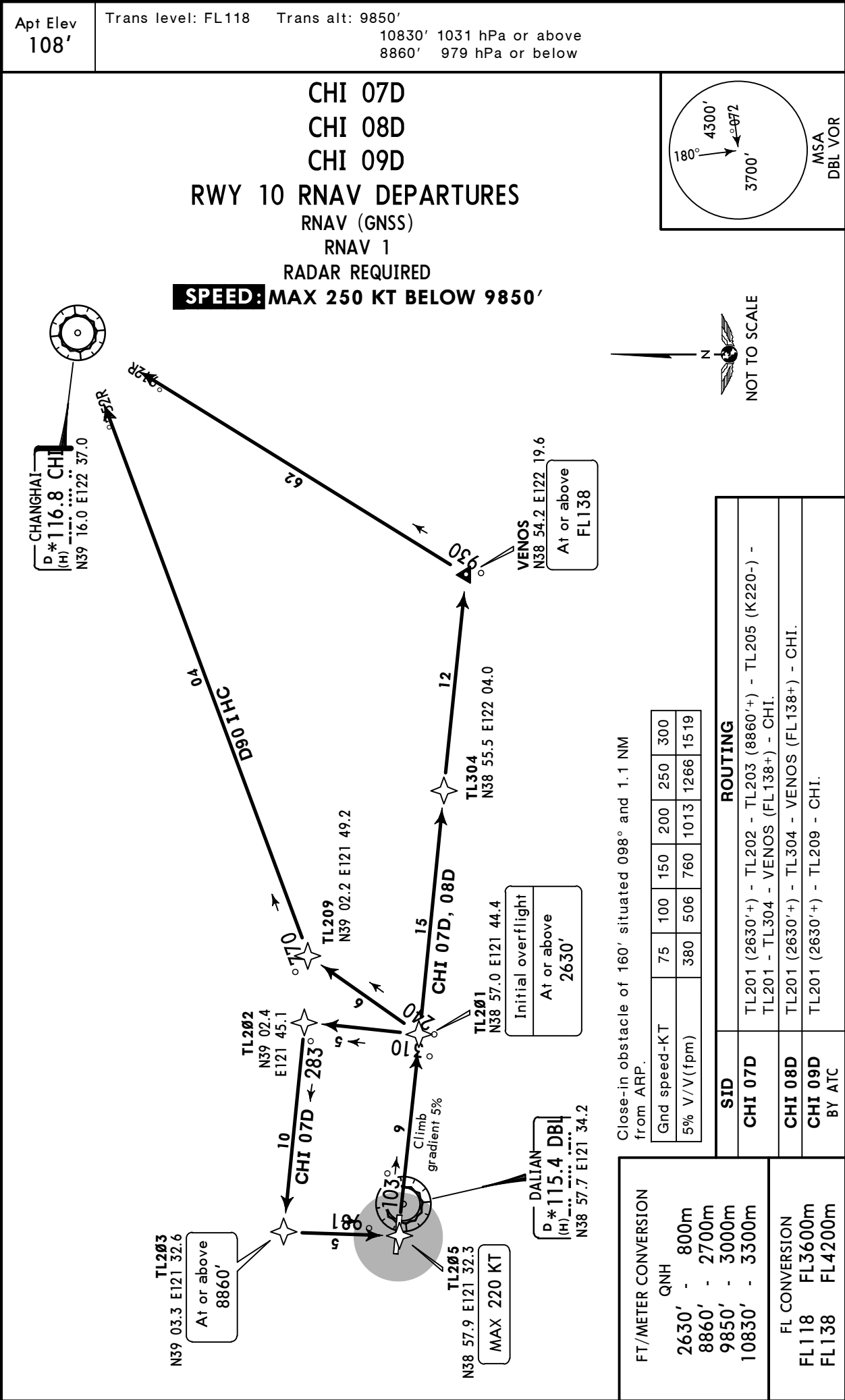
24 APR 15

10-3

Eff 29 Apr 1600Z

DALIAN, PR OF CHINA

RNAV SID





ZYTL/DLC  
ZHOUSHUIZI

24 APR 15

10-3B

Eff 29 Apr 1600Z

DALIAN, PR OF CHINA

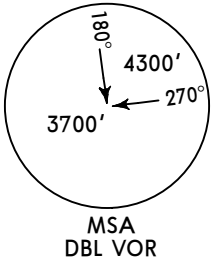
RNAV SID

Apt Elev  
108'

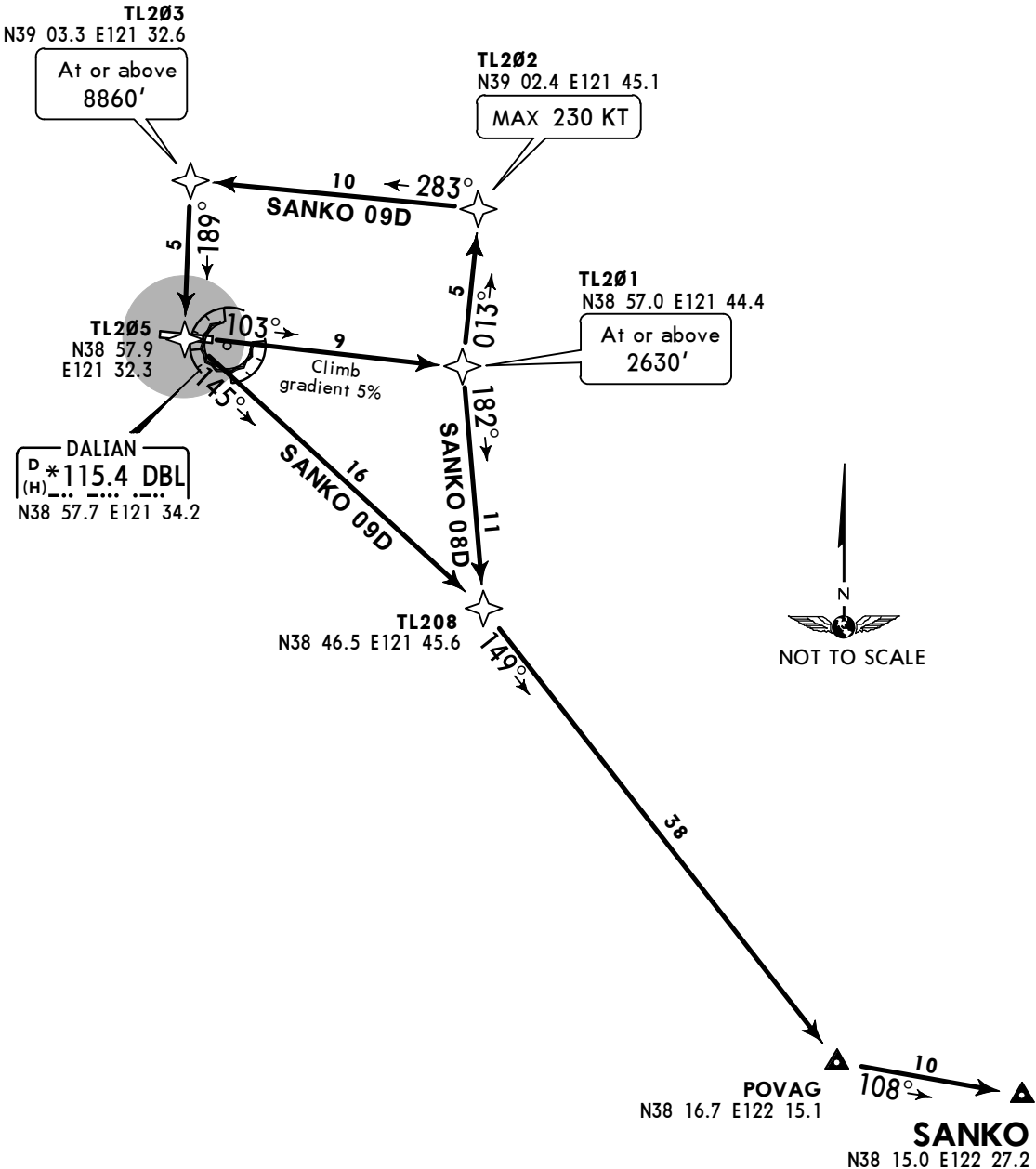
Trans level: FL118

Trans alt: 9850'

10830' 1031 hPa or above  
8860' 979 hPa or below



SANKO 08D [SANØ8D]  
SANKO 09D [SANØ9D]  
RWY 10 RNAV DEPARTURES  
RNAV (GNSS)  
RNAV 1  
RADAR REQUIRED  
**SPEED: MAX 250 KT BELOW 9850'**



FT/METER CONVERSION

QNH	
2630'	800m
8860'	2700m
9850'	3000m
10830'	3300m

FL CONVERSION  
FL118 FL3600m

Close-in obstacle of 160' situated 098° and 1.1 NM from ARP.

Gnd speed-KT	75	100	150	200	250	300
5% V/V(fpm)	380	506	760	1013	1266	1519

SID	ROUTING
SANKO 08D	TL201 (2630'+) - TL208 - POVAG - SANKO.
SANKO 09D	TL201 (2630'+) - TL202 (K230-) - TL203 (8860'+) - TL205 - TL208 - POVAG.

ZYTL/DLC  
ZHOU SHUIZI

JEPPESSEN  
24 APR 15 10-3C

DALIAN, PR OF CHINA  
Eff 29 Apr 1600Z  
RNAV SID

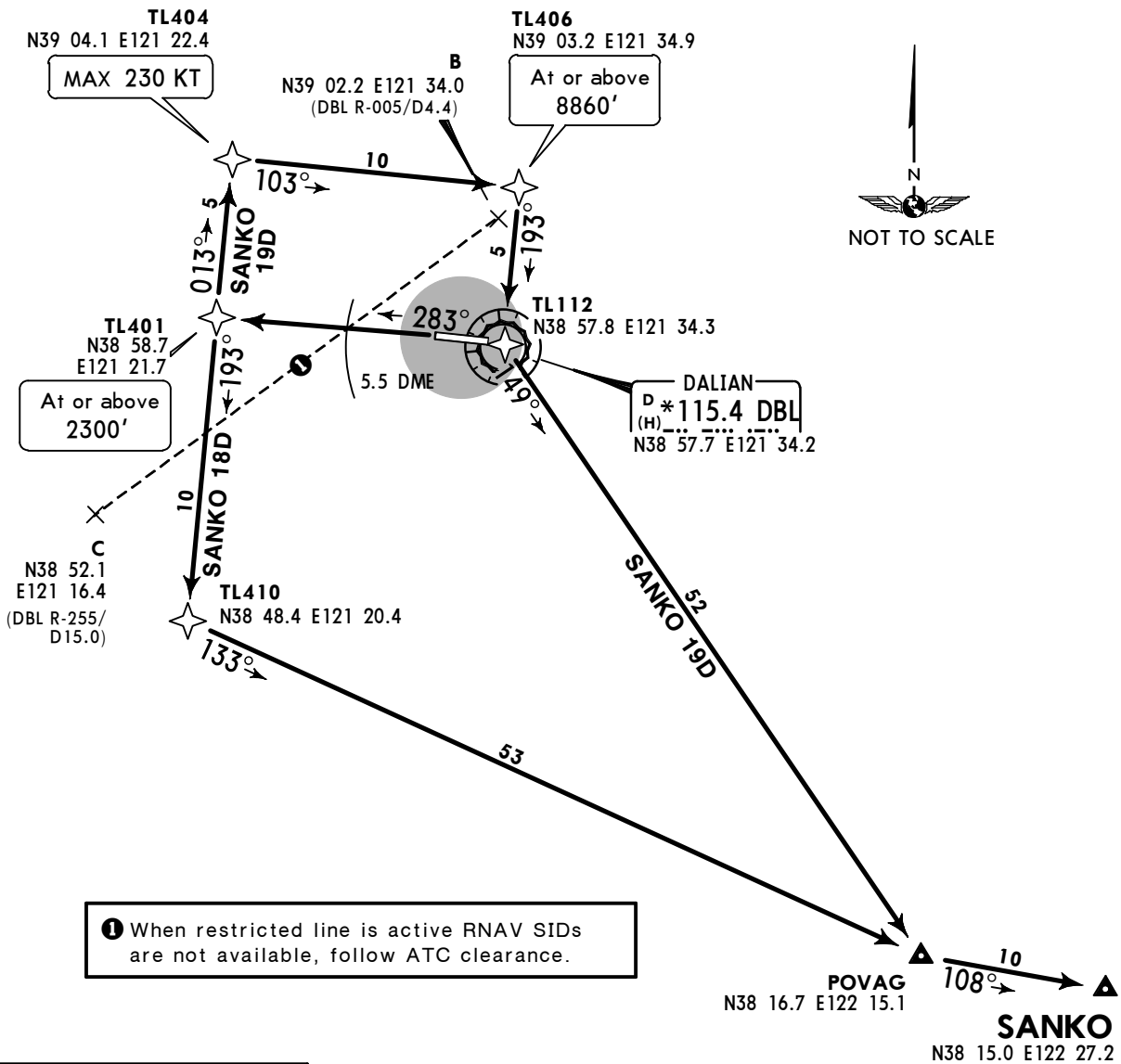
Apt Elev  
108'

Trans level: FL118    Trans alt: 9850'  
10830' 1031 hPa or above  
8860' 979 hPa or below

180°  
4300'  
3700'  
270°

MSA  
DBL VOR

SANKO 18D [SAN18D]  
SANKO 19D [SAN19D]  
RWY 28 RNAV DEPARTURES  
RNAV (GNSS)  
RNAV 1  
RADAR REQUIRED  
**SPEED: MAX 250 KT BELOW 9850'**



FT/METER CONVERSION	
QNH	
2300'	700m
8860'	2700m
9850'	3000m
10830'	3300m

FL CONVERSION	
FL118	FL3600m

Gnd speed-KT	75	100	150	200	250	300
5.5% V/V (fpm)	418	557	835	1114	1392	1671

No climb gradient applies when VIS greater than 5000m, ceiling greater than 919'.

SID	ROUTING
SANKO 18D BY ATC	TL401 (2300'+) - TL410 - POVAG - SANKO.
SANKO 19D	TL401 (2300'+) - TL404 (K230-) - TL406 (8860'+) - TL112 - POVAG - SANKO.

DALIAN, PR OF CHINA  
RNAV SID

ZYTL/DLC  
ZHOUSHUIZI

JEPPESSEN  
27 MAY 16 10-3E

DALIAN, PR OF CHINA

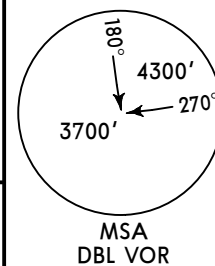
RNAV SID

Apt Elev  
108'

Trans level: FL118 Trans alt: 9850'

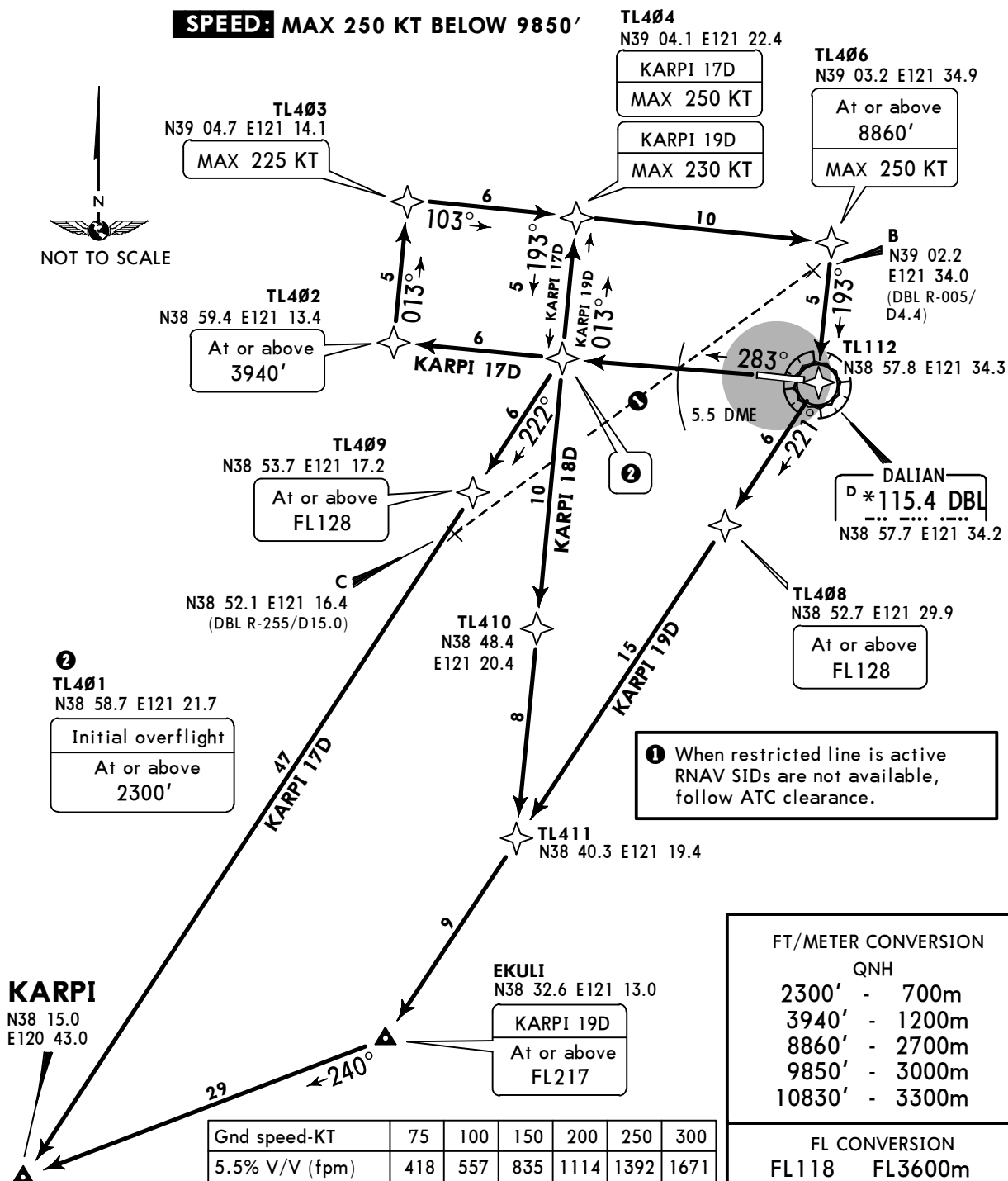
10830' 1031 hPa or above  
8860' 979 hPa or below

1. RADAR required.
2. RNAV (GNSS) required.
3. RNAV 1.



KARPI 17D [KAR17D], KARPI 18D [KAR18D]  
KARPI 19D [KAR19D]  
RWY 28 RNAV DEPARTURES

**SPEED:** MAX 250 KT BELOW 9850'



FT/METER CONVERSION

QNH	
2300'	700m
3940'	1200m
8860'	2700m
9850'	3000m
10830'	3300m

FL CONVERSION

FL118	FL3600m
FL128	FL3900m
FL217	FL6600m

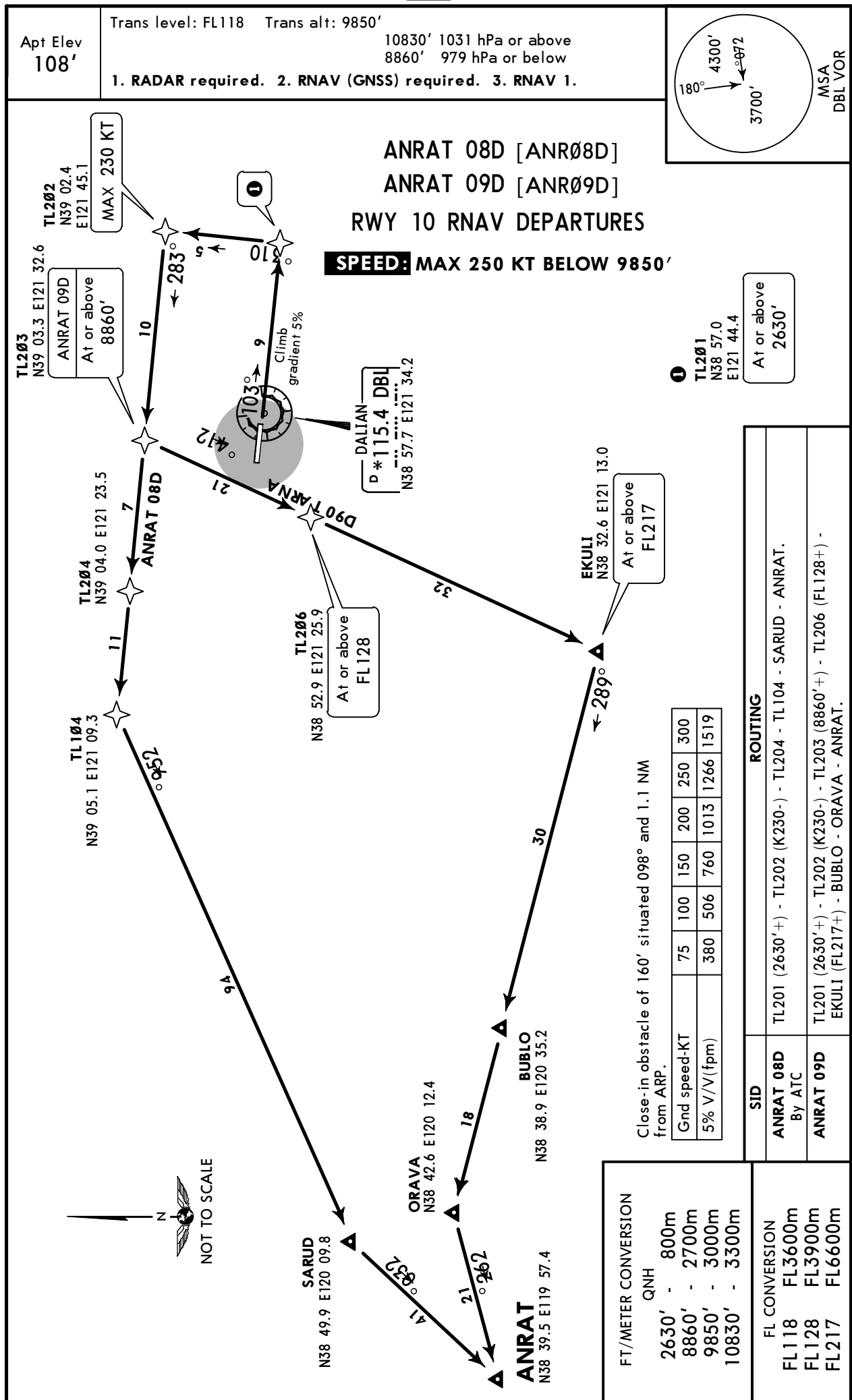
Gnd speed-KT	75	100	150	200	250	300
5.5% V/V (fpm)	418	557	835	1114	1392	1671

No climb gradient applies when VIS greater than 5000m, greater than ceiling 919'.

SID	ROUTING
KARPI 17D By ATC	TL401 (2300'+) - TL402 (3940'+) - TL403 (K225-) - TL404 (K250-) - TL401 - TL409 (FL128+) - KARPI.
KARPI 18D By ATC	TL401 (2300'+) - TL410 - TL411 - EKULI - KARPI.
KARPI 19D	TL401 (2300'+) - TL404 (K230-) - TL406 (8860'+; K250-) - TL112 - TL408 (FL128+) - TL411 - EKULI (FL217+) - KARPI.

CHANGES: Crossing at EKULI revised.

© JEPPESEN, 2015, 2016. ALL RIGHTS RESERVED.





**ZYTL/DLC**  
**ZHOUSHUIZI**

**JEPPESSEN**  
27 MAY 16 **(10-3G)**

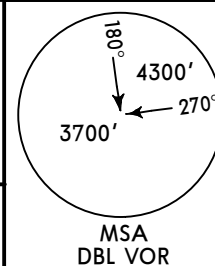
**DALIAN, PR OF CHINA**  
**RNAV SID**

Apt Elev  
**108'**

Trans level: FL118 Trans alt: 9850'

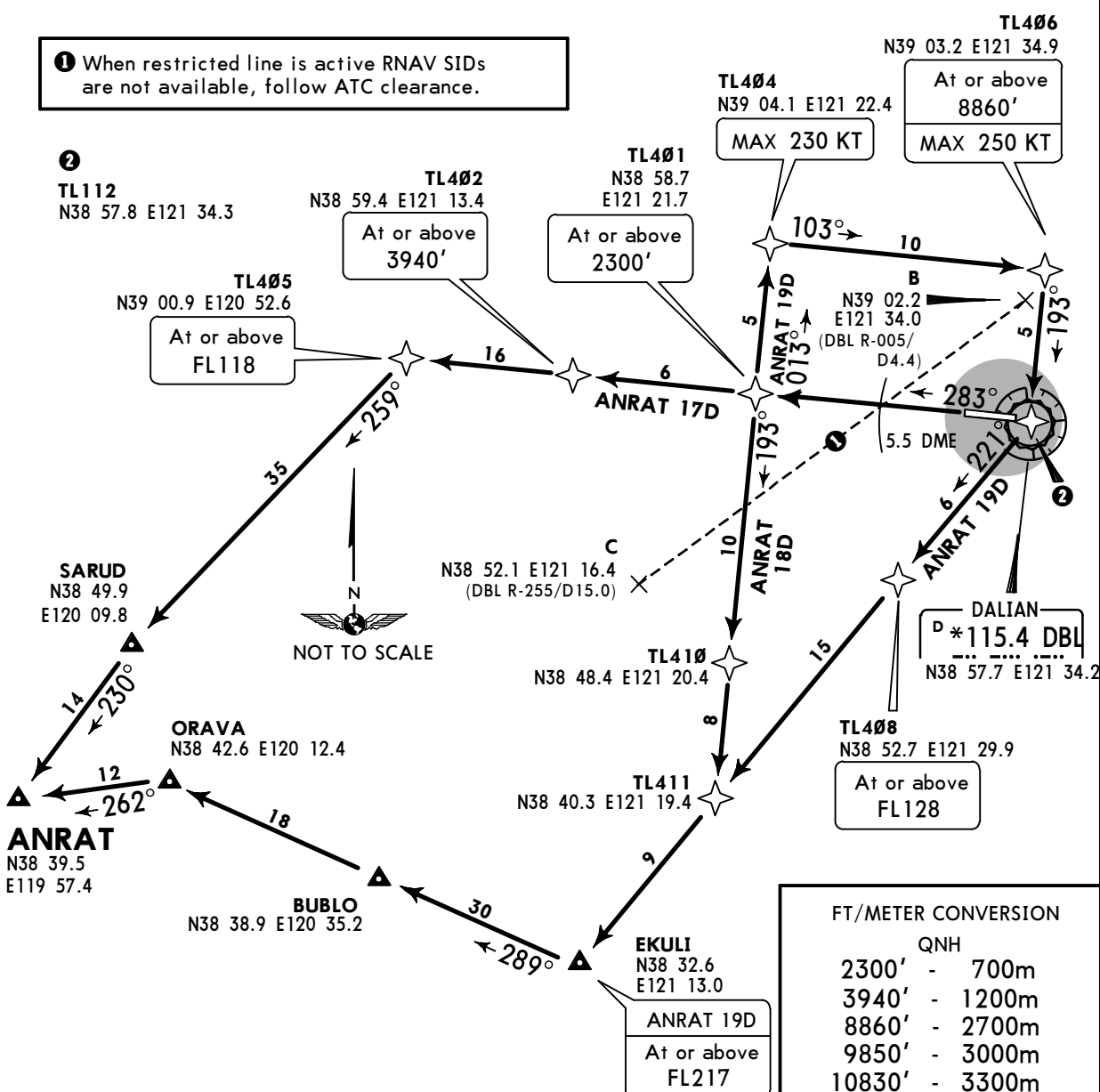
10830' 1031 hPa or above  
8860' 979 hPa or below

1. **RADAR required.**
2. **RNAV (GNSS) required.**
3. **RNAV 1.**



**ANRAT 17D [ANR17D]**  
**ANRAT 18D [ANR18D]**  
**ANRAT 19D [ANR19D]**  
**RWY 28 RNAV DEPARTURES**  
**SPEED: MAX 250 KT BELOW 9850'**

① When restricted line is active RNAV SIDs are not available, follow ATC clearance.



Gnd speed-KT	75	100	150	200	250	300
5.5% V/V (fpm)	418	557	835	1114	1392	1671

No climb gradient applies when VIS greater than 5000m, greater than ceiling 919'.

**FT/METER CONVERSION**

	QNH
2300'	700m
3940'	1200m
8860'	2700m
9850'	3000m
10830'	3300m

**FL CONVERSION**

FL118	FL3600m
FL128	FL3900m
FL217	FL6600m

SID	ROUTING
<b>ANRAT 17D</b> By ATC	TL401 (2300'+) - TL402 (3940'+) - TL405 (FL118+) - SARUD - ANRAT.
<b>ANRAT 18D</b> By ATC	TL401 (2300'+) - TL410 - TL411 - EKULI - BUBLO - ORAVA - ANRAT.
<b>ANRAT 19D</b>	TL401 (2300'+) - TL404 (K230-) - TL406 (8860'+; K250-) - TL112 - TL408 (FL128+) - TL411 - EKULI (FL217+) - BUBLO - ORAVA - ANRAT.

CHANGES: Crossing at EKULI revised.

© JEPPESSEN, 2015, 2016. ALL RIGHTS RESERVED.





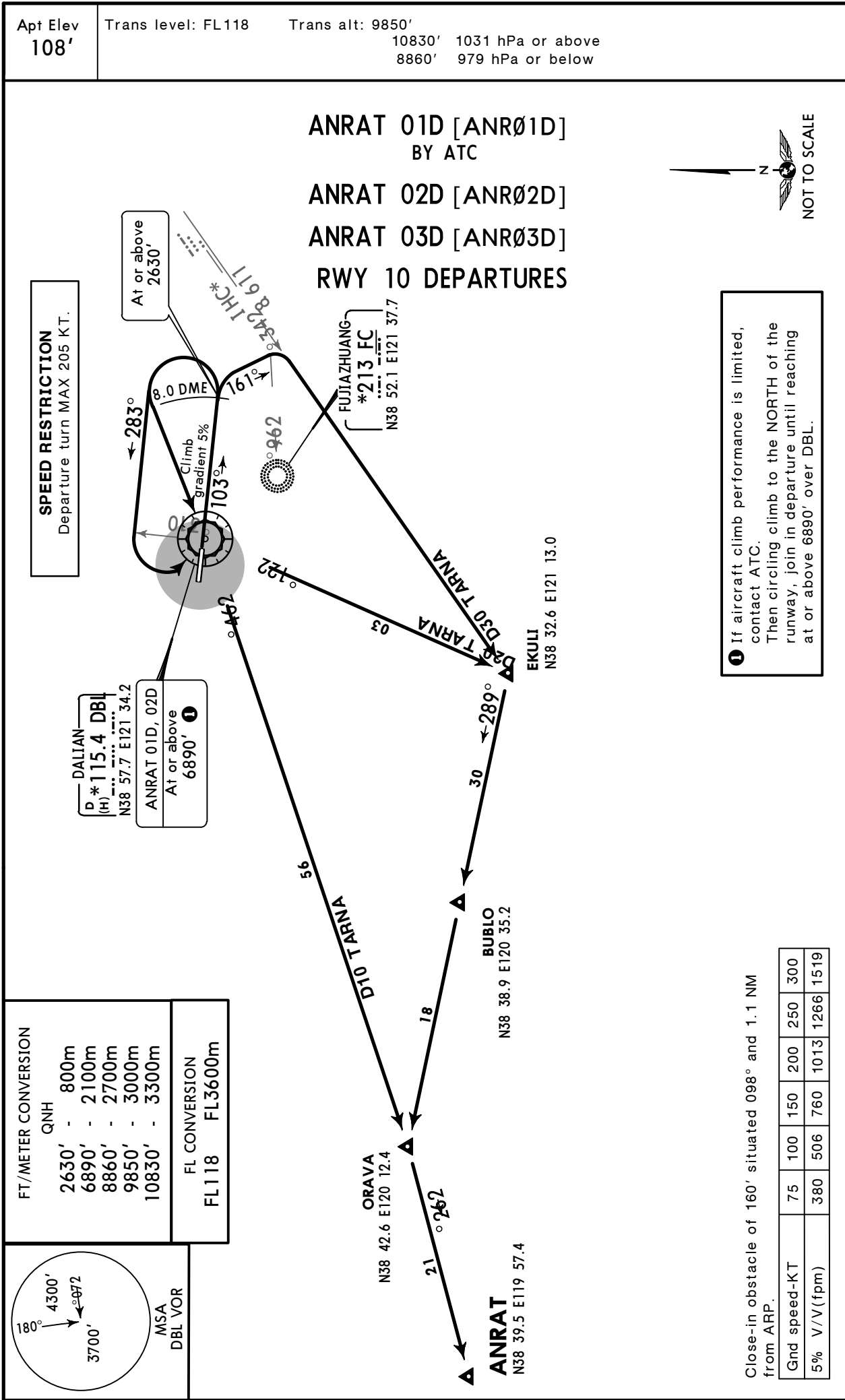
ZYTL/DLC  
ZHOU SHUIZI

24 APR 15 10-3K

Eff 29 Apr 1600Z

DALIAN, PR OF CHINA

SID



ZYTL/DLC  
ZHOUSHUIZI

24 APR 15

10-3L

Eff 29 Apr 1600Z

DALIAN, PR OF CHINA

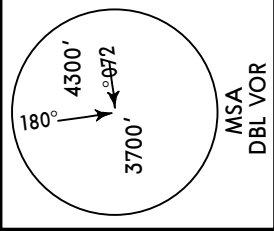
SID

Apt Elev  
108'

Trans level: FL118

Trans alt: 9850'

10830' 1031 hPa or above  
8860' 979 hPa or below

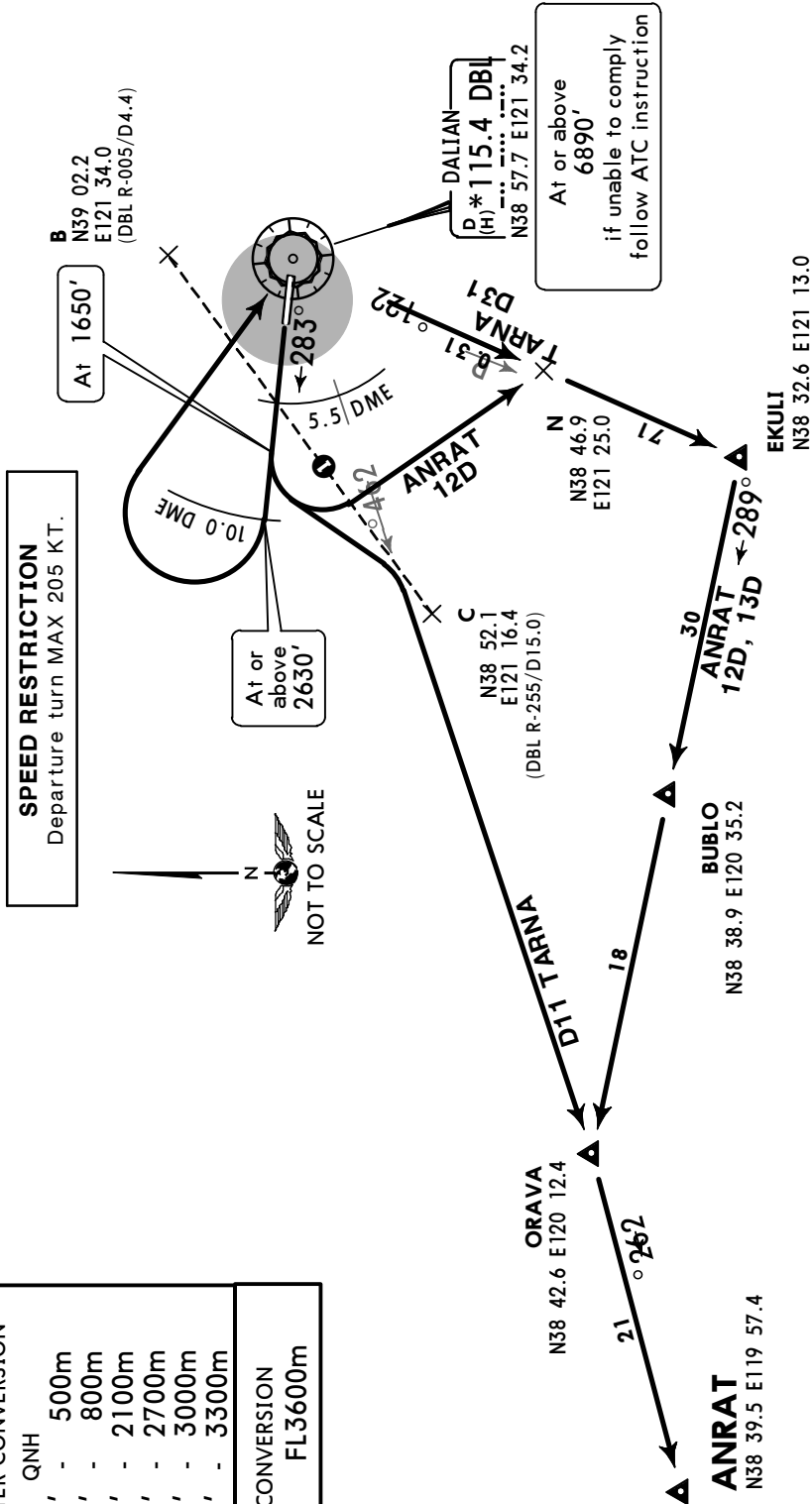


ANRAT 11D [ANR11D]  
BY ATC

ANRAT 12D [ANR12D]

ANRAT 13D [ANR13D]

RWY 28 DEPARTURES



1 Crossing the vertical line is strictly forbidden without ATC clearance. When restriction active only LEFT turn at or above 1650' is allowed. Otherwise departure from runway 28 is not permitted.

FT/METER CONVERSION

QNH

1650'	-	500m
2630'	-	800m
6890'	-	2100m
8860'	-	2700m
9850'	-	3000m
10830'	-	3300m

FL CONVERSION

FL118 FL3600m

Due to obstacle of 822' (2.5NM from THR Rwy 10 and 0.21NM NORTH of RCL) these SIDs require a minimum climb gradient of 5.5%.

Gnd speed-KT	75	100	150	200	250	300
5.5% V/V(fpm)	418	557	835	1114	1392	1671

No climb gradient applies when VIS greater than 5000m, ceiling greater than 919'.

ZYTL/DLC

Apt Elev 108'  
N38 58.0 E121 32.4



JEPPesen

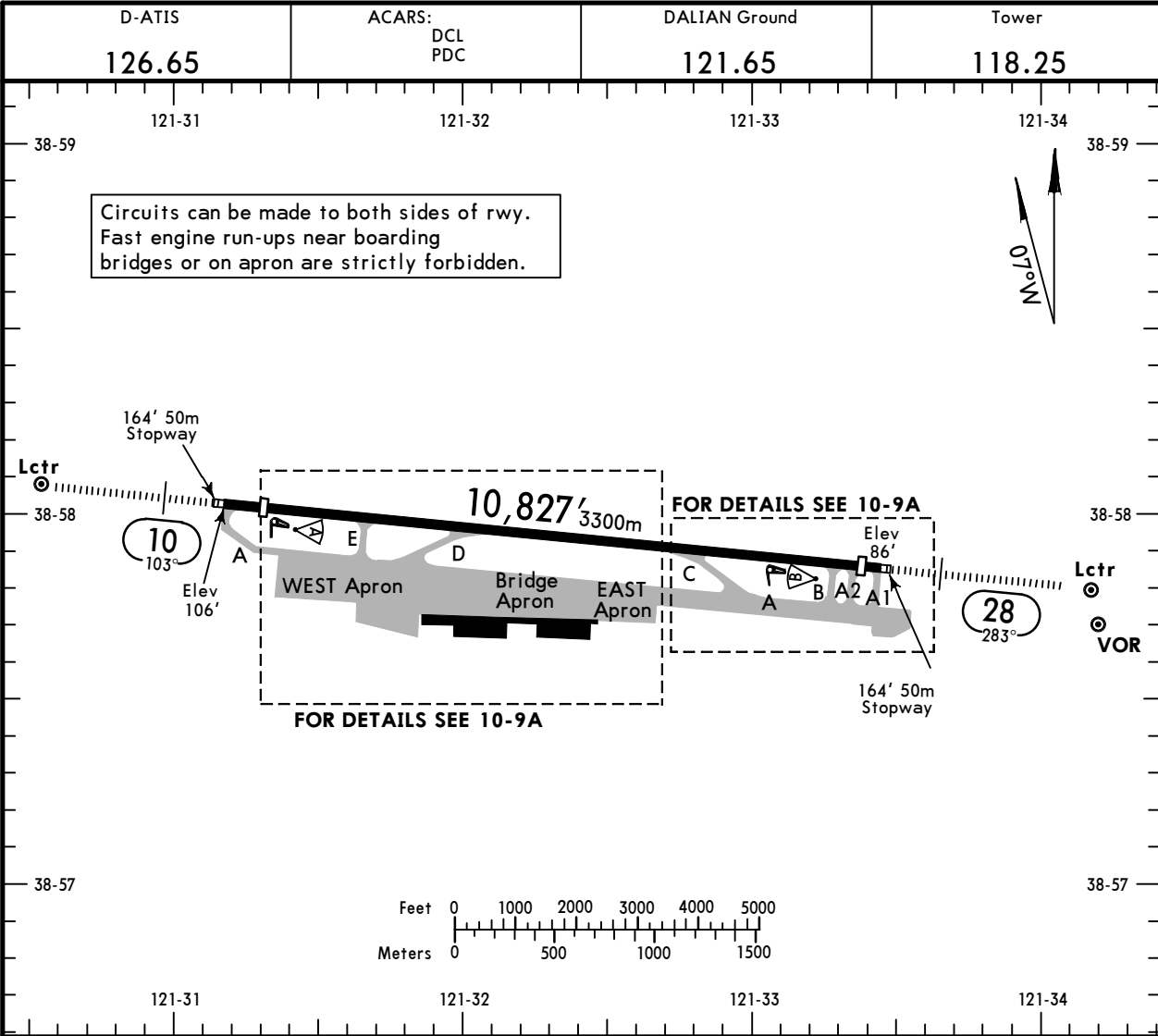
DALIAN, PR OF CHINA

22 APR 16

10-9

Eff 27 Apr 1600Z

ZHOUSHUIZI



ADDITIONAL RUNWAY INFORMATION											
RWY							USABLE LENGTHS			TAKE-OFF	WIDTH
							LANDING BEYOND				
							Threshold	Glide Slope			
10	HIRL (60m)	CL(30m)	HIALS	SFL	PAPI-L (3.28°)	RVR	10,171' 3100m	9121'	2780m		148'
28	HIRL (60m)	CL(30m)	HIALS	SFL	PAPI-L (3.01°)	RVR	10,499' 3200m	9443'	2878m		45m

Standard			
TAKE-OFF			
	With HIRL and CL	With HIRL or CL	Without HIRL and CL
2 Eng	RVR 500m	RVR 600m	VIS 1600m
3 & 4 Eng			VIS 800m

ZYTL/DLC



JEPPESSEN

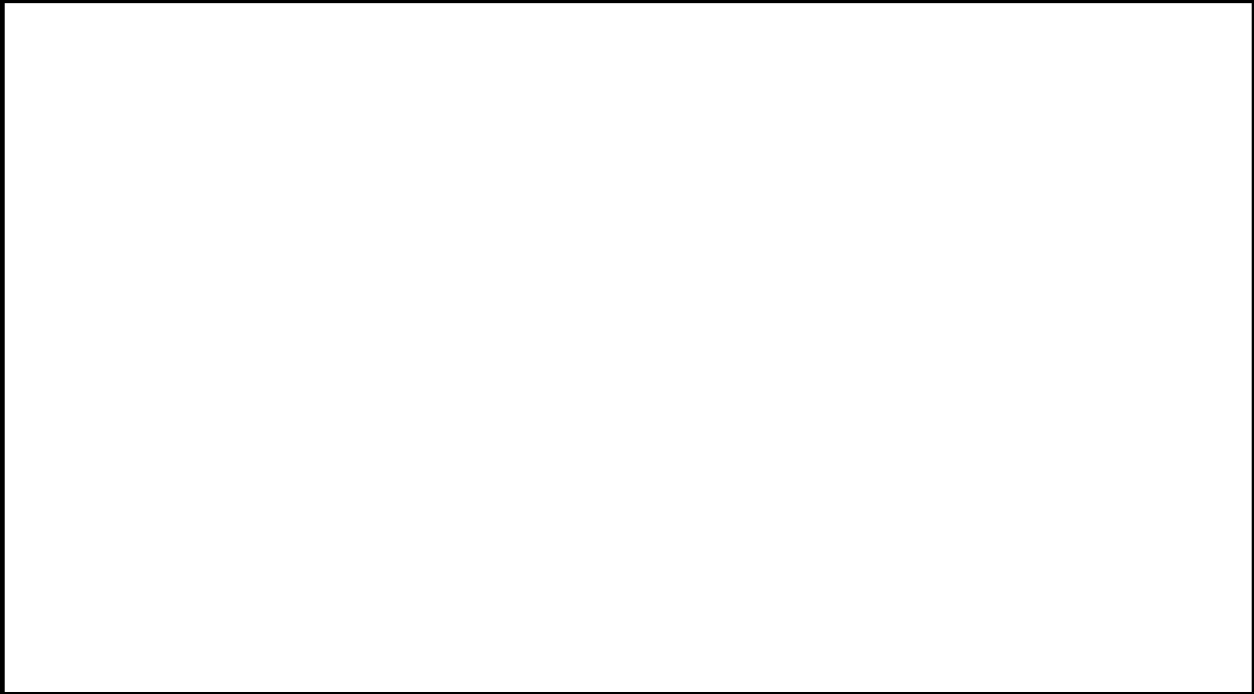
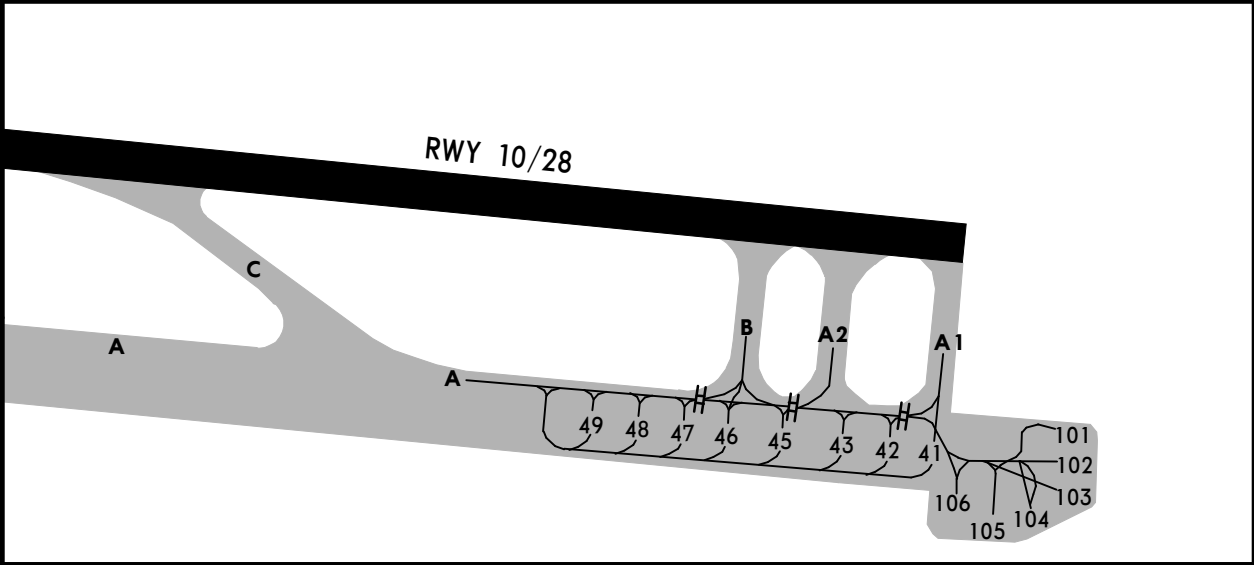
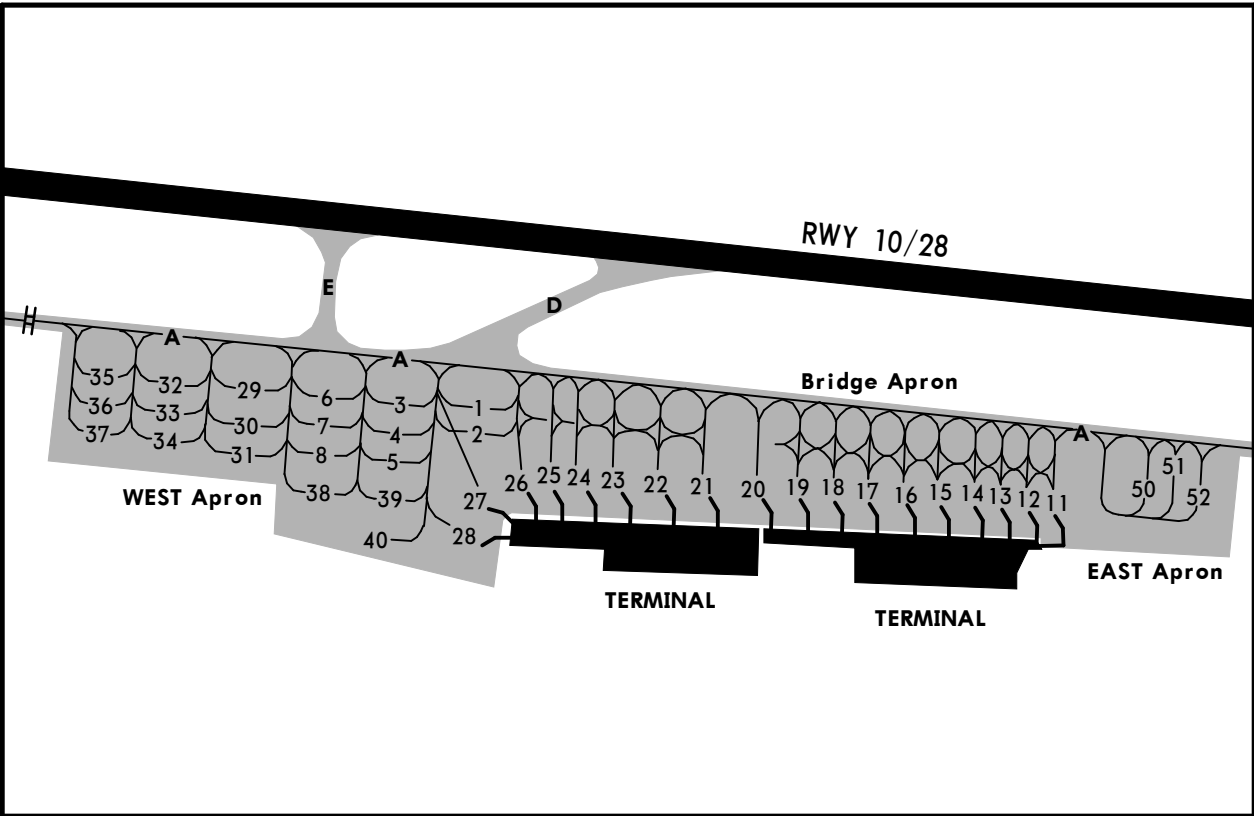
DALIAN, PR OF CHINA

22 APR 16

10-9A

Eff 27 Apr 1600Z

ZHOUSHUIZI



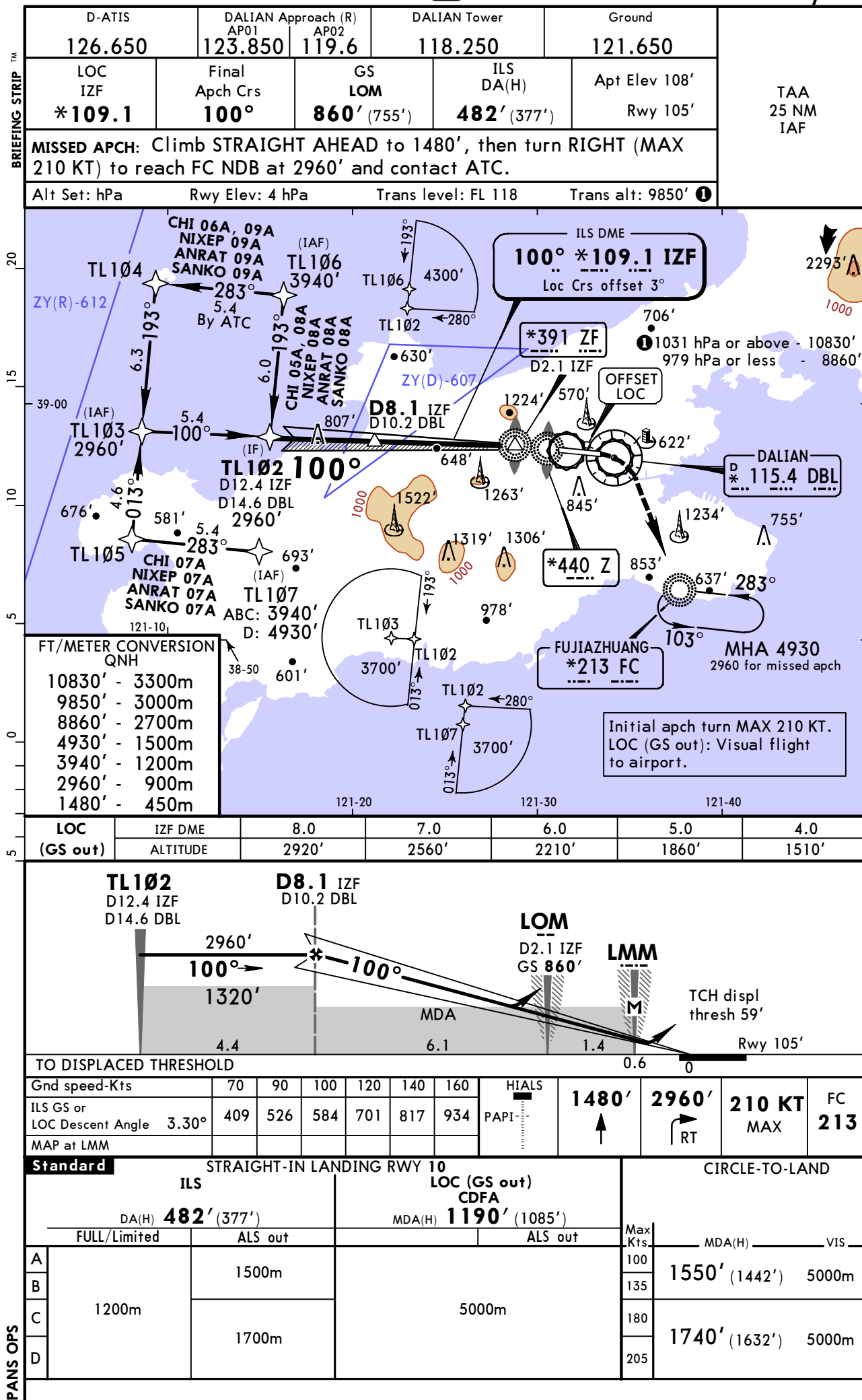
CHANGES: Apron East extended. New stand added.

© JEPPESSEN, 2007, 2016. ALL RIGHTS RESERVED.

**ZYTL/DLC**  
**ZHOUSHUIZI**

**JEPPESSEN**  
29 MAY 15 **(11-1)**

**DALIAN, PR OF CHINA**  
**RNAV ILS DME Z Rwy 10**

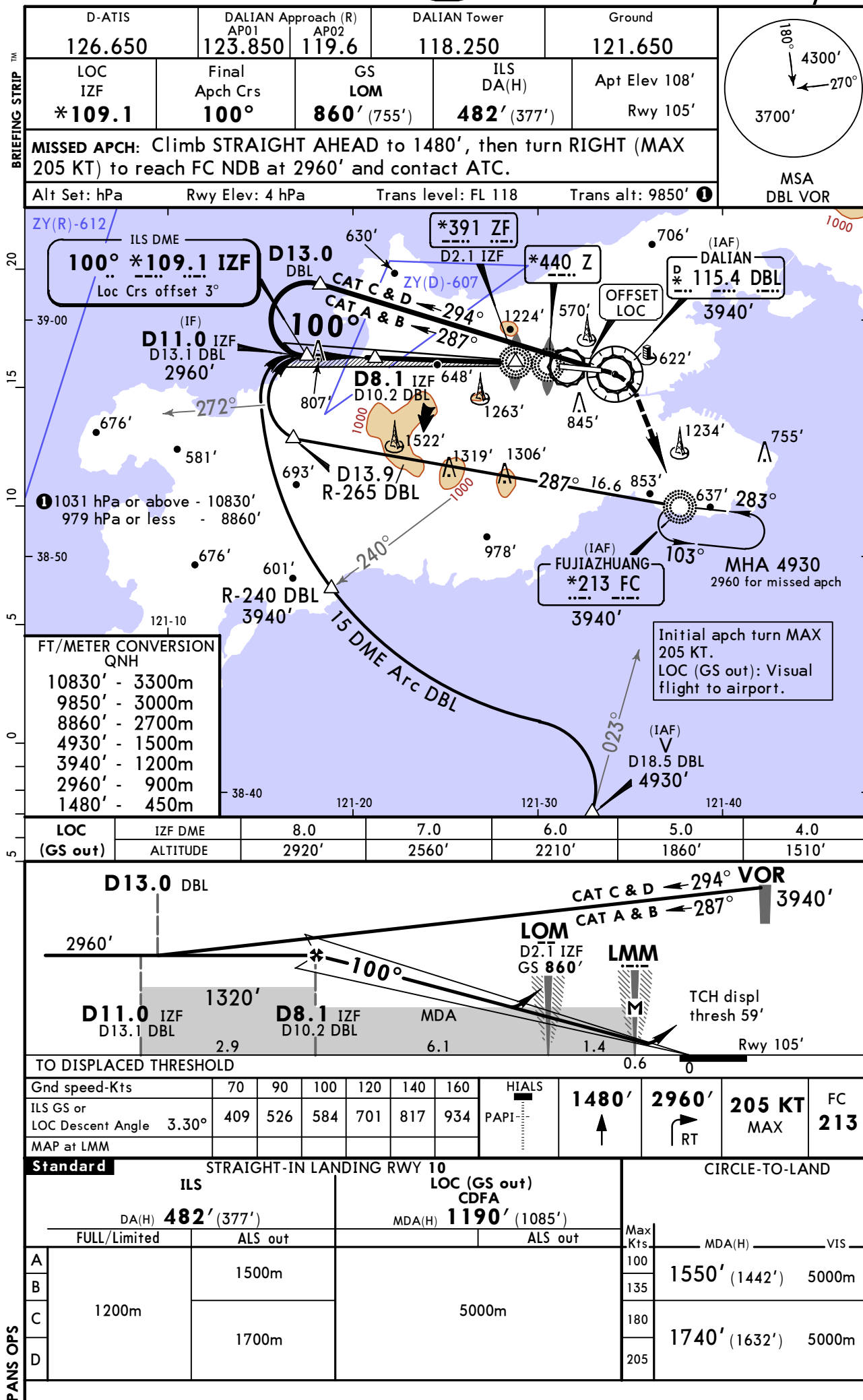




**ZYTL/DLC**  
**ZHOUSHUIZI**

**JEPPESSEN**  
29 MAY 15 **(11-2)**

**DALIAN, PR OF CHINA**  
**ILS DME Y Rwy 10**



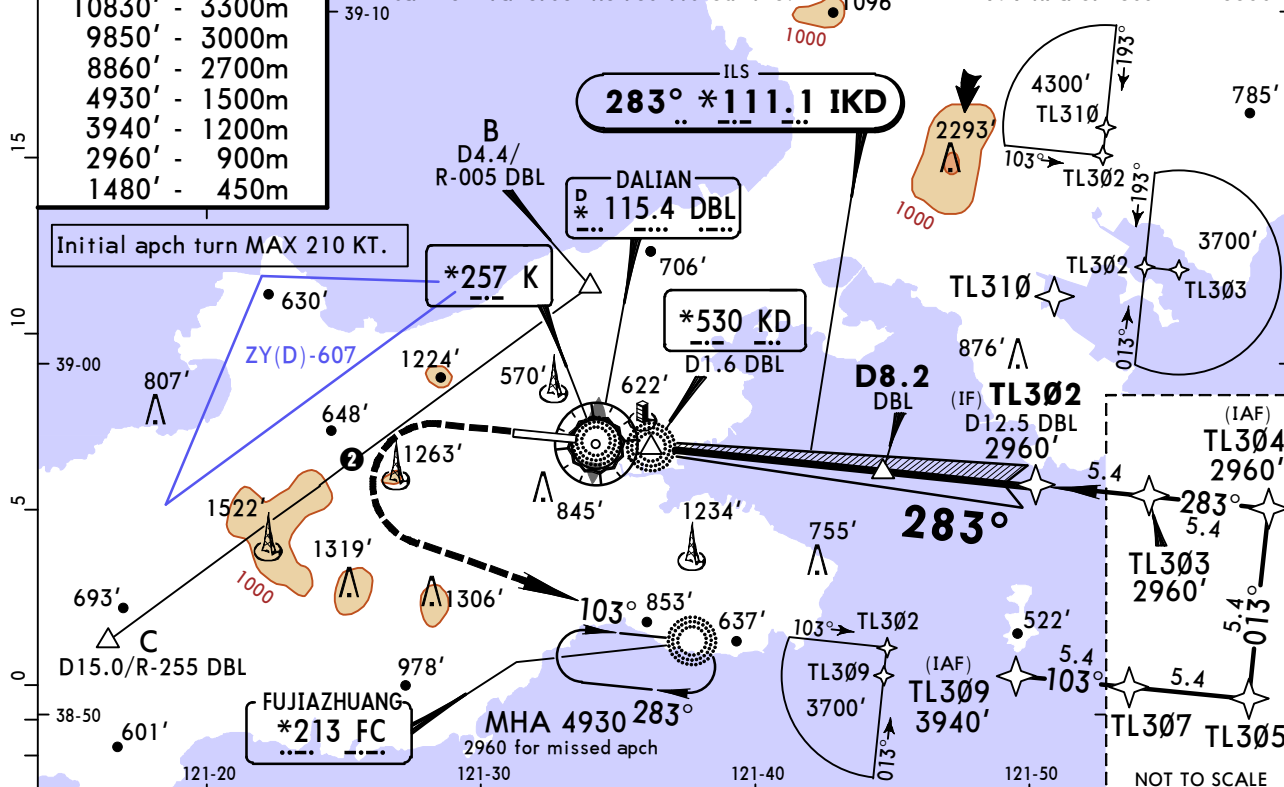
DALIAN, PR OF CHINA  
RNAV ILS DME Z Rwy 28

D-ATIS	DALIAN Approach (R)		DALIAN Tower	Ground	TAA 25 NM IAF
126.650	AP01 123.850	AP02 119.6	118.250	121.650	
LOC IKD *111.1	Final Apch Crs 283°	GS KD NDB 846' (761')	ILS DA(H) Refer to Minimums	Apt Elev 108'  Rwy 85'	
<b>MISSED APCH: Climb STRAIGHT AHEAD to 1480' or above, then turn LEFT (MAX 210 KT) to reach FC NDB at 2960' and contact ATC.</b>					
Alt Set: hPa      Rwy Elev: 3 hPa      Trans level: FL 118      Trans alt: 9850' <b>①</b>					

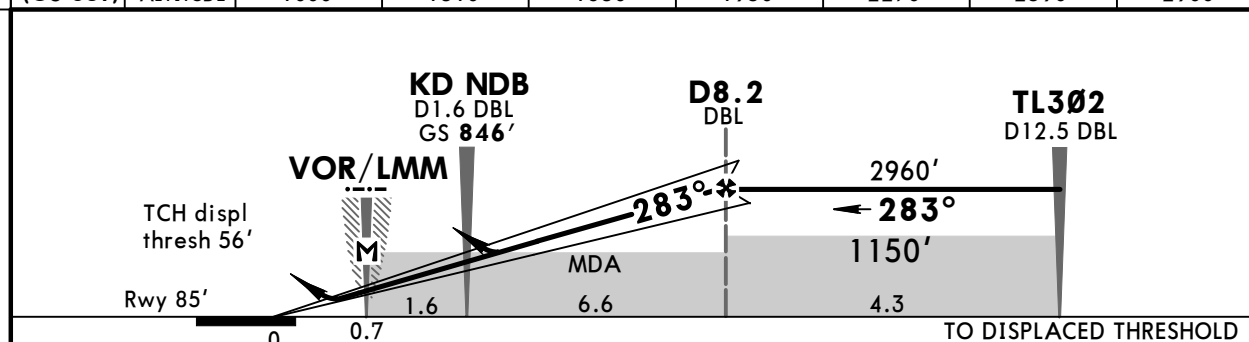
FT/METER CONVERSION QNH	
10830'	3300m
9850'	3000m
8860'	2700m
4930'	1500m
3940'	1200m
2960'	900m
1480'	450m


② Without ATC permission, pilot can not traverse the restricted line.

1031 hPa or above - 10830'  
979 hPa or less - 8860'



LOC	DBL DME	2.0	3.0	4.0	5.0	6.0	7.0	8.0
(GS out)	ALTITUDE	1000'	1310'	1630'	1950'	2270'	2590'	2900'



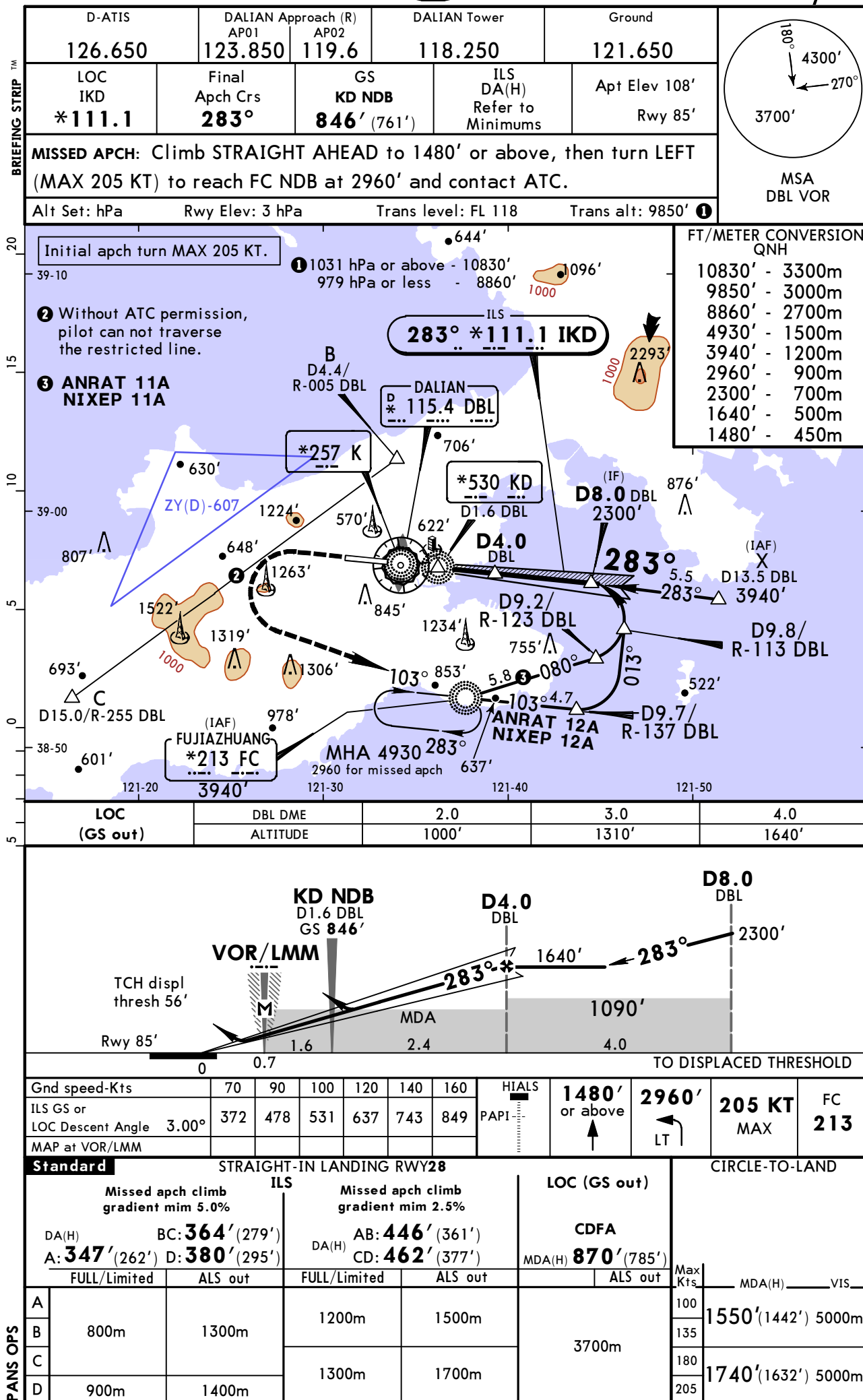
Gnd speed-Kts	70	90	100	120	140	160		<b>1480'</b> or above ↑	<b>2960'</b> ← LT	<b>210 KT</b> MAX	<b>FC</b> <b>213</b>
ILS GS or LOC Descent Angle 3.00°	372	478	531	637	743	849					
MAP at VOR/LMM											

Standard		STRAIGHT-IN LANDING RWY28				LOC (GS out)		CIRCLE-TO-LAND	
Missed apch climb gradient mim 5.0%		ILS Missed apch climb gradient mim 2.5%				CDFA			
DA(H) BC: <b>364'</b> (279')		DA(H) AB: <b>446'</b> (361')				MDA(H) <b>870'</b> (785')			
A: <b>347'</b> (262') D: <b>380'</b> (295')		CD: <b>462'</b> (377')							
FULL/Limited		ALS out		FULL/Limited		ALS out		Max Kts	MDA(H) _____ VIS _____
A	800m	1300m	1200m	1500m	3700m			100	1550'(1442') 5000m
B									
C			1300m	1700m					
D	900m	1400m						205	

**ZYTL/DLC**  
**ZHOUSHUIZI**

**JEPPESSEN**  
29 MAY 15 **(11-4)**

**DALIAN, PR OF CHINA**  
**ILS DME Y Rwy 28**



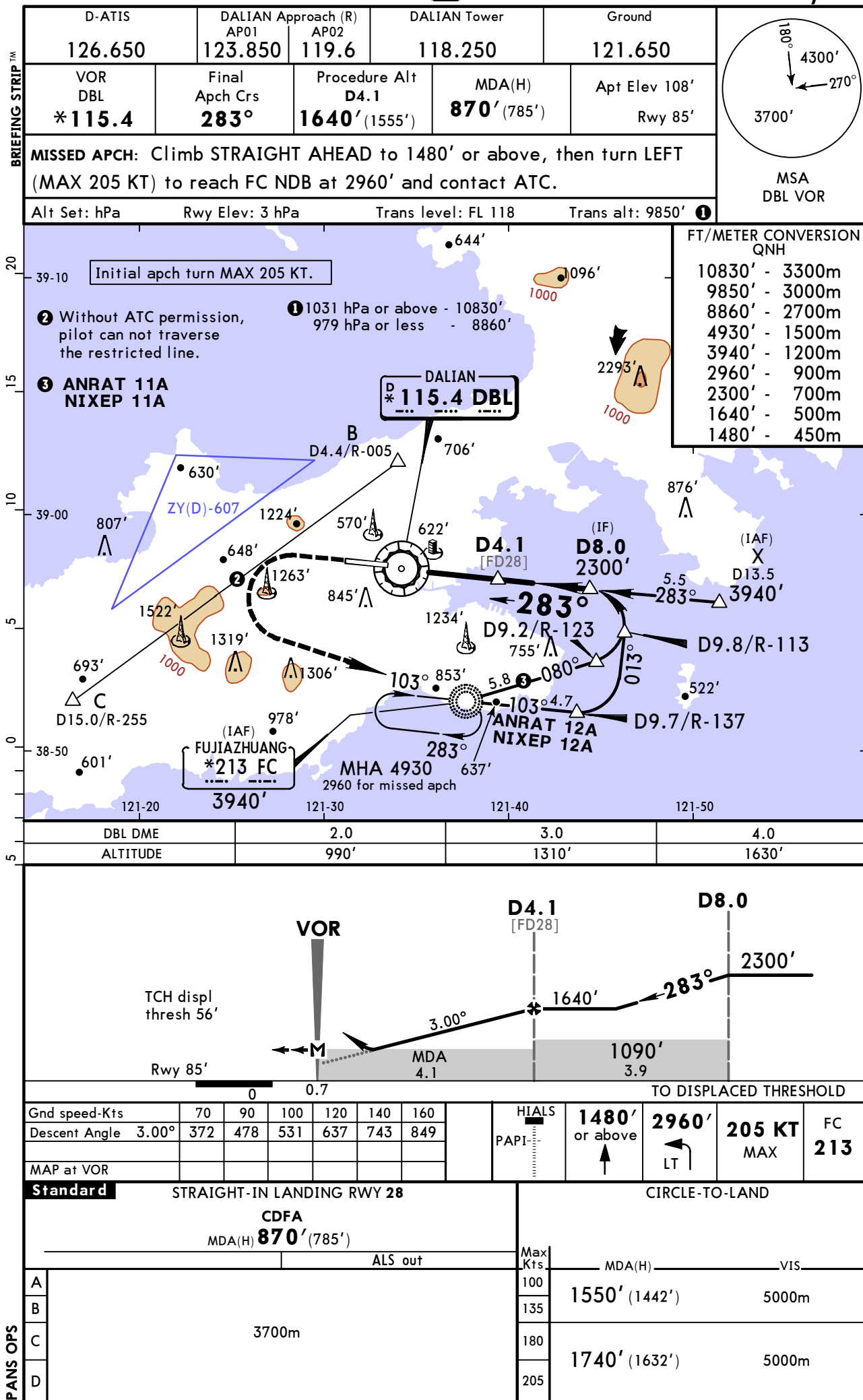
CHANGES: Circling minimums.

© JEPPESSEN, 1999, 2015. ALL RIGHTS RESERVED.

ZYTL/DLC  
ZHOU SHUIZI

JEPPESSEN  
29 MAY 15 (13-1)

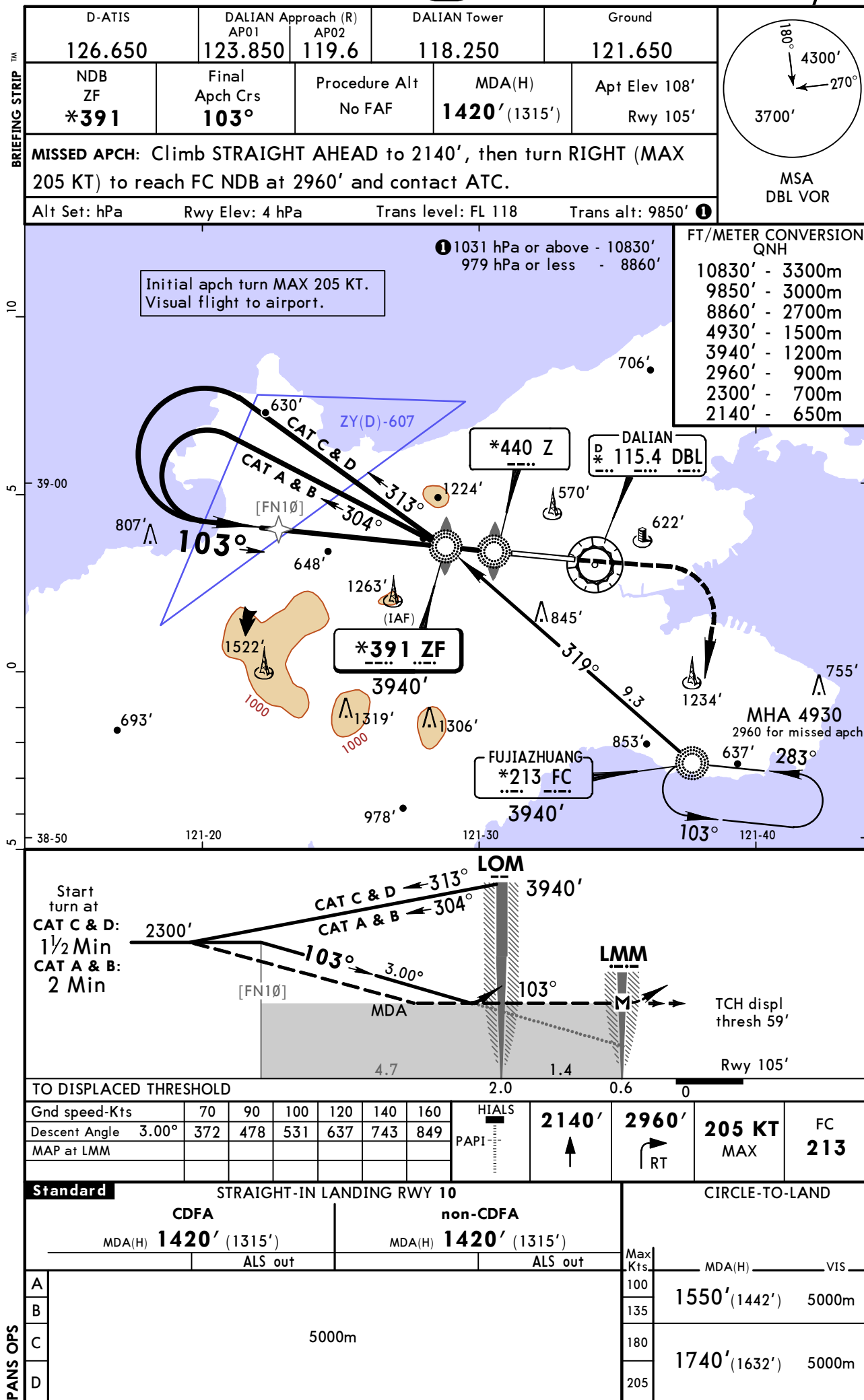
DALIAN, PR OF CHINA  
VOR DME Rwy 28



**ZYTL/DLC**  
**ZHOUSHUIZI**

**JEPPESSEN**  
29 MAY 15 **(16-1)**

**DALIAN, PR OF CHINA**  
**NDB Rwy 10**





**ZYTL/DLC**  
**ZHOUSHUIZI**

**JEPPESSEN**  
26 AUG 16 **(16-2)**

**DALIAN, PR OF CHINA**  
**NDB Rwy 28**

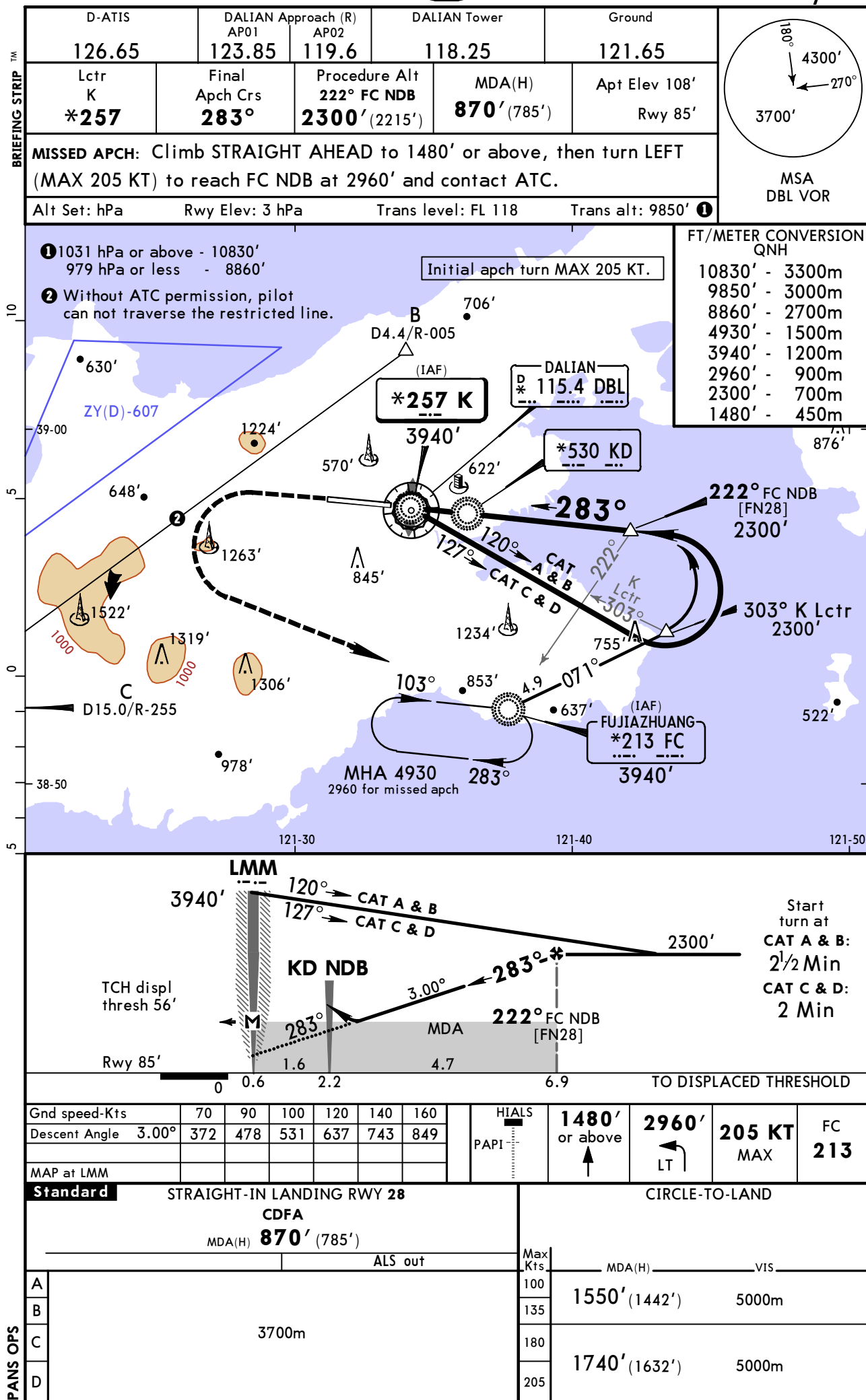


Chart changes since cycle 18-2016

ADD = added chart, REV = revised chart, DEL = deleted chart.

ACT	PROCEDURE IDENT	INDEX	REV DATE	EFF DATE
DALIAN, (ZHOSHUIZI - ZYTL)				

## TERMINAL CHART CHANGE NOTICES

### No Chart Change Notices for Airport ZYTL

### Chart Change Notices for Country CHN

**Type:** Gen Tmnl

**Effectivity:** Permanent

**Begin Date:** 20150429

**End Date:** No end date

At the following airports disregard the note "QNH on req" as QFE is avbl only: ZGNN, ZSQZ, ZSWX, ZYJM, ZYMD, ZYQQ and ZYYJ.