

List of pages in this Trip Kit

Trip Kit Index

Airport Information For ZJSY

Terminal Charts For ZJSY

Revision Letter For Cycle 07-2016

Change Notices

Notebook

General Information

Location: SANYA CHN
ICAO/IATA: ZJSY / SYX
Lat/Long: N18°18.1', E109°24.8'
Elevation: 95 ft

Airport Use: Public
Daylight Savings: Not Observed
UTC Conversion: -8:00 = UTC
Magnetic Variation: 1.0°W

Fuel Types: Jet A-1
Repair Types: Minor Airframe, Minor Engine
Customs: Yes
Airport Type: IFR
Landing Fee: Yes
Control Tower: Yes
Jet Start Unit: No
LLWS Alert: No
Beacon: No

Sunrise: 2303 Z
Sunset: 1007 Z

Runway Information

Runway: 08
Length x Width: 11155 ft x 148 ft
Surface Type: concrete
TDZ-Elev: 62 ft
Lighting: Edge, ALS, Centerline
Stopway: 197 ft

Runway: 26
Length x Width: 11155 ft x 148 ft
Surface Type: concrete
TDZ-Elev: 94 ft
Lighting: Edge, ALS, Centerline
Stopway: 197 ft

Communication Information

ATIS: 126.450

Fenghuang Tower: 118.850 Secondary

Fenghuang Tower: 118.150

Fenghuang Ground: 121.700

Sanya Approach: 125.550

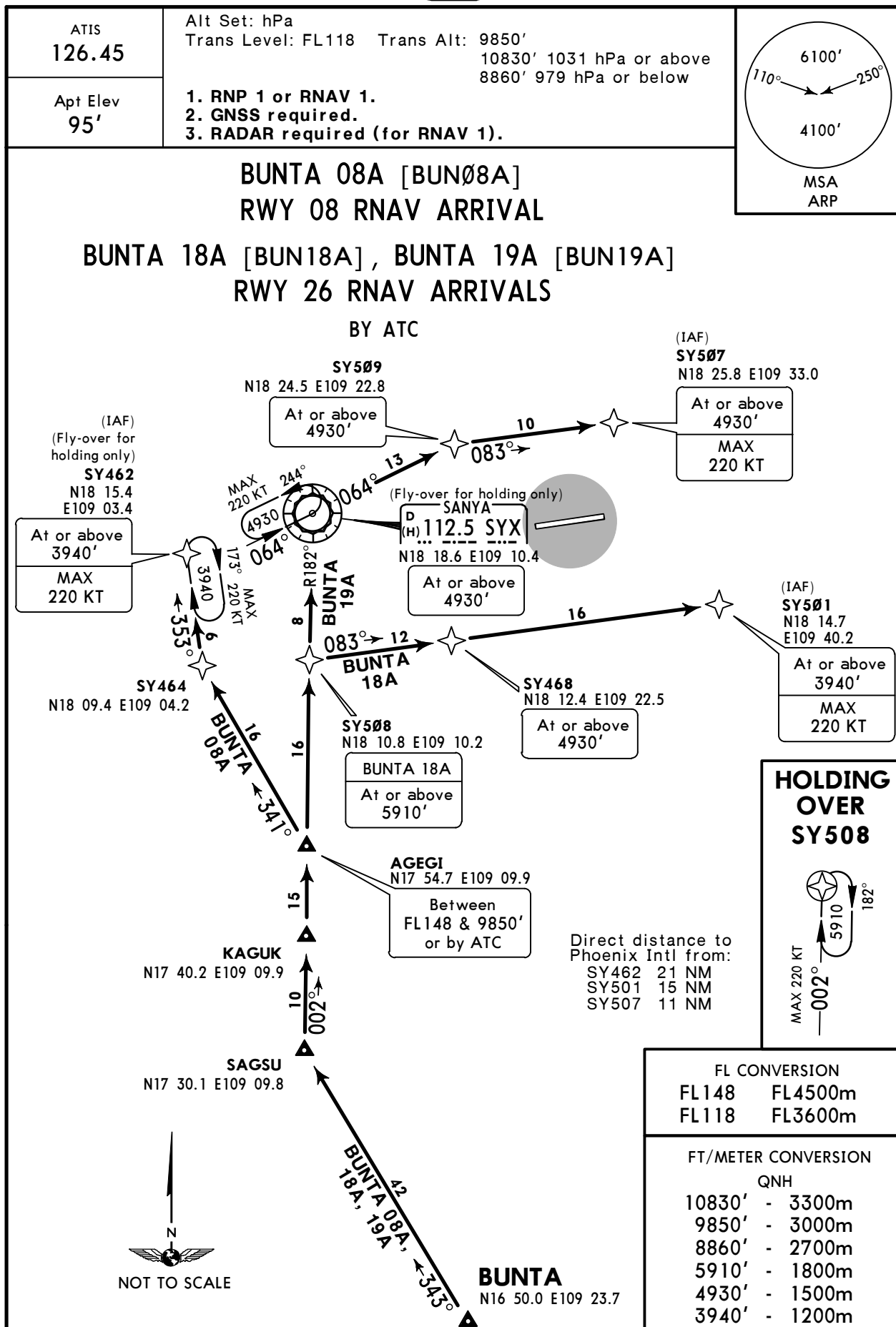
Sanya Approach: 119.250 Secondary

ZJSY/SYX
PHOENIX INTL

JEPPESSEN
11 SEP 15 **10-2**

SANYA, PR OF CHINA
Eff 16 Sep 1600Z

RNAV STAR



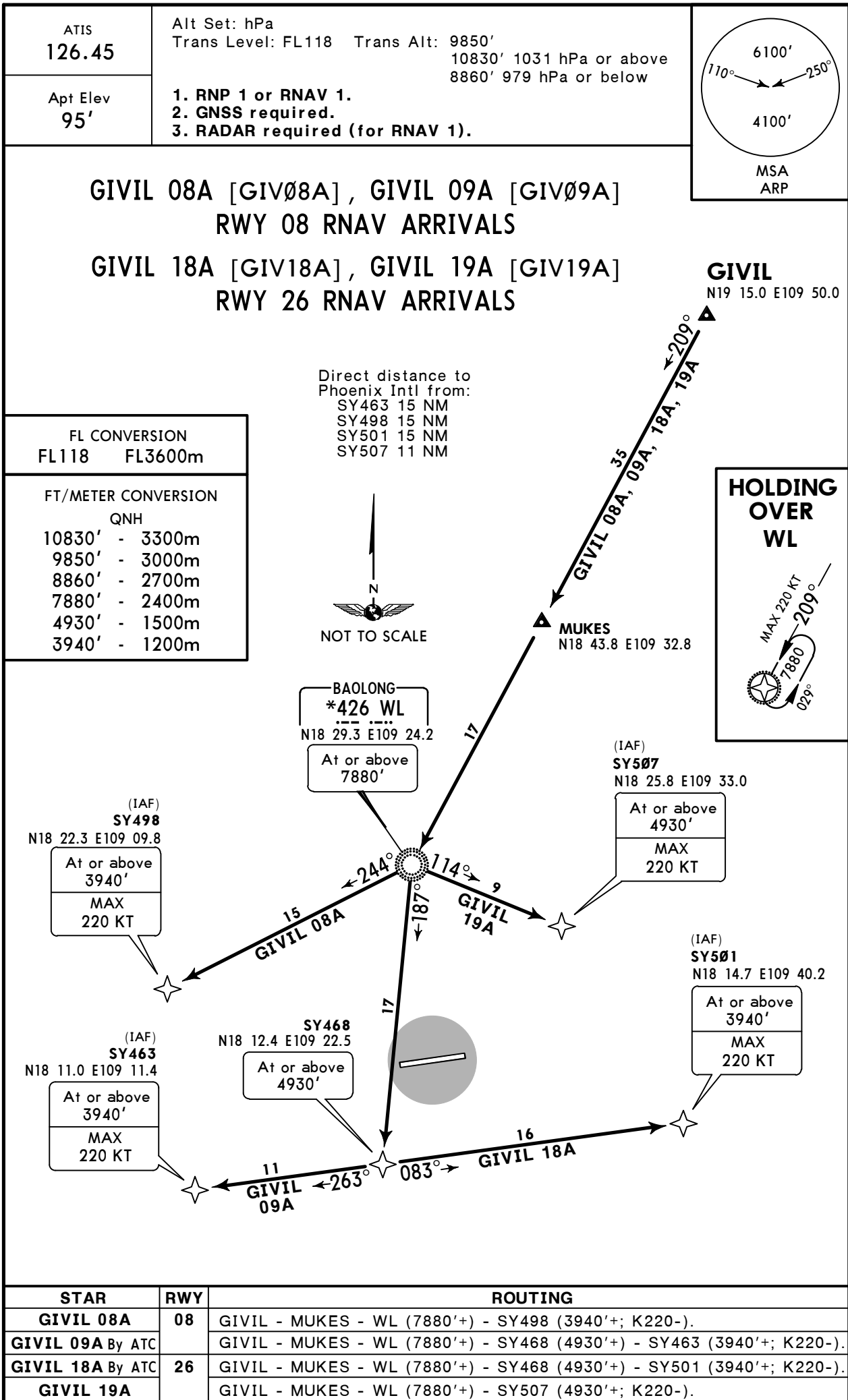
STAR	RWY	ROUTING
BUNTA 08A	08	BUNTA - SAGSU - KAGUK - AGEGI (FL148-; 9850'+ or by ATC) - SY464 - SY462 (3940'+; K220-).
BUNTA 18A	26	BUNTA - SAGSU - KAGUK - AGEGI (FL148-; 9850'+ or by ATC) - SY508 (5910'+) - SY468 (4930'+) - SY501 (3940'+; K220-).
BUNTA 19A		BUNTA - SAGSU - KAGUK - AGEGI (FL148-; 9850'+ or by ATC) - SYX (4930'+) - SY509 (4930'+) - SY507 (4930'+; K220-).

ZJSY/SYX
PHOENIX INTL

JEPPESSEN
11 SEP 15 **10-2B**

SANYA, PR OF CHINA
Eff 16 Sep 1600Z

RNAV STAR



CHANGES: RNAV STARs established; STARs transferred.

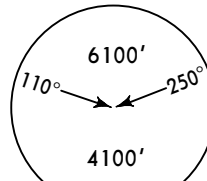
© JEPPESSEN, 2015. ALL RIGHTS RESERVED.

ZJSY/SYX
PHOENIX INTL

JEPPESSEN
11 SEP 15 **(10-2C)**

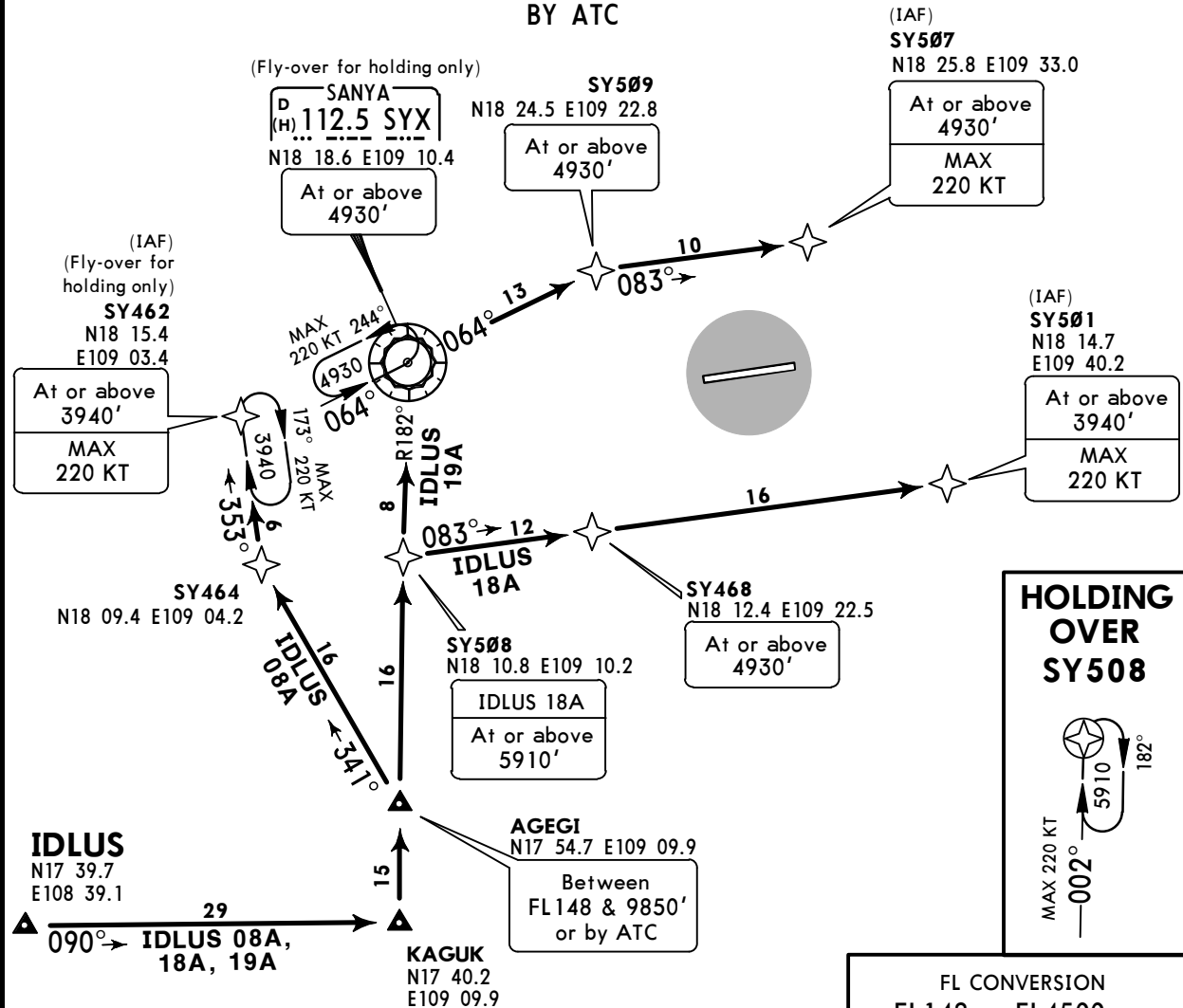
SANYA, PR OF CHINA
Eff 16 Sep 1600Z

RNAV STAR

ATIS 126.45	Alt Set: hPa Trans Level: FL118 Trans Alt: 9850' 10830' 1031 hPa or above 8860' 979 hPa or below	 <p>MSA ARP</p>
Apt Elev 95'	1. RNP 1 or RNAV 1. 2. GNSS required. 3. RADAR required (for RNAV 1).	

IDLUS 08A [IDL08A]
RWY 08 RNAV ARRIVAL
IDLUS 18A [IDL18A], IDLUS 19A [IDL19A]
RWY 26 RNAV ARRIVALS

BY ATC



Direct distance to
Phoenix Intl from:
SY462 21 NM
SY501 15 NM
SY507 11 NM

FL CONVERSION
FL148 FL4500m
FL118 FL3600m

FT/METER CONVERSION
QNH
10830' - 3300m
9850' - 3000m
8860' - 2700m
5910' - 1800m
4930' - 1500m
3940' - 1200m

STAR	RWY	ROUTING
IDLUS 08A	08	IDLUS - KAGUK - AGEGI (FL148-; 9850'+ or by ATC) - SY464 - SY462 (3940'+; K220-).
IDLUS 18A	26	IDLUS - KAGUK - AGEGI (FL148-; 9850'+ or by ATC) - SY508 (5910'+) - SY468 (4930'+) - SY501 (3940'+; K220-).
IDLUS 19A		IDLUS - KAGUK - AGEGI (FL148-; 9850'+ or by ATC) - SYX (4930'+) - SY509 (4930'+) - SY507 (4930'+; K220-).

CHANGES: RNAV STARs established; STARs transferred.

© JEPPESSEN, 2015. ALL RIGHTS RESERVED.

ZJSY/SYX
PHOENIX INTL

JEPPESEN
11 SEP 15 **(10-2D)**

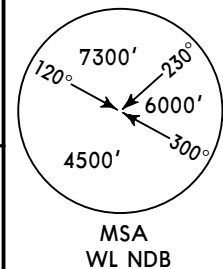
Eff 16 Sep 1600Z

SANYA, PR OF CHINA
STAR

ATIS
126.45

Apt Elev
95'

Alt Set: hPa
Trans Level: FL118
Trans Alt: 9850'
10830' 1031 hPa or above
8860' 979 hPa or below

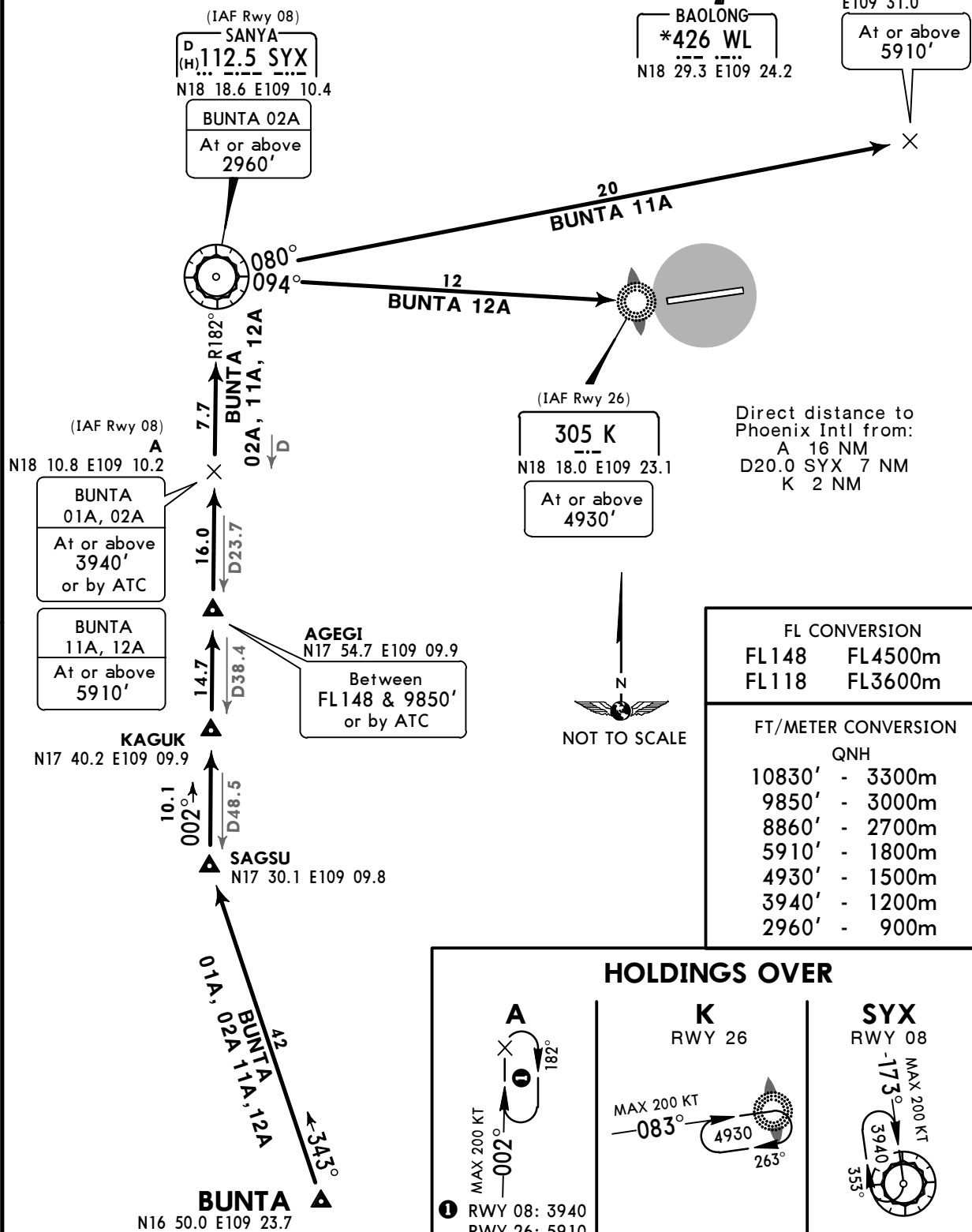


BUNTA 01A [BUN01A], BUNTA 02A [BUN02A]
RWY 08 ARRIVALS

BUNTA 11A [BUN11A], BUNTA 12A [BUN12A]
RWY 26 ARRIVALS

BY ATC

SPEED: INITIAL APPROACH MAX 190 KT



ZJSY/SYX
PHOENIX INTL

JEPPESEN
11 SEP 15 **10-2E**

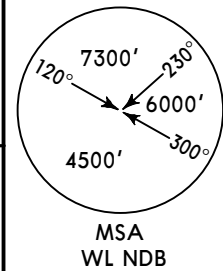
SANYA, PR OF CHINA
Eff 16 Sep 1600Z

STAR

ATIS
126.45

Apt Elev
95'

Alt Set: hPa
Trans Level: FL118
Trans Alt: 9850'
10830' 1031 hPa or above
8860' 979 hPa or below



DABUB 01A [DAB01A], DABUB 02A [DAB02A]
RWY 08 ARRIVALS

DABUB 11A [DAB11A], DABUB 12A [DAB12A]
RWY 26 ARRIVALS

BY ATC

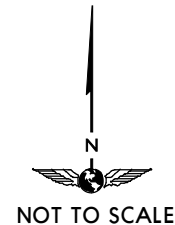
SPEED: INITIAL APPROACH MAX 190 KT

FL CONVERSION
FL118 FL3600m

FT/METER CONVERSION

QNH	
10830'	- 3300m
9850'	- 3000m
8860'	- 2700m
7880'	- 2400m
5910'	- 1800m
4930'	- 1500m
3940'	- 1200m

DABUB
D74.1 IKK
N19 31.2 E109 11.6
(SYX R-002/ D72.7)

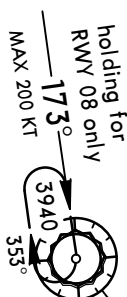


Direct distance to
Phoenix Intl from:
K 2 NM
D8.0 SYX 9 NM
D21.7 SYX 11 NM

BAOLONG
*426 WL
N18 29.3 E109 24.2
At or above
7880'

(IAF Rwy 26)
D21.7 SYX
N18 26.5
E109 31.5
At or above
5910'

(IAF Rwy 08)
D8.0 SYX
N18 23.6 E109 16.8
At or above
4930'

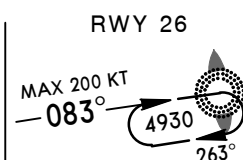
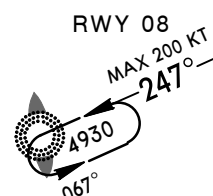
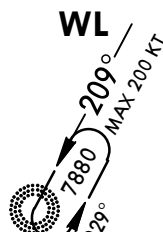


(IAF)
305 K
N18 18.0 E109 23.1
At or above
4930'

ILS DME
D (109.5) IKK
N18 18.1 E109 23.9

SANYA
D (H) 112.5 SYX
N18 18.6 E109 10.4

HOLDINGS OVER



ZJSY/SYX
PHOENIX INTL

JEPPesen
11 SEP 15 10-2F

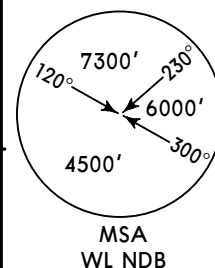
Eff 16 Sep 1600Z

SANYA, PR OF CHINA
STAR

ATIS
126.45

Apt Elev
95'

Alt Set: hPa
Trans Level: FL118
Trans Alt: 9850'
10830' 1031 hPa or above
8860' 979 hPa or below



GIVIL 01A [GIV01A], GIVIL 02A [GIV02A]
RWY 08 ARRIVALS

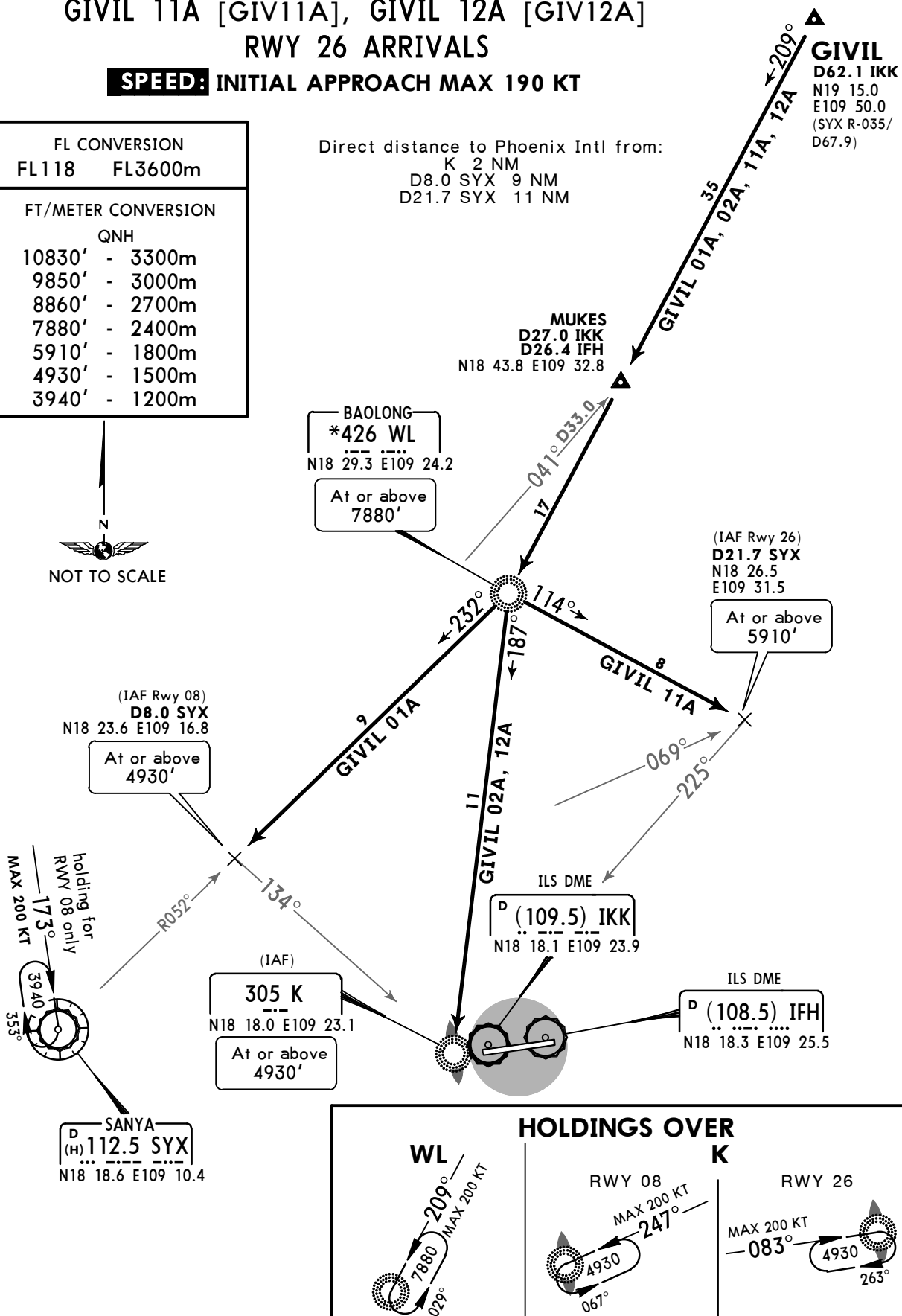
GIVIL 11A [GIV11A], GIVIL 12A [GIV12A]
RWY 26 ARRIVALS

SPEED: INITIAL APPROACH MAX 190 KT

FL CONVERSION
FL118 FL3600m

FT/METER CONVERSION	
QNH	
10830'	- 3300m
9850'	- 3000m
8860'	- 2700m
7880'	- 2400m
5910'	- 1800m
4930'	- 1500m
3940'	- 1200m

Direct distance to Phoenix Intl from:
K 2 NM
D8.0 SYX 9 NM
D21.7 SYX 11 NM



ZJSY/SYX
PHOENIX INTL

JEPPESSEN
11 SEP 15 10-2G Ef

SANYA, PR OF CHINA

STAR

ATIS
126.45

Apt Elev
95'

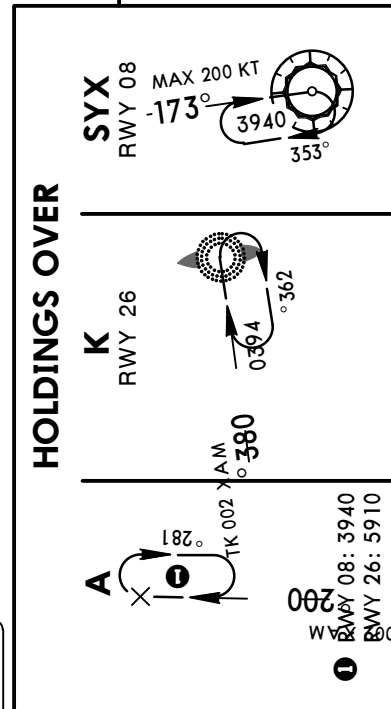
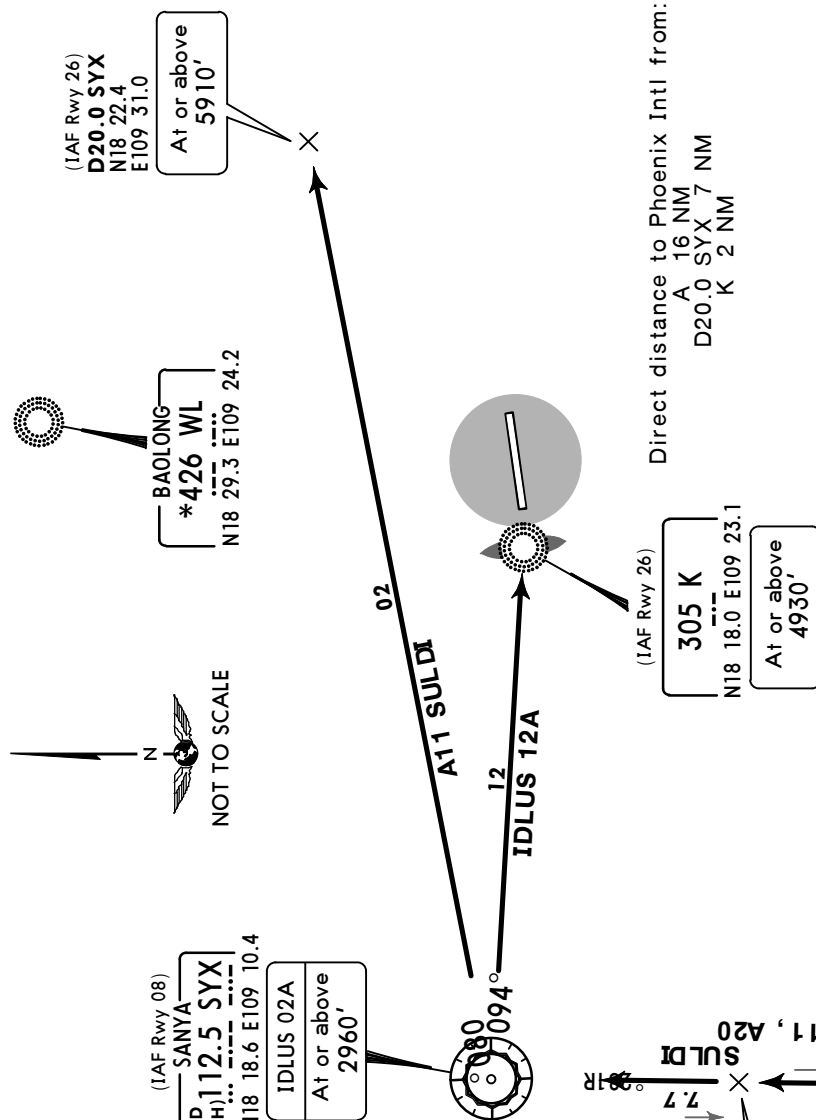
Alt Set: hPa
Trans Level: FL118
Trans Alt: 9850'
10830' 1031 hPa or above
8860' 979 hPa or below

IDLUS 01A [IDLØ1A] , IDLUS 02A [IDLØ2A]
RWY 08 ARRIVALS

**IDLUS 11A [IDL11A] , IDLUS 12A [IDL12A]
RWY 26 ARRIVALS**

BY ATC

SPEED: INITIAL APPROACH MAX 190 KT



FL CONVERSION

FT/METER CONVERSION

QNH

10830'	-	3300m
9850'	-	3000m
8860'	-	2700m
5910'	-	1800m
4930'	-	1500m
3940'	-	1200m
2960'	-	900m

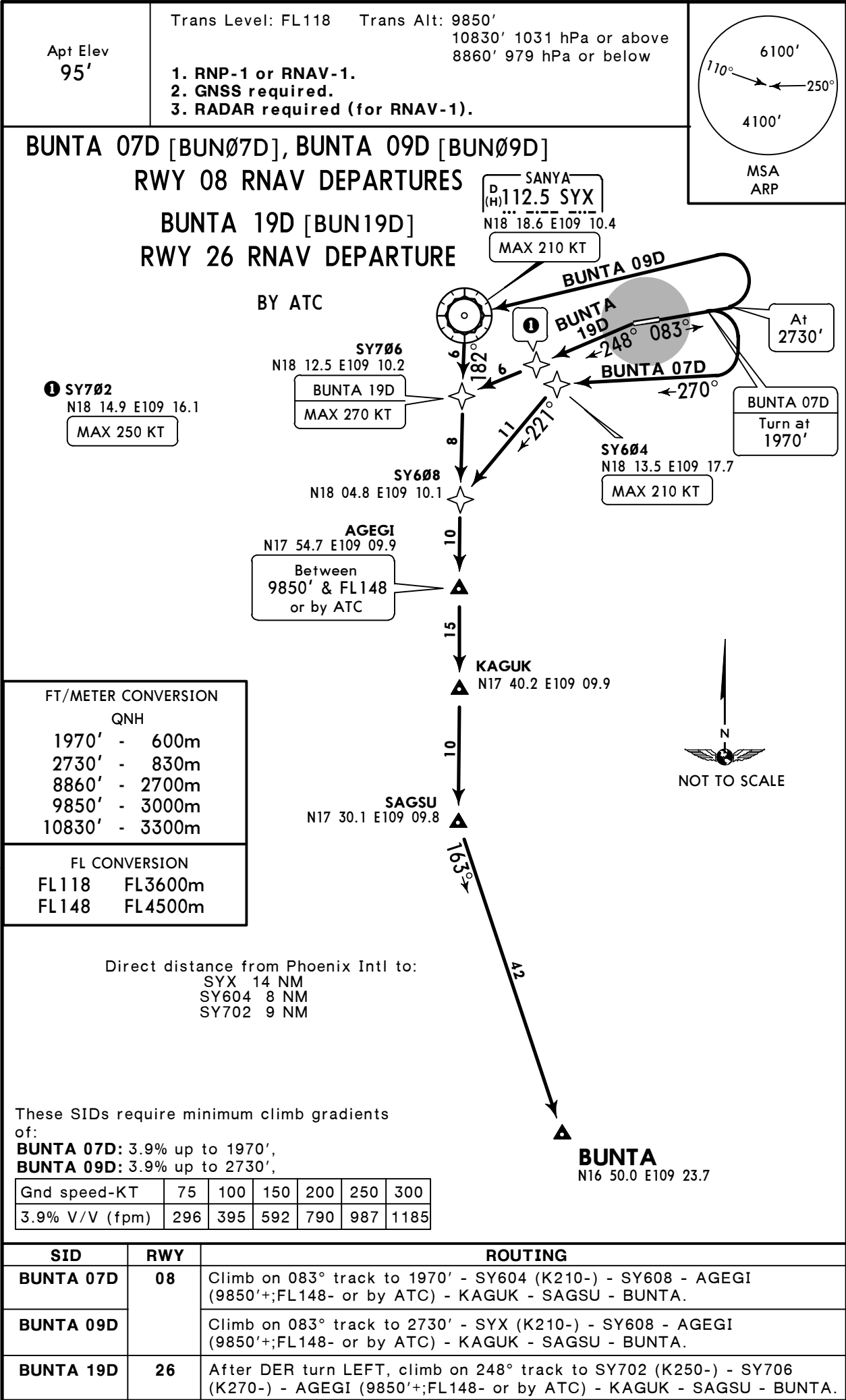
ZJSY/SYX
PHOENIX INTL

JEPPesen
11 SEP 15 10-3

Eff 16 Sep 1600Z

SANYA, PR OF CHINA

RNAV SID



ZJSY/SYX
PHOENIX INTL

JEPPESEN
11 SEP 15 10-3A

Eff 16 Sep 1600Z

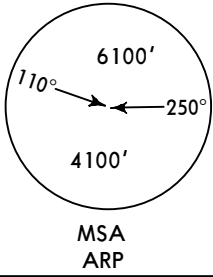
SANYA, PR OF CHINA

RNAV SID

Apt Elev
95'

Trans Level: FL118 Trans Alt: 9850'
10830' 1031 hPa or above
8860' 979 hPa or below

1. RNP-1 or RNAV-1.
2. GNSS required.
3. RADAR required (for RNAV-1).



DABUB 09D [DAB09D]
RWY 08 RNAV DEPARTURE

DABUB 19D [DAB19D]
RWY 26 RNAV DEPARTURE

BY ATC

DABUB
N19 31.2 E109 11.6

Direct distance from Phoenix Intl to:
SY702 9 NM
WL 11 NM



FT/METER CONVERSION
QNH

2730' - 830m
3290' - 1000m
8860' - 2700m
9850' - 3000m
10830' - 3300m

FL CONVERSION
FL118 FL3600m

BAOLONG
*426 WL
N18 29.3 E109 24.2

DABUB 09D
MAX 210 KT

DABUB 19D
MAX 270 KT

These SIDs require minimum climb gradients
of:

DABUB 09D: 3.9% up to 2730',
DABUB 19D: 3.7% up to 3290'.

Gnd speed-KT	75	100	150	200	250	300
3.7% V/V (fpm)	281	375	562	749	937	1124
3.9% V/V (fpm)	296	395	592	790	987	1185

SY704
N18 22.2 E109 12.1

SY702
N18 14.9 E109 16.1
MAX 250 KT

At
2730'

SID	RWY	ROUTING
DABUB 09D	08	Climb on 083° track to 2730' - WL (K210-) - DABUB.
DABUB 19D	26	After DER turn LEFT, climb on 248° track to SY702 (K250-) - SY704 - WL (K270-) - DABUB.

ZJSY/SYX
PHOENIX INTL

JEPPesen
11 SEP 15 10-3B

Eff 16 Sep 1600Z

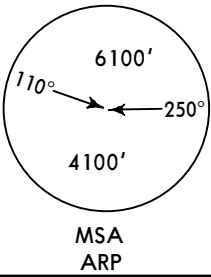
SANYA, PR OF CHINA

RNAV SID

Apt Elev
95'

Trans Level: FL118 Trans Alt: 9850'
10830' 1031 hPa or above
8860' 979 hPa or below

1. RNP-1 or RNAV-1.
2. GNSS required.
3. RADAR required (for RNAV-1).

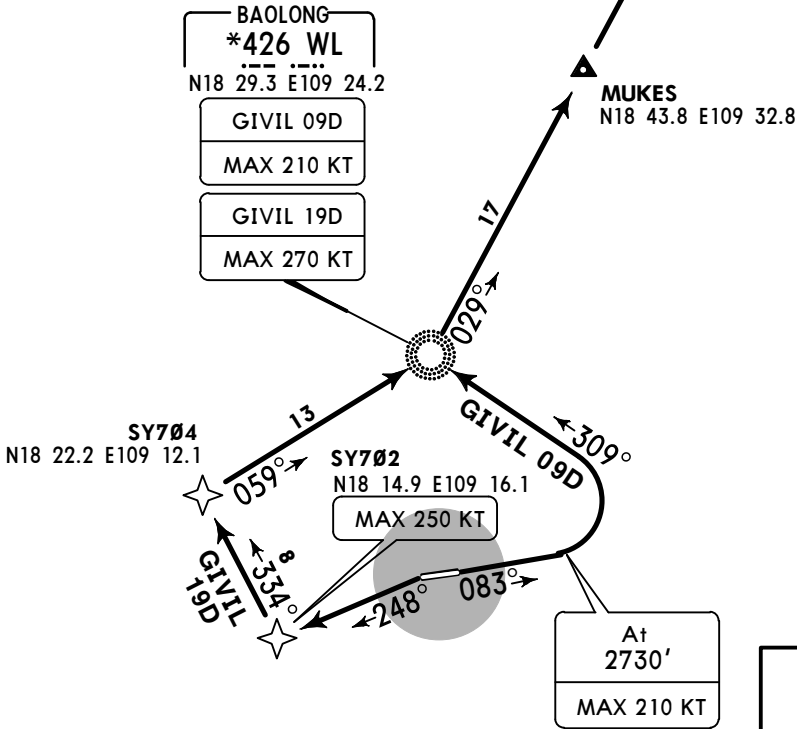


GIVIL 09D[GIVØ9D]
RWY 08 RNAV DEPARTURE

GIVIL 19D[GIV19D]
RWY 26 RNAV DEPARTURE

GIVIL
N19 15.0 E109 50.0

Direct distance from Phoenix Intl to:
SY702 9 NM
WL 11 NM



These SIDs require minimum climb gradients
of:

GIVIL 09D: 3.9% up to 2730',
GIVIL 19D: 3.7% up to 3290'.

Gnd speed-KT	75	100	150	200	250	300
3.7% V/V (fpm)	281	375	562	749	937	1124
3.9% V/V (fpm)	296	395	592	790	987	1185

FT/METER CONVERSION	
QNH	
2730'	830m
3290'	1000m
8860'	2700m
9850'	3000m
10830'	3300m

FL CONVERSION	
FL118	FL3600m

SID	RWY	ROUTING
GIVIL 09D	08	Climb on 083° track to 2730' (K210-) - WL (K210-) - MUKES - GIVIL.
GIVIL 19D	26	After DER turn LEFT, climb on 248° track to SY702 (K250-) - SY704 - WL (K270-) - MUKES - GIVIL.

ZJSY/SYX
PHOENIX INTL

JEPPesen
11 SEP 15 10-3C

Eff 16 Sep 1600Z

SANYA, PR OF CHINA
RNAV SID

Apt Elev
95'

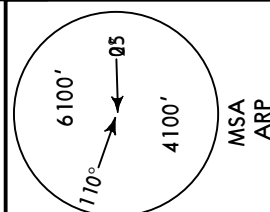
Trans Level: FL118 Trans Alt: 9850'
10830' 1031 hPa or above
8860' 979 hPa or below

1. RNP-1 or RNAV-1.
2. GNSS required.
3. RADAR required (for RNAV-1).

IDLUS 07D [IDL07D] , IDLUS 08D [IDL08D]
IDLUS 09D [IDL09D]

RWY 08 RNAV DEPARTURES

BY ATC



SY604
N18 13.5 E109 17.7
MAX 210 KT

MAX 210 KT

SANYA
D112.5 SYX
(H) N18 18.6 E109 10.4
MAX 210 KT

At 2730'
IDLUS 07D
IDLUS 08D
Turn at
1970'

VEGDO
N18 11.5 E109 17.1
MAX 210 KT

FT/METER CONVERSION

QNH
1970' - 600m
2730' - 830m
8860' - 2700m
9850' - 3000m
10830' - 3300m

FL CONVERSION
FL118 FL3600m
FL148 FL4500m

These SIDs require a minimum climb gradient

of:

IDLUS 07D, 08D: 3.9% up to 1970',

IDLUS 09D: 3.9% up to 2730'.

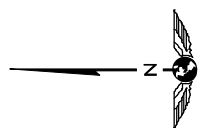
Gnd speed-KT	75	100	150	200	250	300
3.9% V/V (fpm)	296	395	592	790	987	1185

Direct distance from Phoenix Intl to:

SYX 14 NM

SY604 8 NM

VEGDO 10 NM



NOT TO SCALE

IDLUS
N17 39.7 E108 39.1

ATALA
N17 40.3 E109 17.3

KAGUK
N17 40.2 E109 09.9

ROUTING

IDLUS 07D Climb on 083° track to 1970' - SY604 (K210-) - SY608 - AGEGI (9850'+; FL148- or by ATC) - KAGUK - IDLUS.

IDLUS 08D Climb on 083° track to 1970' - VEGDO (K210-) - ATALA - KAGUK - IDLUS.

IDLUS 09D Climb on 083° track to 2730' - SYX (K210-) - SY608 - AGEGI (9850'+; FL148- or by ATC) - KAGUK - IDLUS.

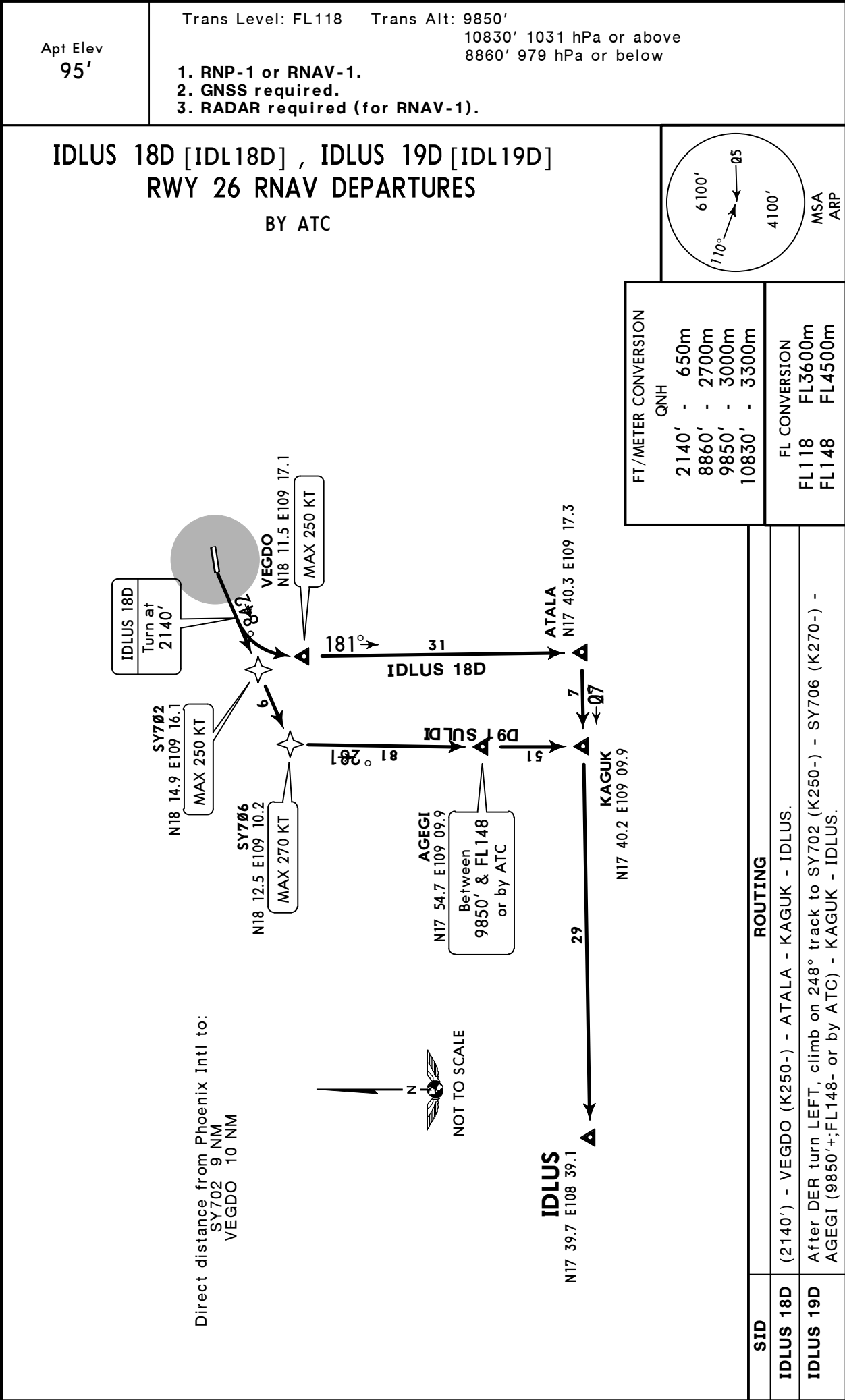
ZJSY/SYX
PHOENIX INTL

JEPPESEN
11 SEP 15 10-3D

Eff 16 Sep 1600Z

SANYA, PR OF CHINA

RNAV SID



ZJSY/SYX
PHOENIX INTL

JEPPESEN
11 SEP 15 **10-3E**

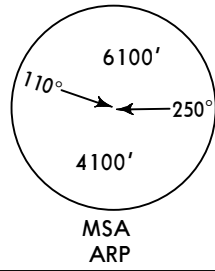
Eff 16 Sep 1600Z

SANYA, PR OF CHINA
RNAV SID

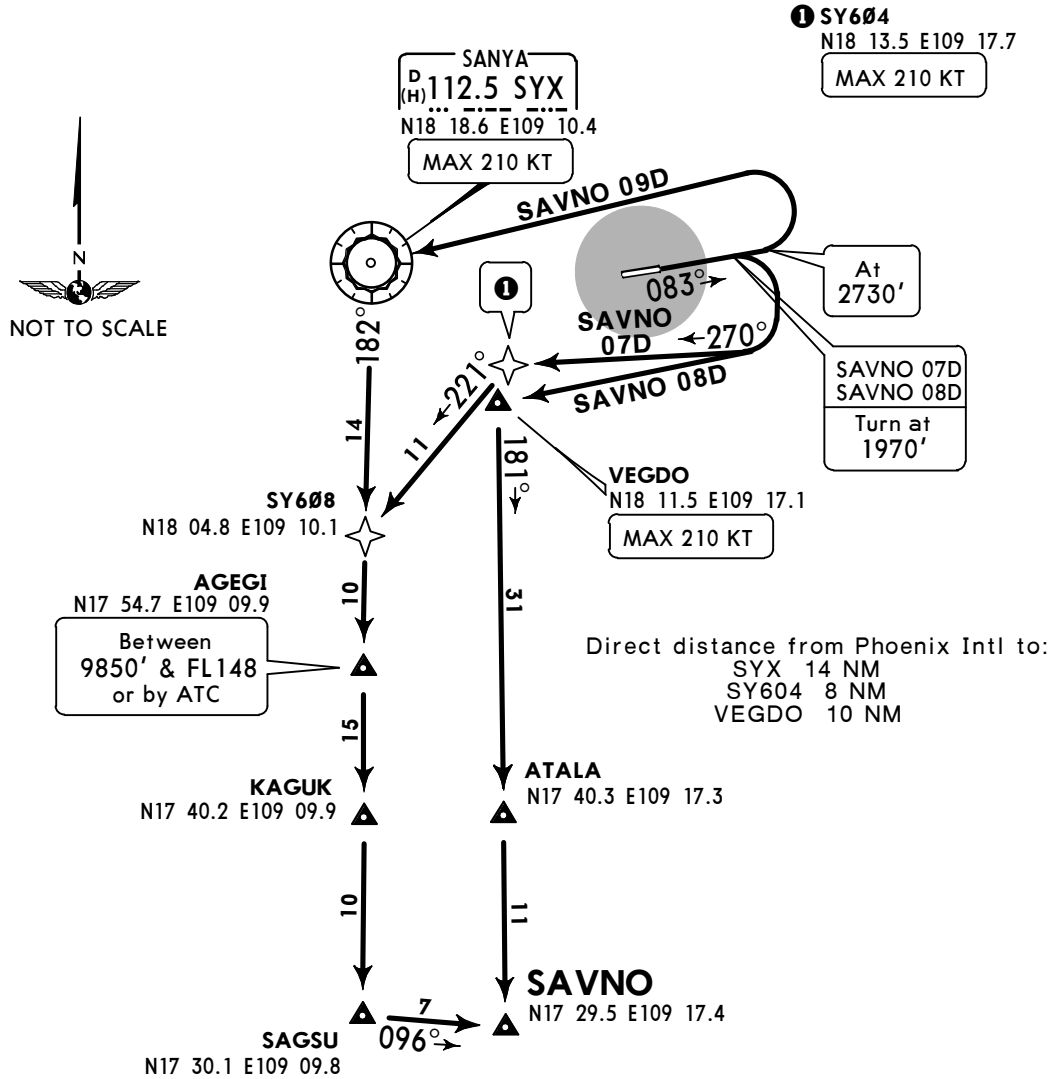
Apt Elev
95'

Trans Level: FL118 Trans Alt: 9850'
10830' 1031 hPa or above
8860' 979 hPa or below

1. RNP-1 or RNAV-1.
2. GNSS required.
3. RADAR required (for RNAV-1).



**SAVNO 07D [SAVØ7D], SAVNO 08D [SAVØ8D]
SAVNO 09D [SAVØ9D]
RWY 08 RNAV DEPARTURES
BY ATC**



These SIDs require a minimum climb gradient of:
SAVNO 07D, 08D: 3.9% up to 1970',
SAVNO 09D: 3.9% up to 2730'.

Gnd speed-KT	75	100	150	200	250	300
3.9% V/V (fpm)	296	395	592	790	987	1185

FT/METER CONVERSION	
QNH	
1970'	600m
2730'	830m
8860'	2700m
9850'	3000m
10830'	3300m

FL CONVERSION	
FL118	FL3600m
FL148	FL4500m

SID	ROUTING
SAVNO 07D	Climb on 083° track to 1970' - SY604 (K210-) - SY608 - AGEGI (9850'+;FL148- or by ATC) - KAGUK - SAGSU - SAVNO.
SAVNO 08D	Climb on 083° track to 1970' - VEGDO (K210-) - ATALA - SAVNO.
SAVNO 09D	Climb on 083° track to 2730' - SYX (K210-) - SY608 - AGEGI (9850'+;FL148- or by ATC) - KAGUK - SAGSU - SAVNO.

ZJSY/SYX
PHOENIX INTL

JEPPESEN
11 SEP 15 10-3F

Eff 16 Sep 1600Z

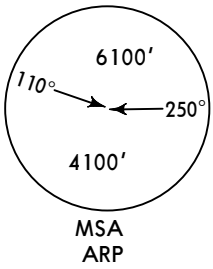
SANYA, PR OF CHINA

RNAV SID

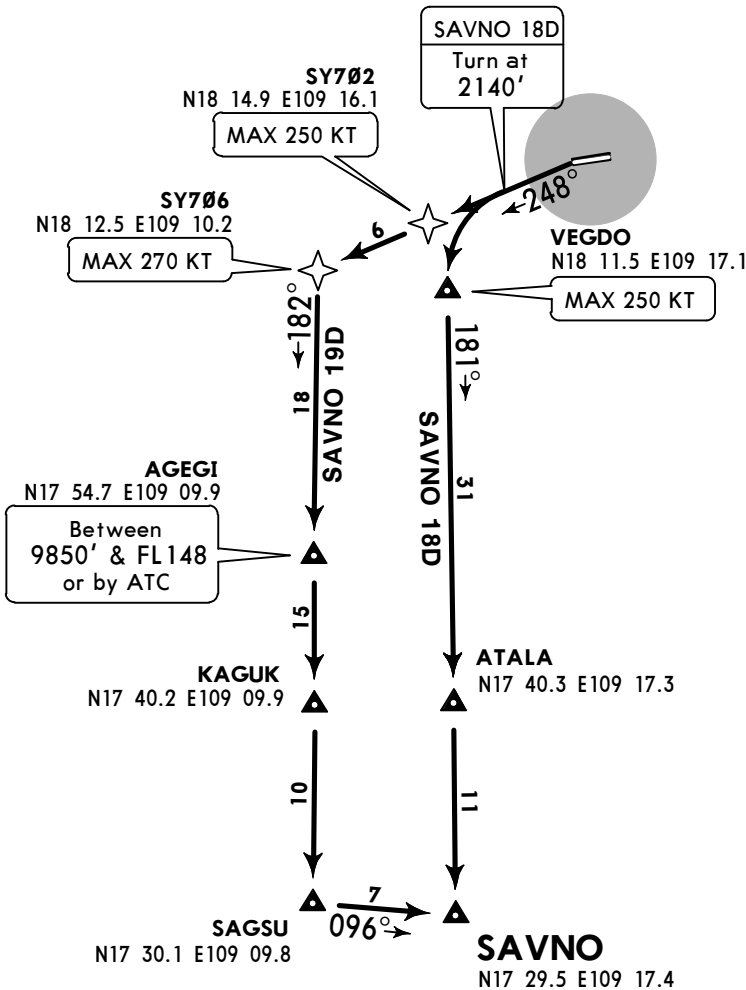
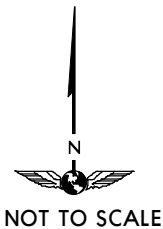
Apt Elev
95'

Trans Level: FL118 Trans Alt: 9850'
10830' 1031 hPa or above
8860' 979 hPa or below

1. RNP-1 or RNAV-1.
2. GNSS required.
3. RADAR required (for RNAV-1).



SAVNO 18D [SAV18D], SAVNO 19D [SAV19D]
RWY 26 RNAV DEPARTURES
BY ATC



Direct distance from Phoenix Intl to:
SY702 9 NM
VEGDO 10 NM

FT/METER CONVERSION
QNH

2140' - 650m
8860' - 2700m
9850' - 3000m
10830' - 3300m

FL CONVERSION

FL118 FL3600m
FL148 FL4500m

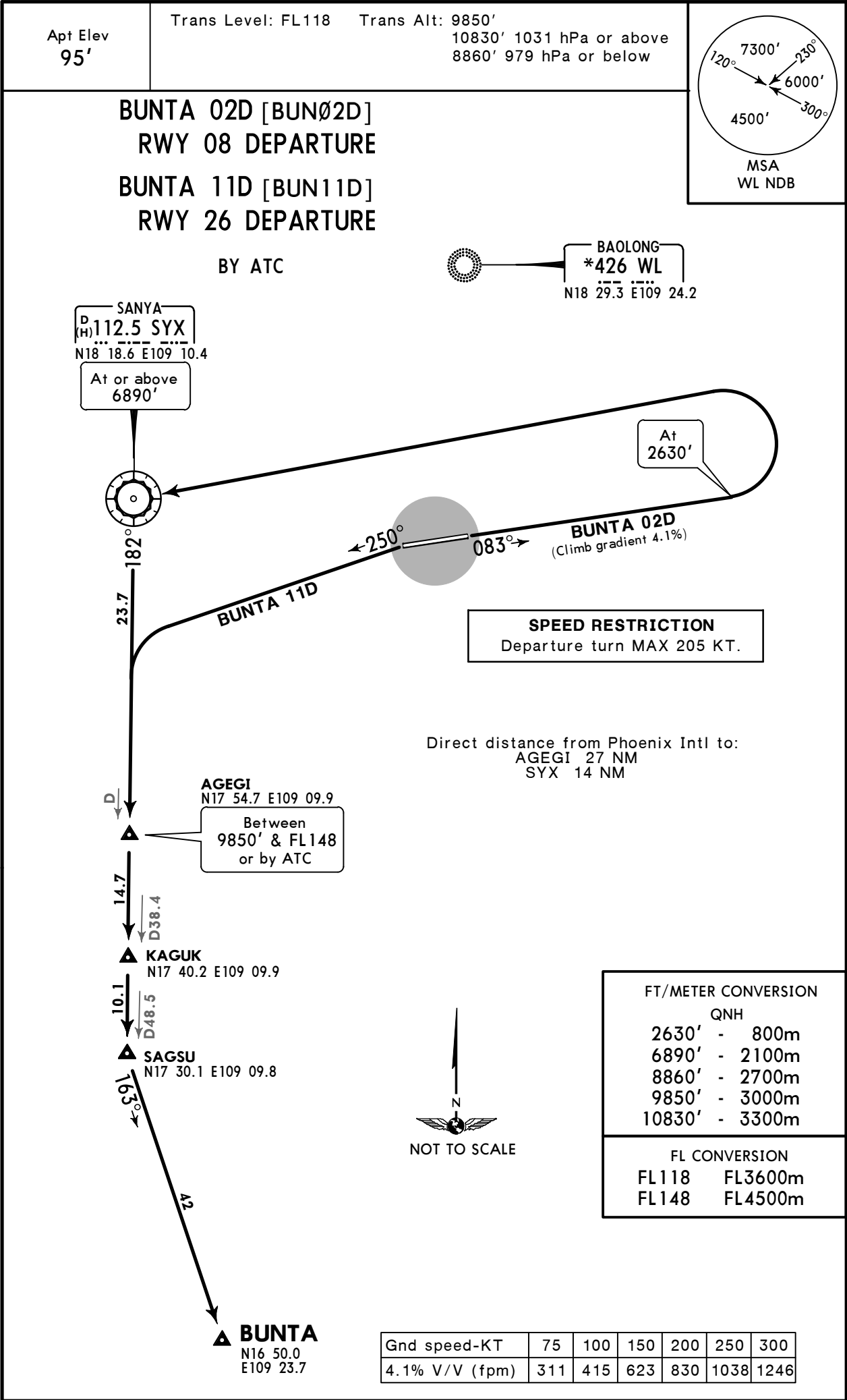
SID	ROUTING
SAVNO 18D	(2140') - VEGDO (K250-) - ATALA - SAVNO.
SAVNO 19D	After DER turn LEFT, climb on 248° track to SY702 (K250-) - SY706 (K270-) - AGEGI (9850'+;FL148- or by ATC) - KAGUK - SAGSU - SAVNO.

ZJSY/SYX
PHOENIX INTL

JEPPESEN
11 SEP 15 10-3G

SANYA, PR OF CHINA

SID



ZJSY/SYX
PHOENIX INTL

JEPPESEN
11 SEP 15 **(10-3H)**

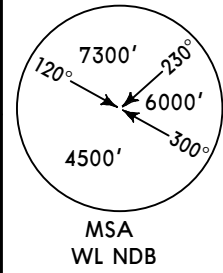
SANYA, PR OF CHINA

Eff 16 Sep 1600Z

SID

Apt Elev
95'

Trans Level: FL118 Trans Alt: 9850'
10830' 1031 hPa or above
8860' 979 hPa or below

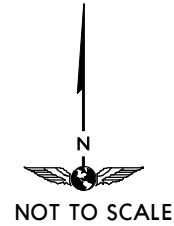


DABUB 01D [DAB01D] , DABUB 02D [DAB02D]
RWY 08 DEPARTURES

DABUB 11D [DAB11D] , DABUB 12D [DAB12D]
RWY 26 DEPARTURES

BY ATC

DABUB
D74.1 IKK
N19 31.2 E109 11.6
(SYX R002/D72.7)



FT/METER CONVERSION

QNH	
1970'	- 600m
2140'	- 650m
2630'	- 800m
3940'	- 1200m
6890'	- 2100m
8860'	- 2700m
9850'	- 3000m
10830'	- 3300m

FL CONVERSION
FL118 FL3600m

Direct distance to
Phoenix Intl from:
K 2 NM
WL 11 NM

SANYA
D112.5 SYX
N18 18.6 E109 10.4



305 K
N18 18.0 E109 23.1
At or above
3940'

ILS DME
D(109.5) IKK
N18 18.1 E109 23.9

DABUB 01D
Turn at
1970'

At
2140'

DABUB 11D
DABUB 12D

DABUB 01D, 12D

DABUB 01D

DABUB 02D

At
2630'

(Climb
gradient 4.1%)

SPEED RESTRICTION
Departure turn MAX 205 KT.

Gnd speed-KT	75	100	150	200	250	300
4.1% V/V (fpm)	311	415	623	830	1038	1246

ZJSY/SYX
PHOENIX INTL

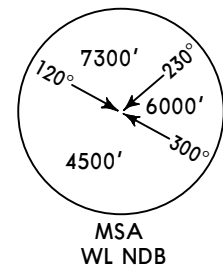
JEPPESEN
11 SEP 15 **(10-3J)**

SANYA, PR OF CHINA
Eff 16 Sep 1600Z

SID

Apt Elev
95'

Trans Level: FL118 Trans Alt: 9850'
10830' 1031 hPa or above
8860' 979 hPa or below



GIVIL 01D[GIV01D] , GIVIL 02D[GIV02D]
RWY 08 DEPARTURES

GIVIL 11D[GIV11D] , GIVIL 12D[GIV12D]
RWY 26 DEPARTURES

GIVIL
D62.1 IKK
N19 15.0
E109 50.0

FT/METER CONVERSION

QNH	
1970'	- 600m
2140'	- 650m
2630'	- 800m
3940'	- 1200m
6890'	- 2100m
8860'	- 2700m
9850'	- 3000m
10830'	- 3300m

FL CONVERSION
FL118 FL3600m

MUKES
D27.0 IKK
D26.4 IFH
N18 43.8 E109 32.8

Direct distance to
Phoenix Intl from:
K 2 NM
WL 11 NM

BAOLONG
***426 WL**
N18 29.3 E109 24.2
At or above
6890'

SPEED RESTRICTION

Departure turn MAX 205 KT.

SANYA
D(H)112.5 SYX
N18 18.6 E109 10.4

305 K
N18 18.0 E109 23.1
At or above
3940'

GIVIL 01D
Turn at
1970'

At
2140'

GIVIL 11D ← 250°

GIVIL 12D

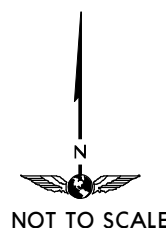
ILS DME
D (109.5) IKK
N18 18.1 E109 23.9

ILS DME
D (108.5) IFH
N18 18.3 E109 25.5

GIVIL 01D
(Climb
gradient 4.1%)

GIVIL 02D

At
2630'



Gnd speed-KT	75	100	150	200	250	300
4.1% V/V (fpm)	311	415	623	830	1038	1246

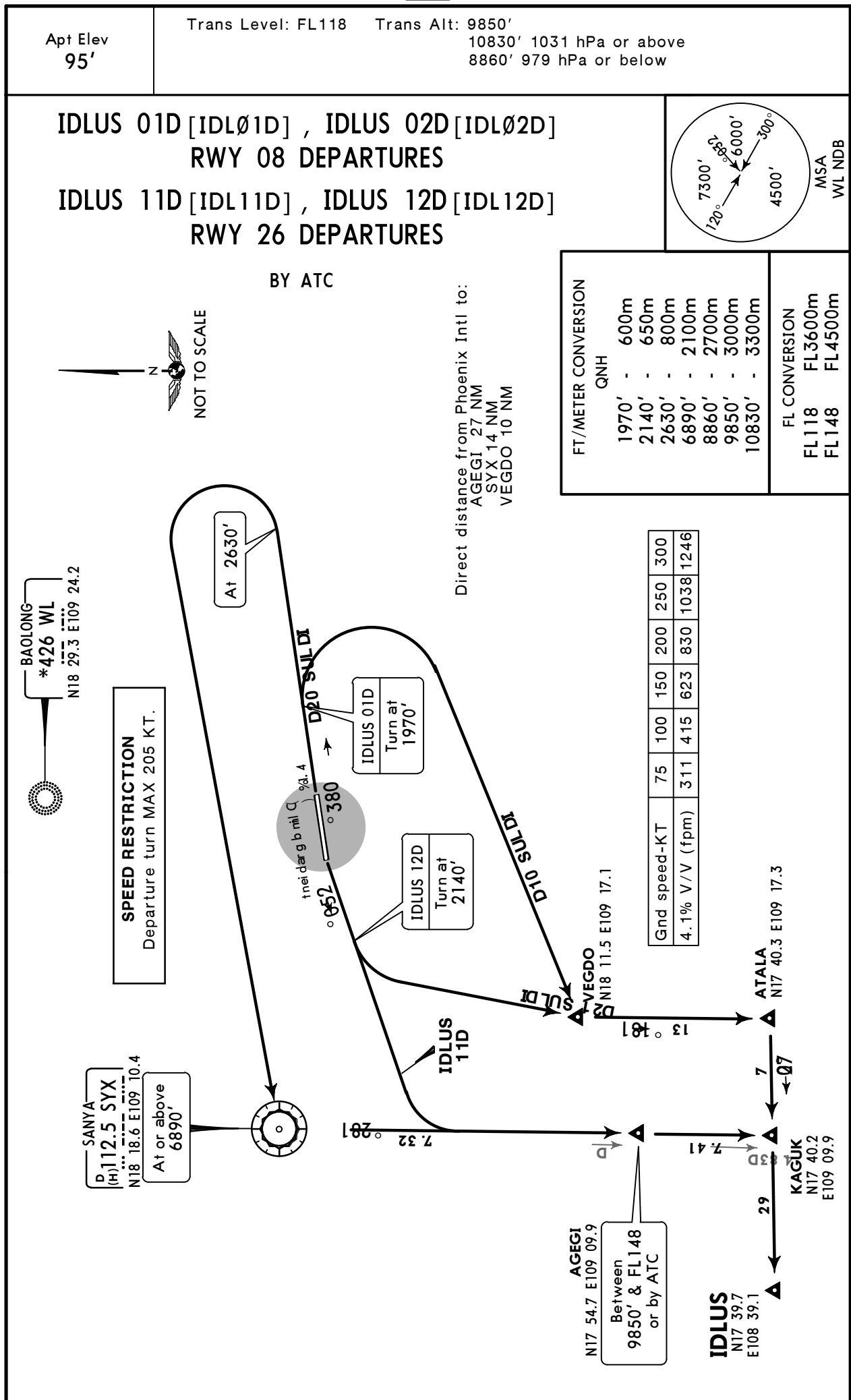
ZJSY/SYX
PHOENIX INTL

11 SEP 15 10-3K

Eff 16 Sep 1600Z

SANYA, PR OF CHINA

SID



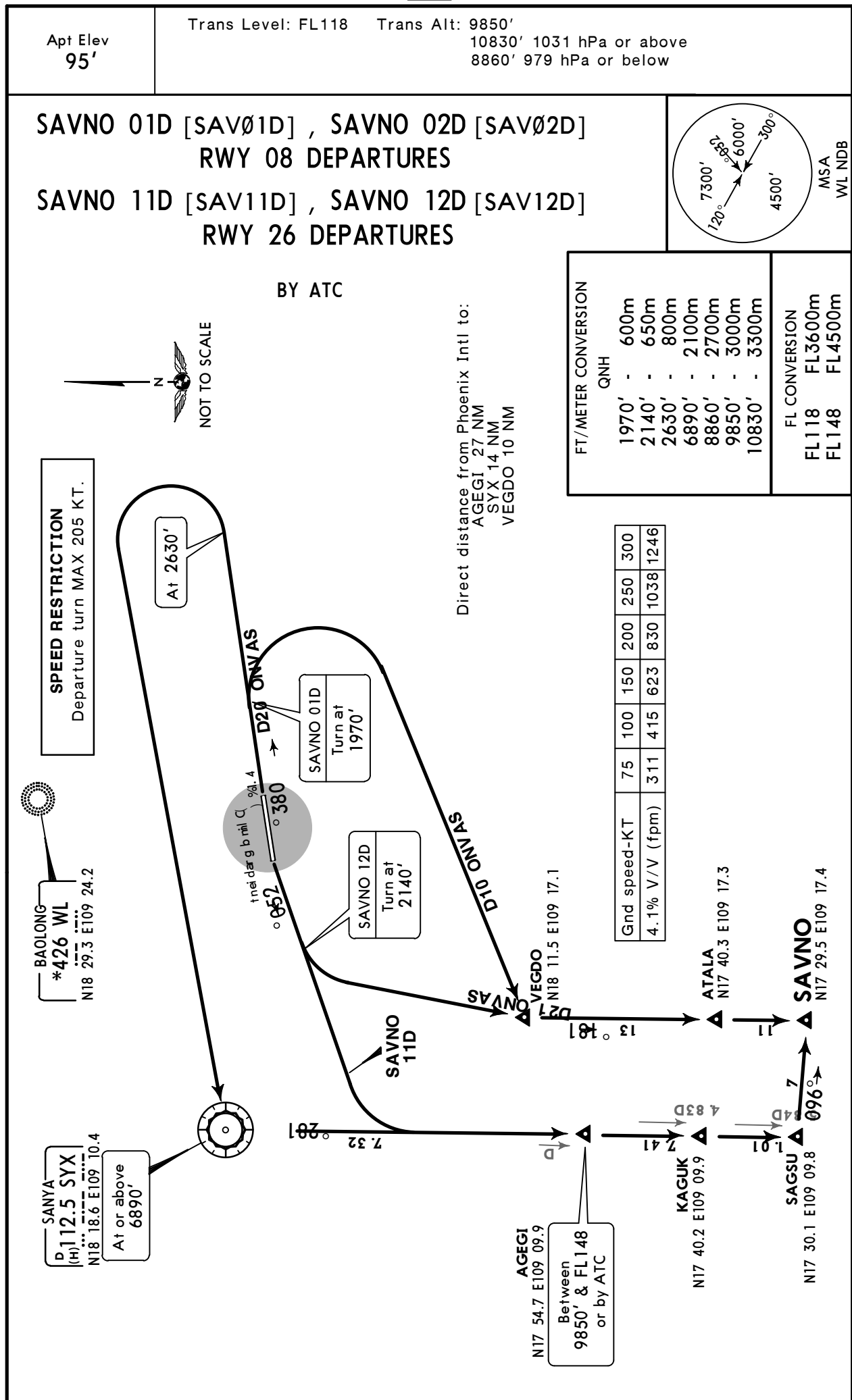
CHANGES: New chart (SIDs transferred and revised).

© JEPPESEN, 2015. ALL RIGHTS RESERVED.

ZJSY/SYX
PHOENIX INTL

JEPPESEN
11 SEP 15 10-3L Ef

SANYA, PR OF CHINA

SID

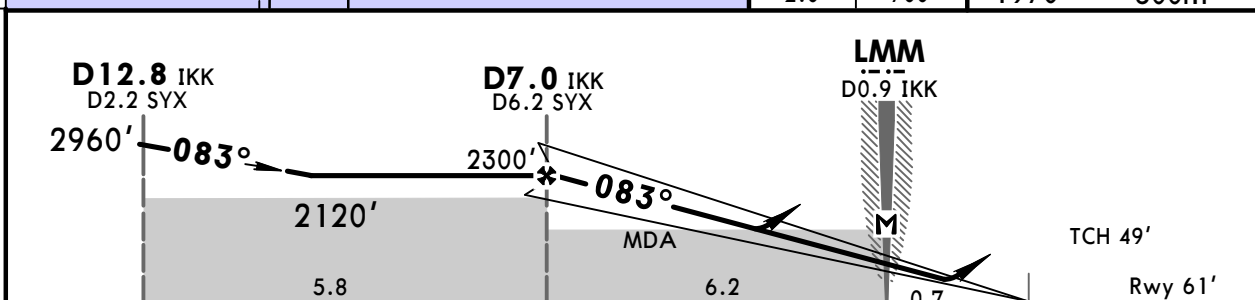
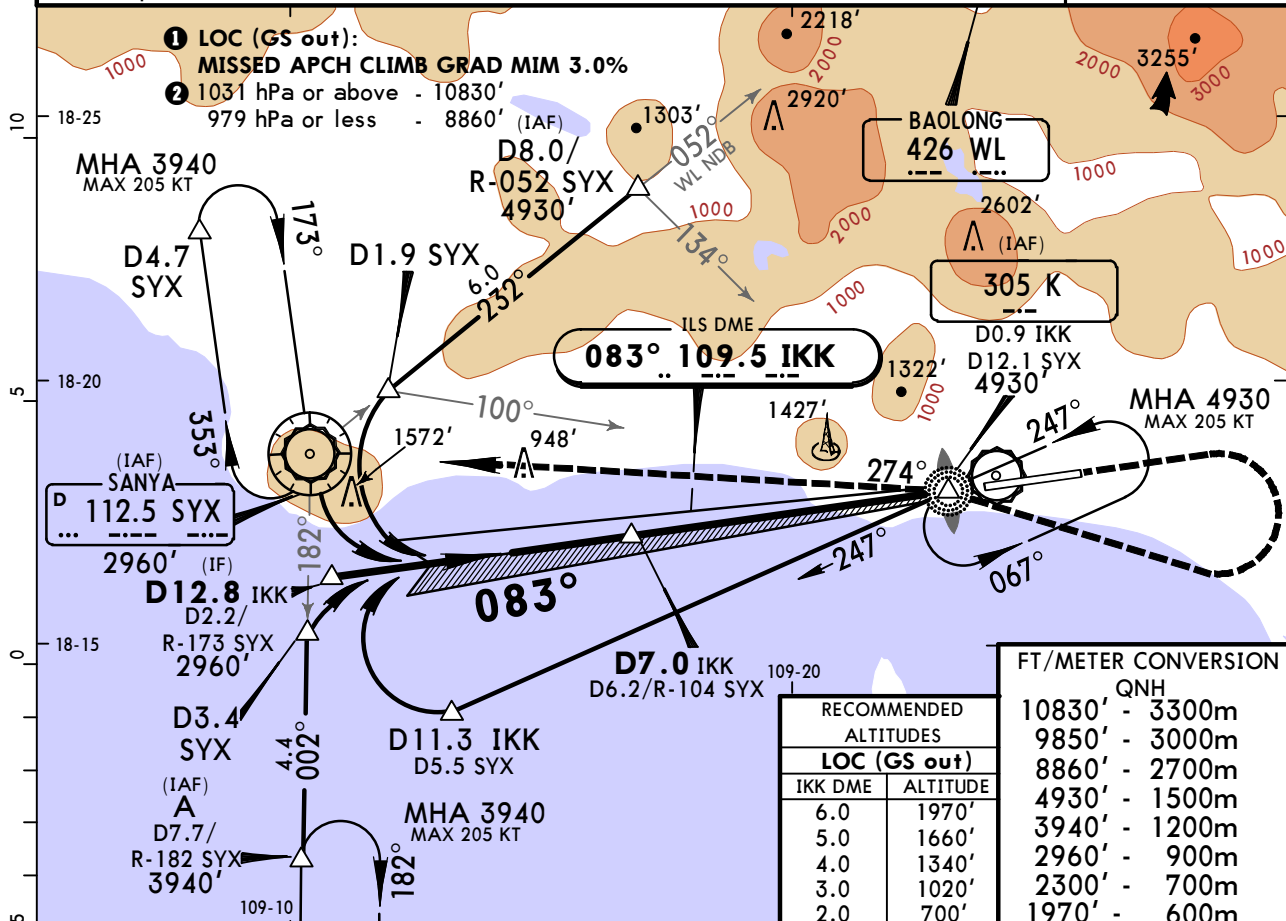
ZJSY/SYX
PHOENIX INTL

11 SEP 15
Eff 16 Sep 1600Z (11-1)

SANYA, PR OF CHINA
ILS DME Z Rwy 08

BRIEFING STRIP

ATIS 126.450		SANYA Approach(R) 125.550		FENGHUANG Tower 118.150		*Ground 121.7	
LOC IKK 109.5	Final Apch Crs 083°	GS D7.0 IKK 2300'(2239')	ILS DA(H) Refer to Minimums	Apt Elev 95' Rwy 61'			
MISSED APCH: Climb STRAIGHT AHEAD to 1970', then turn RIGHT to K NDB at 3940', then inbound to VOR on track 274°, or as directed. MAX 190 KT.							
Alt Set: hPa		Rwy Elev: 2 hPa		Trans level: FL 118		Trans alt: 9850' ②	
Initial apch MAX 190 KT.						MSA WL NDB	



Gnd speed-Kts	70	90	100	120	140	160	<div><div></div><div>HIALS</div><div></div><div>PAPI</div></div>	<div>190 KT MAX</div>	<div>1970' ↑</div>
ILS GS or	372	478	531	637	743	849			
LOC Descent Angle	3.00°								
MAP at LMM/D0.9 IKK/D12.1 SYX									

Standard				STRAIGHT-IN LANDING RWY 08				CIRCLE-TO-LAND					
Missed apch climb grad mim 3.0%				ILS		Missed apch climb grad mim 2.5%		LOC (GS out) Missed apch climb grad mim 3.0%		Not authorized North of runway			
DA(H) B: 291' (230') CD: 308' (247')				1		DA(H) AB: 406' (345') CD: 422' (361')		CDFA MDA(H) 640' (579')					
FULL		Limited		ALS out		FULL/Limited		ALS out		Max Kts		MDA(H) _____ VIS _____	
A				1200m				1500m		100			
B		RVR 550m		RVR 750m		1200m		2500m		135		1630'(1535') 5000m	
C		VIS 800m		VIS 800m						180			
D				1300m						205			
1 DA(H) CAT A: 275'(214').													

CHANGES: Missed approach. Procedure.

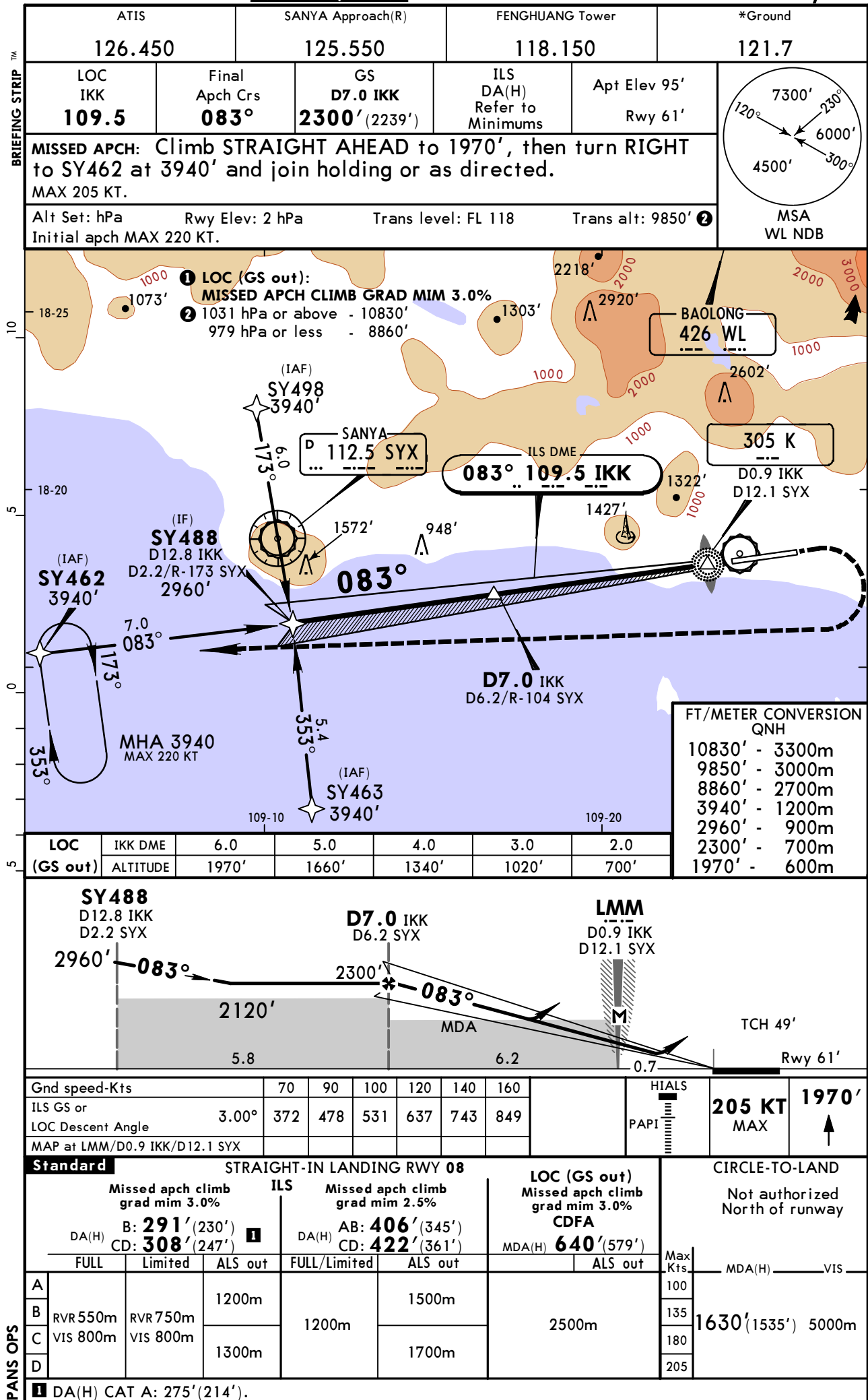
© JEPPESEN, 1999, 2015. ALL RIGHTS RESERVED.

ZJSY/SYX
PHOENIX INTL

11 SEP 15
Eff 16 Sep 1600Z

11-2

SANYA, PR OF CHINA
● RNAV ILS DME Y Rwy 08



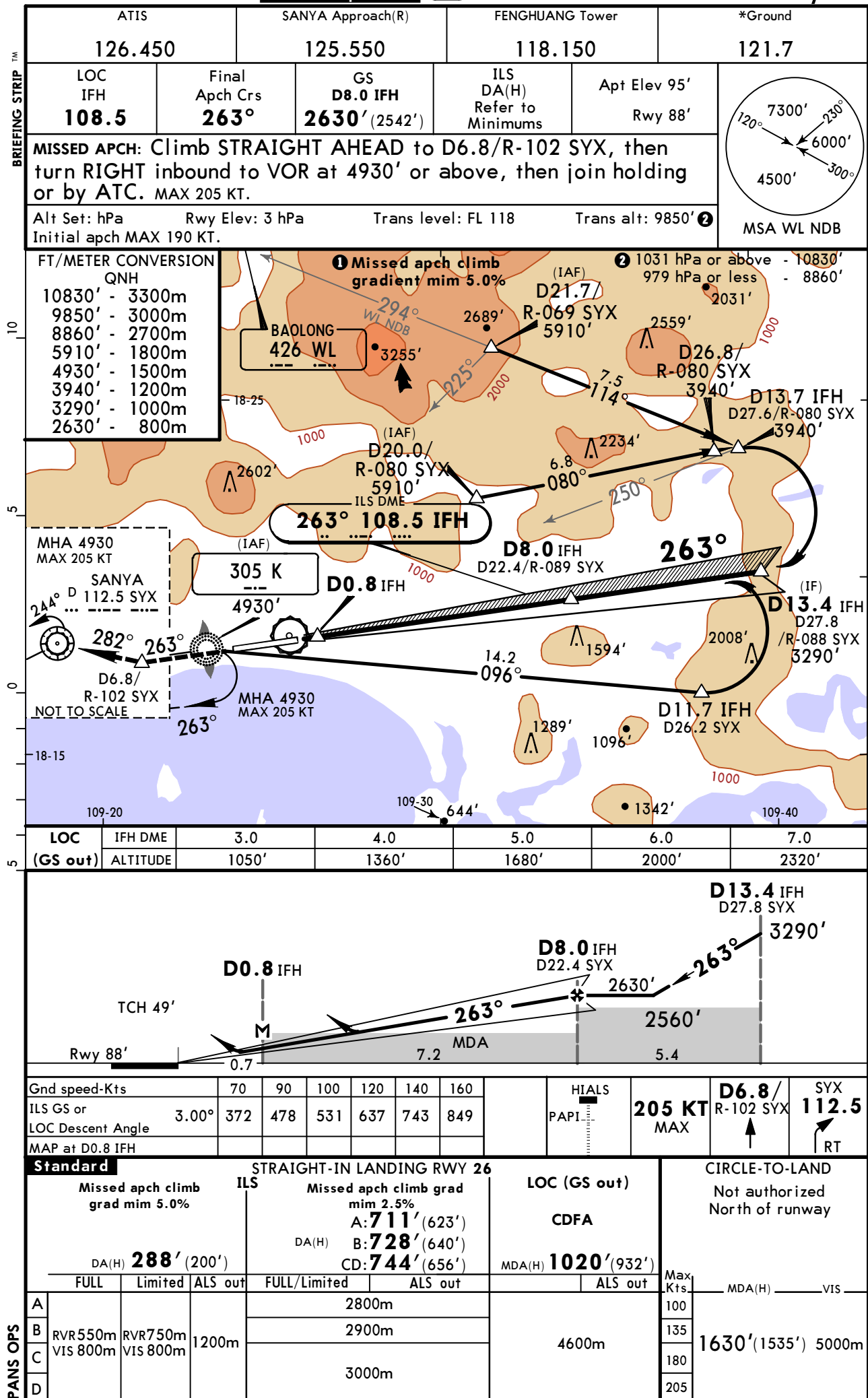
CHANGES: New procedure.

© JEPPESEN, 2015. ALL RIGHTS RESERVED.

ZJSY/SYX
PHOENIX INTL

JEPPesen
11 SEP 15
Eff 16 Sep 1600Z (11-3)

SANYA, PR OF CHINA
● ILS DME Z Rwy 26



ZJSY/SYX
PHOENIX INTL

JEPPESEN
11 SEP 15
Eff 16 Sep 1600Z (16-1)

SANYA, PR OF CHINA
NDB DME Rwy 08

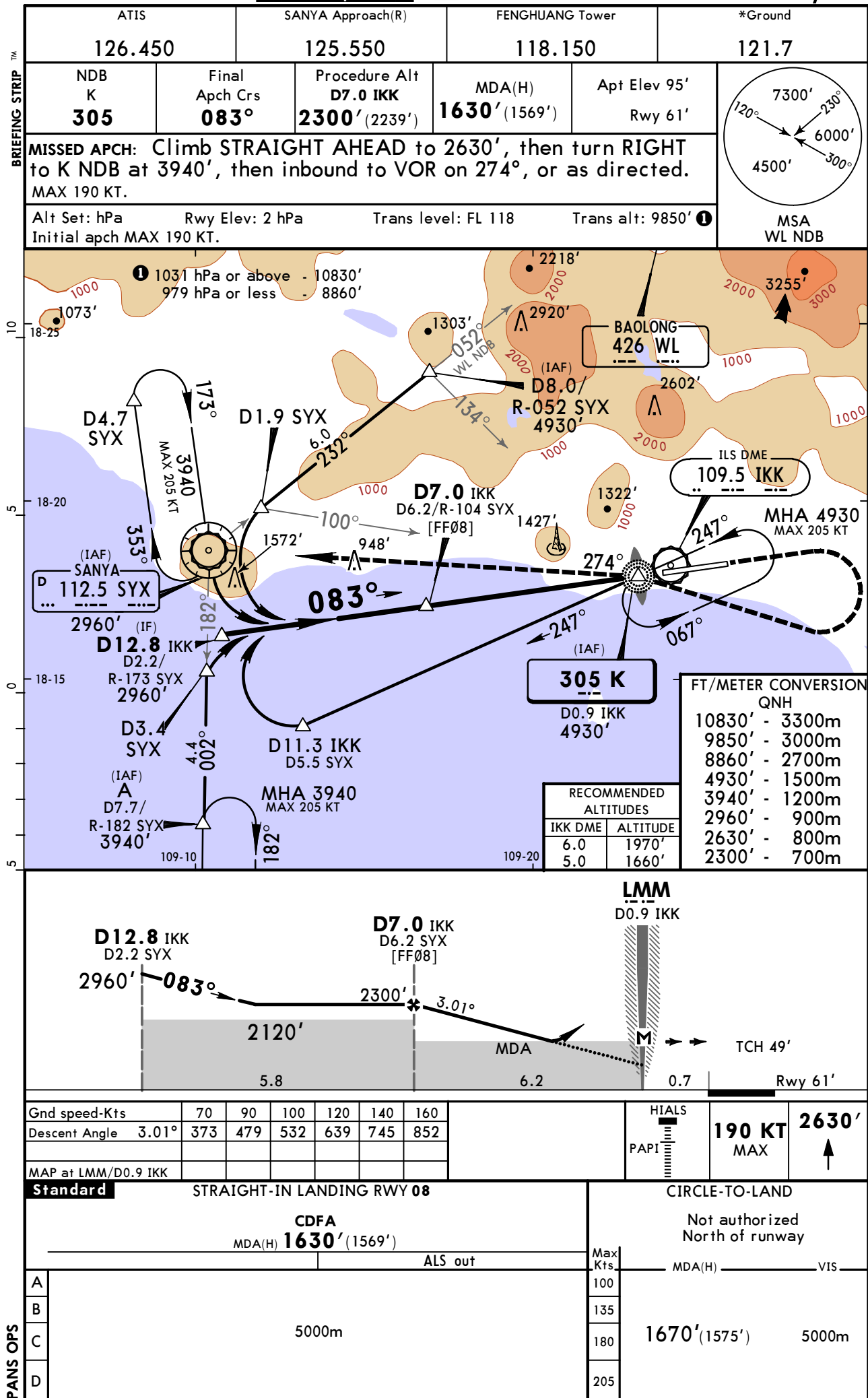


Chart changes since cycle 06-2016

ADD = added chart, REV = revised chart, DEL = deleted chart.

ACT	PROCEDURE IDENT	INDEX	REV DATE	EFF DATE
SANYA, (PHOENIX INTL - ZJSY)				

TERMINAL CHART CHANGE NOTICES

Chart Change Notices for Airport ZJSY

Type: Terminal

Effectivity: Temporary

Begin Date: Immediately

End Date: Until Further Notice

(RNAV SIDs and SIDs RWY 26) Minimum climb gradient 5.1% up to 2140' established.

Chart Change Notices for Country CHN

Type: Gen Tmnl

Effectivity: Permanent

Begin Date: 20150429

End Date: No end date

At the following airports disregard the note "QNH on req" as QFE is avbl only: ZGNN, ZSQZ, ZSWX, ZWTN, ZYJM, ZYMD, ZYQQ and ZYYJ.