

## List of pages in this Trip Kit

Trip Kit Index

Airport Information For ZGKL

Terminal Charts For ZGKL

Revision Letter For Cycle 19-2016

Change Notices

Notebook

## General Information

Location: GUILIN CHN  
ICAO/IATA: ZGKL / KWL  
Lat/Long: N25°13.0', E110°02.3'  
Elevation: 571 ft

Airport Use: Public  
Daylight Savings: Not Observed  
UTC Conversion: -8:00 = UTC  
Magnetic Variation: 2.0°W

Fuel Types: Jet, Jet A-1  
Repair Types: Minor Airframe, Minor Engine  
Customs: No  
Airport Type: IFR  
Landing Fee: Yes  
Control Tower: Yes  
Jet Start Unit: No  
LLWS Alert: No  
Beacon: No

Sunrise: 2317 Z  
Sunset: 0952 Z

## Runway Information

Runway: 01  
Length x Width: 10499 ft x 148 ft  
Surface Type: concrete  
TDZ-Elev: 570 ft  
Lighting: Edge, ALS, Centerline  
Stopway: 197 ft

Runway: 19  
Length x Width: 10499 ft x 148 ft  
Surface Type: concrete  
TDZ-Elev: 567 ft  
Lighting: Edge, ALS, Centerline  
Stopway: 197 ft

## Communication Information

ATIS: 126.450

Liangjiang Tower: 118.000

Liangjiang Tower: 118.700 Secondary

Liangjiang Ground: 121.650

Guilin Approach: 124.650 Secondary

Guilin Approach: 120.850

ZGKL/KWL  
LIANGJIANG

12 JUN 15 10-2

Eff 24 Jun 1600Z

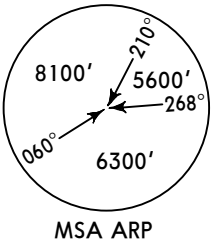
GUILIN, PR OF CHINA

RNAV STAR

ATIS  
126.45

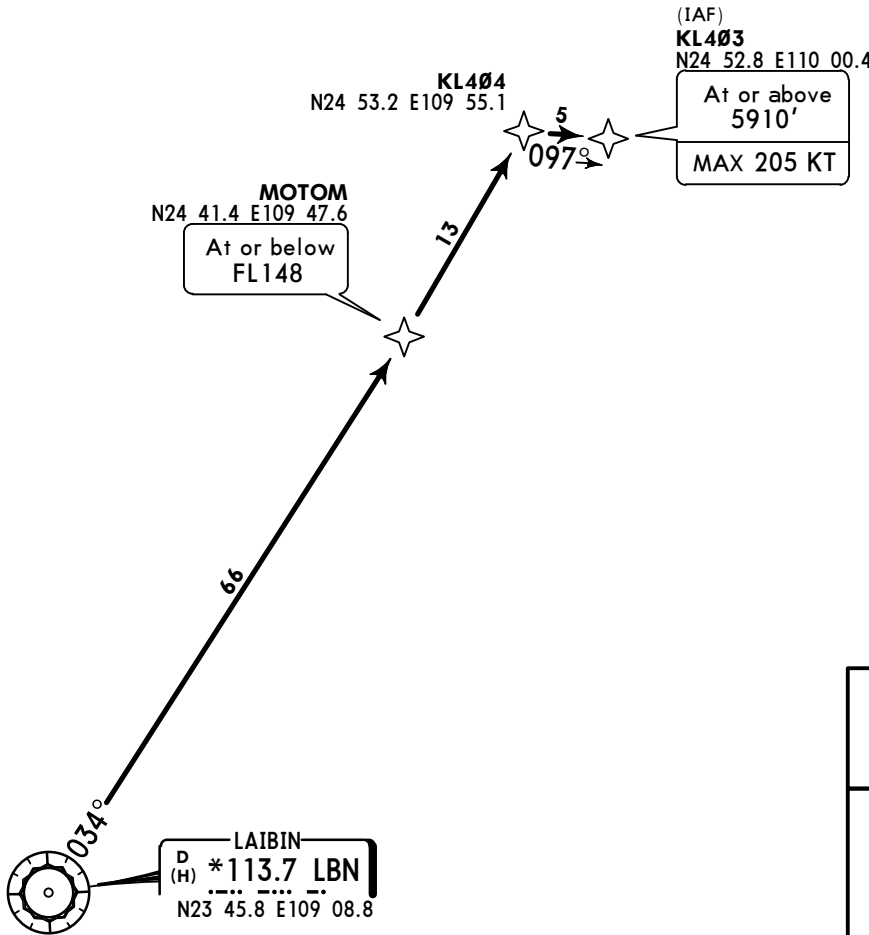
Apt Elev  
571'

Alt Set: hPa  
Trans level: FL118 Trans alt: 9850'  
10830' 1031 hPa or above  
8860' 979 hPa or below



LBN 09A  
RWY 01 RNAV ARRIVAL  
RNP 1 / RNAV 1  
GNSS REQUIRED  
RADAR REQUIRED (RNAV 1 ONLY)

Direct distance to  
Liangjiang Apt from:  
KL403 20 NM



FL CONVERSION	
FL 148	FL 4500m
FL 118	FL 3600m

FT/METER CONVERSION	
QNH	
10830'	- 3300m
9850'	- 3000m
8860'	- 2700m
5910'	- 1800m

ROUTING

LBN - MOTOM (FL148-) - KL404 - KL403 (5910'+; K205-).

ZGKL/KWL  
LIANGJIANG

12 JUN 15 **10-2A**

Eff 24 Jun 1600Z

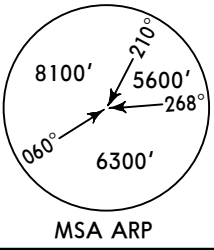
GUILIN, PR OF CHINA

**RNAV STAR**

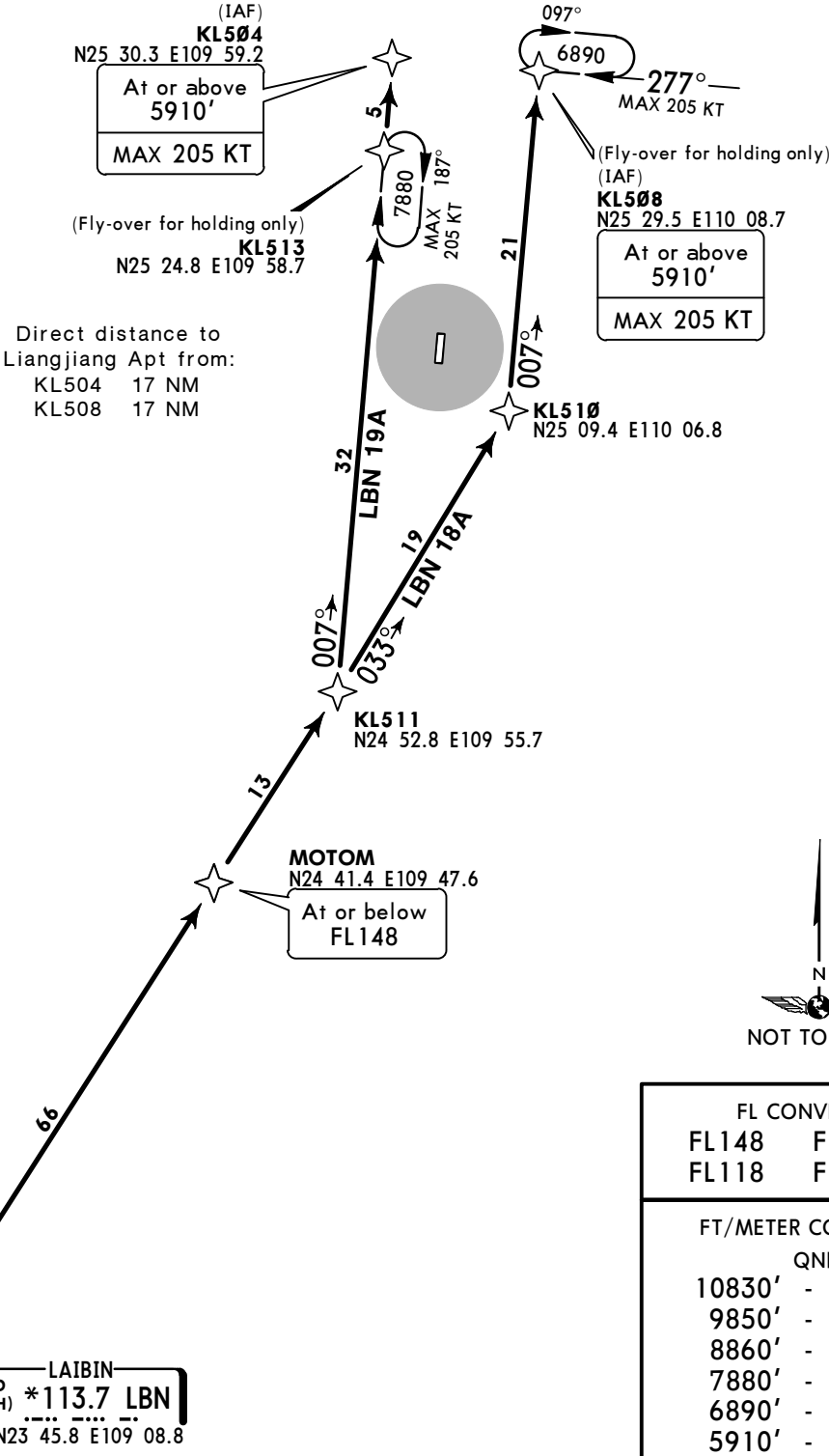
ATIS  
**126.45**

Apt Elev  
**571'**

Alt Set: hPa  
Trans level: FL118    Trans alt: 9850'  
10830' 1031 hPa or above  
8860' 979 hPa or below



**LBN 18A**  
**LBN 19A**  
**RWY 19 RNAV ARRIVALS**  
RNP 1 / RNAV 1  
GNSS REQUIRED  
RADAR REQUIRED (RNAV 1 ONLY)



FL CONVERSION	
FL 148	FL 4500m
FL 118	FL 3600m

FT/METER CONVERSION	
QNH	
10830'	- 3300m
9850'	- 3000m
8860'	- 2700m
7880'	- 2400m
6890'	- 2100m
5910'	- 1800m

STAR	ROUTING
<b>LBN 18A</b> By ATC	LBN - MOTOM (FL148-) - KL511 - KL510 - KL508 (5910'+; K205-).
<b>LBN 19A</b>	LBN - MOTOM (FL148-) - KL511 - KL513 - KL504 (5910'+; K205-).

**ZGKL/KWL**  
**LIANGJIANG**

12 JUN 15

**10-2B**

**Eff 24 Jun 1600Z**

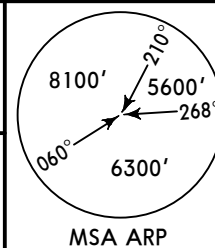
**GUILIN, PR OF CHINA**

**RNAV STAR**

ATIS  
**126.45**

Apt Elev  
**571'**

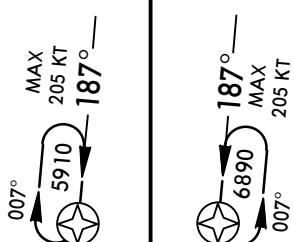
Alt Set: hPa  
Trans level: FL118 Trans alt: 9850'  
10830' 1031 hPa or above  
8860' 979 hPa or below



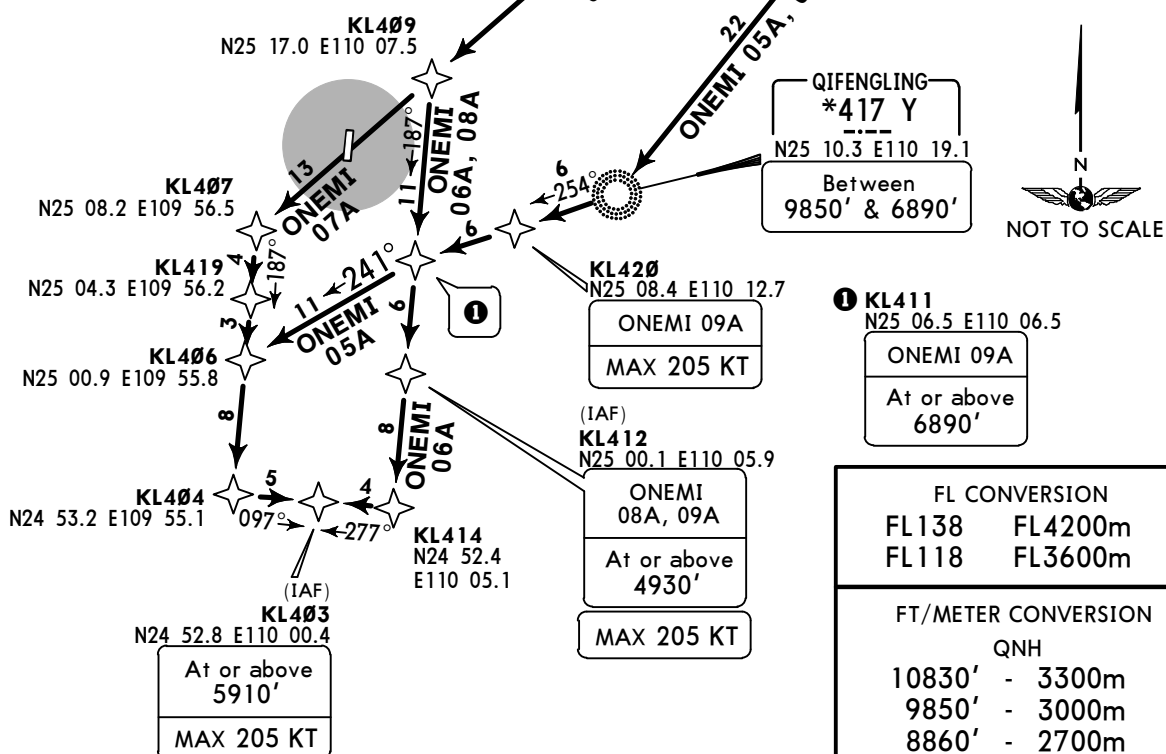
**ONEMI 05A [ONE05A], ONEMI 06A [ONE06A]**  
**ONEMI 07A [ONE07A], ONEMI 08A [ONE08A]**

**ONEMI 09A [ONE09A]**  
**RWY 01 RNAV ARRIVALS**  
RNP 1 / RNAV 1  
GNSS REQUIRED  
RADAR REQUIRED (RNAV 1 ONLY)

**HOLDINGS OVER**  
**KL412 KL419**



Direct distance to  
Liangjiang Apt from:  
KL403 20 NM  
KL412 13 NM



**ONEMI**  
N25 45.1 E110 36.5  
At or above  
FL138

**DARONGJIANG**  
398 VQ  
N25 33.7 E110 28.6

A N25 34.0 E110 40.0

**QIFENGLING**  
\*417 Y  
N25 10.3 E110 19.1  
Between  
9850' & 6890'

**KL411**  
N25 06.5 E110 06.5  
ONEMI 09A  
At or above  
6890'

**FL CONVERSION**  
FL138 FL4200m  
FL118 FL3600m

**FT/METER CONVERSION**  
QNH  
10830' - 3300m  
9850' - 3000m  
8860' - 2700m  
6890' - 2100m  
5910' - 1800m  
4930' - 1500m

STAR	ROUTING
<b>ONEMI 05A</b>	ONEMI (FL138+) - A - KL410 - Y (9850'-; 6890'+) - KL411 - KL406 - KL404 - KL403 (5910'+; K205-).
<b>ONEMI 06A</b> By ATC	ONEMI (FL138+) - VQ - KL409 - KL412 (K205-) - KL414 - KL403 (5910'+; K205-).
<b>ONEMI 07A</b> By ATC	ONEMI (FL138+) - VQ - KL409 - KL412 (4930'+; K205-).
<b>ONEMI 08A</b> By ATC	ONEMI (FL138+) - VQ - KL409 - KL412 (4930'+; K205-).
<b>ONEMI 09A</b>	ONEMI (FL138+) - A - KL410 - Y (9850'-; 6890'+) - KL420 (K205-) - KL411 (6890'+) - KL412 (4930'+; K205-).



**ZGKL/KWL**  
**LIANGJIANG**

12 JUN 15

**10-2D**

**Eff 24 Jun 1600Z**

**GUILIN, PR OF CHINA**

**RNAV STAR**

ATIS  
**126.45**

Apt Elev  
**571'**

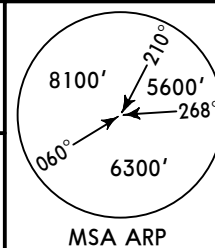
Alt Set: hPa

Trans level: FL118

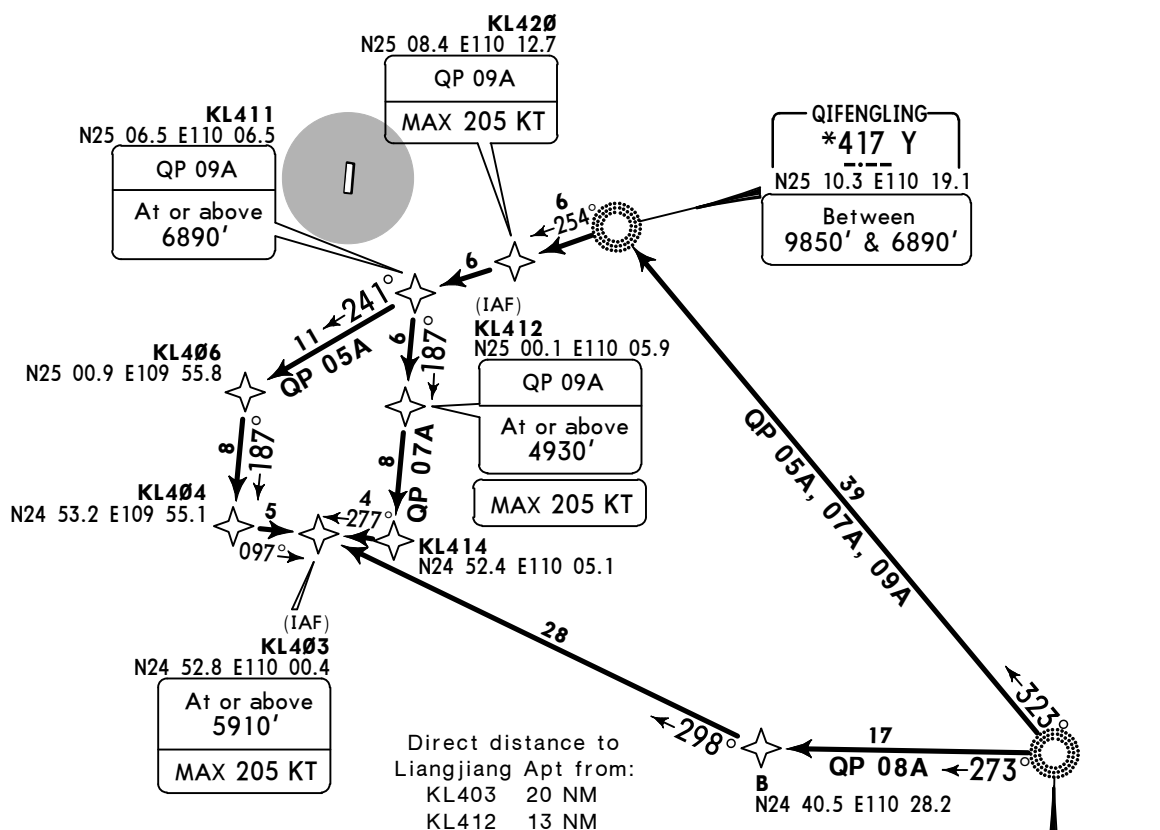
Trans alt: 9850'

10830' 1031 hPa or above

8860' 979 hPa or below



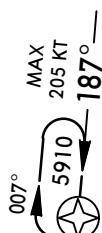
**QP 05A, QP 07A**  
**QP 08A, QP 09A**  
**RWY 01 RNAV ARRIVALS**  
RNP 1 / RNAV 1  
GNSS REQUIRED  
RADAR REQUIRED (RNAV 1 ONLY)



FL CONVERSION  
FL157 FL4800m  
FL138 FL4200m  
FL118 FL3600m

FT/METER CONVERSION  
QNH  
10830' - 3300m  
9850' - 3000m  
8860' - 2700m  
6890' - 2100m  
5910' - 1800m  
4930' - 1500m

**HOLDING OVER KL412**



STAR	ROUTING
<b>QP 05A</b>	QP (CAT C & D: FL138/FL157; CAT B: FL118; CAT A: enroute ALT) - Y (9850'-; 6890'+) - KL411 - KL406 - KL404 - KL403 (5910'+; K205-).
<b>QP 07A</b> By ATC	QP (CAT C & D: FL138/FL157; CAT B: FL118; CAT A: enroute ALT) - Y (9850'-; 6890'+) - KL411 - KL412 (K205-) - KL414 - KL403 (5910'+; K205-).
<b>QP 08A</b> By ATC	QP (CAT C & D: FL138/FL157; CAT B: FL118; CAT A: enroute ALT) - B - KL403 (5910'+; K205-).
<b>QP 09A</b>	QP (CAT C & D: FL138/FL157; CAT B: FL118; CAT A: enroute ALT) - Y (9850'-; 6890'+) - KL420 (K205-) - KL411 (6890'+) - KL412 (4930'+; K205-).



**ZGKL/KWL**  
**LIANGJIANG**

12 JUN 15

**10-2E**

**Eff 24 Jun 1600Z**

**GUILIN, PR OF CHINA**

**RNAV STAR**

ATIS  
**126.45**

Apt Elev  
**571'**

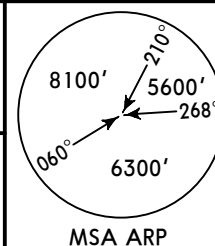
Alt Set: hPa

Trans level: FL118

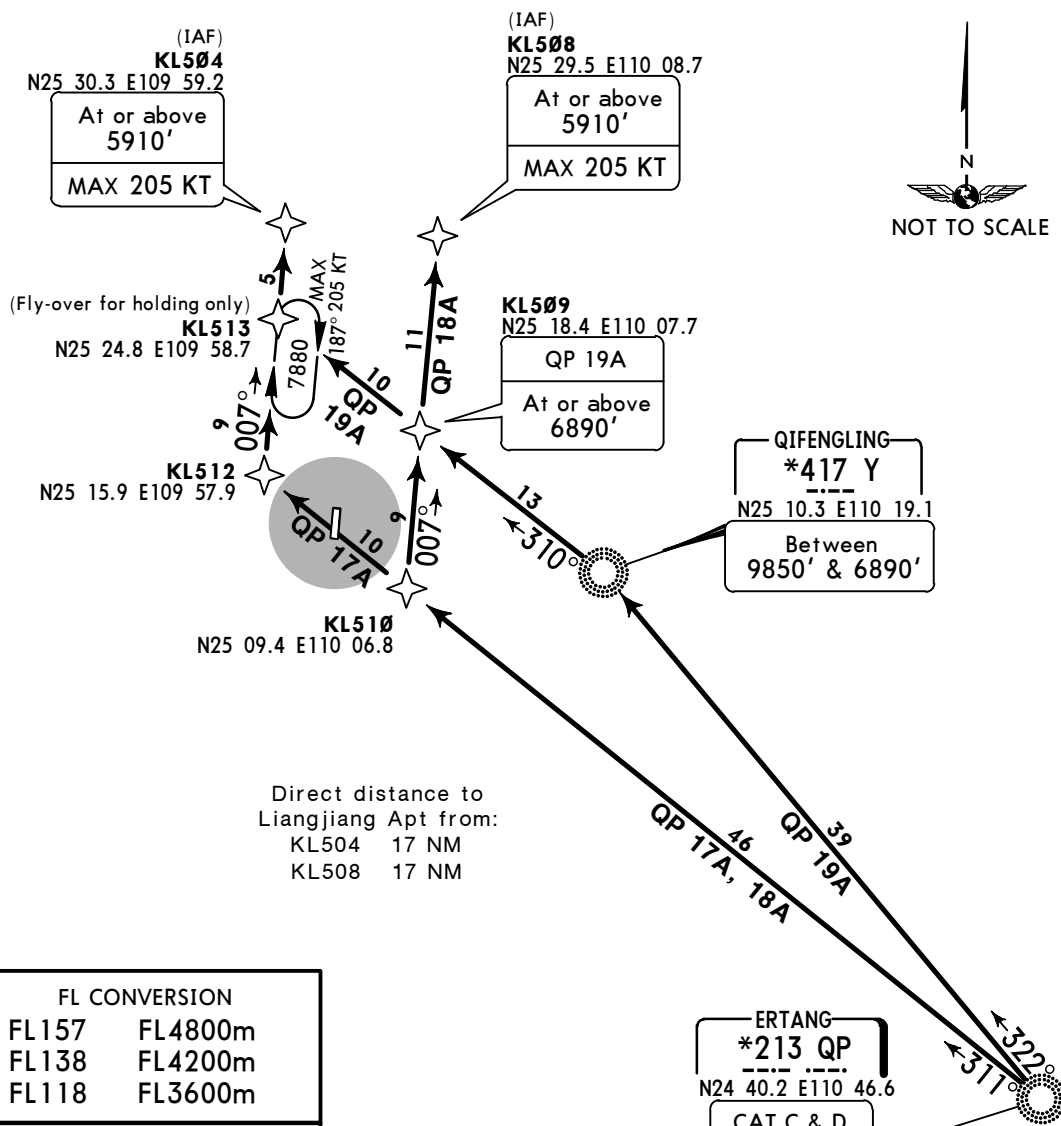
Trans alt: 9850'

10830' 1031 hPa or above

8860' 979 hPa or below



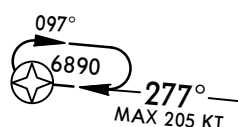
**QP 17A, QP 18A**  
**QP 19A**  
**RWY 19 RNAV ARRIVALS**  
RNP 1 / RNAV 1  
GNSS REQUIRED  
RADAR REQUIRED (RNAV 1 ONLY)



FL CONVERSION	
FL157	FL4800m
FL138	FL4200m
FL118	FL3600m

FT/METER CONVERSION	
QNH	
10830'	3300m
9850'	3000m
8860'	2700m
7880'	2400m
6890'	2100m
5910'	1800m

**HOLDING OVER KL508**



STAR	ROUTING
<b>QP 17A</b> By ATC	QP (CAT C & D: FL138/FL157; CAT B: FL118; CAT A: enroute ALT) - KL512 - KL513 - KL504 (5910'+; K205-).
<b>QP 18A</b> By ATC	QP (CAT C & D: FL138/FL157; CAT B: FL118; CAT A: enroute ALT) - KL510 - KL508 (5910'+; K205-).
<b>QP 19A</b>	QP (CAT C & D: FL138/FL157; CAT B: FL118; CAT A: enroute ALT) - Y (9850'-; 6890'+) - KL509 (6890'+) - KL513 - KL504 (5910'+; K205-).

CHANGES: New procedures at this airport.

© JEPPESEN, 2015. ALL RIGHTS RESERVED.

ZGKL/KWL  
LIANGJIANG

12 JUN 15 10-2F

Eff 24 Jun 1600Z

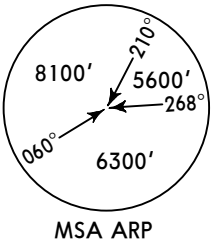
GUILIN, PR OF CHINA

RNAV STAR

ATIS  
126.45

Apt Elev  
571'

Alt Set: hPa  
Trans level: FL118 Trans alt: 9850'  
10830' 1031 hPa or above  
8860' 979 hPa or below



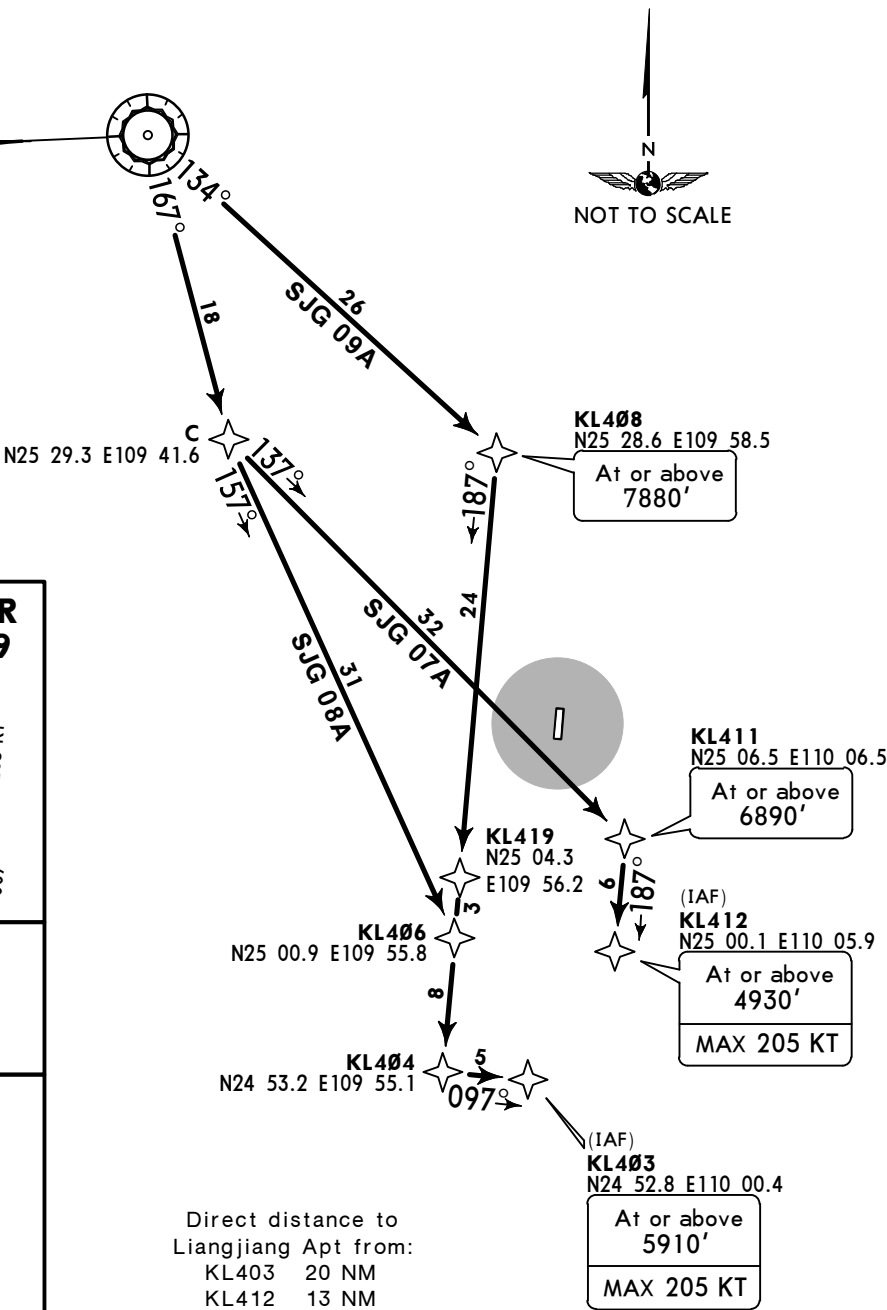
SJG 07A, SJG 08A  
SJG 09A  
RWY 01 RNAV ARRIVALS  
RNP 1 / RNAV 1  
GNSS REQUIRED  
RADAR REQUIRED (RNAV 1 ONLY)

SANJIANG  
D \*116.8 SJG  
... ..  
N25 46.6 E109 36.6

CAT C & D  
At FL148  
or at FL128

CAT B  
At FL128

CAT A  
At enroute ALT



**HOLDINGS OVER**

KL412	KL419
MAX 205 KT 187° 007° 5910'	MAX 205 KT 187° 007° 6890'

**FL CONVERSION**

FL	FL
FL148	FL4500m
FL128	FL3900m
FL118	FL3600m

**FT/METER CONVERSION**

QNH	FT	METER
10830'	-	3300m
9850'	-	3000m
8860'	-	2700m
7880'	-	2400m
6890'	-	2100m
5910'	-	1800m
4930'	-	1500m

STAR	ROUTING
SJG 07A By ATC	SJG (CAT C & D: FL128/FL148; CAT B: FL128; CAT A: enroute ALT) - C - KL411 (6890'+) - KL412 (4930'+; K205-),
SJG 08A By ATC	SJG (CAT C & D: FL128/FL148; CAT B: FL128; CAT A: enroute ALT) - C - KL406 - KL404 - KL403 (5910'+; K205-).
SJG 09A	SJG (CAT C & D: FL128/FL148; CAT B: FL128; CAT A: enroute ALT) - KL408 (7880'+) - KL419 - KL404 - KL403 (5910'+; K205-).

ZGKL/KWL  
LIANGJIANG

12 JUN 15 **10-2G**

Eff 24 Jun 1600Z

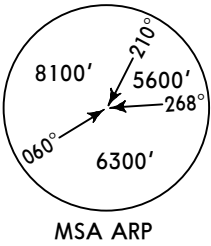
GUILIN, PR OF CHINA

**RNAV STAR**

ATIS  
**126.45**

Apt Elev  
**571'**

Alt Set: hPa  
Trans level: FL118    Trans alt: 9850'  
10830' 1031 hPa or above  
8860' 979 hPa or below



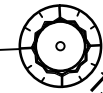
**SJG 18A**  
**SJG 19A**  
**RWY 19 RNAV ARRIVALS**  
RNP 1 / RNAV 1  
GNSS REQUIRED  
RADAR REQUIRED (RNAV 1 ONLY)

SANJIANG  
D \*116.8 SJG  
N25 46.6 E109 36.6

CAT C & D  
At FL148  
or at FL128

CAT B  
At FL128

CAT A  
At enroute ALT



KL506  
N25 38.4 E109 46.4

KL518  
N25 37.5 E109 58.4  
At or above  
7880'

097° 11  
120° 12  
SJG 18A  
SJG 19A

(IAF)  
KL507  
N25 37.0 E110 04.7  
At or above  
6890'  
MAX 205 KT

(IAF)  
KL505  
N25 32.8 E109 58.0  
At or above  
7220'  
MAX 205 KT



FL CONVERSION  
FL148    FL4500m  
FL128    FL3900m  
FL118    FL3600m

FT/METER CONVERSION  
QNH  
10830' - 3300m  
9850' - 3000m  
8860' - 2700m  
7880' - 2400m  
7220' - 2200m  
6890' - 2100m

Direct distance to  
Liangjiang Apt from:  
KL505    20 NM  
KL507    24 NM

STAR	ROUTING
<b>SJG 18A</b> By ATC	SJG (CAT C & D: FL128/FL148; CAT B: FL128; CAT A: enroute ALT) - KL506 - KL518 (7880'+) - KL507 (6890'+; K205-).
<b>SJG 19A</b>	SJG (CAT C & D: FL128/FL148; CAT B: FL128; CAT A: enroute ALT) - KL506 - KL505 (7220'+; K205-).

**ZGKL/KWL**  
**LIANGJIANG**

**JEPPESEN**  
12 JUN 15 **10-2H**

**GUILIN, PR OF CHINA**

**Eff 24 Jun 1600Z**

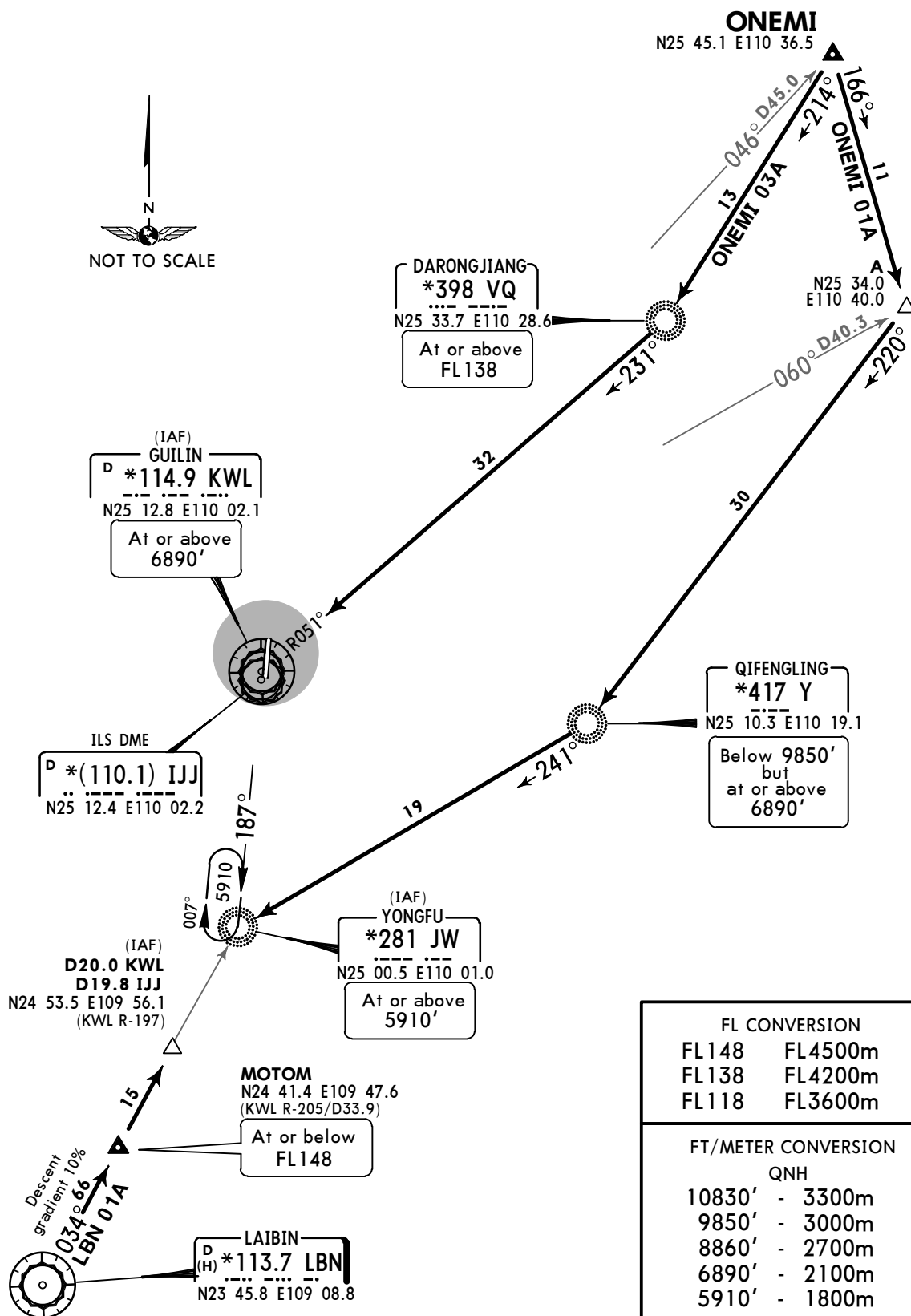
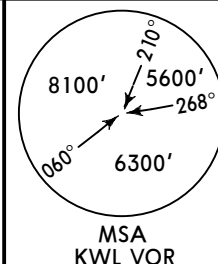
**STAR**

ATIS  
**126.45**

Apt Elev  
**571'**

Alt set: hPa  
Trans level: FL118 Trans alt: 9850'  
10830' 1031 hPa or above  
8860' 979 hPa or below

**LBN 01A**  
**ONEMI 01A [ONE01A]**  
**ONEMI 03A [ONE03A]**  
**BY ATC**  
**RWY 01 ARRIVALS**



CHANGES: New chart (STARs transferred).

© JEPPESEN, 2015. ALL RIGHTS RESERVED.

ZGKL/KWL  
LIANGJIANG

12 JUN 15 10-2J

Eff 24 Jun 1600Z

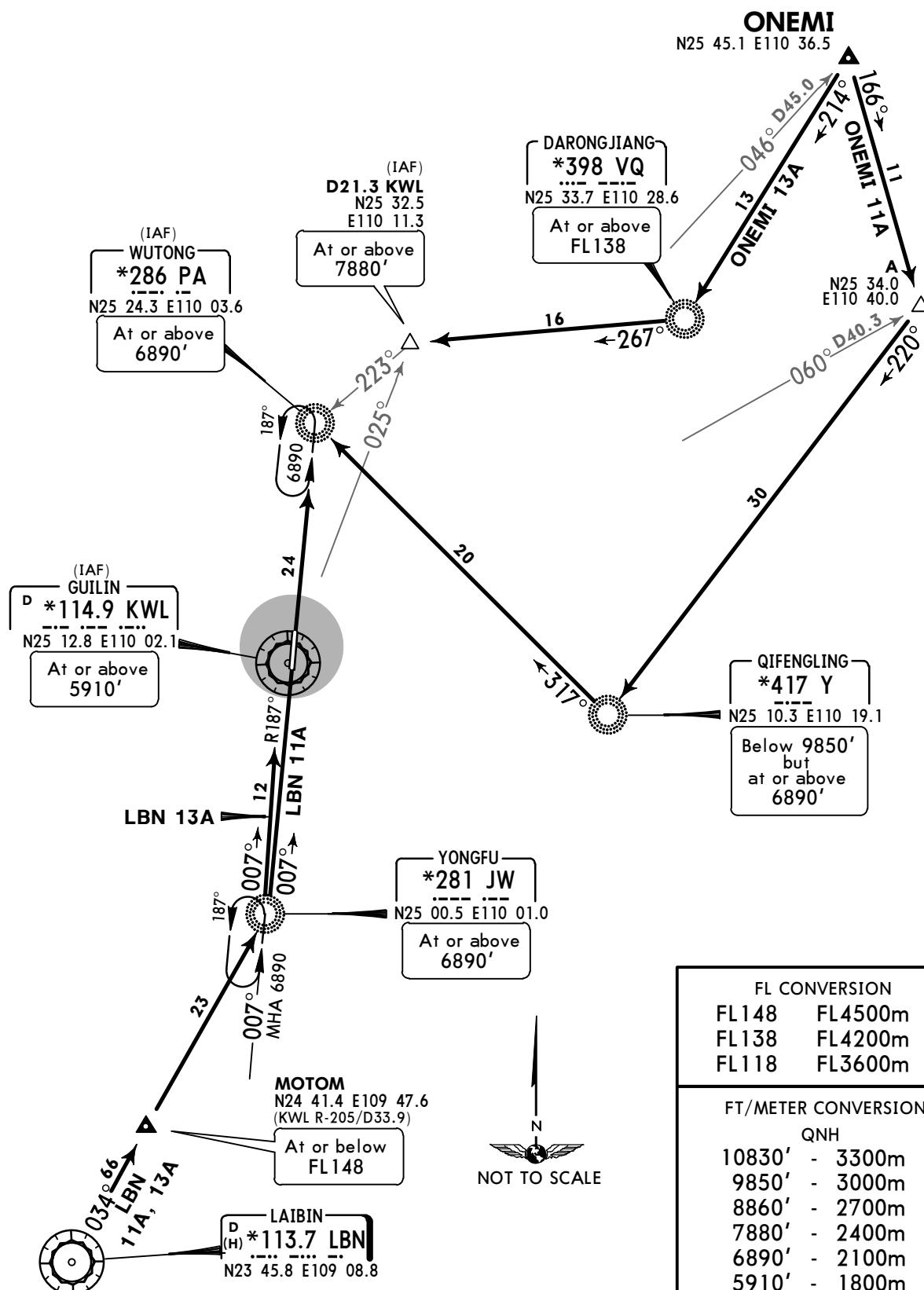
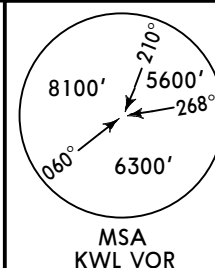
GUILIN, PR OF CHINA  
STAR

ATIS  
126.45

Apt Elev  
571'

Alt set: hPa  
Trans level: FL118 Trans alt: 9850'  
10830' 1031 hPa or above  
8860' 979 hPa or below

LBN 11A, LBN 13A  
ONEMI 11A [ONE11A]  
ONEMI 13A [ONE13A]  
BY ATC  
RWY 19 ARRIVALS



FL CONVERSION	
FL148	FL4500m
FL138	FL4200m
FL118	FL3600m

FT/METER CONVERSION	
QNH	
10830'	3300m
9850'	3000m
8860'	2700m
7880'	2400m
6890'	2100m
5910'	1800m

**ZGKL/KWL**  
**LIANGJIANG**

**JEPPESEN**

**GUILIN, PR OF CHINA**

12 JUN 15

**10-2K**

**Eff 24 Jun 1600Z**

**STAR**

ATIS  
**126.45**

Apt Elev  
**571'**

Alt set: hPa

Trans level: FL118

Trans alt: 9850'

10830' 1031 hPa or above

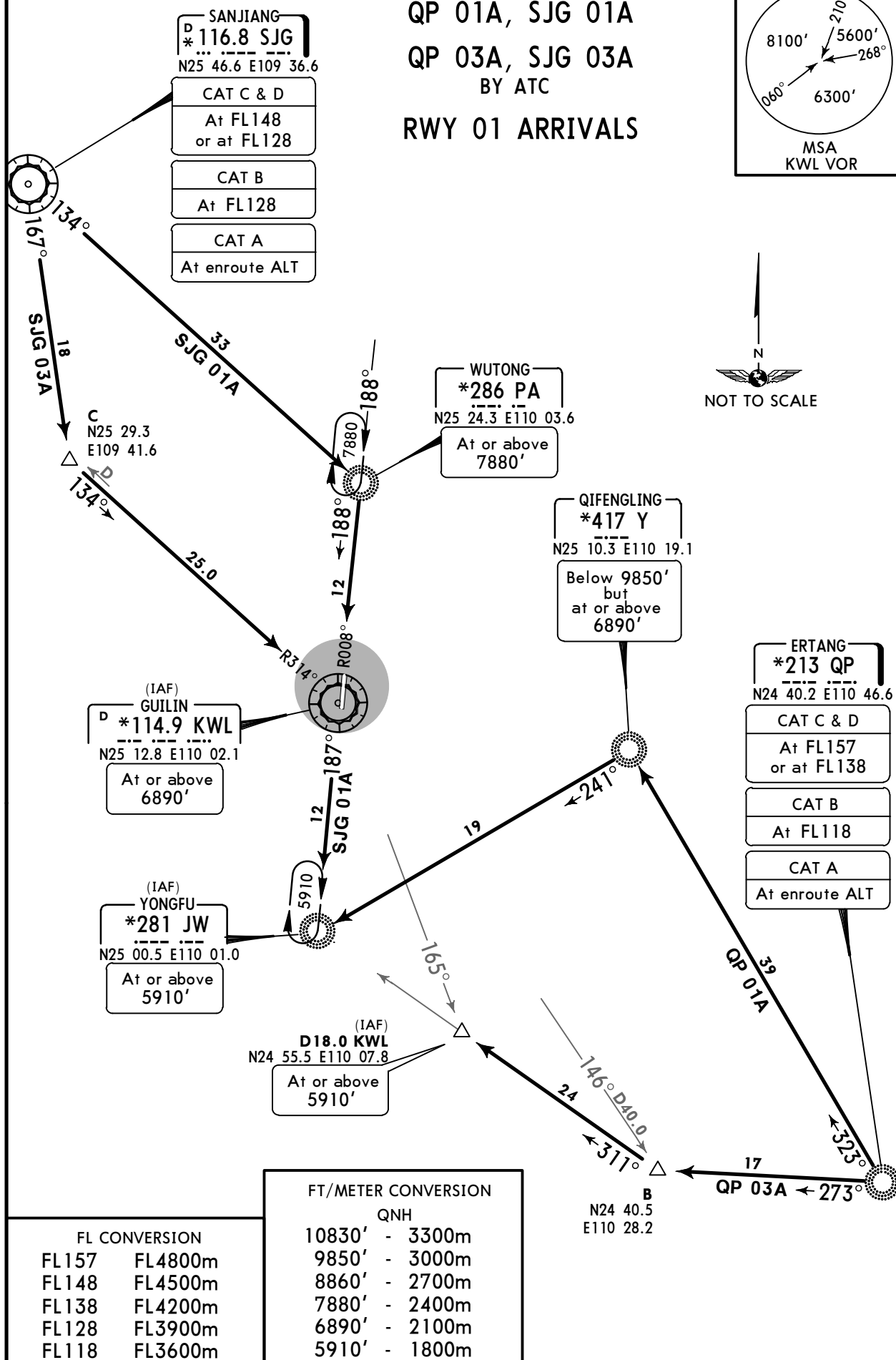
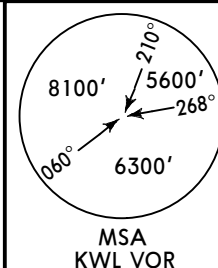
8860' 979 hPa or below

**QP 01A, SJG 01A**

**QP 03A, SJG 03A**

**BY ATC**

**RWY 01 ARRIVALS**



CHANGES: New chart (STARs transferred).

© JEPPESEN, 2015. ALL RIGHTS RESERVED.

**ZGKL/KWL**  
**LIANGJIANG**

**JEPPESEN**  
12 JUN 15 **10-2L**

**GUILIN, PR OF CHINA**

**Eff 24 Jun 1600Z**

**STAR**

ATIS  
**126.45**

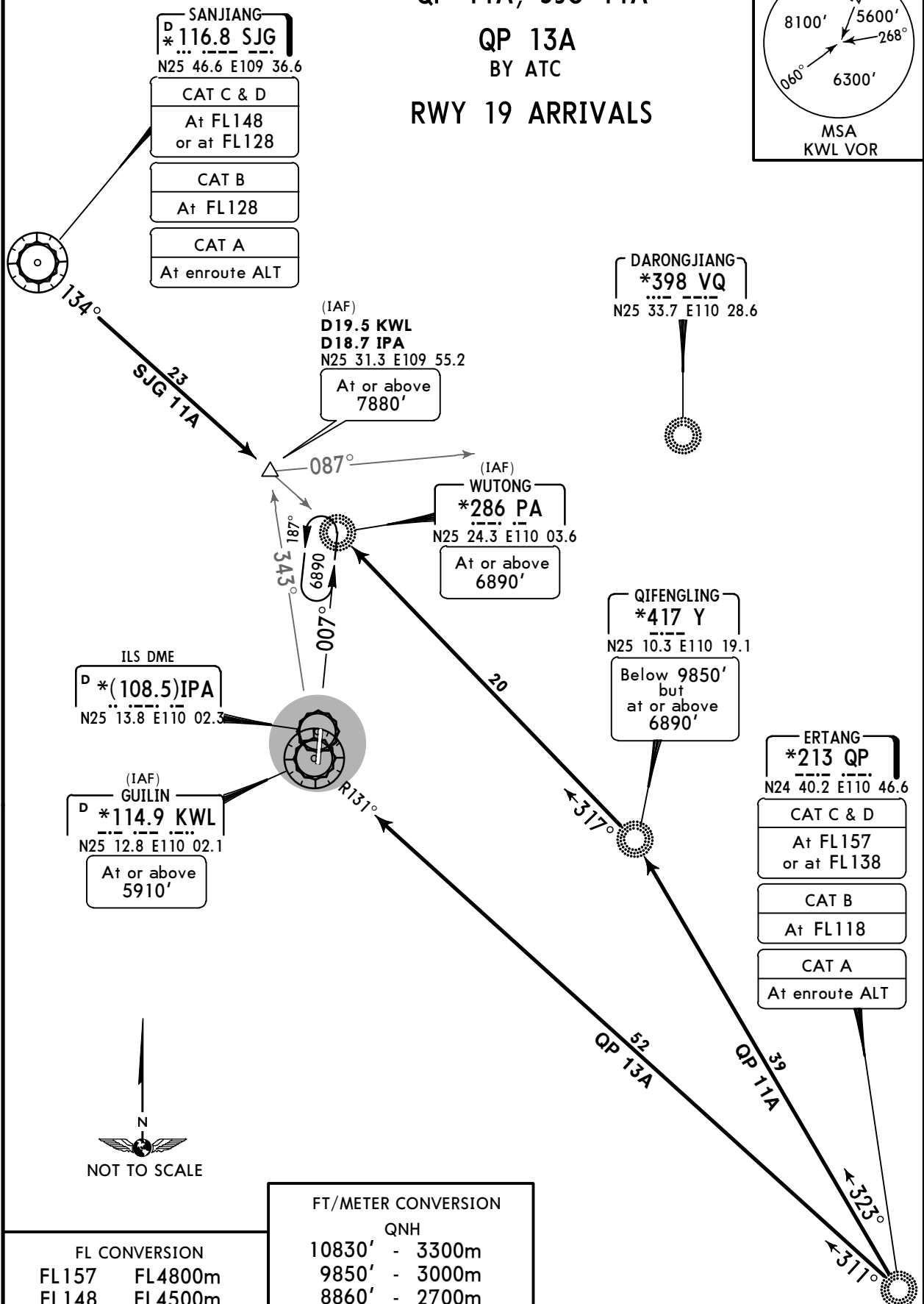
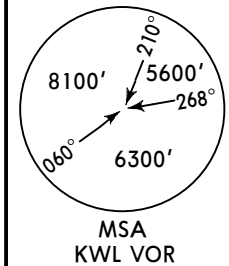
Apt Elev  
**571'**

Alt set: hPa  
Trans level: FL118    Trans alt: 9850'  
10830' 1031 hPa or above  
8860' 979 hPa or below

**QP 11A, SJG 11A**

**QP 13A**  
**BY ATC**

**RWY 19 ARRIVALS**



NOT TO SCALE

**FT/METER CONVERSION**

QNH

FL CONVERSION	
FL157	FL4800m
FL148	FL4500m
FL138	FL4200m
FL128	FL3900m
FL118	FL3600m

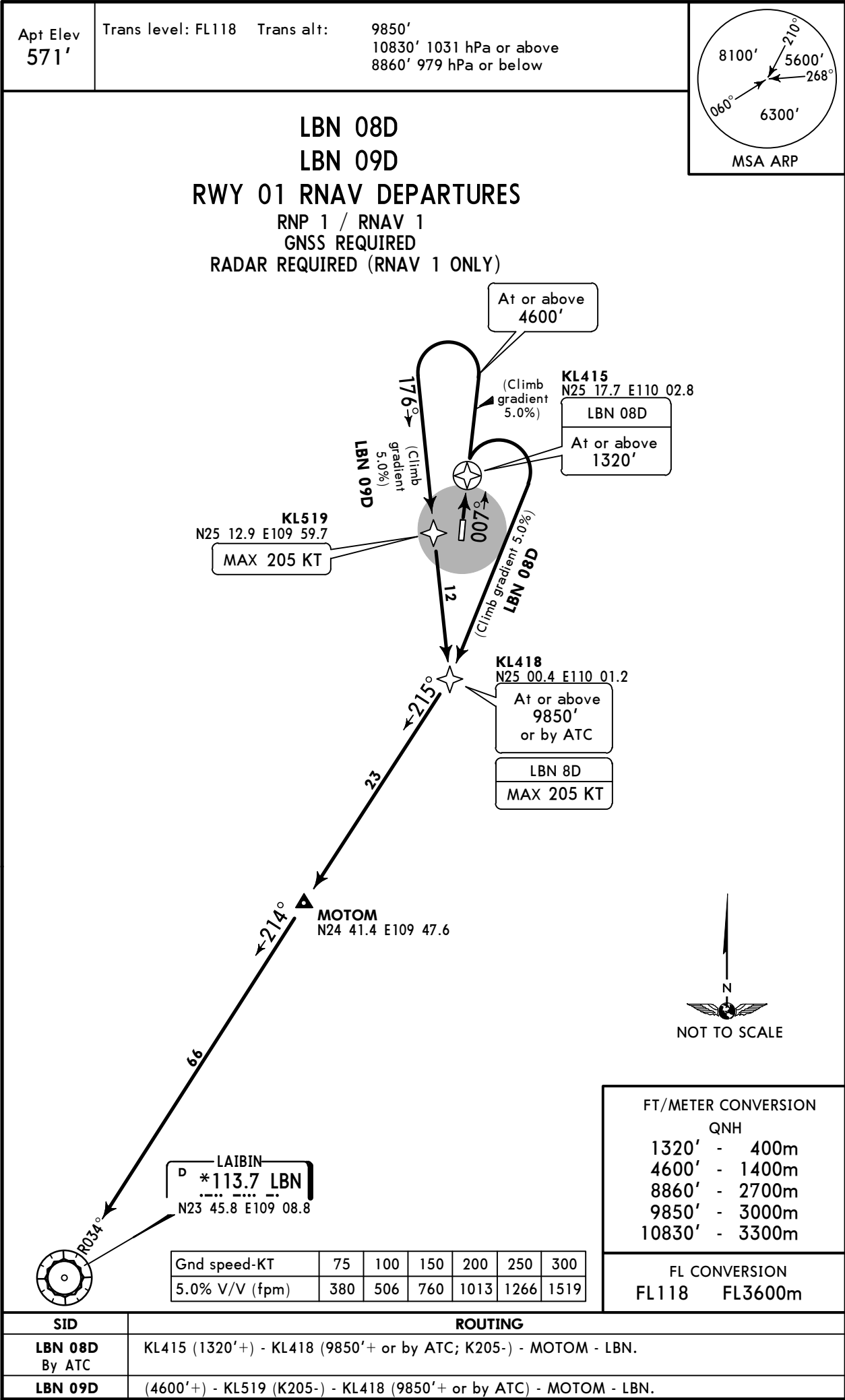
10830'	-	3300m
9850'	-	3000m
8860'	-	2700m
7880'	-	2400m
6890'	-	2100m
5910'	-	1800m

ZGKL/KWL  
LIANGJIANG

JEPPESSEN  
29 JAN 16 10-3 Eff 3 Feb 1600Z

GUILIN, PR OF CHINA

RNAV SID





ZGKL/KWL  
LIANGJIANG

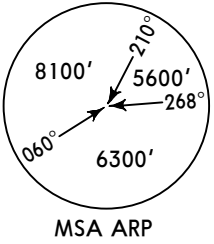
29 JAN 16 **10-3A** **Eff 3 Feb 1600Z**

**GUILIN, PR OF CHINA**

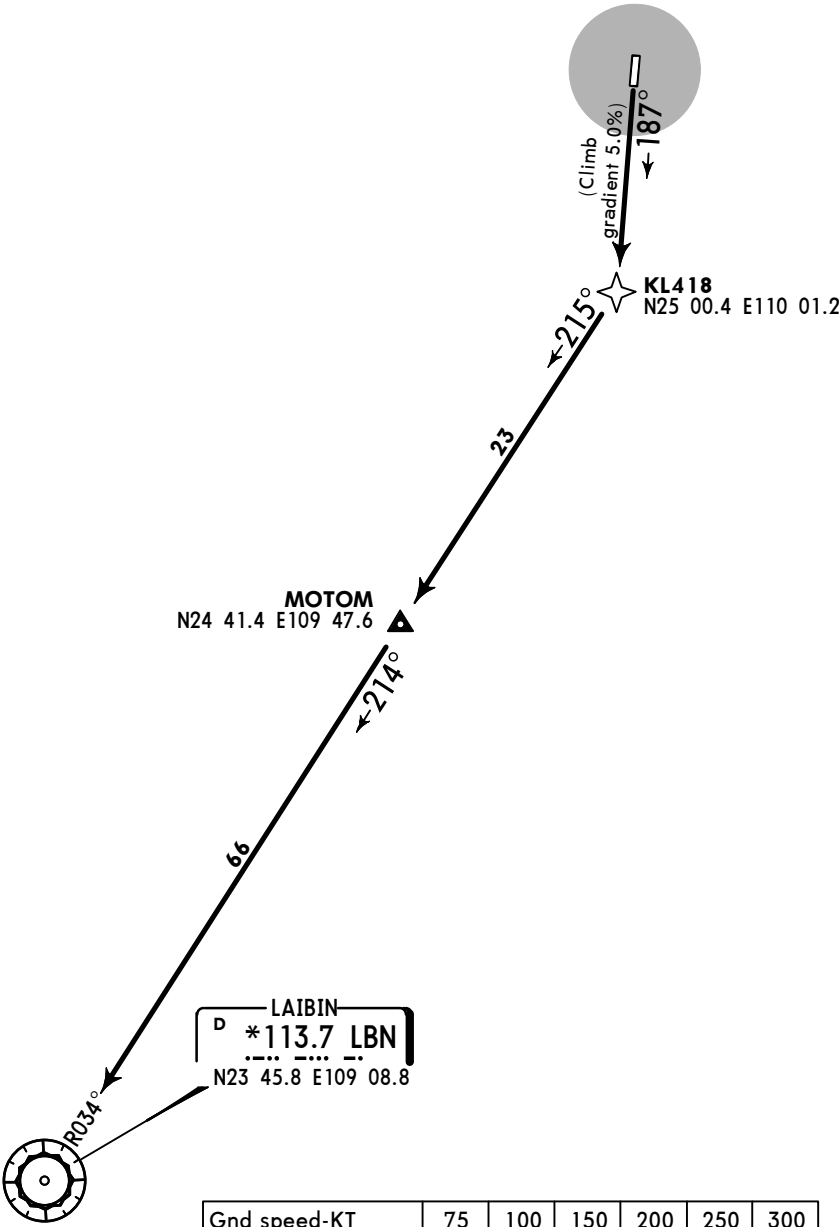
**RNAV SID**

Apt Elev  
**571'**

Trans level: FL118    Trans alt:    9850'  
10830' 1031 hPa or above  
8860' 979 hPa or below



**LBN 19D**  
**RWY 19 RNAV DEPARTURE**  
RNP 1 / RNAV 1  
GNSS REQUIRED  
RADAR REQUIRED (RNAV 1 ONLY)



FT/METER CONVERSION	
QNH	
8860'	- 2700m
9850'	- 3000m
10830'	- 3300m

Gnd speed-KT	75	100	150	200	250	300
5.0% V/V (fpm)	380	506	760	1013	1266	1519

FL CONVERSION	
FL118	FL3600m

**ROUTING**

KL418 - MOTOM - LBN.

ZGKL/KWL  
LIANGJIANG

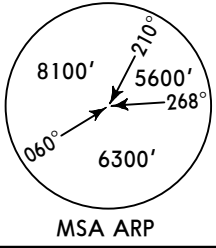
JEPPESSEN  
29 JAN 16 10-3B Eff 3 Feb 1600Z

GUILIN, PR OF CHINA

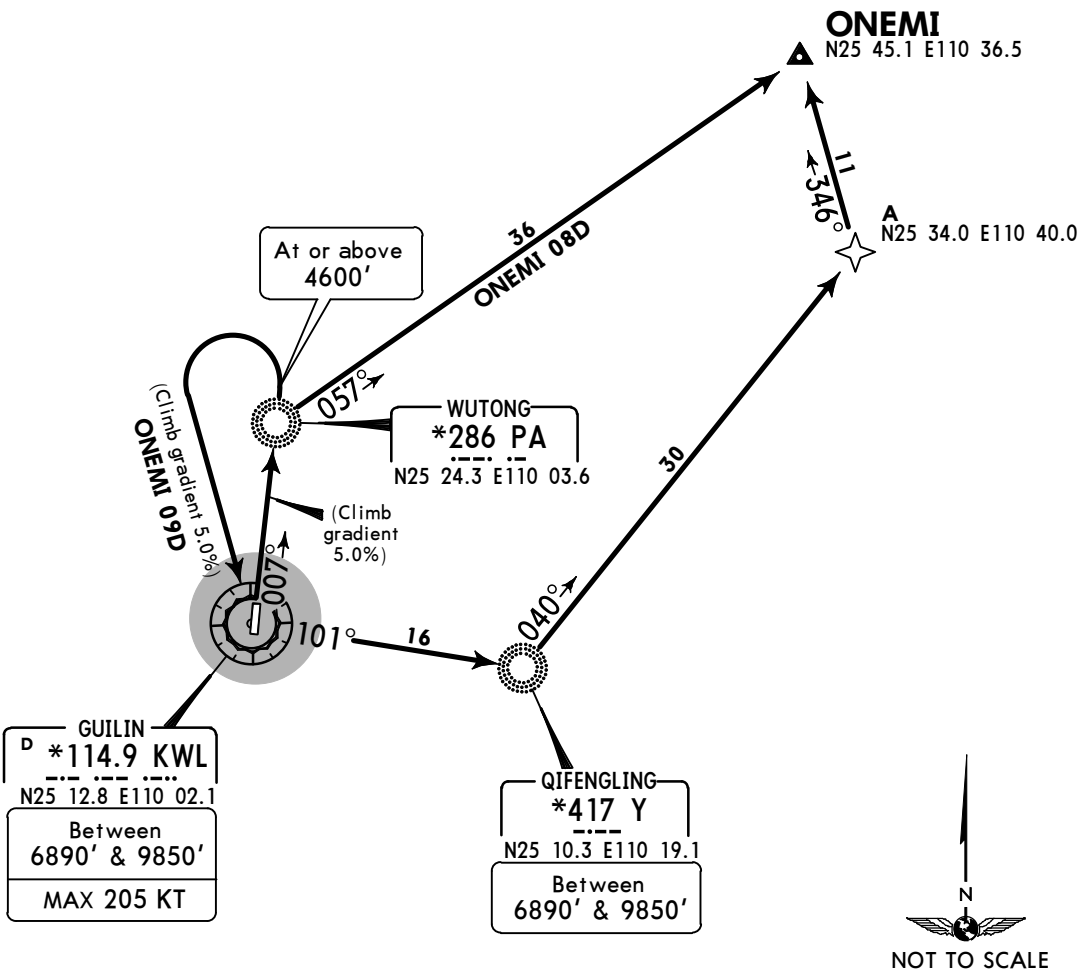
RNAV SID

Apt Elev  
571'

Trans level: FL118 Trans alt: 9850'  
10830' 1031 hPa or above  
8860' 979 hPa or below



ONEMI 08D [ONEØ8D]  
ONEMI 09D [ONEØ9D]  
RWY 01 RNAV DEPARTURES  
RNP 1 / RNAV 1  
GNSS REQUIRED  
RADAR REQUIRED (RNAV 1 ONLY)



FT/METER CONVERSION	
QNH	
4600'	1400m
6890'	2100m
8860'	2700m
9850'	3000m
10830'	3300m

Gnd speed-KT	75	100	150	200	250	300
5.0% V/V (fpm)	380	506	760	1013	1266	1519

FL CONVERSION	
FL118	FL3600m

SID	ROUTING
ONEMI 08D By ATC	PA - ONEMI.
ONEMI 09D	(4600'+) - KWL (6890'+; 9850'-; K205-) - Y (6890'+; 9850'-) - A - ONEMI.

ZGKL/KWL  
LIANGJIANG

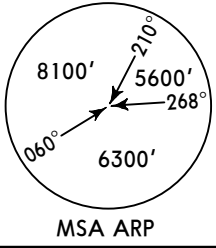
JEPPESSEN  
29 JAN 16 10-3C Eff 3 Feb 1600Z

GUILIN, PR OF CHINA

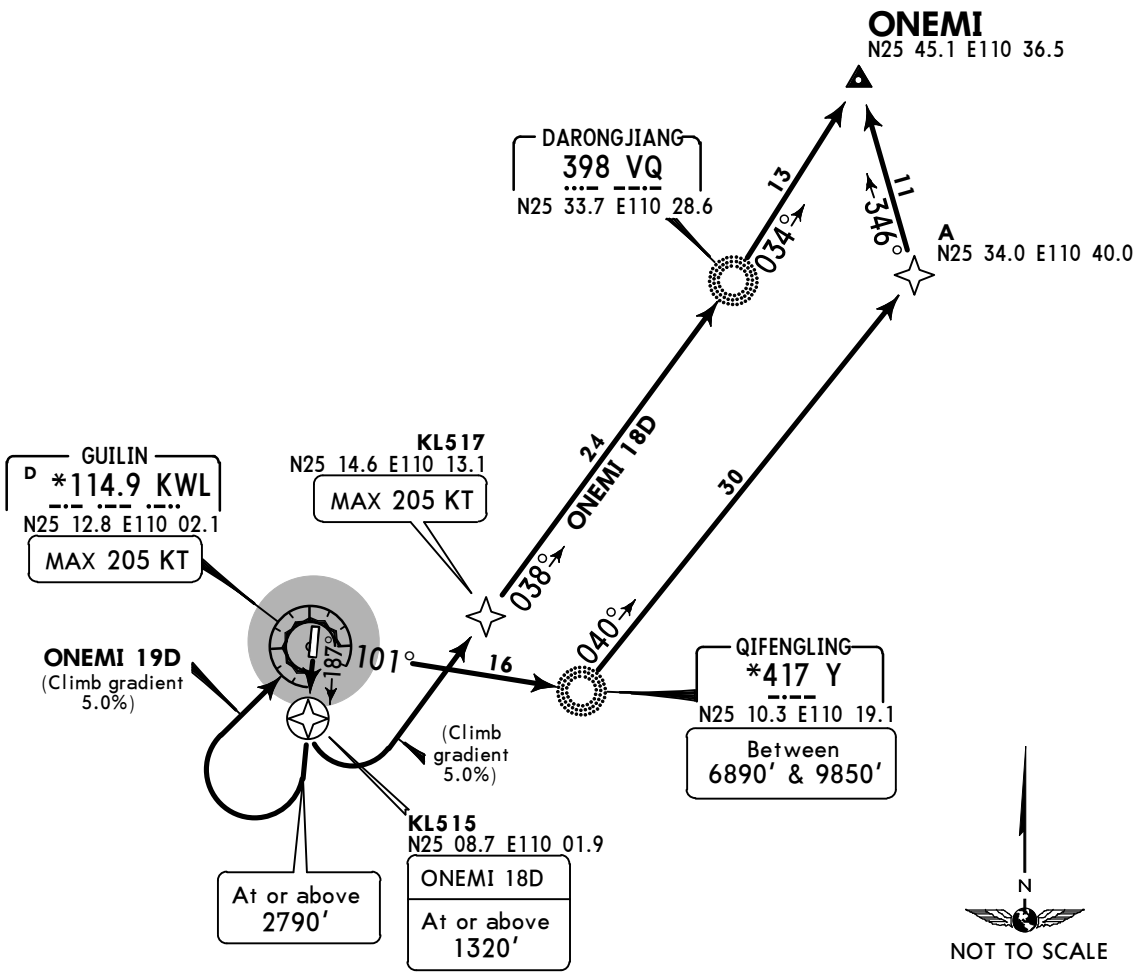
RNAV SID

Apt Elev  
571'

Trans level: FL118 Trans alt: 9850'  
10830' 1031 hPa or above  
8860' 979 hPa or below



ONEMI 18D [ONE18D]  
ONEMI 19D [ONE19D]  
RWY 19 RNAV DEPARTURES  
RNP 1 / RNAV 1  
GNSS REQUIRED  
RADAR REQUIRED (RNAV 1 ONLY)



FT/METER CONVERSION	
QNH	
1320'	400m
2790'	850m
6890'	2100m
8860'	2700m
9850'	3000m
10830'	3300m

Gnd speed-KT	75	100	150	200	250	300
5.0% V/V (fpm)	380	506	760	1013	1266	1519

FL CONVERSION	
FL118	FL3600m

SID	ROUTING
ONEMI 18D By ATC	KL515 (1320'+) - KL517 (K205-) - VQ - ONEMI.
ONEMI 19D	(2790'+) - KWL (K205-) - Y (6890'+; 9850'-) - A - ONEMI.



ZGKL/KWL  
LIANGJIANG

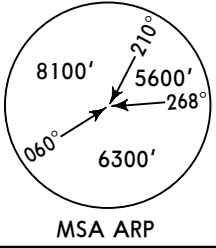
JEPPESSEN  
29 JAN 16 10-3E Eff 3 Feb 1600Z

GUILIN, PR OF CHINA

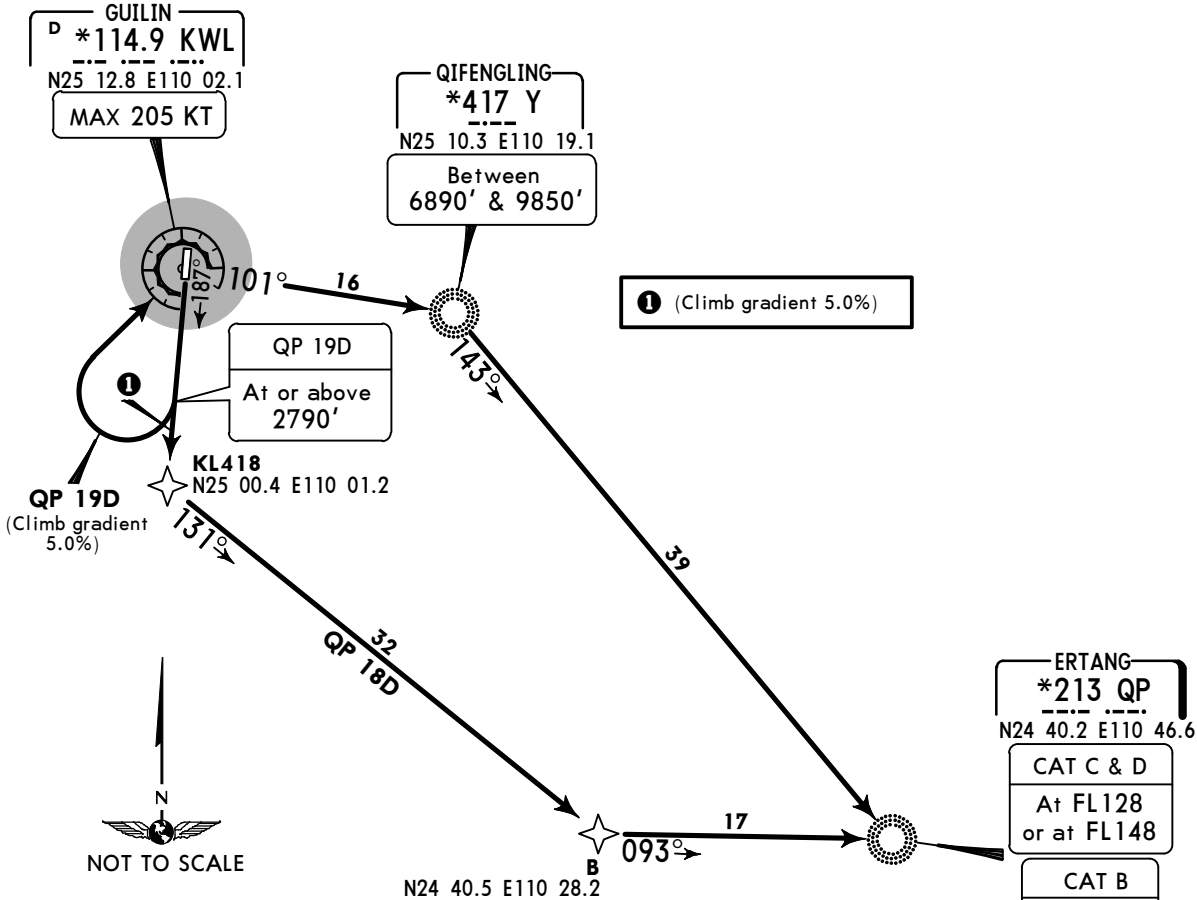
RNAV SID

Apt Elev  
571'

Trans level: FL118 Trans alt: 9850'  
10830' 1031 hPa or above  
8860' 979 hPa or below



QP 18D  
QP 19D  
RWY 19 RNAV DEPARTURES  
RNP 1 / RNAV 1  
GNSS REQUIRED  
RADAR REQUIRED (RNAV 1 ONLY)



FT/METER CONVERSION

QNH	
2790'	- 850m
6890'	- 2100m
8860'	- 2700m
9850'	- 3000m
10830'	- 3300m

FL CONVERSION

FL118	FL3600m
FL128	FL3900m
FL148	FL4500m

Gnd speed-KT	75	100	150	200	250	300
5.0% V/V (fpm)	380	506	760	1013	1266	1519

ERTANG  
\*213 QP  
N24 40.2 E110 46.6

CAT C & D
At FL128 or at FL148
CAT B
At 8860'
CAT A
At enroute ALT

SID	ROUTING
QP 18D By ATC	KL418 - B - QP (CAT C & D: FL128/FL148; CAT B: 8860'; CAT A: enroute ALT).
QP 19D	(2790'+) - KWL (K205-) - Y (6890'+; 9850'-) - QP (CAT C & D: FL128/FL148; CAT B: 8860'; CAT A: enroute ALT).

ZGKL/KWL  
LIANGJIANG

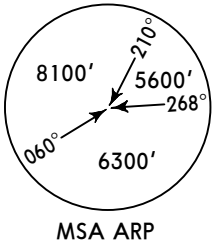
JEPPESSEN  
29 JAN 16 10-3F Eff 3 Feb 1600Z

GUILIN, PR OF CHINA

RNAV SID

Apt Elev  
571'

Trans level: FL118 Trans alt: 9850'  
10830' 1031 hPa or above  
8860' 979 hPa or below



**SJG 09D**  
**RWY 01 RNAV DEPARTURE**  
RNP 1 / RNAV 1  
GNSS REQUIRED  
RADAR REQUIRED (RNAV 1 ONLY)

**SANJIANG**  
D \*116.8 SJG  
... ..  
N25 46.6 E109 36.6

CAT C & D  
At FL138  
or at FL157

CAT B  
At FL118

CAT A  
At enroute ALT



R134°

23

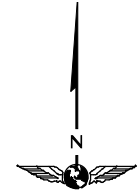
314°

**KL416**  
N25 31.2 E109 55.2  
MAX 205 KT

At or above  
4600'

(Climb  
gradient  
5.0%)

007°



NOT TO SCALE

FT/METER CONVERSION	
QNH	
4600'	- 1400m
8860'	- 2700m
9850'	- 3000m
10830'	- 3300m

FL CONVERSION	
FL118	FL3600m
FL138	FL4200m
FL157	FL4800m

Gnd speed-KT	75	100	150	200	250	300
5.0% V/V (fpm)	380	506	760	1013	1266	1519

**ROUTING**

(4600'+) - KL416 (K205-) - SJG (CAT C & D: FL138/FL157; CAT B: FL118; CAT A: enroute ALT).

ZGKL/KWL  
LIANGJIANG

29 JAN 16

10-3G

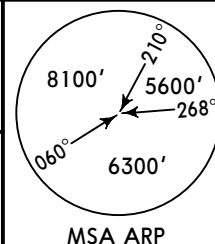
Eff 3 Feb 1600Z

GUILIN, PR OF CHINA

RNAV SID

Apt Elev  
571'

Trans level: FL118    Trans alt:    9850'  
10830' 1031 hPa or above  
8860' 979 hPa or below



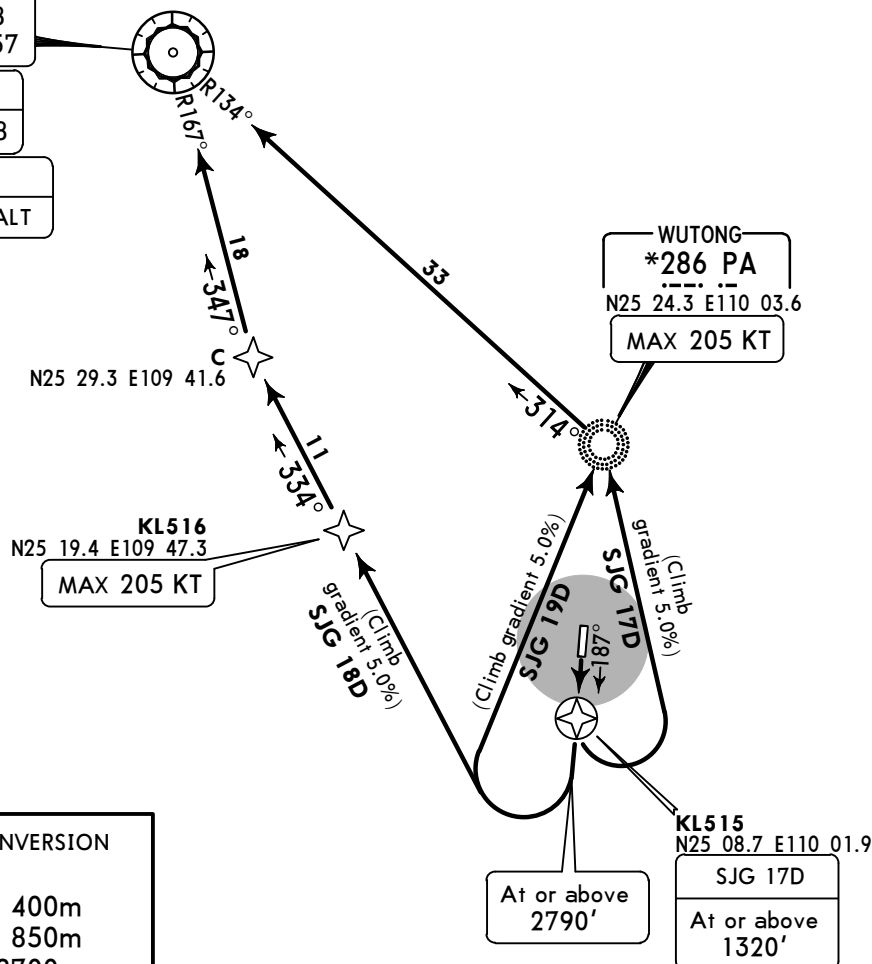
**SJG 17D, SJG 18D  
SJG 19D**  
**RWY 19 RNAV DEPARTURES**  
RNP 1 / RNAV 1  
GNSS REQUIRED  
RADAR REQUIRED (RNAV 1 ONLY)

**SANJIANG**  
D \*116.8 SJG  
... ..  
N25 46.6 E109 36.6

CAT C & D  
At FL138  
or at FL157

CAT B  
At FL118

CAT A  
At enroute ALT



**FT/METER CONVERSION**

QNH	
1320'	400m
2790'	850m
8860'	2700m
9850'	3000m
10830'	3300m

**FL CONVERSION**

FL118	FL3600m
FL138	FL4200m
FL157	FL4800m

Gnd speed-KT	75	100	150	200	250	300
5.0% V/V (fpm)	380	506	760	1013	1266	1519

**SID**

**ROUTING**

<b>SJG 17D</b> By ATC	KL515 (1320'+) - PA (K205-) - SJG (CAT C & D: FL138/157; CAT B: FL118; CAT A: enroute ALT).
<b>SJG 18D</b> By ATC	(2790'+) - KL516 (K205-) - C - SJG (CAT C & D: FL138/157; CAT B: FL118; CAT A: enroute ALT).
<b>SJG 19D</b>	(2790'+) - PA (K205-) - SJG (CAT C & D: FL138/157; CAT B: FL118; CAT A: enroute ALT).

**ZGKL/KWL**  
**LIANGJIANG**

**JEPPesen**  
10 JUL 15 **(10-3H)**

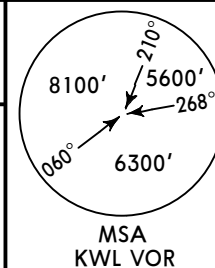
**GUILIN, PR OF CHINA**  
**SID**

**Eff 22 Jul 1600Z**

**SID**

Apt Elev  
**571'**

Trans level: FL118    Trans alt: 9850'  
10830' 1031 hPa or above  
8860' 979 hPa or below



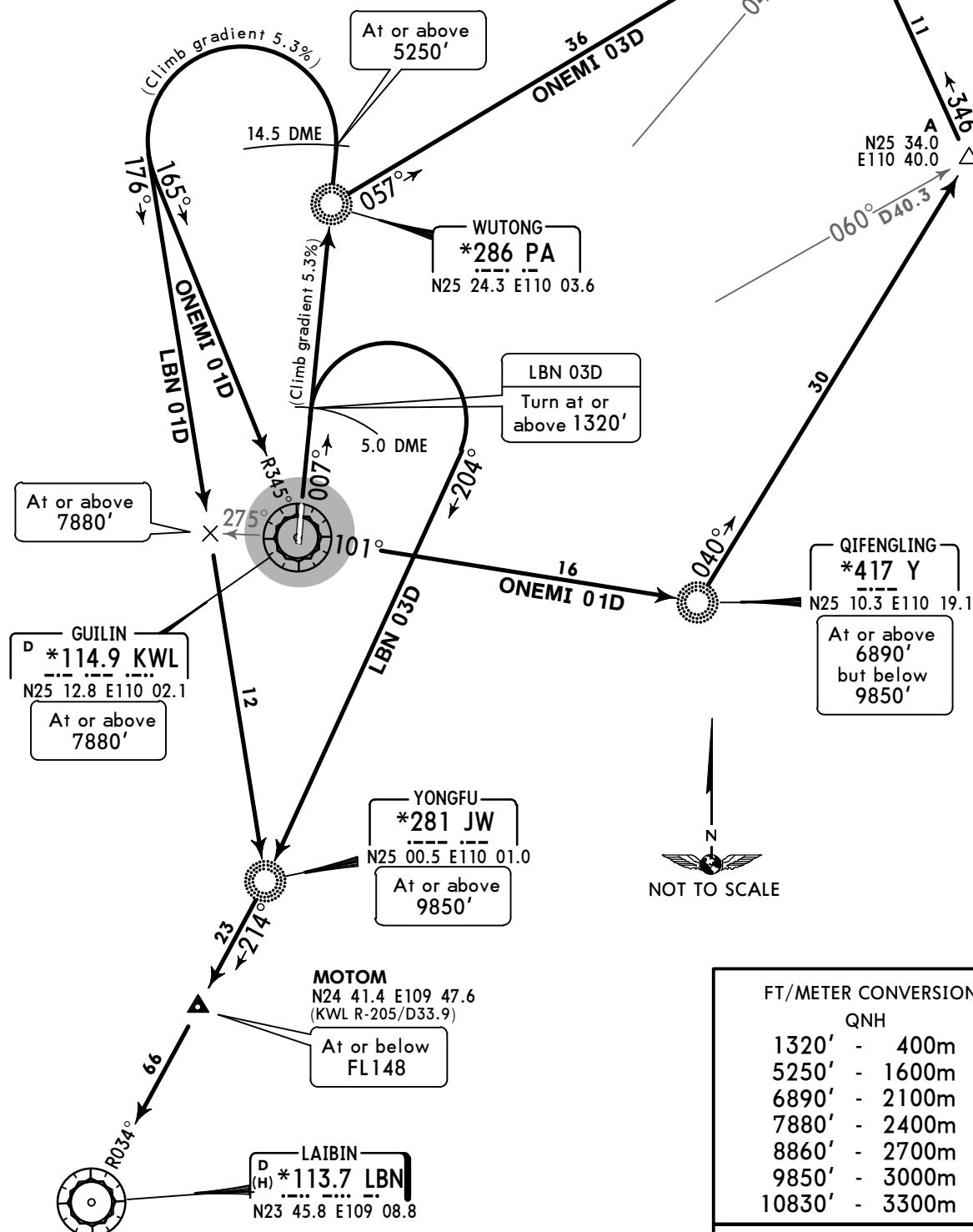
**LBN 01D, ONEMI 01D [ONE01D]**

**LBN 03D, ONEMI 03D [ONE03D]**

**BY ATC**

**RWY 01 DEPARTURES**

**SPEED RESTRICTION**  
Departure turn  
MAX 205 KT.



**FT/METER CONVERSION**  
QNH

1320'	-	400m
5250'	-	1600m
6890'	-	2100m
7880'	-	2400m
8860'	-	2700m
9850'	-	3000m
10830'	-	3300m

**FL CONVERSION**

FL118	FL3600m
FL148	FL4500m

Gnd speed-KT	75	100	150	200	250	300
5.3% V/V (fpm)	403	537	805	1073	1342	1610



ZGKL/KWL  
LIANGJIANG

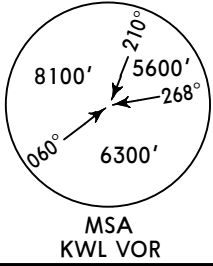
JEPPESEN  
10 JUL 15 (10-3J)

Eff 22 Jul 1600Z

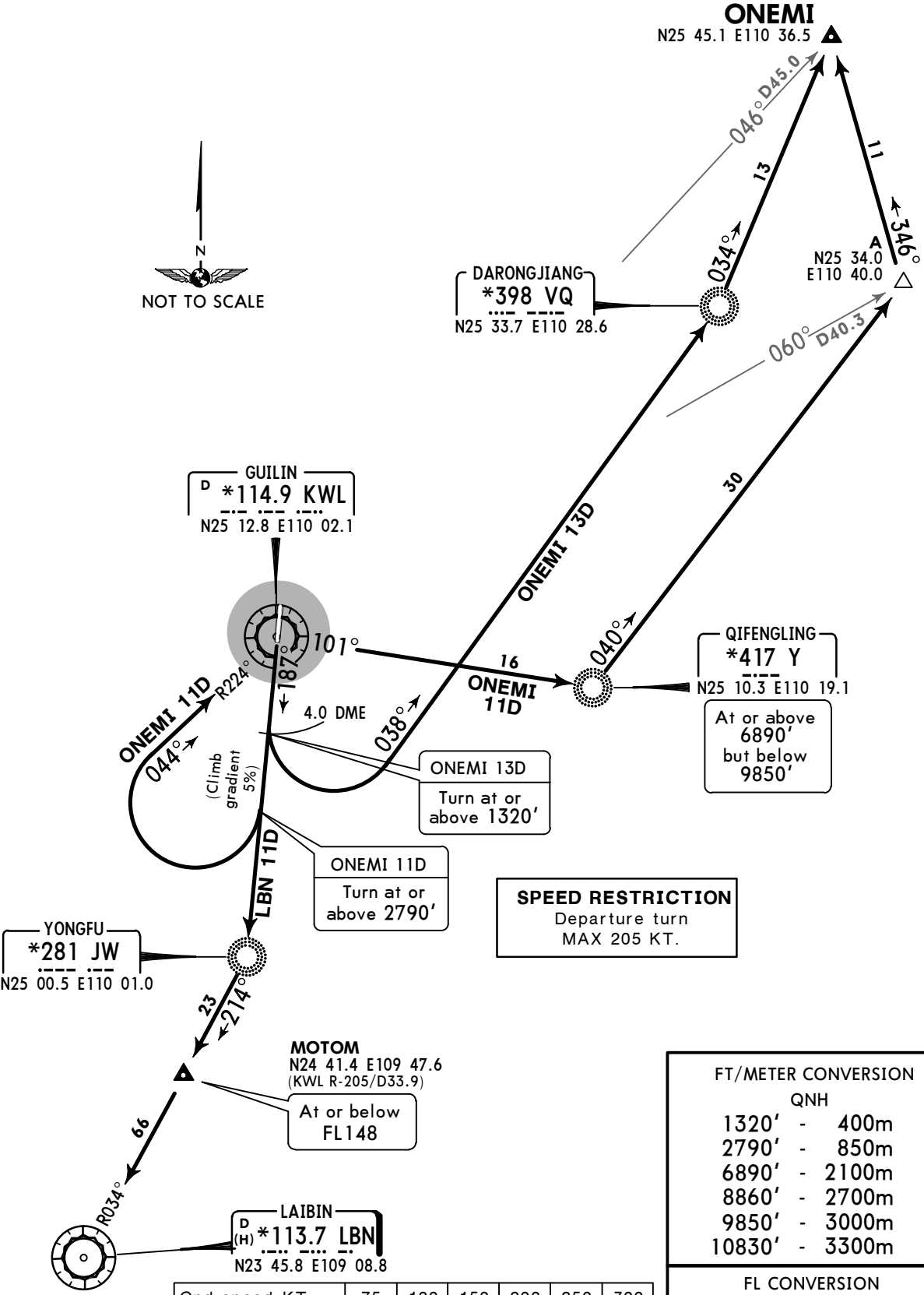
GUILIN, PR OF CHINA  
SID

Apt Elev  
571'

Trans level: FL118 Trans alt: 9850'  
10830' 1031 hPa or above  
8860' 979 hPa or below



LBN 11D, ONEMI 11D [ONE11D]  
ONEMI 13D [ONE13D]  
BY ATC  
RWY 19 DEPARTURES



**SPEED RESTRICTION**  
Departure turn  
MAX 205 KT.

FT/METER CONVERSION	
QNH	
1320'	400m
2790'	850m
6890'	2100m
8860'	2700m
9850'	3000m
10830'	3300m
FL CONVERSION	
FL118	FL3600m
FL148	FL4500m

Gnd speed-KT	75	100	150	200	250	300
5% V/V (fpm)	380	506	760	1013	1266	1519

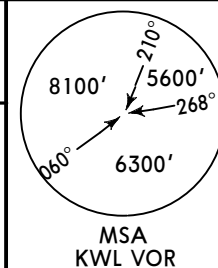
**ZGKL/KWL**  
**LIANGJIANG**

**JEPPESEN**  
10 JUL 15 **(10-3K)**

**GUILIN, PR OF CHINA**  
**SID**

Apt Elev  
**571'**

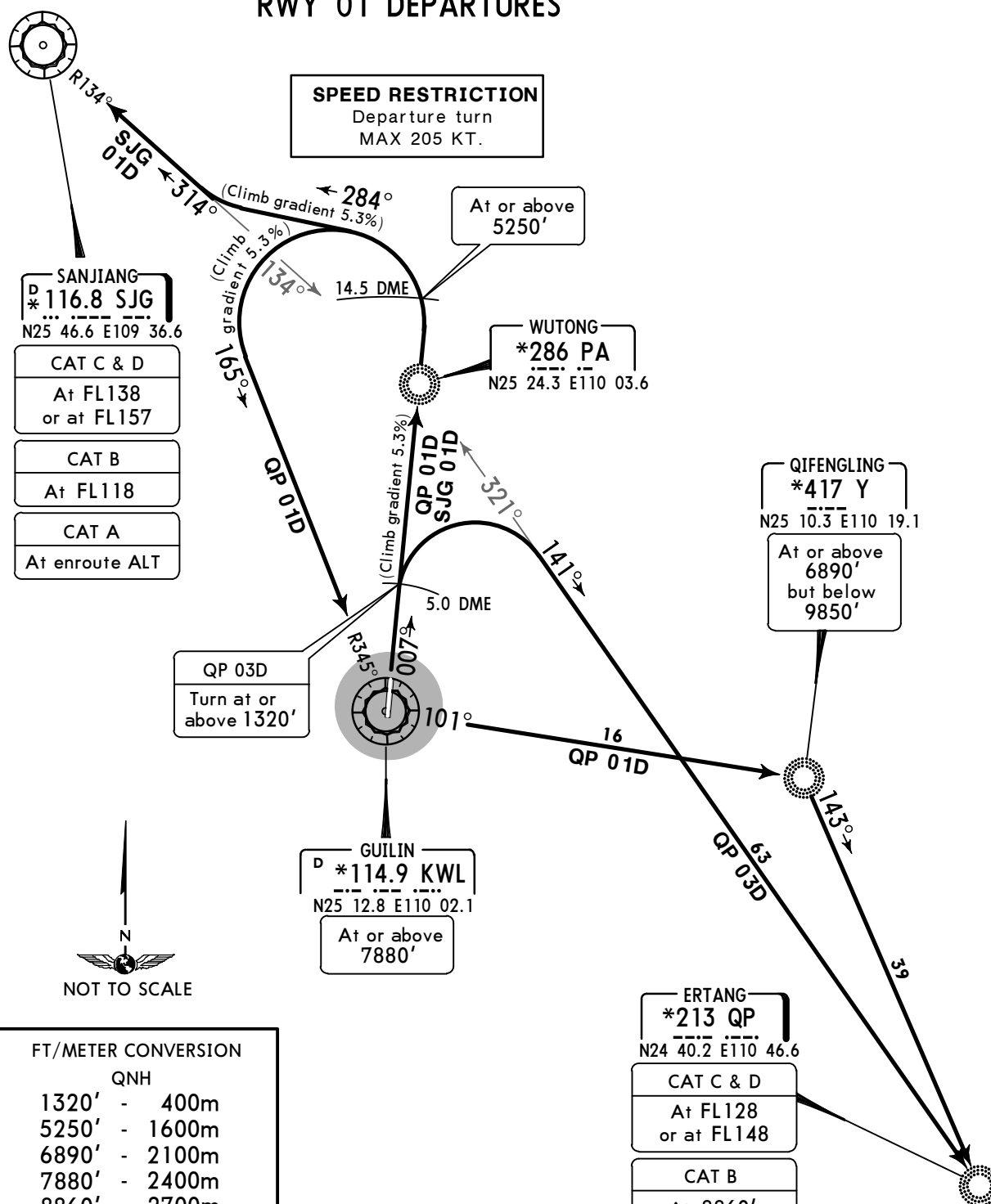
Trans level: FL118 Trans alt: 9850'  
10830' 1031 hPa or above  
8860' 979 hPa or below



**QP 01D, SJG 01D**

**QP 03D**  
**BY ATC**

**RWY 01 DEPARTURES**



**FT/METER CONVERSION**

QNH	
1320'	400m
5250'	1600m
6890'	2100m
7880'	2400m
8860'	2700m
9850'	3000m
10830'	3300m

**FL CONVERSION**

FL118	FL3600m
FL128	FL3900m
FL138	FL4200m
FL148	FL4500m
FL157	FL4800m

Gnd speed-KT	75	100	150	200	250	300
5.3% V/V (fpm)	403	537	805	1073	1342	1610

**ZGKL/KWL**  
**LIANGJIANG**

**JEPPESSEN**

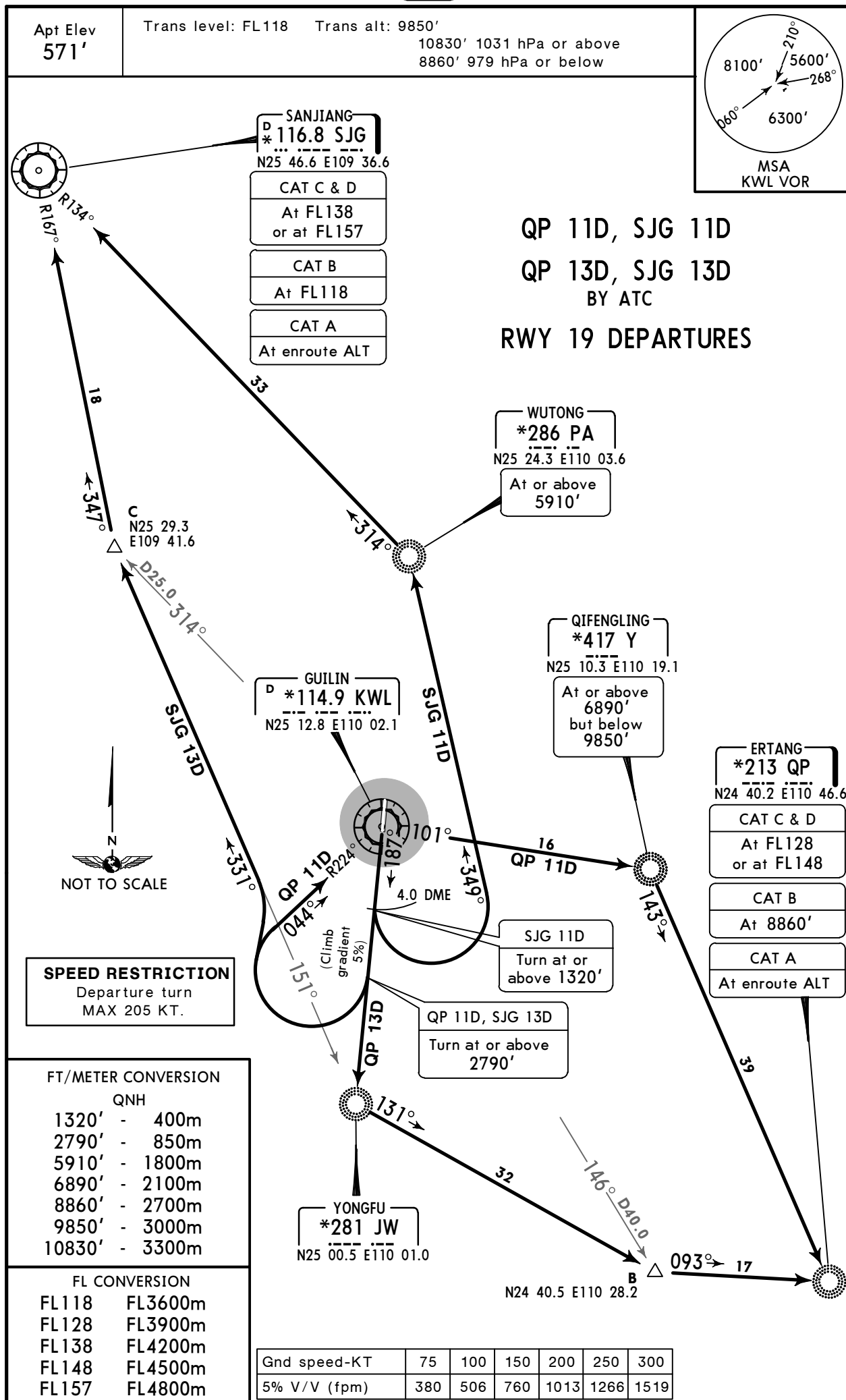
**GUILIN, PR OF CHINA**

10 JUL 15

10-3L

Eff 22 Jul 1600Z

**SID**



CHANGES: None.

© JEPPESSEN, 2015. ALL RIGHTS RESERVED.

ZGKL/KWL

Apt Elev 571'  
N25 13.0 E110 02.3

JEPPESSEN

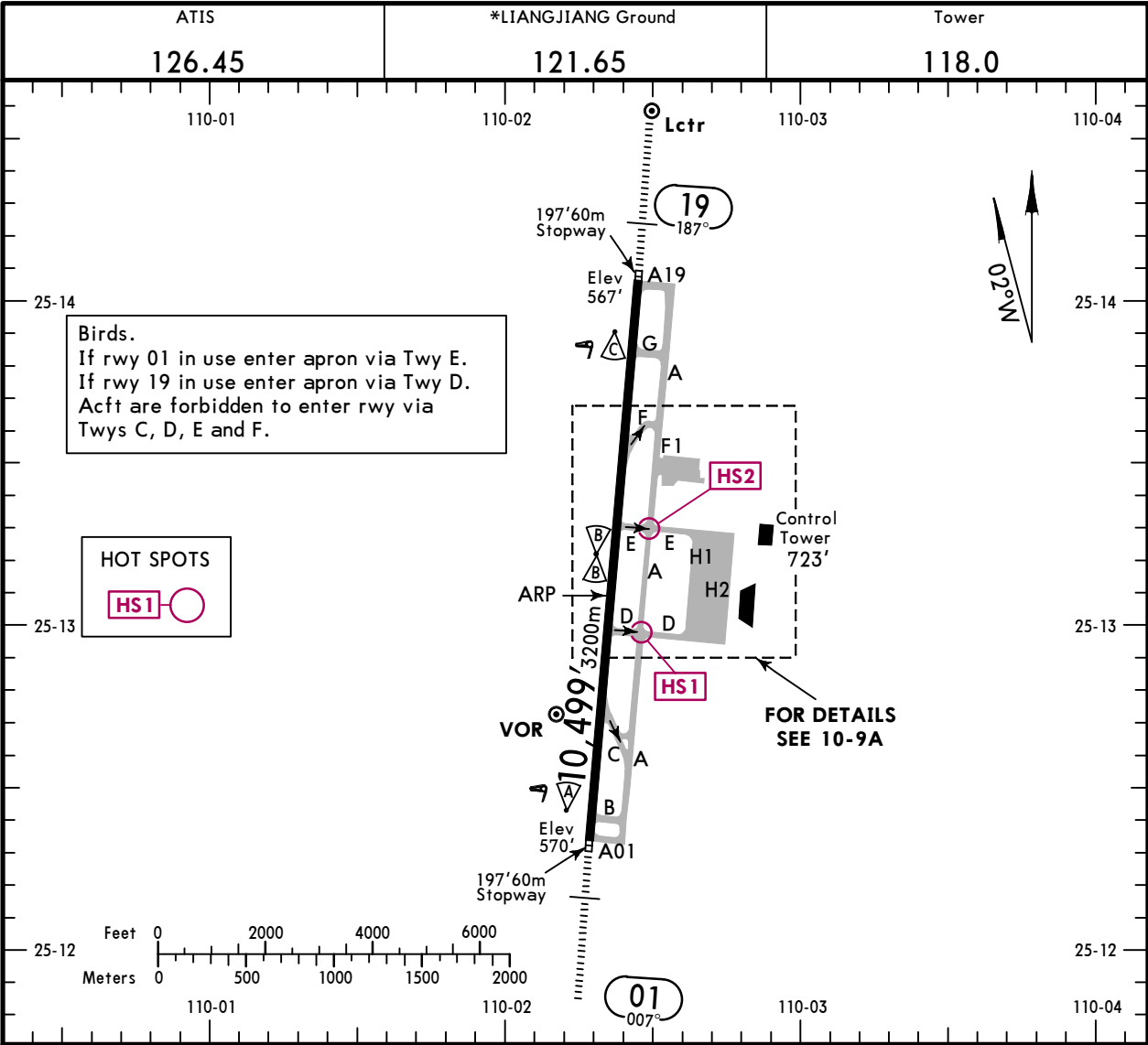
12 JUN 15

10-9

Eff 24 Jun 1600Z

GUILIN, PR OF CHINA

LIANGJIANG



ADDITIONAL RUNWAY INFORMATION					
RWY				USABLE LENGTHS	
				LANDING BEYOND	
				Threshold	TAKE-OFF
01					
19	HIRL (60m) CL (30m) HIALS SFL PAPI-L (3.0°) RVR			9328' 2843m	148'
				9436' 2876m	45m

Standard		
TAKE-OFF		
	RL	NIL (DAY only)
2 TURB Eng or 3 & 4 Eng	RVR 400m	RVR 500m
Other	VIS 1600m	

ZGKL/KWL

JEPPESEN

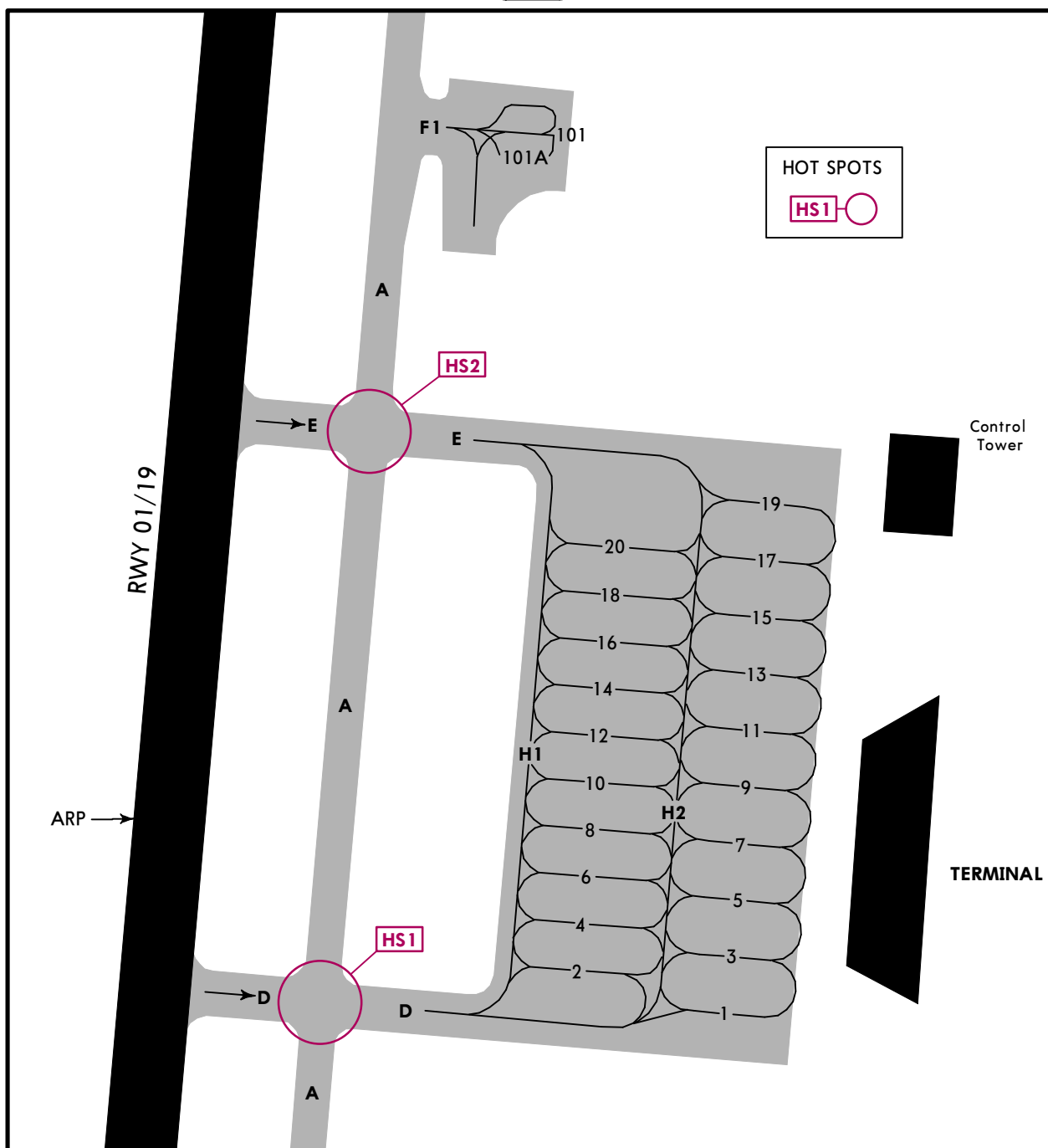
GUILIN, PR OF CHINA

12 JUN 15

10-9A

Eff 24 Jun 1600Z

LIANGJIANG



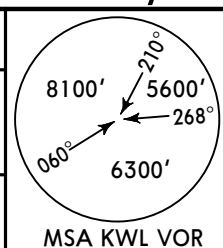
If rwy 01 in use exit apron via twy D.  
 If rwy 19 in use exit apron via twy E.  
 Acft prohibited entering rwy 01/19 via portion of twy D and E between twy A and rwy.  
 Stands 101 and 101A entry by follow-me car.  
 On stand 101 push-back required for A380.

**ZGKL/KWL**  
**LIANGJIANG**

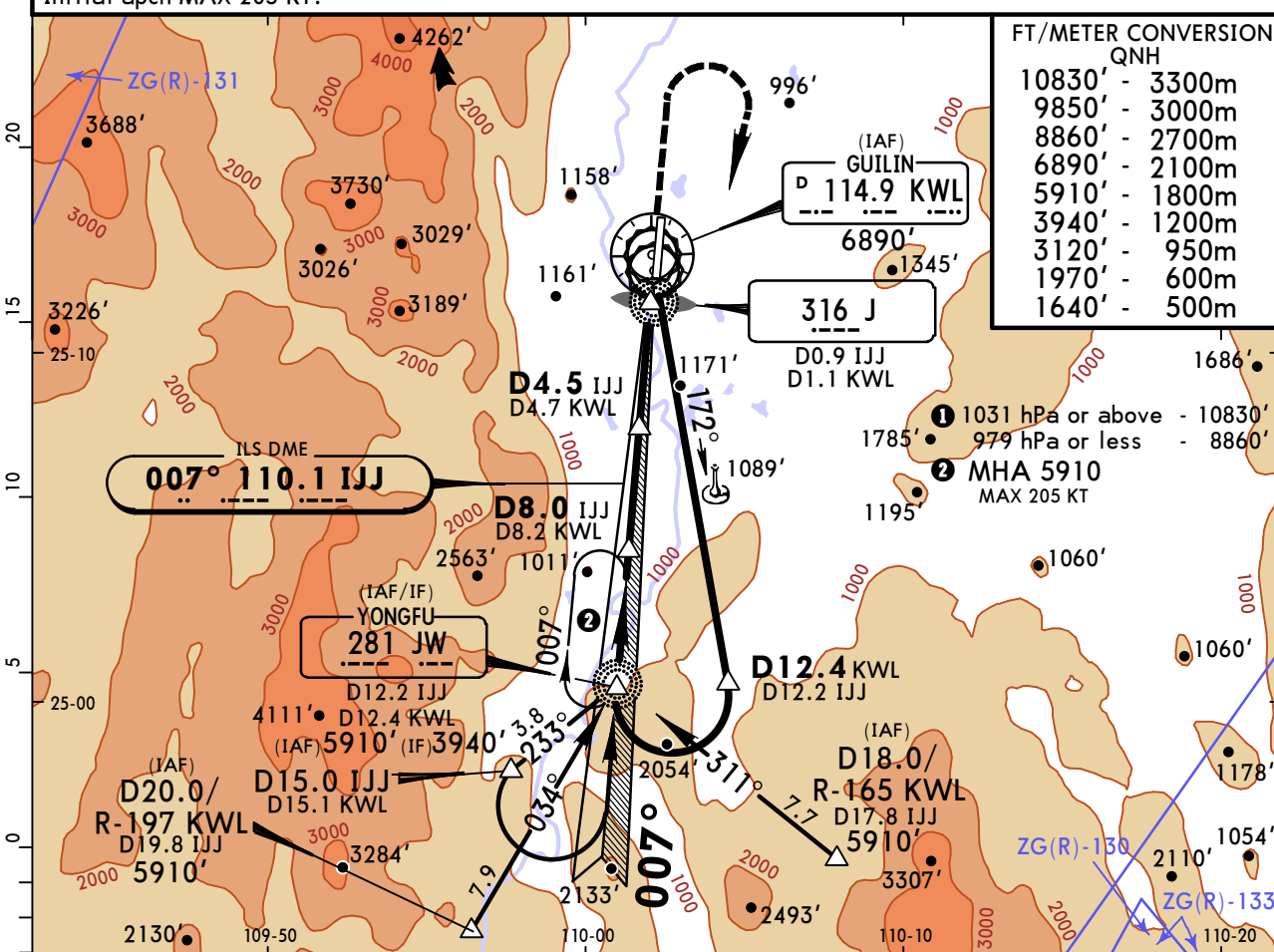
**JEPPESSEN**  
29 JAN 16  
**Eff 3 Feb 1600Z** (11-1)

**GUILIN, PR OF CHINA**  
**ILS DME Z Rwy 01**

ATIS <b>126.45</b>	GUILIN Approach (R) <b>120.85</b>	LIANGJIANG Tower <b>118.0</b>	*Ground <b>121.65</b>
LOC IJJ <b>110.1</b>	Final Apch Crs <b>007°</b>	GS No altitude published	ILS DA(H) Refer to Minimums
			Apt Elev 571' Rwy 570'
<b>MISSED APCH: Climb STRAIGHT AHEAD to 1640', then turn RIGHT to reach JW NDB at 5910'.</b>			
MSA KWL VOR			



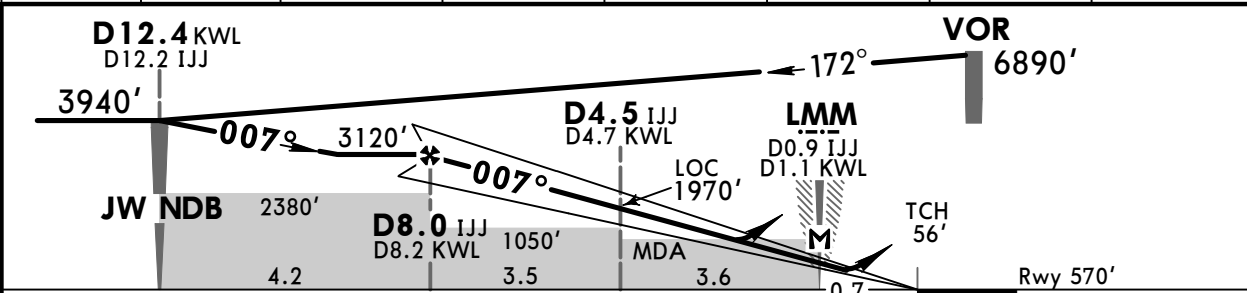
Alt Set: hPa Rwy Elev: 21 hPa Trans level: FL 118 Trans alt: 9850' ①  
Initial apch MAX 205 KT.



**FT/METER CONVERSION**  
QNH

10830'	-	3300m
9850'	-	3000m
8860'	-	2700m
6890'	-	2100m
5910'	-	1800m
3940'	-	1200m
3120'	-	950m
1970'	-	600m
1640'	-	500m

LOC (GS out)	IJJ DME	7.0	6.0	5.0	4.0	3.0	2.0
	ALTITUDE	2800'	2480'	2160'	1840'	1520'	1210'



Gnd speed-Kts	70	90	100	120	140	160			
ILS GS or LOC Descent Angle	3.00°	372	478	531	637	743	849		
MAP at LMM/D0.9 IJJ/D1.1 KWL									


Standard				STRAIGHT-IN LANDING RWY 01		CIRCLE-TO-LAND			
ILS				LOC (GS out)		East of runway (preferential)		West of runway	
DA(H) ABC: 770' (200')				CDFA					
D: 783' (213')				MDA(H) 940' (370')					
FULL		Limited	ALS out	ALS out		Max Kts	MDA(H) _____ VIS _____	MDA(H) _____ VIS _____	
A	RVR 550m VIS 800m	RVR 750m VIS 800m	1200m	1300m	1500m	100	1200' (629') 2600m	1200' (629') 2600m	
B						135	1220' (649') 2600m	1510' (939') 2600m	
C						180	1350' (779') 3200m	1920' (1349') 4400m	
D						205	1460' (889') 4400m	2560' (1989') 5000m	

**ZGKL/KWL**  
**LIANGJIANG**

29 JAN 16  
Eff 3 Feb 1600Z

(11-2)

GUILIN, PR OF CHINA  
RNAV ILS DME Y Rwy 01

ATIS 126.45		GUILIN Approach (R) 120.85		LIANGJIANG Tower 118.0		*Ground 121.65		
LOC IJJ 110.1	Final Apch Crs 007°	GS No altitude published	ILS DA(H) Refer to Minimums		Apt Elev 571'  Rwy 570'			

**MISSED APCH:** Climb STRAIGHT AHEAD to 1640', then turn RIGHT and track 187° to KL412 at 4930' or as directed. MAX 205 KT.

MSA ARP

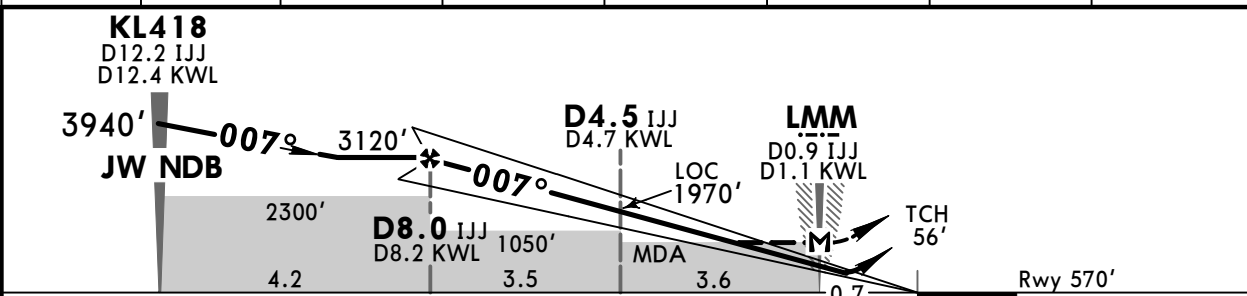
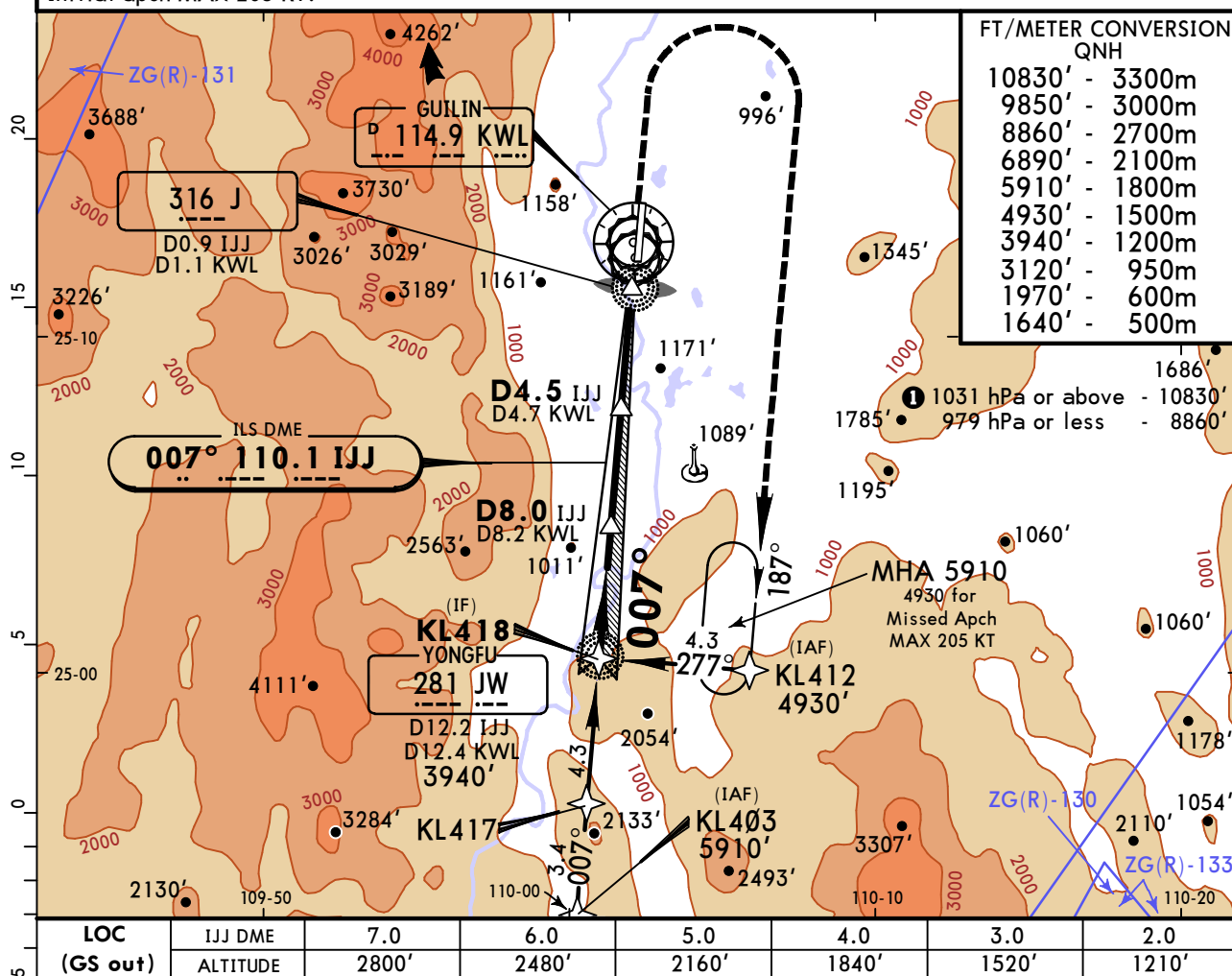
Alt Set: hPa

Rwy Elev: 21 hPa

Trans level: FL 118

Trans alt: 9850' ①

Initial apch MAX 205 KT.



Gnd speed-Kts	70	90	100	120	140	160		<b>1640'</b> 	<b>4930'</b>  RT	<b>KL412</b>
ILS GS or LOC Descent Angle      3.00°	372	478	531	637	743	849				
MAP at LMM/D0.9 IJJ/D1.1 KWL										

Standard		STRAIGHT-IN LANDING RWY 01				CIRCLE-TO-LAND			
		ILS DA(H) ABC: <b>770'</b> (200') D: <b>783'</b> (213')		LOC (GS out) CDFA MDA(H) <b>940'</b> (370')		East of runway (preferential)		West of runway	
		FULL	Limited	ALS out		ALS out	Max Kts	MDA(H) _____ VIS _____	MDA(H) _____ VIS _____
A	RVR 550m VIS 800m	RVR 750m VIS 800m	1200m	1300m	1500m	100	<b>1200'</b> (629') 2600m	<b>1200'</b> (629') 2600m	
B						135	<b>1220'</b> (649') 2600m	<b>1510'</b> (939') 2600m	
C					1700m	180	<b>1350'</b> (779') 3200m	<b>1920'</b> (1349') 4400m	
D						205	<b>1460'</b> (889') 4400m	<b>2560'</b> (1989') 5000m	

CHANGES: Fix added.

© JEPPESEN, 2015, 2016. ALL RIGHTS RESERVED.



**ZGKL/KWL**  
**LIANGJIANG**

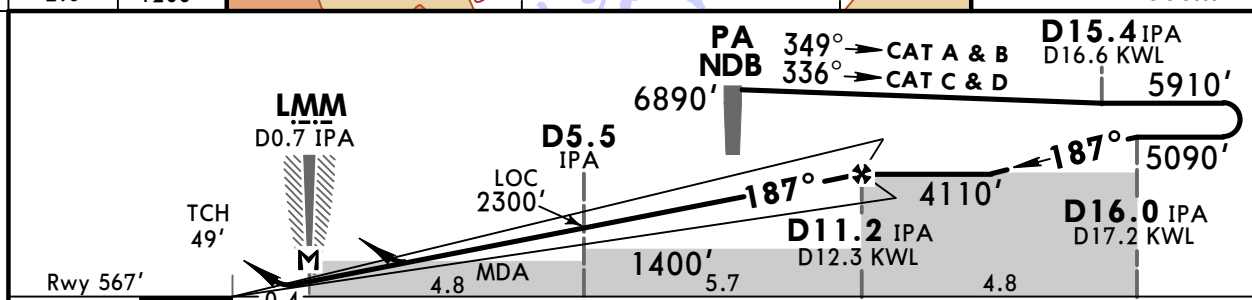
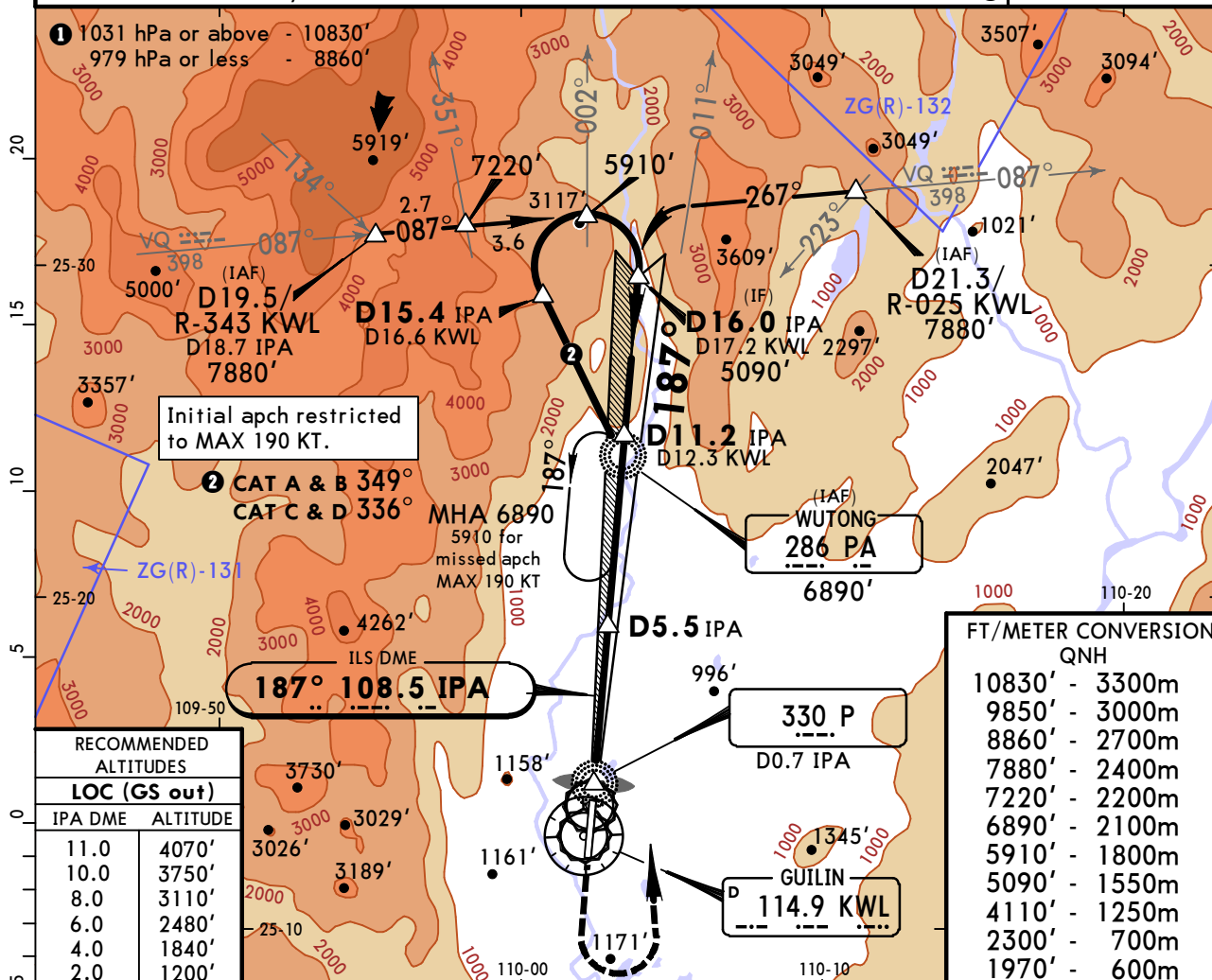
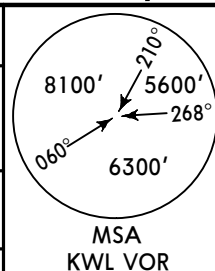
12 JUN 15  
Eff 24 Jun 1600Z

**JEPPESSEN**

(11-3)

**GUILIN, PR OF CHINA**  
**ILS DME Z Rwy 19**

ATIS <b>126.45</b>	GUILIN Approach (R) <b>120.85</b>	LIANGJIANG Tower <b>118.0</b>	*Ground <b>121.65</b>
LOC IPA <b>108.5</b>	Final Apch Crs <b>187°</b>	GS No altitude published	ILS DA(H) Refer to Minimums
<b>MISSED APCH: Climb STRAIGHT AHEAD to 1970', then turn LEFT to reach PA NDB at 5910' and join approach or holding procedure.</b>		Apt Elev 571' Rwy 567'	
Alt Set: hPa	Rwy Elev: 21 hPa	Trans level: FL 118	Trans alt: 9850' ①



Gnd speed-Kts	70	90	100	120	140	160	HIALS	1970'	5910'	PA
ILS GS or LOC Descent Angle	3.00°	372	478	531	637	743	849	PAPI	↑	286
MAP at LMM/D0.7 IPA									LT	

Standard		STRAIGHT-IN LANDING RWY 19				CIRCLE-TO-LAND			
ILS		LOC (GS out)				East of runway (preferential)		West of runway	
DA(H)		ABC: <b>767'</b> (200')		CDFA					
		D: <b>780'</b> (213')		MDA(H) <b>990'</b> (423')					
FULL		Limited		ALS out		Max Kts	MDA(H) _____ VIS _____	MDA(H) _____ VIS _____	
A	RVR 550m VIS 800m	RVR 750m VIS 800m	1200m	1600m	1600m	100	<b>1200'</b> (629') 2600m	<b>1200'</b> (629') 2600m	
B						135	<b>1220'</b> (649') 2600m	<b>1510'</b> (939') 2600m	
C						180	<b>1350'</b> (779') 3200m	<b>1920'</b> (1349') 4400m	
D						205	<b>1460'</b> (889') 4400m	<b>2560'</b> (1989') 5000m	





**ZGKL/KWL**  
**LIANGJIANG**

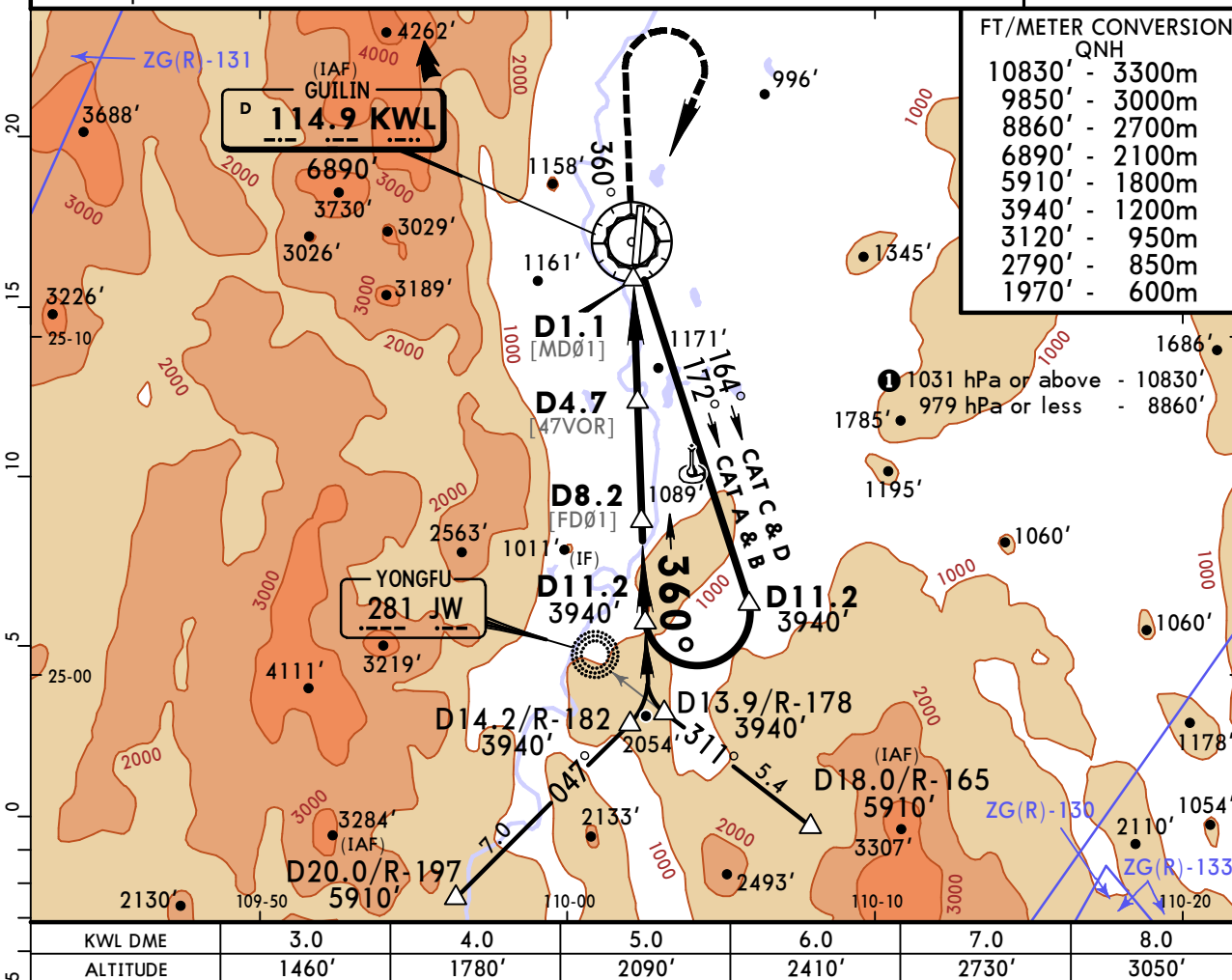
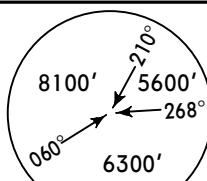
12 JUN 15  
Eff 24 Jun 1600Z

(13-1)

MISSED APCH CLIMB  
GRAD MIN 3.0%

**GUILIN, PR OF CHINA**  
**VOR DME Rwy 01**

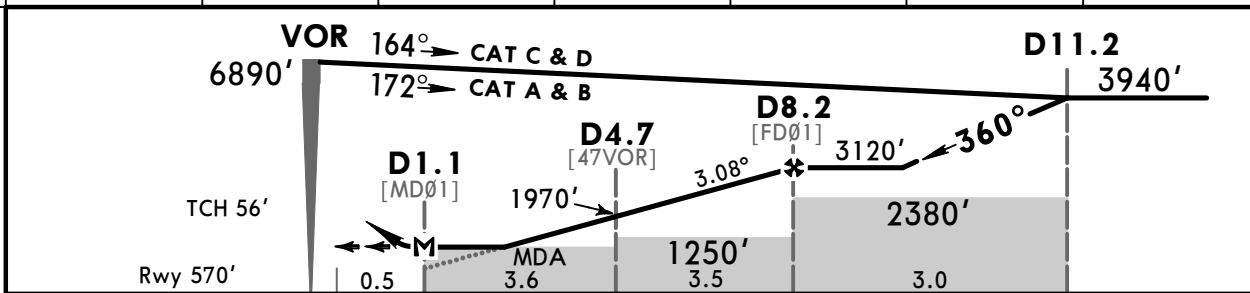
ATIS 126.45	GUILIN Approach (R) 120.85	LIANGJIANG Tower 118.0	*Ground 121.65
VOR KWL 114.9	Final Apch Crs 360°	Procedure Alt D8.2 3120' (2550')	MDA(H) 1150' (580')
Apt Elev 571' Rwy 570'			
<b>MISSED APCH: Climb STRAIGHT AHEAD on track 360° to 2790', then turn RIGHT to reach VOR at 5910', or as directed.</b>			
Alt Set: hPa	Rwy Elev: 21 hPa	Trans level: FL 118	Trans alt: 9850' ①
Initial apch MAX 205 KT.			MSA KWL VOR



FT/METER CONVERSION  
QNH

10830'	-	3300m
9850'	-	3000m
8860'	-	2700m
6890'	-	2100m
5910'	-	1800m
3940'	-	1200m
3120'	-	950m
2790'	-	850m
1970'	-	600m

① 1031 hPa or above - 10830'  
1785' 979 hPa or less - 8860'



Gnd speed-Kts	70	90	100	120	140	160
Descent Angle	3.08°	38	490	545	654	763
MAP at D1.1						

HIALS	2790'	on 360°
PAPI		

Standard		STRAIGHT-IN LANDING RWY 01		CIRCLE-TO-LAND			
		Missed apch climb grad min 3.0%		East of runway (preferential)		West of runway	
		CDFA					
		MDA(H) 1150' (580')					
		ALS out		Max Kts	MDA(H) _____ VIS _____	MDA(H) _____ VIS _____	
A	2500m			100	1200' (629') 2600m	1200' (629') 2600m	
B				135	1220' (649') 2600m	1510' (939') 2600m	
C				180	1350' (779') 3200m	1920' (1349') 4400m	
D				205	1460' (889') 4400m	2560' (1989') 5000m	

CHANGES: Rwy elevation. Recommended altitudes. Minimums.

© JEPPESEN, 1999, 2015. ALL RIGHTS RESERVED.



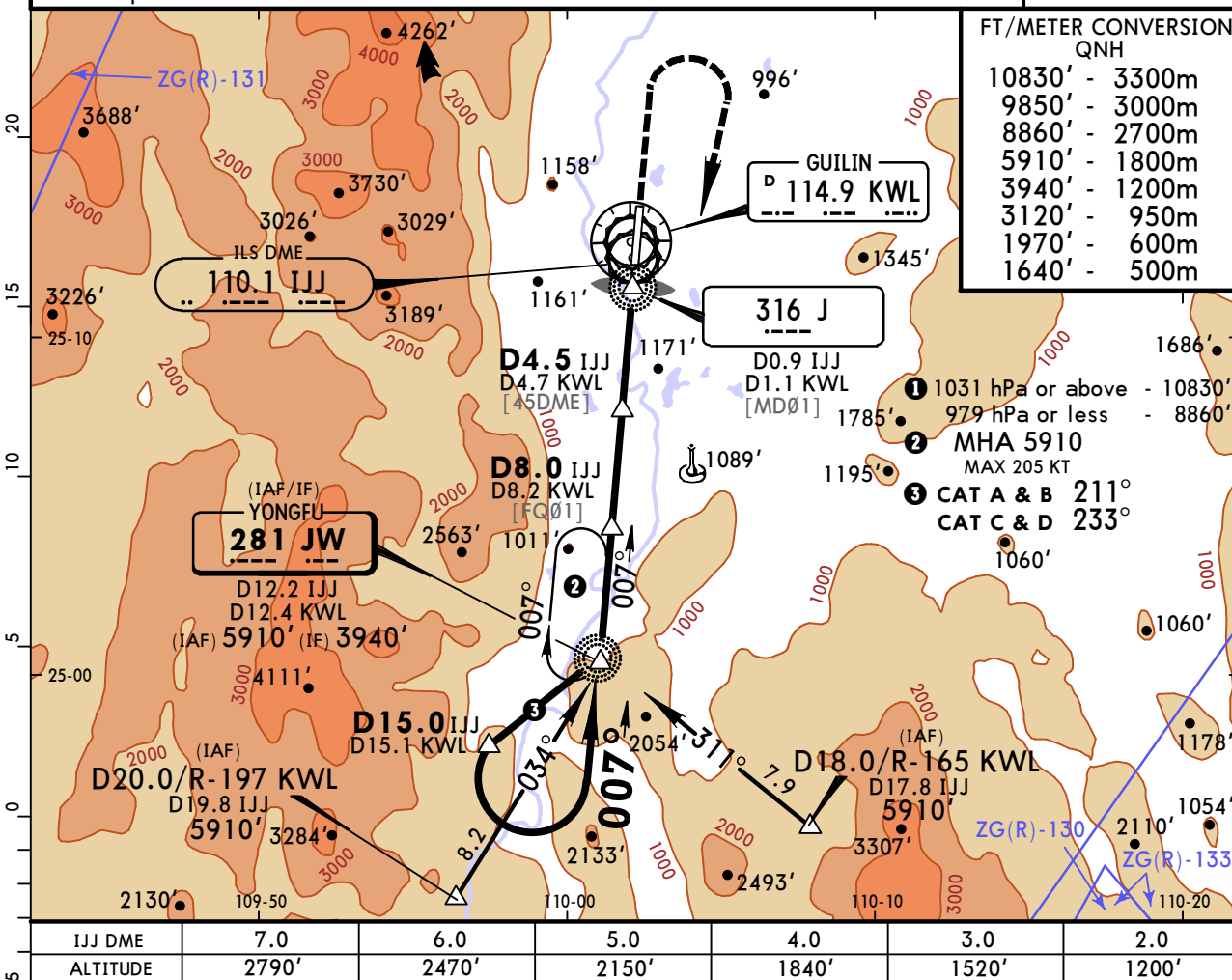
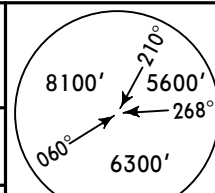
**ZGKL/KWL**  
**LIANGJIANG**

12 JUN 15  
Eff 24 Jun 1600Z

16-1

**GUILIN, PR OF CHINA**  
**NDB DME Rwy 01**

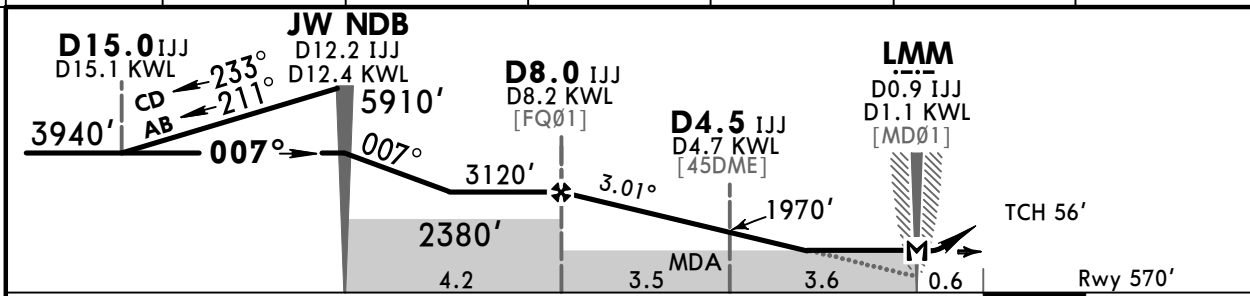
ATIS <b>126.45</b>	GUILIN Approach (R) <b>120.85</b>	LIANGJIANG Tower <b>118.0</b>	*Ground <b>121.65</b>
NDB JW <b>281</b>	Final Apch Crs <b>007°</b>	Procedure Alt <b>D8.0 IJJ</b> <b>3120'</b> (2550')	MDA(H) <b>1120'</b> (550')
MISSED APCH: Climb STRAIGHT AHEAD to 1640', then turn RIGHT to reach JW NDB at 5910'.			Apt Elev 571' Rwy 570'
Alt Set: hPa	Rwy Elev: 21 hPa	Trans level: FL 118	Trans alt: 9850' ①
Initial apch MAX 205 KT.			MSA KWL VOR



FT/METER CONVERSION  
QNH

10830'	-	3300m
9850'	-	3000m
8860'	-	2700m
5910'	-	1800m
3940'	-	1200m
3120'	-	950m
1970'	-	600m
1640'	-	500m

- ① 1031 hPa or above - 10830'
- ② 979 hPa or less - 8860'
- ③ MHA 5910  
MAX 205 KT  
CAT A & B 211°  
CAT C & D 233°



Gnd speed-Kts	70	90	100	120	140	160	HIALS	1640'	5910'	JW
Descent Angle	3.01°	373	479	532	639	745	PAPI	↑	RT	281
MAP at LMM/D0.9 IJJ/D1.1 KWL										

Standard STRAIGHT-IN LANDING RWY 01				CIRCLE-TO-LAND			
CDFA				East of runway (preferential)		West of runway	
MDA(H) 1120' (550')				Max Kts	MDA(H) VIS	MDA(H) VIS	
A B C D	2300m	ALS out		100	1200' (629') 2600m	1200' (629') 2600m	
		2300m		135	1220' (649') 2600m	1510' (939') 2600m	
		2400m		180	1350' (779') 3200m	1920' (1349') 4400m	
				205	1460' (889') 4400m	2560' (1989') 5000m	



**ZGKL/KWL**  
**LIANGJIANG**

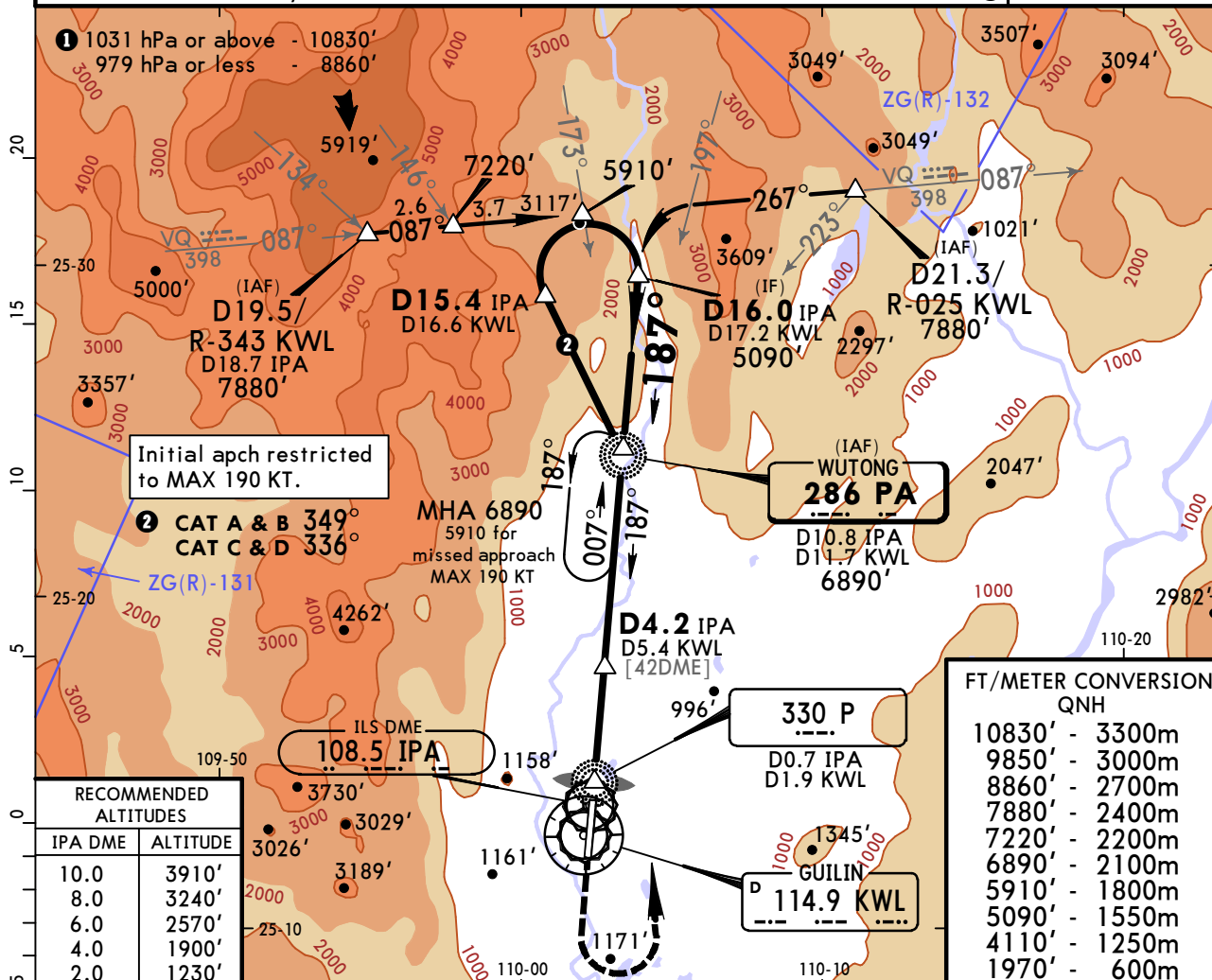
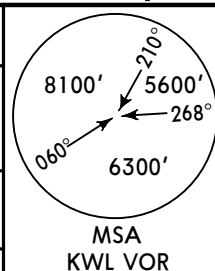
12 JUN 15  
Eff 24 Jun 1600Z

**JEPPESSEN**

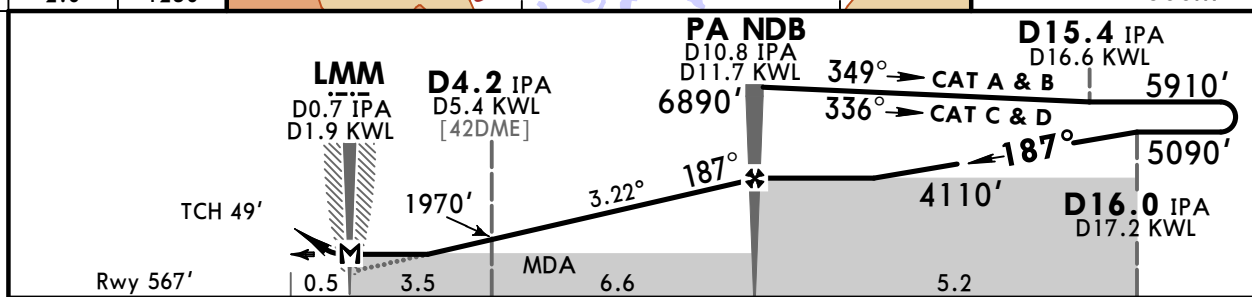
16-2

**GUILIN, PR OF CHINA**  
**NDB DME Rwy 19**

ATIS <b>126.45</b>	GUILIN Approach (R) <b>120.85</b>	LIANGJIANG Tower <b>118.0</b>	*Ground <b>121.65</b>
NDB PA <b>286</b>	Final Apch Crs <b>187°</b>	Procedure Alt PA NDB <b>4110'</b> (3543')	MDA(H) <b>1170'</b> (603')
Apt Elev 571' Rwy 567'			
<b>MISSED APCH: Climb STRAIGHT AHEAD to 1970', then turn LEFT to reach PA NDB at 5910' and join approach or holding procedure.</b>			
Alt Set: hPa	Rwy Elev: 21 hPa	Trans level: FL 118	Trans alt: 9850' ①



FT/METER CONVERSION	QNH
10830'	3300m
9850'	3000m
8860'	2700m
7880'	2400m
7220'	2200m
6890'	2100m
5910'	1800m
5090'	1550m
4110'	1250m
1970'	600m



Gnd speed-Kts	70	90	100	120	140	160	HIALS	1970'	5910'	PA
Descent Angle	3.22°	399	513	570	684	798	912	↑	↑	286
MAP at LMM/D0.7 IPA/D1.9 KWL										

Standard				CIRCLE-TO-LAND			
STRAIGHT-IN LANDING RWY 19				CDFA			
				MDA(H) 1170' (603')			
				ALS out			
				2500m			
				Max Kts			
				100			
				135			
				180			
				205			
				MDA(H) VIS			
				1200' (629') 2600m			
				1220' (649') 2600m			
				1350' (779') 3200m			
				1460' (889') 4400m			
				MDA(H) VIS			
				1200' (629') 2600m			
				1510' (939') 2600m			
				1920' (1349') 4400m			
				2560' (1989') 5000m			

CHANGES: Rwy elevation. Recommended altitudes. Minimums.

© JEPPESSEN, 2000, 2015. ALL RIGHTS RESERVED.

Chart changes since cycle 18-2016

ADD = added chart, REV = revised chart, DEL = deleted chart.

ACT	PROCEDURE IDENT	INDEX	REV DATE	EFF DATE
GUILIN, (LIANGJIANG - ZGKL)				

## TERMINAL CHART CHANGE NOTICES

### Chart Change Notices for Airport ZGKL

**Type:** Terminal

**Effectivity:** Temporary

**Begin Date:** 20140724

**End Date:** Until Further Notice

(SID/STARs) KWL DME on KWL R-314 not avbl beyond 20 NM; STAR SJG 03A (10-2B) and SID SJG 13D (10-3C) affected.

### Chart Change Notices for Country CHN

**Type:** Gen Tmnl

**Effectivity:** Permanent

**Begin Date:** 20150429

**End Date:** No end date

At the following airports disregard the note "QNH on req" as QFE is avbl only: ZGNN, ZSQZ, ZSWX, ZYJM, ZYMD, ZYQQ and ZYYJ.