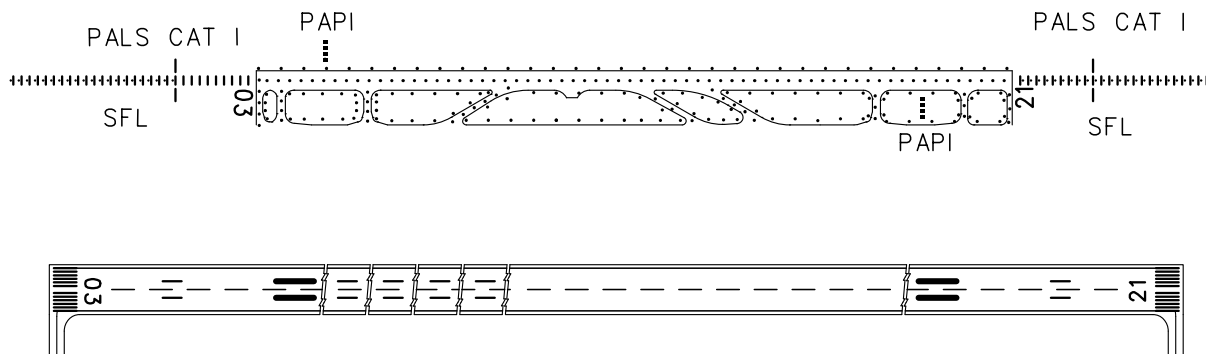
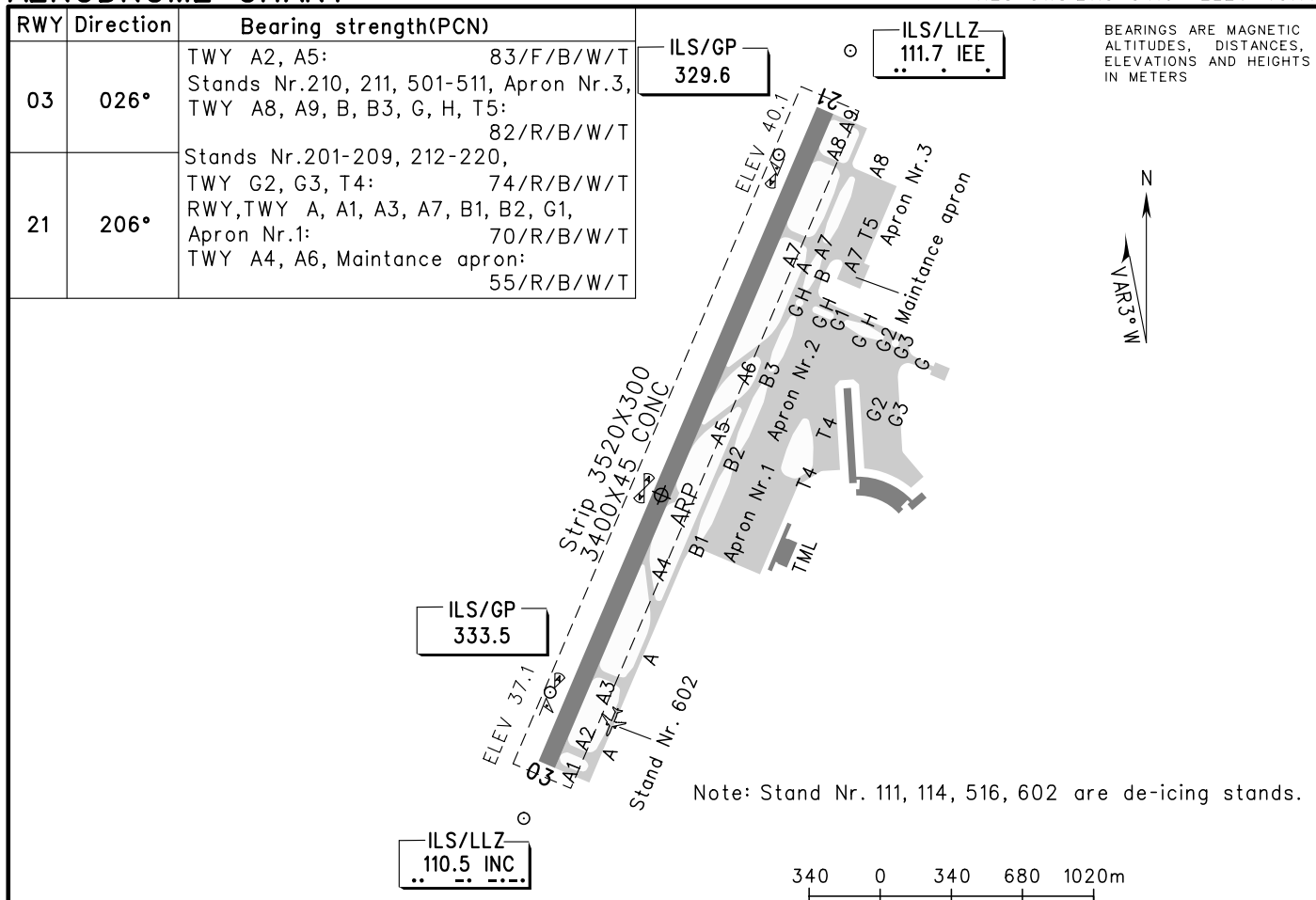


# AERODROME CHART

ATIS 128.4  
TWR 118.65(130.0)  
GND 121.7(130.0)

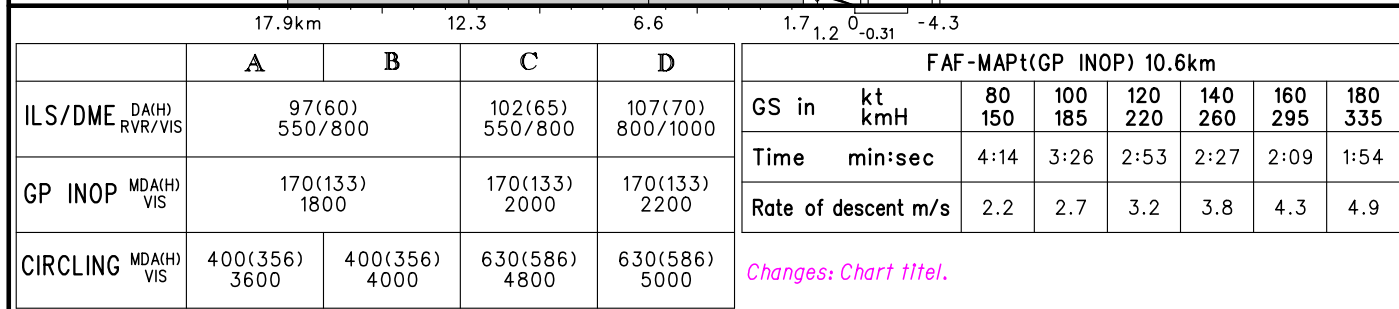
ZSCN NANCHANG/Changbei  
N28° 51.8'E115° 54.0' ELEV 43.7m



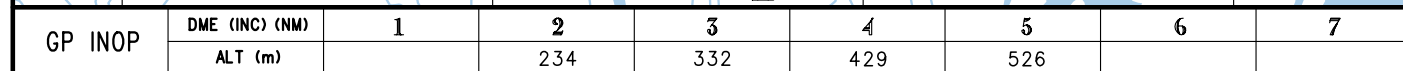
TAKE-OFF MINIMA(WITH RELIABLE ALTN)(m)					LIGHTS	
	RWY03		RWY21		RWY03	RWY21
	REDL	NIL(Day only)	REDL	NIL(Day only)		
A					PALS CAT I	PALS CAT I
B	RVR 400	RVR 500	RVR 400	RVR 500	SFL	SFL
C	VIS 800	VIS 800	VIS 800	VIS 800	PAPI	PAPI
D					REDL	REDL
					RCLL	RCLL

Changes: Center circle cancelled.

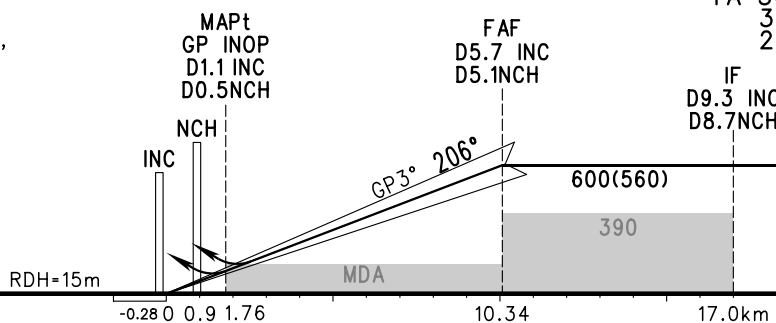
## ILS/DME z RWY03



VAR3°W AERODROME ELEV 44 ATIS 128.4 ZSCN NANCHANG/Changbei  
 HEIGHTS RELATED TO APP 119.95(123.85)  
 THR RWY21 ELEV 40 TWR 118.65(130.0) ILS/DME z RWY21



TL	3600
TA	3000
	3300(QNH≥1031HPA)
	2700(QNH≤979HPA)



	A	B	C	D	FAF-MAPt(GP INOP) 8.58km							
ILS/DME <sup>DA(H)</sup> RVR/VIS	100(60) 550/800	105(65) 550/800		110(70) 800/1000	GS in	kt kmH	80 150	100 185	120 220	140 260	160 295	180 335
	170(130) 1800		170(130) 2000	170(130) 2200	Time	min:sec	3:28	2:47	2:19	1:59	1:44	1:33
	400(356) 3600		400(356) 4000	630(586) 4800	630(586) 5000	Rate of descent m/s	2.2	2.7	3.2	3.8	4.3	4.9
CIRCLING <sup>MDA(H)</sup> VIS	400(356) 3600	400(356) 4000	630(586) 4800	630(586) 5000	Changes: Chart 11tel.							

Changes: Chart titel.

## VAR3° W

ATIS 128.4  
APP 119.95(123.85)  
TWR 118.65(130.0)

VOR/DME RWY03



Climb straight ahead to 350, turn  
LEFT to 1500 intercept RP 196°,  
then fly inbound to RP at 1500;  
or by ATC.



Changes: Procedure, conversion table, CDFA, MSA.



# INSTRUMENT APPROACH CHART-ICAO

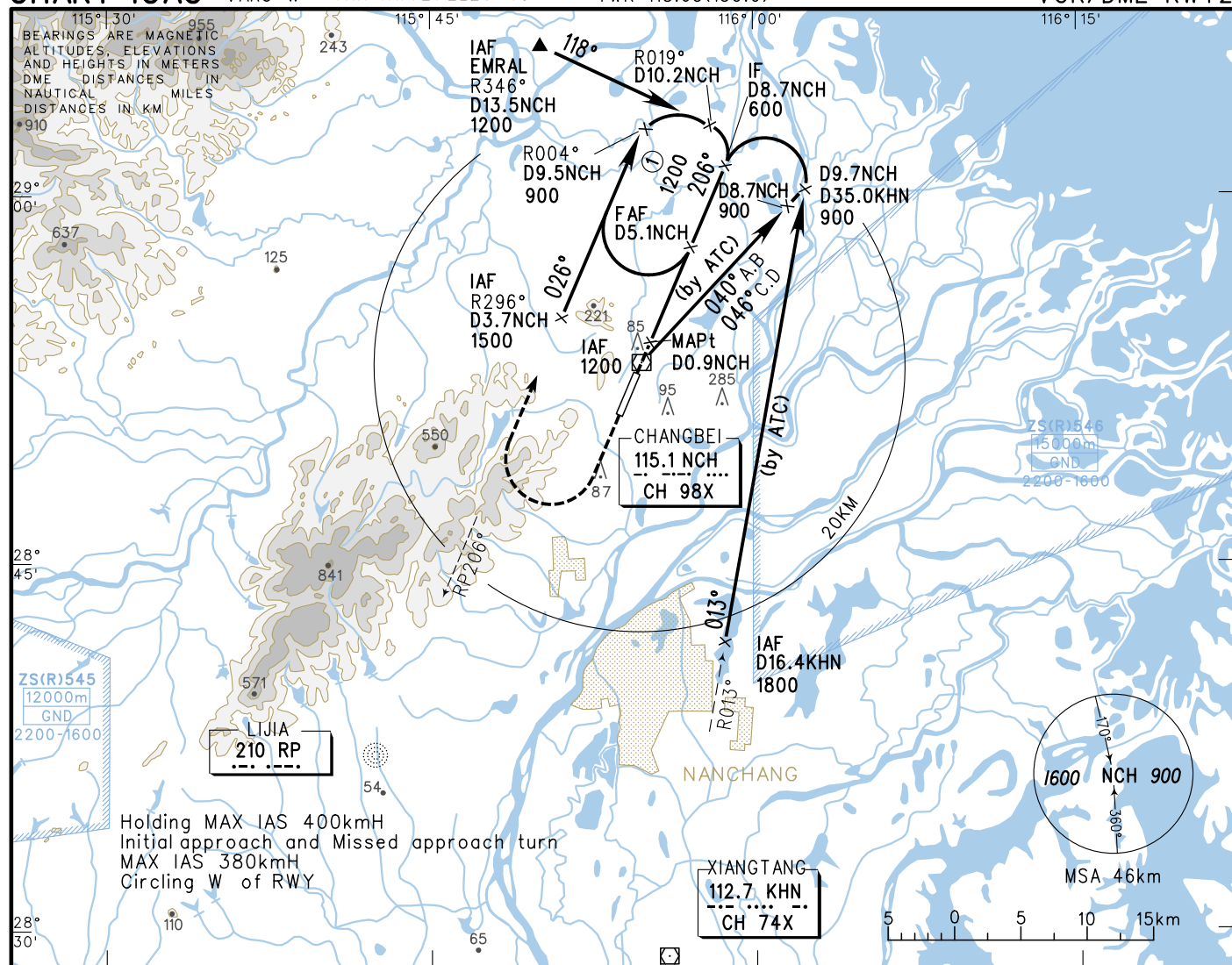
VAR3° W

AERODROME ELEV 44  
HEIGHTS RELATED TO  
THR RWY21 ELEV 40

ATIS 128.4  
APP 119.95(123.85)  
TWR 118.65(130.0)

ZSCN NANCHANG/Changbei

VOR/DME RWY21

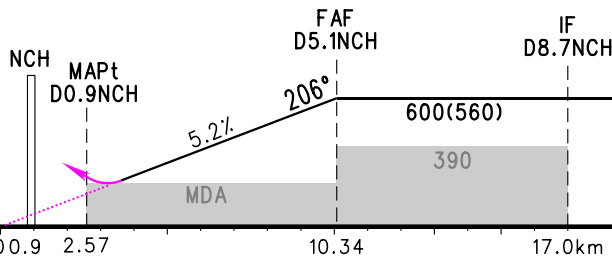


DME (NCH) (NM)	1	2	3	4	5	6	7	8
ALT (m)		295	391	487	583			

## MISSED APPROACH

Climb straight ahead to 750, turn  
RIGHT to 1500 intercept RP206°,  
then fly outbound from RP to  
approach again, join the holding  
pattern; or by ATC.

TL 3600  
TA 3000  
3300(QNH≥1031HPA)  
2700(QNH≤979HPA)



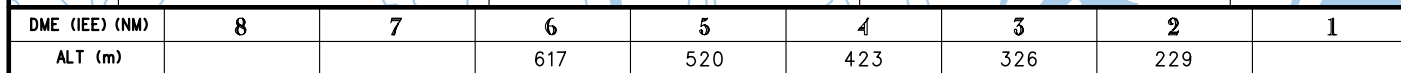
	A	B	C	D	FAF-MAPt 7.77km							
VOR/DME <sup>MDA(H)</sup> VIS	230(190) 3000		230(190) 3200	230(190) 3400	GS in	kt kmH	80 150	100 185	120 220	140 260	160 295	180 335
CIRCLING <sup>MDA(H)</sup> VIS	400(356) 3600	400(356) 4000	630(586) 4800	630(586) 5000	Time	min:sec	3:09	2:31	2:06	1:48	1:34	1:24
					Rate of descent m/s		2.2	2.7	3.2	3.8	4.3	4.8
					Changes: Conversion table, CDFA.							

Changes: Conversion table, CDF A.

## VAR3° W

ATIS 128.4  
APP 119.95(123.85)  
TWR 118.65(130.0)

NDB/DME RWY03

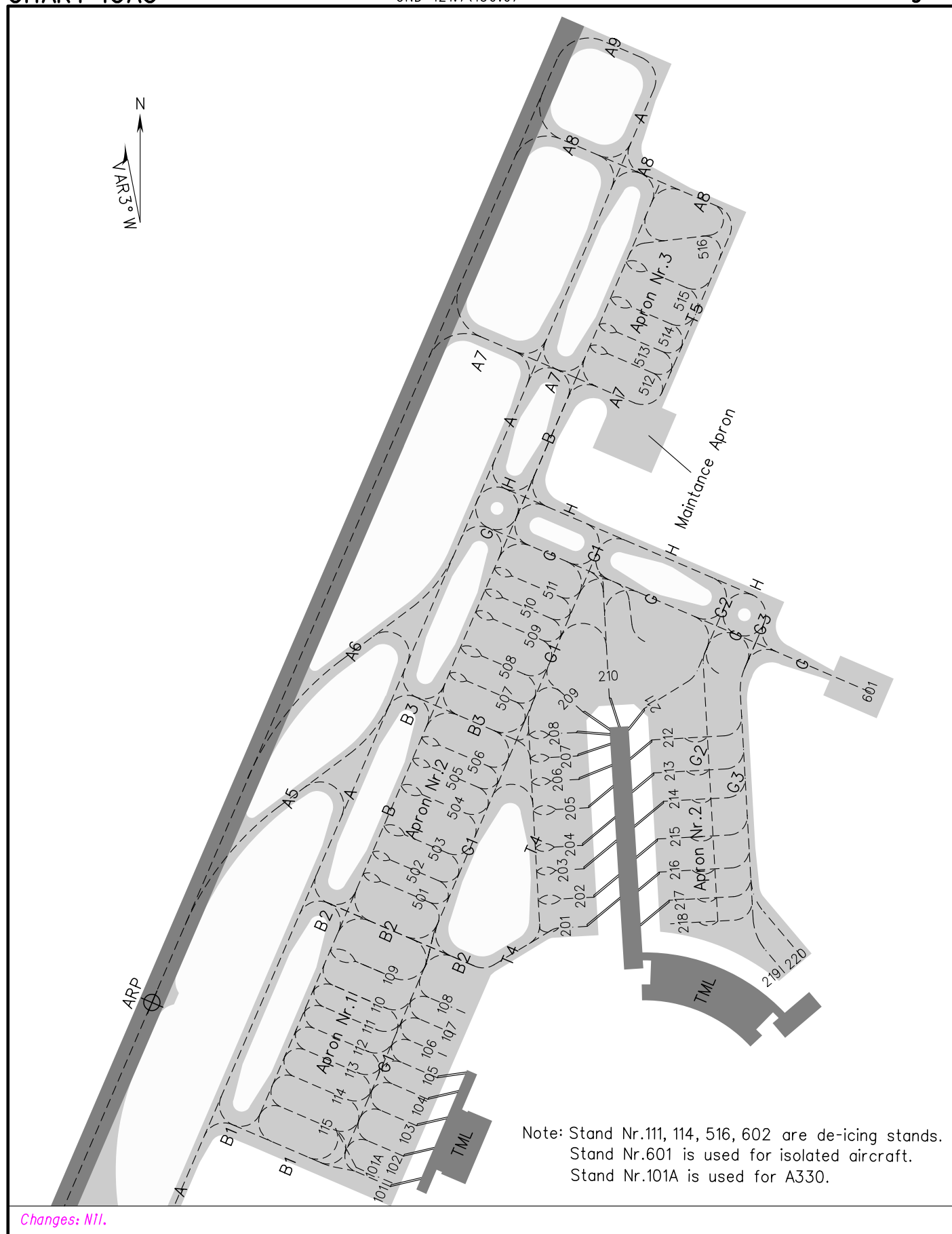


	A	B	C	D	FAF-MAPt 9.9km						
NDB/DME <sup>MDA(H)</sup> VIS	210(173) 2600		210(173) 2800	210(173) 3000	GS in kt kmH	80 150	100 185	120 220	140 260	160 295	180 335
CIRCLING <sup>MDA(H)</sup> VIS	400(356) 3600	400(356) 4000	630(586) 4800	630(586) 5000	Time min:sec	3:58	3:13	2:42	2:17	2:01	1:46
					Rate of descent m/s	2.2	2.7	3.2	3.8	4.3	4.8
					Changes: Procedure, conversion table, CDFA.						

# AIRCRAFT PARKING CHART-ICAO

ATIS 128.4  
TWR 118.65(130.0)  
GND 121.7(130.0)

ZSCN NANCHANG/Changbei



Changes: Nil.

# INSTRUMENT APPROACH CHART-ICAO

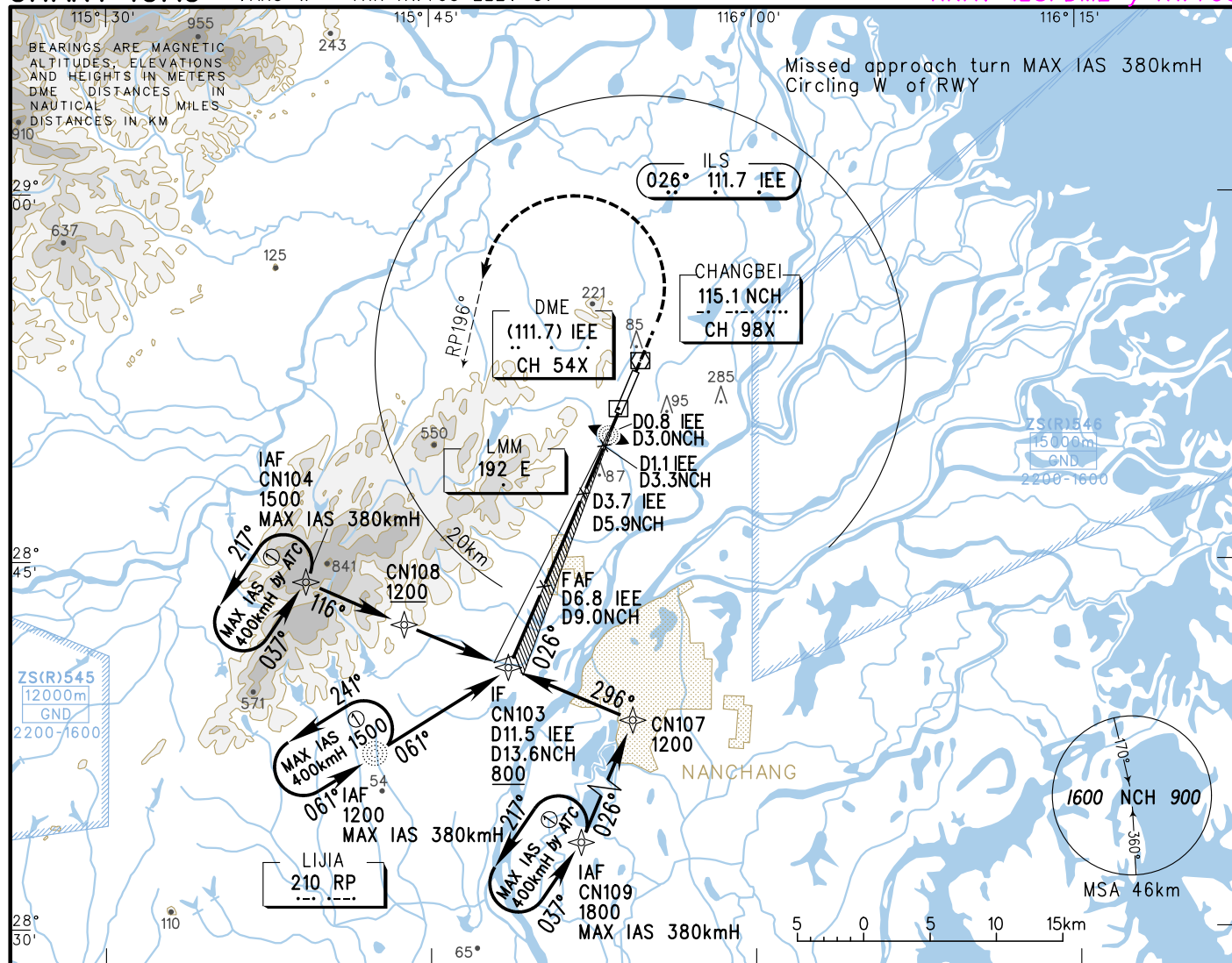
VAR3°W

AERODROME ELEV 44  
HEIGHTS RELATED TO  
THR RWY03 ELEV 37

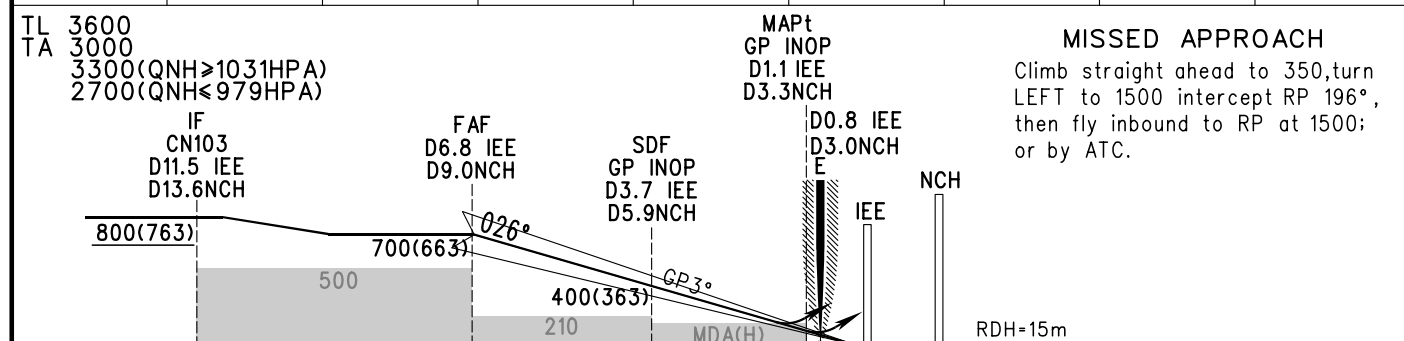
ATIS 128.4  
APP 119.95(123.85)  
TWR 118.65(130.0)

ZSCN NANCHANG/Changbei

RNAV ILS/DME y RWY03



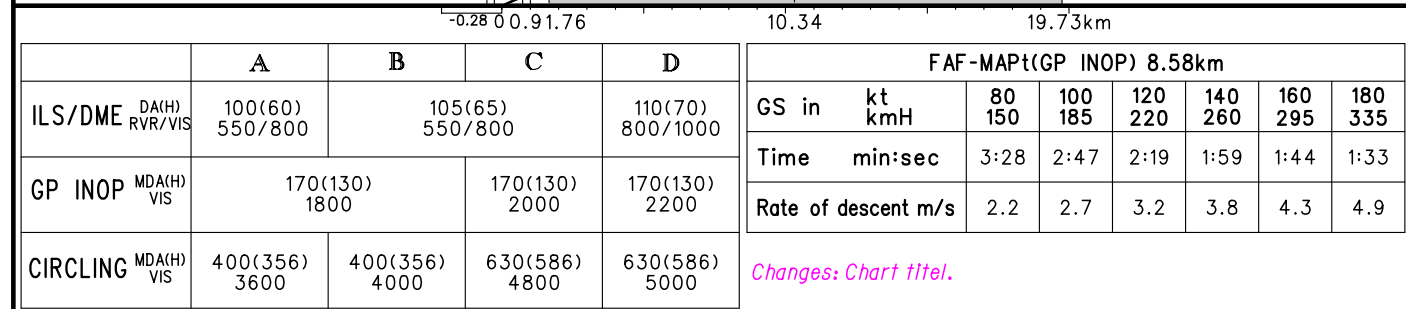
GP INOP	DME (IEE) (NM)	7	6	5	4	3	2	1
	ALT (m)		617	520	423	326	229	



20.95km					12.3		6.6		1.7		1.2		-0.31		-4.3	
	A		B		C		D		FAF-MAPt(GP INOP) 10.6km							
ILS/DME	DA(H) RVR/VIS		97(60) 550/800		102(65) 550/800		107(70) 800/1000		GS in	kt	80	100	120	140	160	180
									kmH		150	185	220	260	295	335
GP INOP	MDA(H) VIS		170(133) 1800		170(133) 2000		170(133) 2200		Time	min:sec	4:14	3:26	2:53	2:27	2:09	1:54
									Rate of descent	m/s	2.2	2.7	3.2	3.8	4.3	4.9
CIRCLING	MDA(H) VIS		400(356) 3600		400(356) 4000		630(586) 4800				Changes: Chart titel.					



ZSCN NANCHANG/Changbei  
RNAV ILS/DME y RWY21

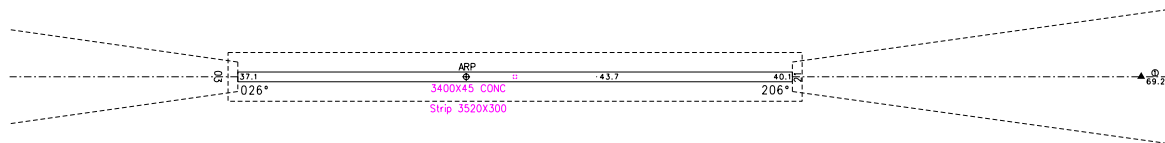
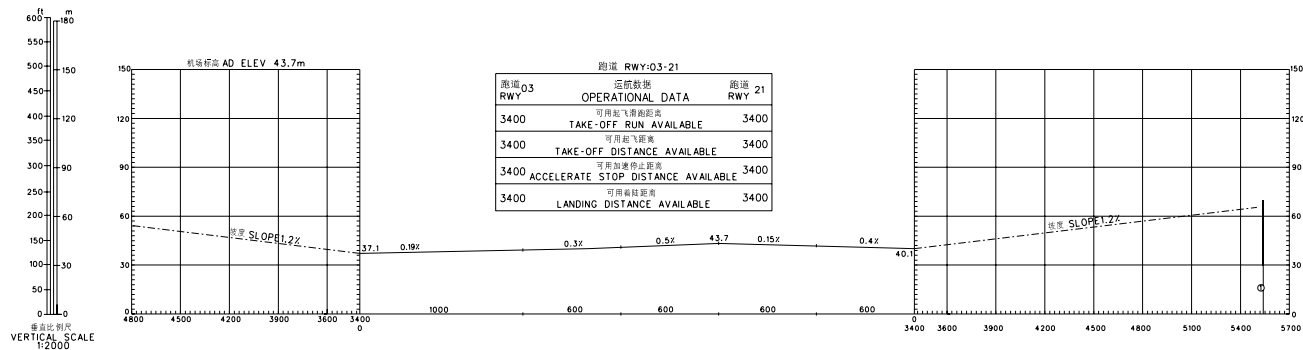


# 机场障碍物图-A型(运行限制) AERODROME OBSTRUCTION CHART-ICAO (TYPE A OPERATING LIMITATIONS)

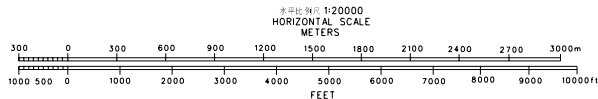
南昌/昌北 ZSCN NANCHANG/Changbei

尺度和标高为米,方位为磁方位 DIMENSIONS AND ELEVATIONS IN METERS BEARINGS ARE MAGNETIC

MAGNETIC VARIATION 磁差 3°W 西



图例 LEGEND	
①	障碍物编号 IDENTIFICATION NR
▲	MT



修正记录 AMENDMENT RECORD		
编号 Nr	日期 DATE	修正人 ENTERED BY

Changes: RWY length, OBST.



# STANDARD DEPARTURE CHART-INSTRUMENT

VAR3° W

ATIS 128.4  
APP 119.95(123.85)  
TWR 118.65(130.0)

ZSCN NANCHANG/Changbei  
RWY21

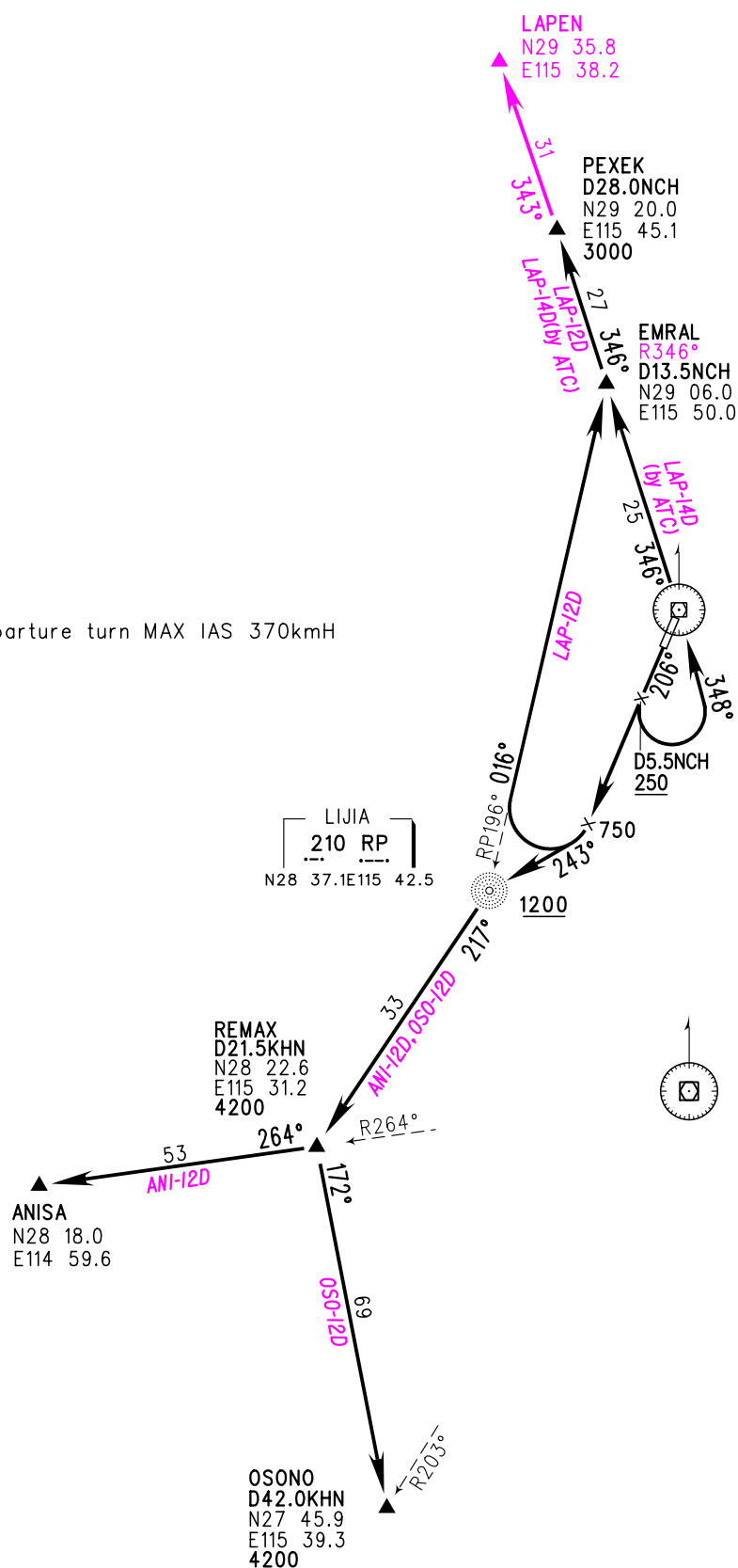
BEARINGS ARE MAGNETIC  
ALTITUDES, ELEVATIONS  
AND HEIGHTS IN METERS  
DME DISTANCES IN  
NAUTICAL MILES  
DISTANCES IN KM



NOT TO SCALE

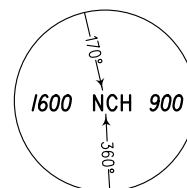
TL 3600  
TA 3000  
3300(QNH≥1031HPA)  
2700(QNH≤979HPA)

Departure turn MAX IAS 370kmH



CHANGBEI  
115.1 NCH  
CH 98X  
N28 53.1E115 54.7

XIANGTANG  
112.7 KHN  
CH 74X  
N28 25.8E115 55.4



MSA 46km

Changes: Procedure.



# STANDARD DEPARTURE CHART-INSTRUMENT

VAR3° W

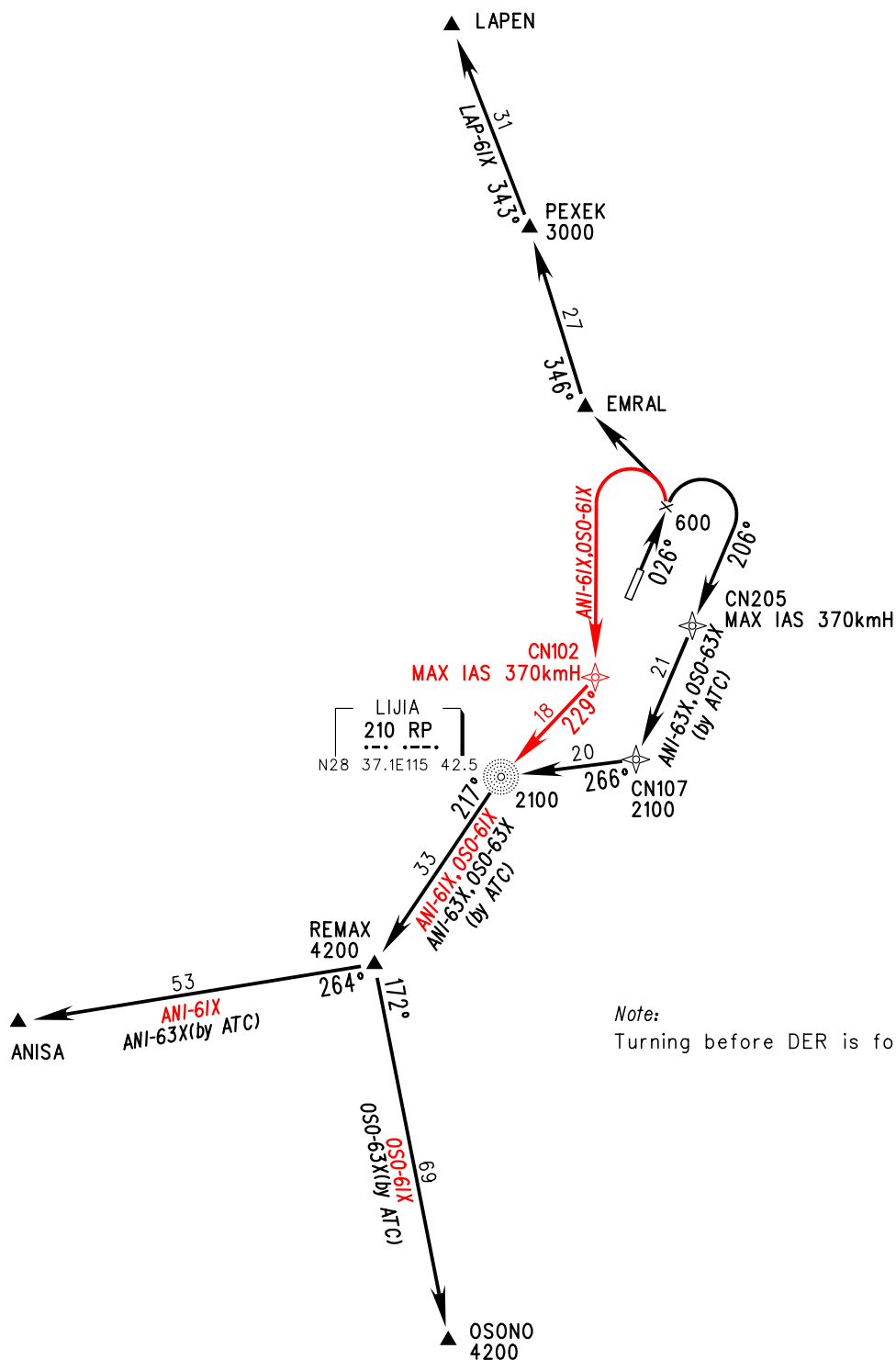
ATIS 128.4  
APP 119.95(123.85)  
TWR 118.65(130.0)

ZSCN NANCHANG/Changbei  
RNAV RWY03

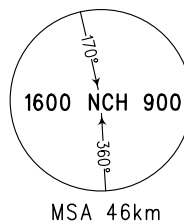
BEARINGS ARE MAGNETIC  
ALTITUDES, ELEVATIONS  
AND HEIGHTS IN METERS  
DME DISTANCES IN  
NAUTICAL MILES  
DISTANCES IN KM

TL 3600  
TA 3000  
3300(QNH≥1031hPa)  
2700(QNH≤979hPa)

1. Basic RNP1
2. GNSS REQUIRED



Note:  
Turning before DER is forbidden.



Changes: Procedures.

# STANDARD DEPARTURE CHART-INSTRUMENT

VAR3° W

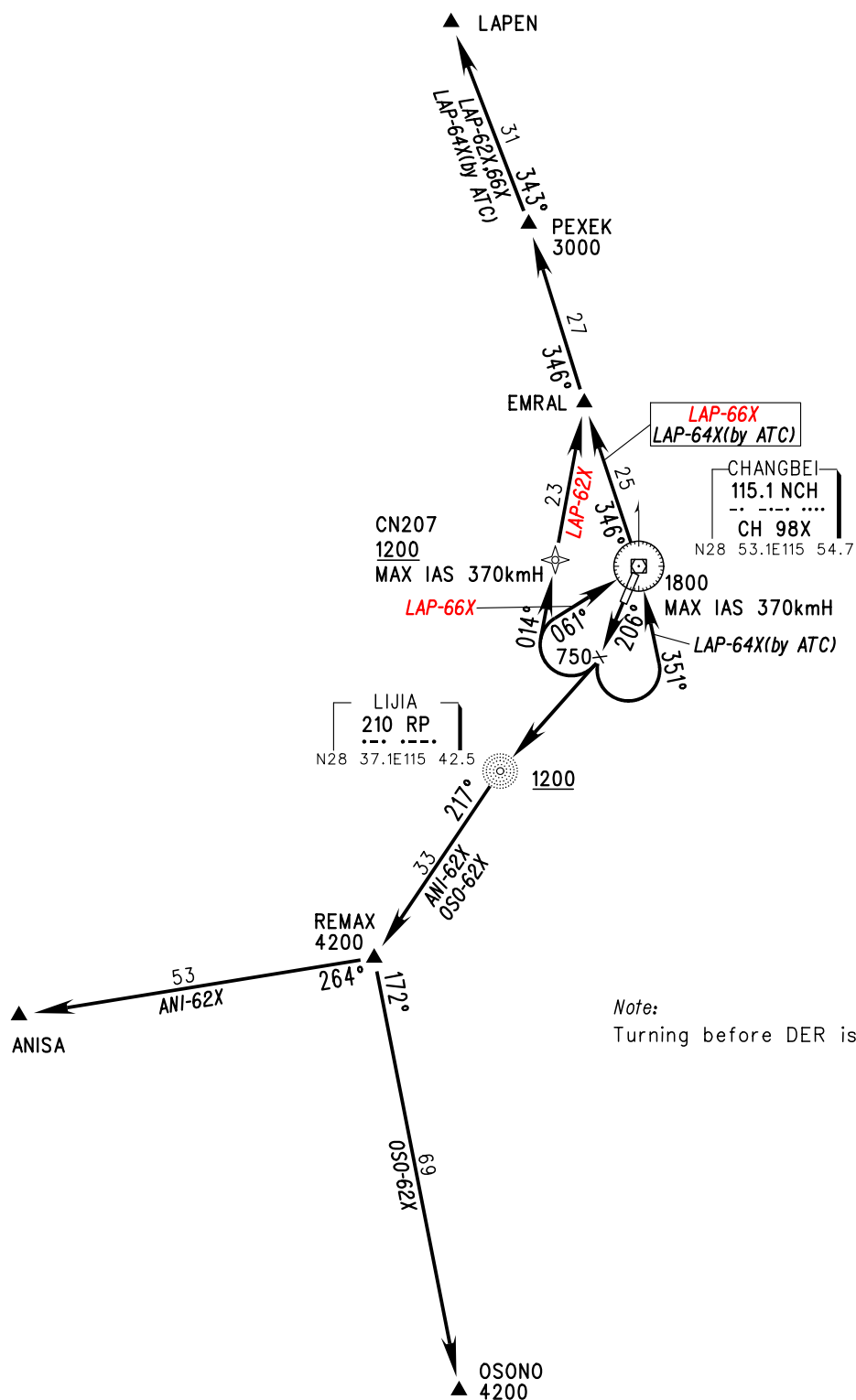
ATIS 128.4  
APP 119.95(123.85)  
TWR 118.65(130.0)

ZSCN NANCHANG/Changbei  
RNAV RWY21

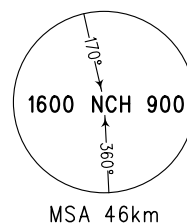
BEARINGS ARE MAGNETIC  
ALTITUDES, ELEVATIONS  
AND HEIGHTS IN METERS  
DME DISTANCES IN  
NAUTICAL MILES  
DISTANCES IN KM

TL 3600  
TA 3000  
3300(QNH≥1031hPa)  
2700(QNH≤979hPa)

1. Basic RNP1
2. GNSS REQUIRED



Changes: Procedures.



MSA 46km

# STANDARD ARRIVAL CHART-INSTRUMENT

ATIS 128.4  
APP 119.95(123.85)  
VAR 3° W  
TWR 118.65(130.0)

ZSCN NANCHANG/Changbei  
RWY03

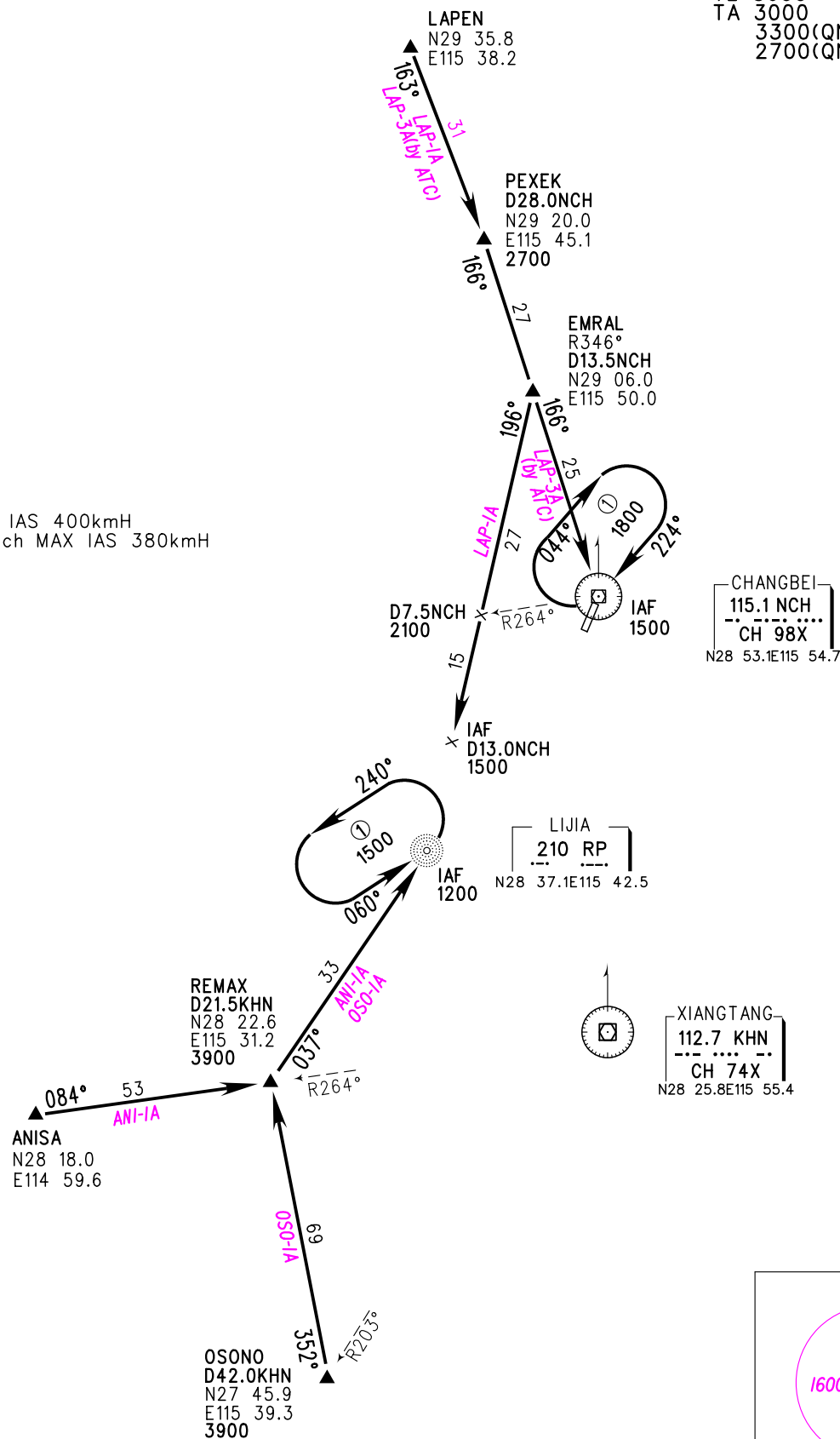
BEARINGS ARE MAGNETIC  
ALTITUDES, ELEVATIONS  
AND HEIGHTS IN METERS  
DME DISTANCES IN  
NAUTICAL MILES  
DISTANCES IN KM

TL 3600  
TA 3000  
3300(QNH≥1031HPA)  
2700(QNH≤979HPA)



NOT TO SCALE

Holding MAX IAS 400kmH  
Initial approach MAX IAS 380kmH



Changes: Procedure, MSA.

# STANDARD ARRIVAL CHART-INSTRUMENT

ATIS 128.4  
APP 119.95(123.85)  
VAR 3° W  
TWR 118.65(130.0)

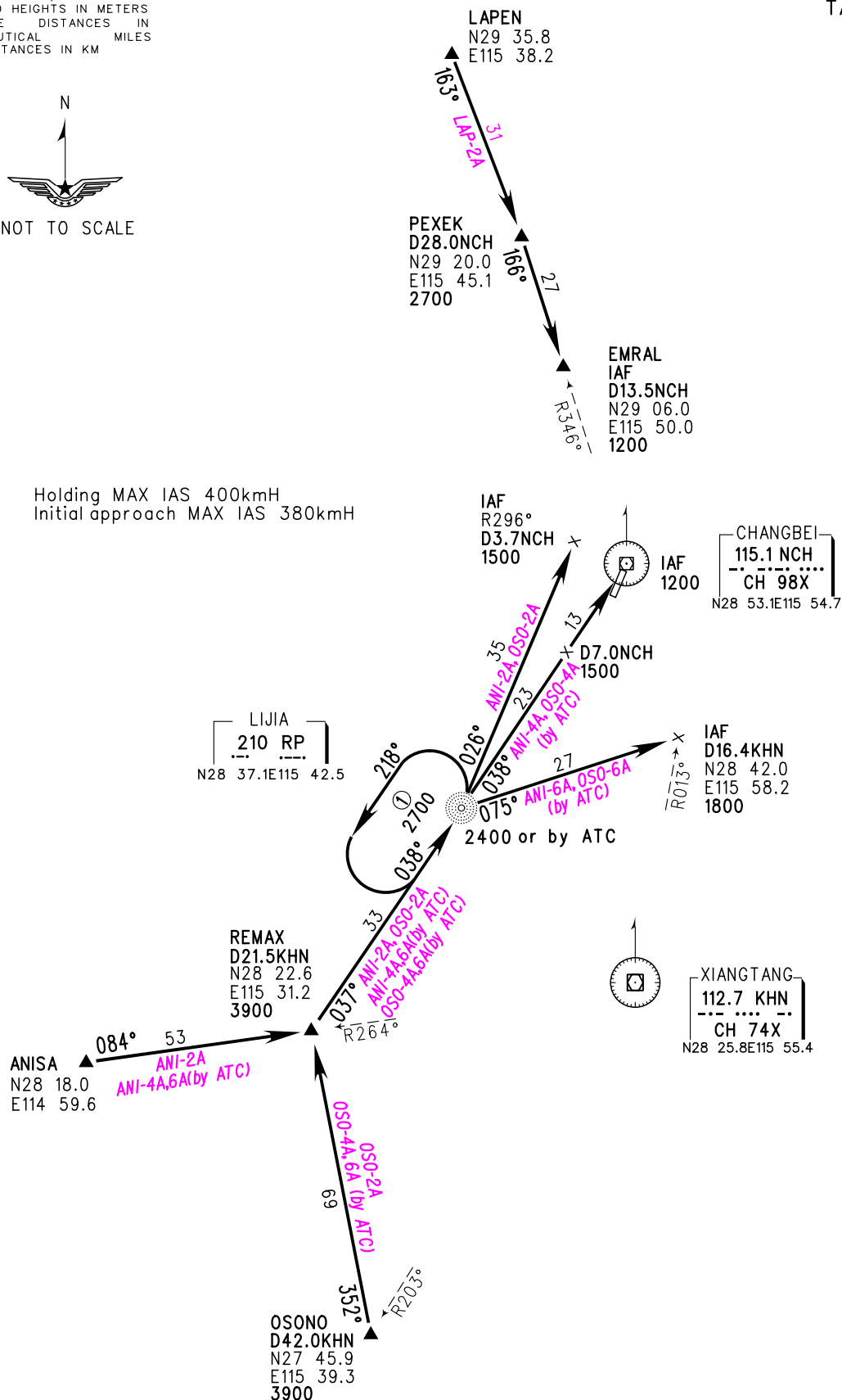
ZSCN NANCHANG/Changbei  
RWY 21

BEARINGS ARE MAGNETIC  
ALTITUDES, ELEVATIONS  
AND HEIGHTS IN METERS  
DME DISTANCES IN  
NAUTICAL MILES  
DISTANCES IN KM

TL 3600  
TA 3000  
3300(QNH≥1031HPA)  
2700(QNH≤979HPA)



Holding MAX IAS 400kmH  
Initial approach MAX IAS 380kmH



Changes: Procedure.





# STANDARD ARRIVAL CHART-INSTRUMENT

VAR3° W

ATIS 128.4  
APP 119.95(123.85)  
TWR 118.65(130.0)

ZSCN NANCHANG/Changbei  
RNAV RWY21

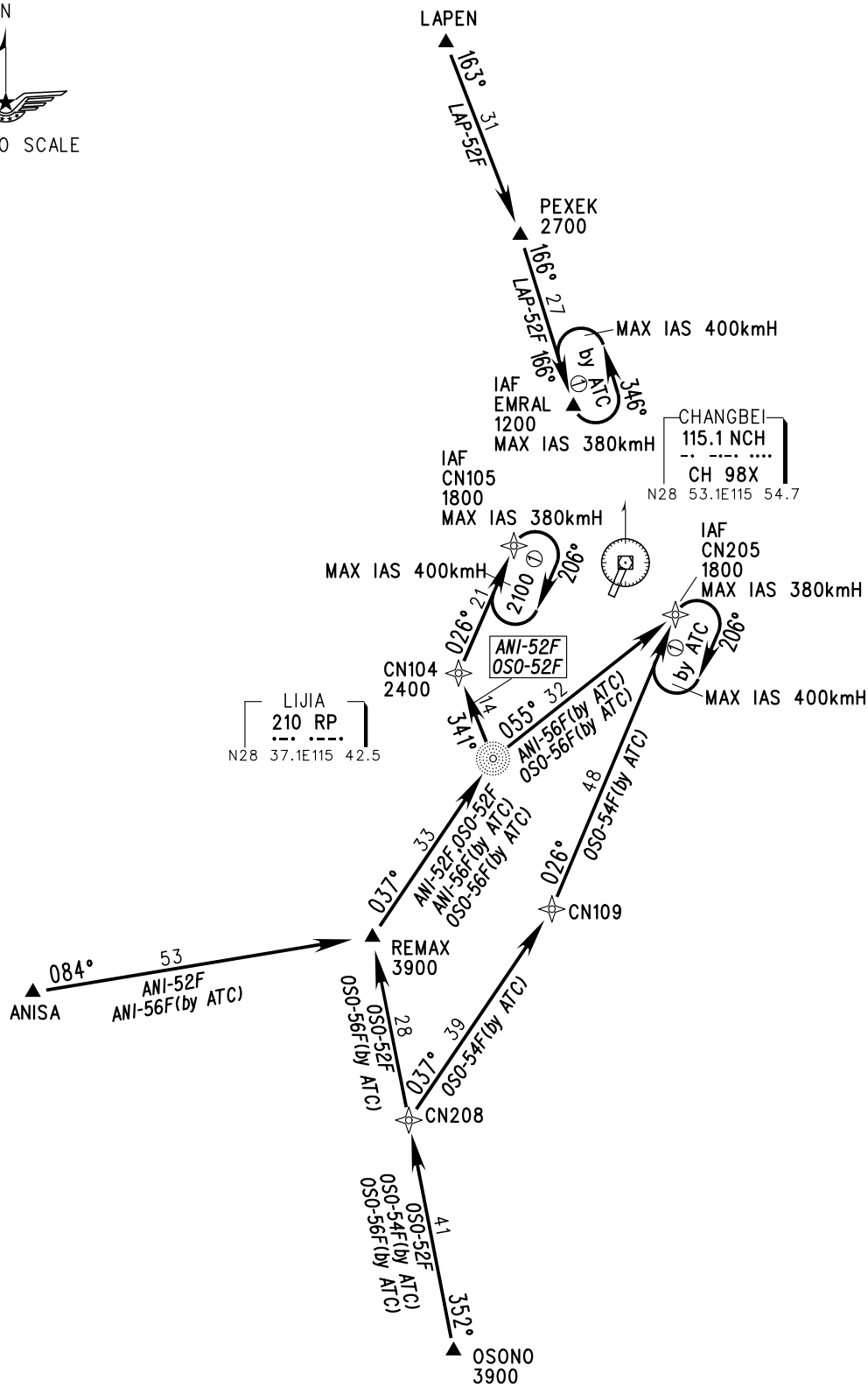
BEARINGS ARE MAGNETIC  
ALTITUDES, ELEVATIONS  
AND HEIGHTS IN METERS  
DME DISTANCES IN  
NAUTICAL MILES  
DISTANCES IN KM

TL 3600  
TA 3000  
3300(QNH≥1031HPA)  
2700(QNH≤979HPA)

1. Basic RNP1
2. GNSS REQUIRED



NOT TO SCALE



Changes: New chart.