

List of pages in this Trip Kit

Trip Kit Index

Airport Information For ZUCK

Terminal Charts For ZUCK

Revision Letter For Cycle 19-2016

Change Notices

Notebook

General Information

Location: CHONGQING CHN
ICAO/IATA: ZUCK / CKG
Lat/Long: N29°43.2', E106°38.4'
Elevation: 1365 ft

Airport Use: Public
Daylight Savings: Not Observed
UTC Conversion: -8:00 = UTC
Magnetic Variation: 2.0°W

Fuel Types: Jet A-1
Repair Types: Minor Airframe
Customs: Yes
Airport Type: IFR
Landing Fee: Yes
Control Tower: Yes
Jet Start Unit: No
LLWS Alert: No
Beacon: No

Sunrise: 2340 Z
Sunset: 0956 Z

Runway Information

Runway: 02L
Length x Width: 10499 ft x 148 ft
Surface Type: concrete
TDZ-Elev: 1351 ft
Lighting: Edge, ALS, Centerline

Runway: 02R
Length x Width: 11811 ft x 148 ft
Surface Type: concrete
TDZ-Elev: 1354 ft
Lighting: Edge, ALS, Centerline
Displaced Threshold: 656 ft

Runway: 20L
Length x Width: 11811 ft x 148 ft
Surface Type: concrete

TDZ-Elev: 1353 ft

Lighting: Edge, ALS, Centerline

Displaced Threshold: 656 ft

Runway: 20R

Length x Width: 10499 ft x 148 ft

Surface Type: concrete

TDZ-Elev: 1349 ft

Lighting: Edge, ALS, Centerline

Communication Information

ATIS: 126.400 Arrival Service

ATIS: 126.650 Departure Service

Chongqing Tower: 124.350

Chongqing Tower: 118.200

Chongqing Tower: 118.650 Secondary

Chongqing Delivery Ground: 121.950

Chongqing Ground: 121.750

Chongqing Approach: 119.100

Chongqing Approach: 119.550 Secondary

Chongqing Approach: 120.850

Chongqing Approach: 124.200 Secondary

Chongqing Approach: 125.200

ZUCK/CKG
JIANGBEI

18 MAR 16

JEPPESEN

10-1P

Eff 30 Mar 1600Z

CHONGQING, PR OF CHINA

AIRPORT BRIEFING

1. GENERAL

1.1. ATIS

D-ATIS Arrival 126.4

D-ATIS Departure 126.65

1.2. NOISE ABATEMENT PROCEDURES

1.2.1. RUN-UP TESTS

Engine run-ups are subject to ATC.

1.3. RWY OPERATIONS

Segregated parallel approaches/departures are implemented; RWY 02L/20R is mainly used for departure, RWY 02R/20L is mainly used for arrival.

During changing the direction of RWY in use, if downwind speed is more than 3m/s (6 KT) and not exceeding 5m/s (10 KT), ATC shall inform ACFT of the ground wind direction and speed, and instruct downwind take-off or downwind landing for short time. If pilot decides not to take off or land on downwind RWY, inform ATC immediately and wait for further instructions.

1.4. TAXI PROCEDURES

180° turns on TWYs are strictly forbidden.

TWYs used for crossing RWY02L/20R are:

B1, B4, B5, B7, A6, A9, A11.

ACFT are forbidden to enter/exit RWY 02L/20R via TWYs B4, B5, B7 or A9.

When RWY02L/20R is used for arrivals, ACFT operation is strictly forbidden between TWY B1 and B5 and between A11 and E7 without ATC permission.

ACFT taxiing on TWY B are forbidden to pass behind ACFT on TWYs B2 and A10.

ACFT taxiing on TWY C are forbidden to pass behind ACFT on TWYs E1 and E9.

ACFT taxiing on apron shall be guided by follow-me vehicles, except parking on stands 103, 104, 107, 206 thru 209, 216 thru 218, 225 thru 227, 405, 406, 415, 416, 425, 426, 435, 436, 442, 455 and 456.

TWYs A9, A10 and A11 (West of TWY B) MAX wingspan 213'/65m.

TWYs A7 and A8 MAX wingspan 119'/36.3m when stand 443 is in use.

TWYs A6 and A7 MAX wingspan 118'/36m when stand 445 is in use.

1.5. PARKING INFORMATION

Visual Docking Guidance System available at stands 201 thru 212.

1.6. OTHER INFORMATION

RWY 02L/R right-hand circuit.

Birds.

ZUCK/CKG
JIANGBEI

18 MAR 16

JEPPESEN

10-1P1

Eff 30 Mar 1600Z

CHONGQING, PR OF CHINA

AIRPORT BRIEFING

2. ARRIVAL

2.1. SPEED RESTRICTIONS

IAS limitations for arrival unless otherwise directed by ATC:

- 250 KT before approach to 'DS'/BONBO/'QJG';
- MIM 180 KT before approach to IF;
- 160 KT between IF and FAF.
- Inform ATC on initial contact with APP if ACFT cannot fulfill the IAS limitations above.
- Visual separation and visual approach are not suitable for the IAS limitations above.

2.2. RWY OPERATIONS

Except informed by controller which rapid exit TWY is to be used, landing ACFT shall vacate RWY using the nearest rapid exit TWY and report the used TWY and position to the Tower Controller immediately after vacating RWY. If the ACFT cannot use the rapid exit TWY, pilot shall inform the controller as early as possible.

2.3. TAXI PROCEDURES

- **Requirements to increase RWY operation capacity:**
ACFT shall fully vacate RWY within 50 sec after touchdown.
ACFT shall fully cross RWY within 42 sec after getting ATC clearance.
If pilots cannot comply with these requirements, ATC has to be informed in advance.

3. DEPARTURE

3.1. START-UP, PUSH-BACK & TAXI PROCEDURES

Departure Clearance (DCL) via data link is preferred and pilot shall repeat RWY designator in use and initial climb information to controller after successful DCL service.

Listen to ATIS frequency before applying for verbal Delivery Clearance. Report the ATIS code to the controller when requesting Delivery Clearance. Repeat the information after obtaining Delivery Clearance.

Contact Ground Control for Push-back and Start-up Clearance after towing tractor is ready and preparation according to the DCL or Delivery Clearance is completed, and conduct within 5 minutes, otherwise, request for the clearance once more.

- **Requirements to increase RWY operation capacity:**
ACFT shall finish RWY alignment within 60 sec after leaving the holding position.
ACFT shall fully cross RWY within 42 sec after getting ATC clearance.
If pilots cannot comply with these requirements, ATC has to be informed in advance.

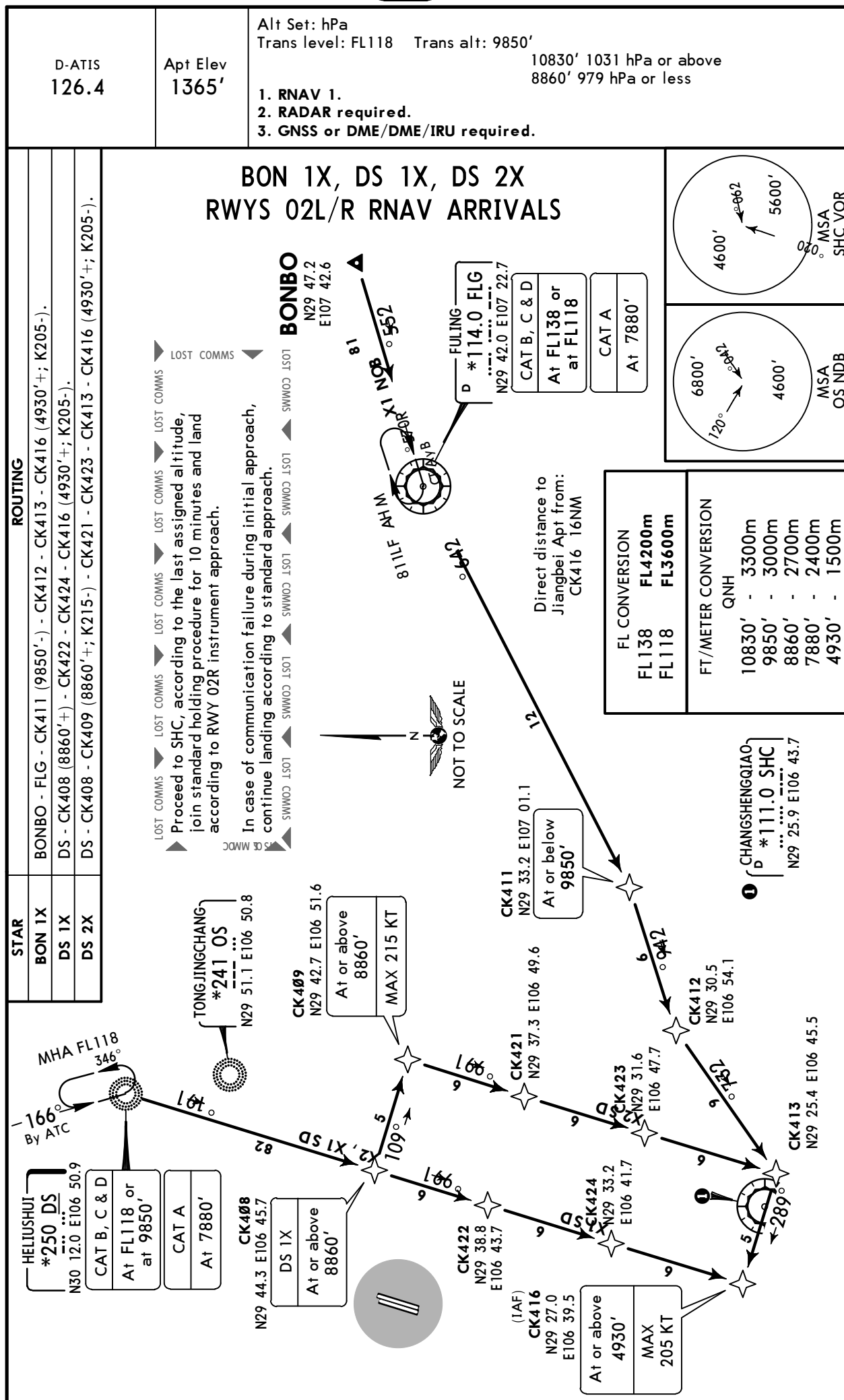
ZUCK/CKG
JIANGBEI

18 MAR 16

10-2

JEPPesen CHONGQING, PR OF CHINA

RNAV STAR



CHANGES: Lost comms revised.

© JEPPesen, 2013, 2016. ALL RIGHTS RESERVED.

ZUCK/CKG
JIANGBEI

18 MAR 16

10-2A



JEPPESSEN

CHONGQING, PR OF CHINA

RNAV STAR

D-ATIS
126.4

Apt Elev
1365'

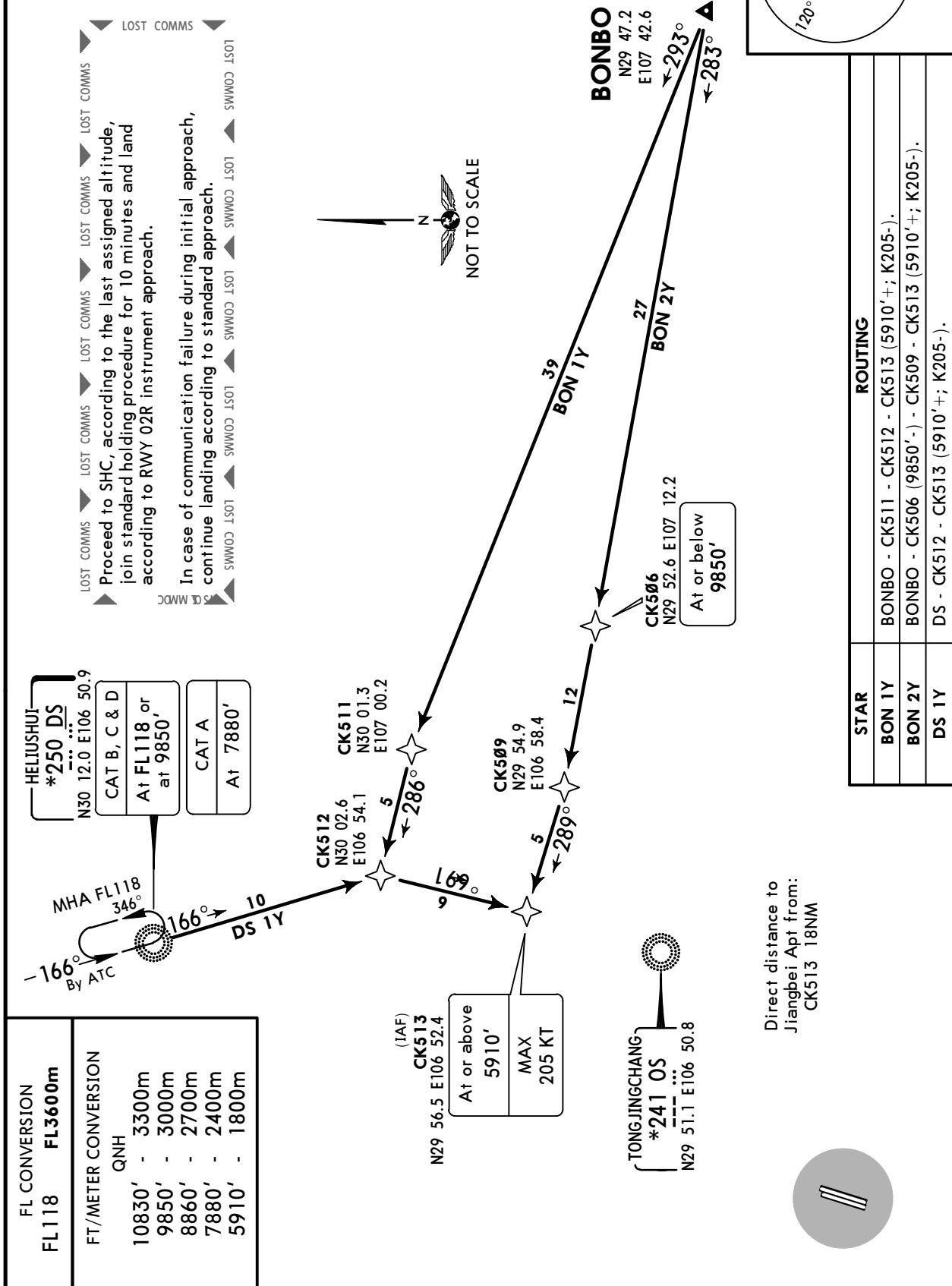
Alt Set: hPa

Trans level: FL118 Trans alt: 9850'

10830' 1031 hPa or above
8860' 979 hPa or less

1. RNAV 1.
2. RADAR required.
3. GNSS or DME/DME/IRU required.

BON 1Y, BON 2Y, DS 1Y RWYS 20L/R RNAV ARRIVALS



CHANGES: Lost Comms revised.

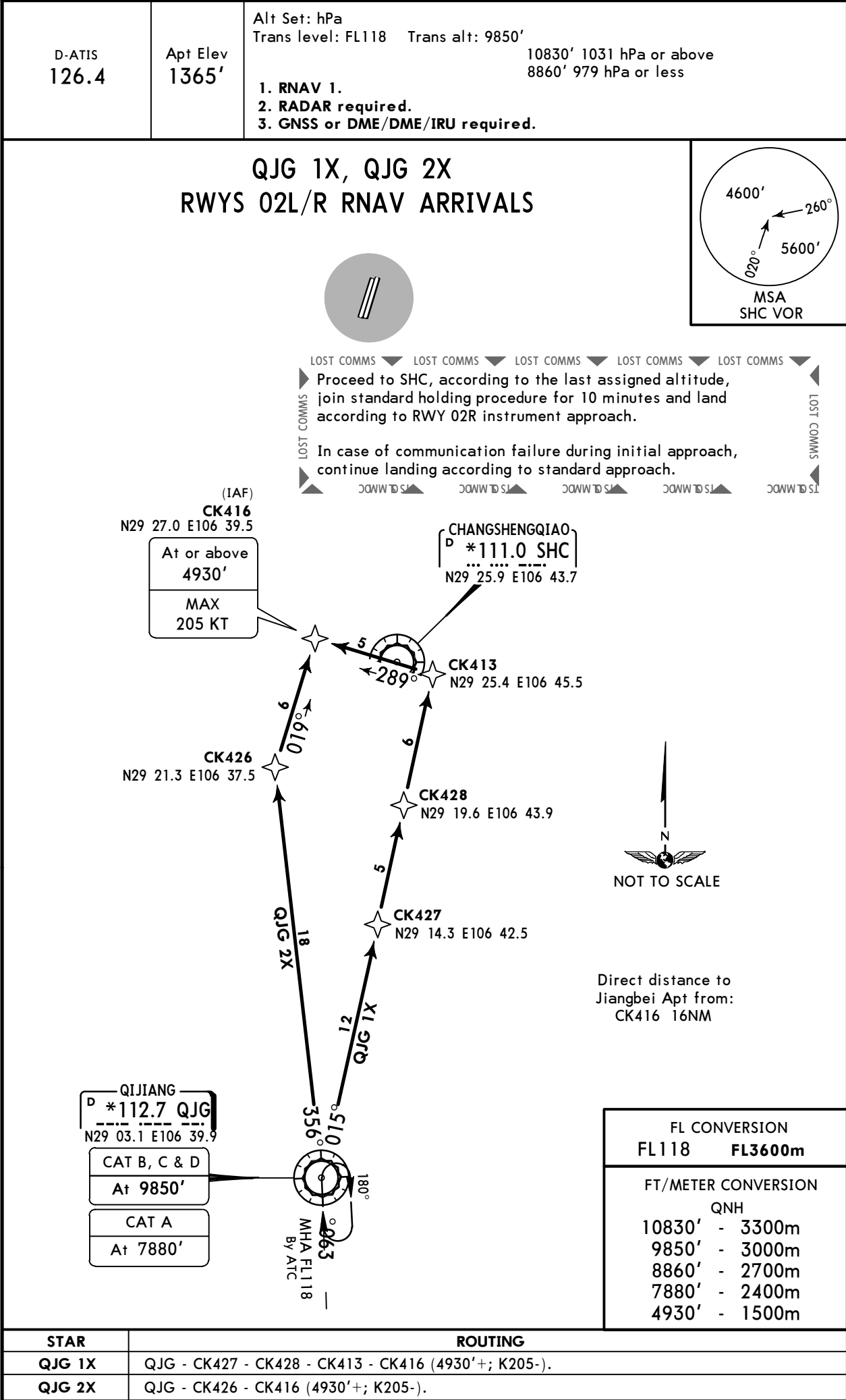
© JEPPESSEN, 2013, 2016. ALL RIGHTS RESERVED.

ZUCK/CKG
JIANGBEI

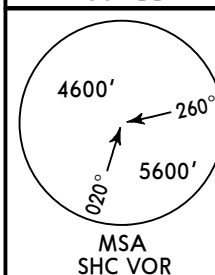
18 MAR 16 10-2B

CHONGQING, PR OF CHINA

RNAV STAR



1. RNAV 1.
2. RADAR required.
3. GNSS or DME/DME/IRU required.



▶ **LOST COMMS** ▶ **LOST COMMS** ▶ **LOST COMMS** ▶ **LOST COMMS** ▶

▶ **LOST COMMS** ▶ Proceed to SHC, according to the last assigned altitude, join standard holding procedure for 10 minutes and land according to RWY 02R instrument approach.

▶ **LOST COMMS** ▶ In case of communication failure during initial approach, continue landing according to standard approach.

▶ **LOST COMMS** ▶

FL CONVERSION	
FL118	FL3600m
FT/METER CONVERSION	
QNH	
10830'	- 3300m
9850'	- 3000m
8860'	- 2700m
7880'	- 2400m
5910'	- 1800m

STAR	ROUTING
QJG 1Y	QJG - SHC - CK518 - CK507 (8860'+) - CK517 - OS - CK513 (5910'+; K205-).
QJG 2Y	QJG - SHC - CK518 - CK508 (8860'+) - CK514 - CK516 - CK509 - CK513 (5910'+; K205-).

ZUCK/CKG
JIANGBEI

JEPPESEN
18 MAR 16 (10-2D)

CHONGQING, PR OF CHINA

STAR

D-ATIS
126.4

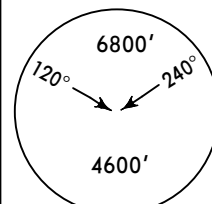
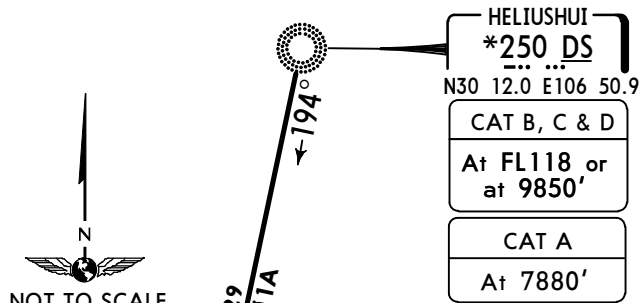
Apt Elev
1365'

Alt Set: hPa
Trans level: FL118 Trans alt: 9850'

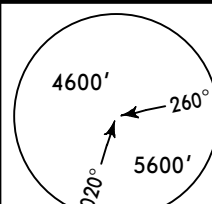
10830' 1031 hPa or above
8860' 979 hPa or less

**BONBO Ø1A [BONØ1A]
DS Ø1A, QJG Ø1A
RWYS 02L/R ARRIVALS**

SPEED: INITIAL APPROACH MAX 205 KT



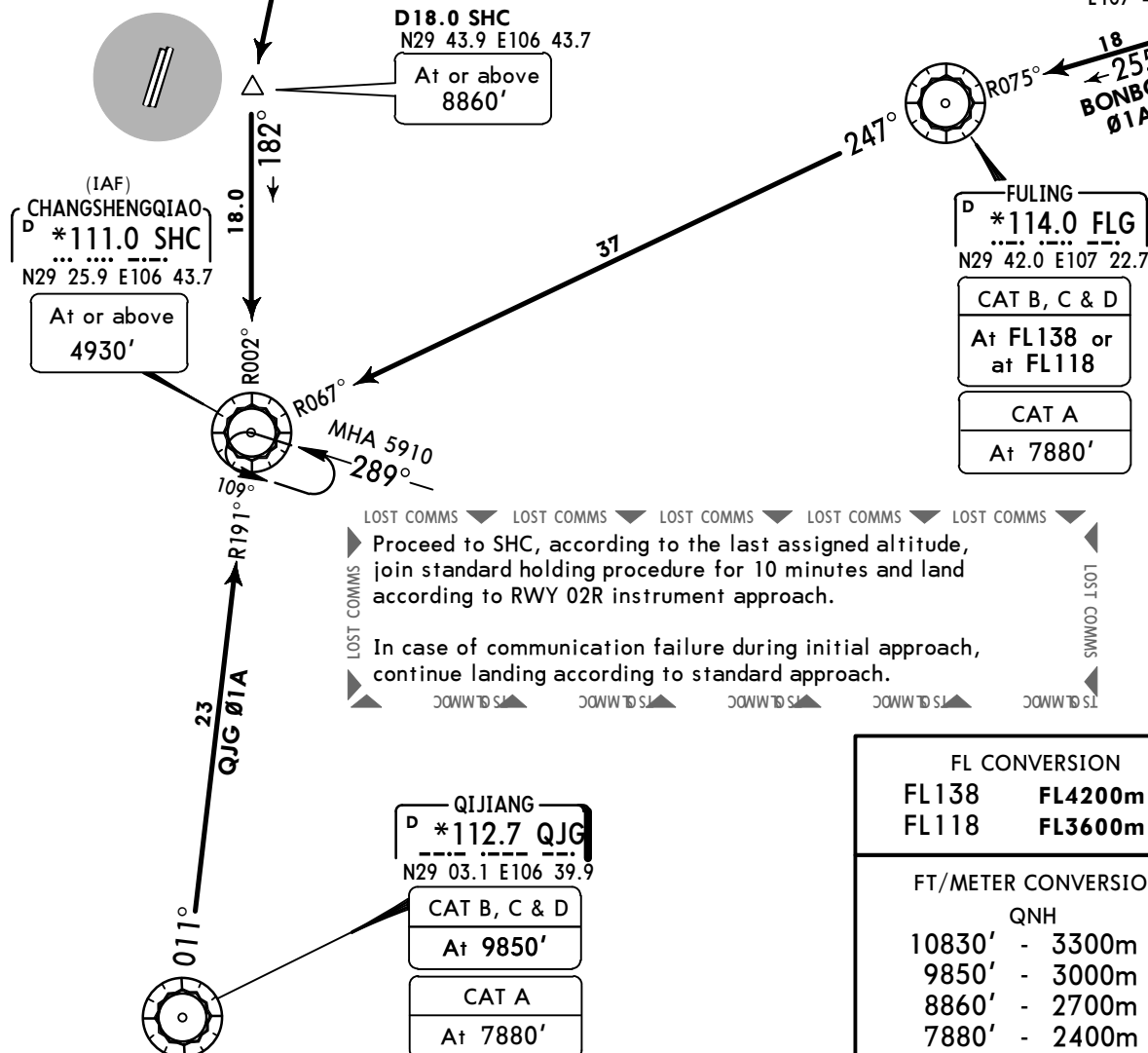
MSA
OS NDB



MSA
SHC VOR

Direct distance to
Jiangbei Apt from:
SHC 18NM

BONBO
N29 47.2
E107 42.6



LOST COMMS ▼ LOST COMMS ▼ LOST COMMS ▼ LOST COMMS ▼ LOST COMMS

► Proceed to SHC, according to the last assigned altitude, join standard holding procedure for 10 minutes and land according to RWY 02R instrument approach.

1507 In case of communication failure during initial approach,
 1508 continue landing according to standard approach.

FL CONVERSION

FL138	FL4200m
FL118	FL3600m

FT/METER CONVERSION

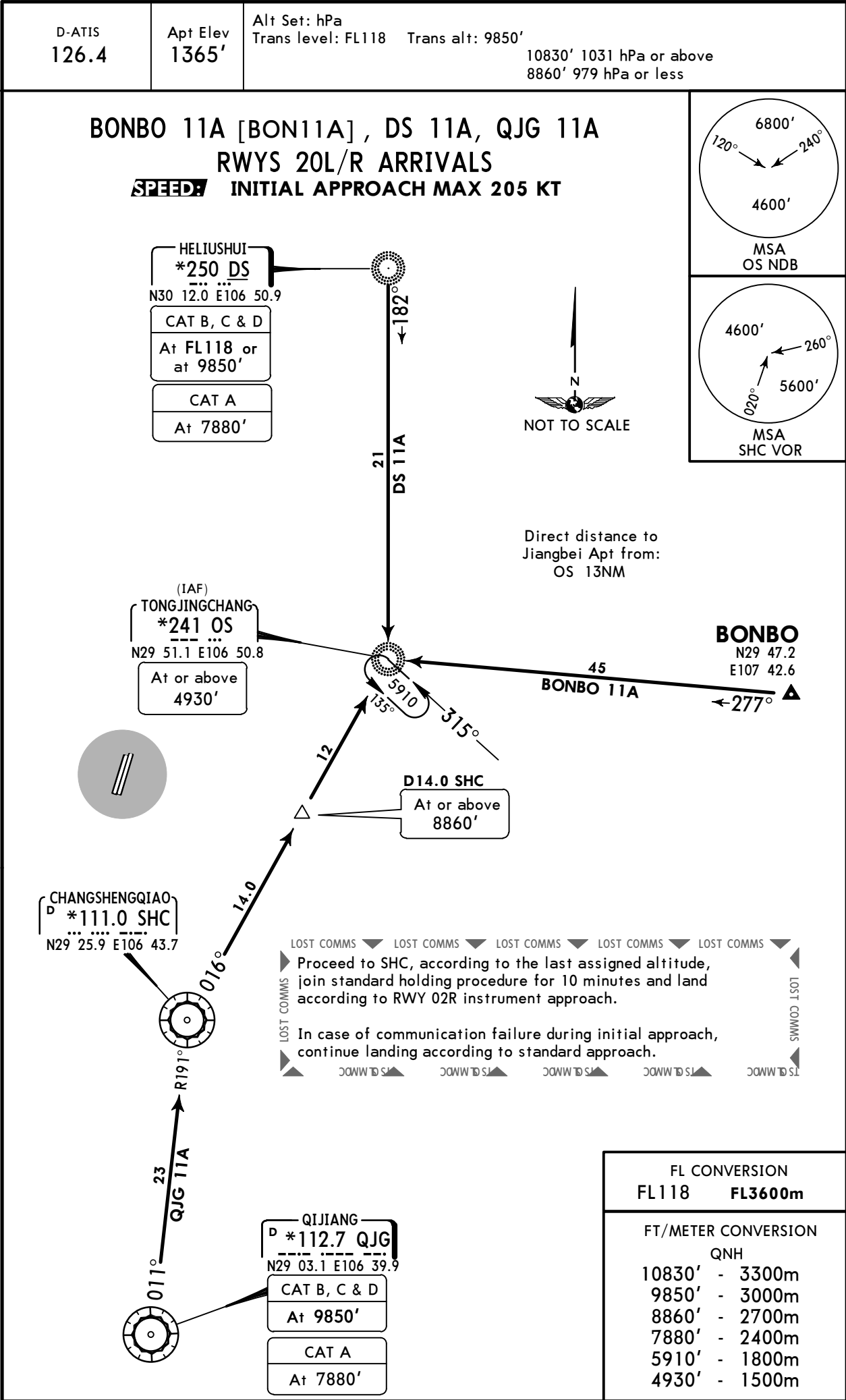
QNH

10830'	-	3300m
9850'	-	3000m
8860'	-	2700m
7880'	-	2400m
5910'	-	1800m
4930'	-	1500m

ZUCK/CKG
JIANGBEI

JEPPESSEN CHONGQING, PR OF CHINA
18 MAR 16 10-2E

STAR



ZUCK/CKG
JIANGBEI

JEPPESSEN CHONGQING, PR OF CHINA
16 MAY 14 (10-3) Eff 29 May RNAV SID

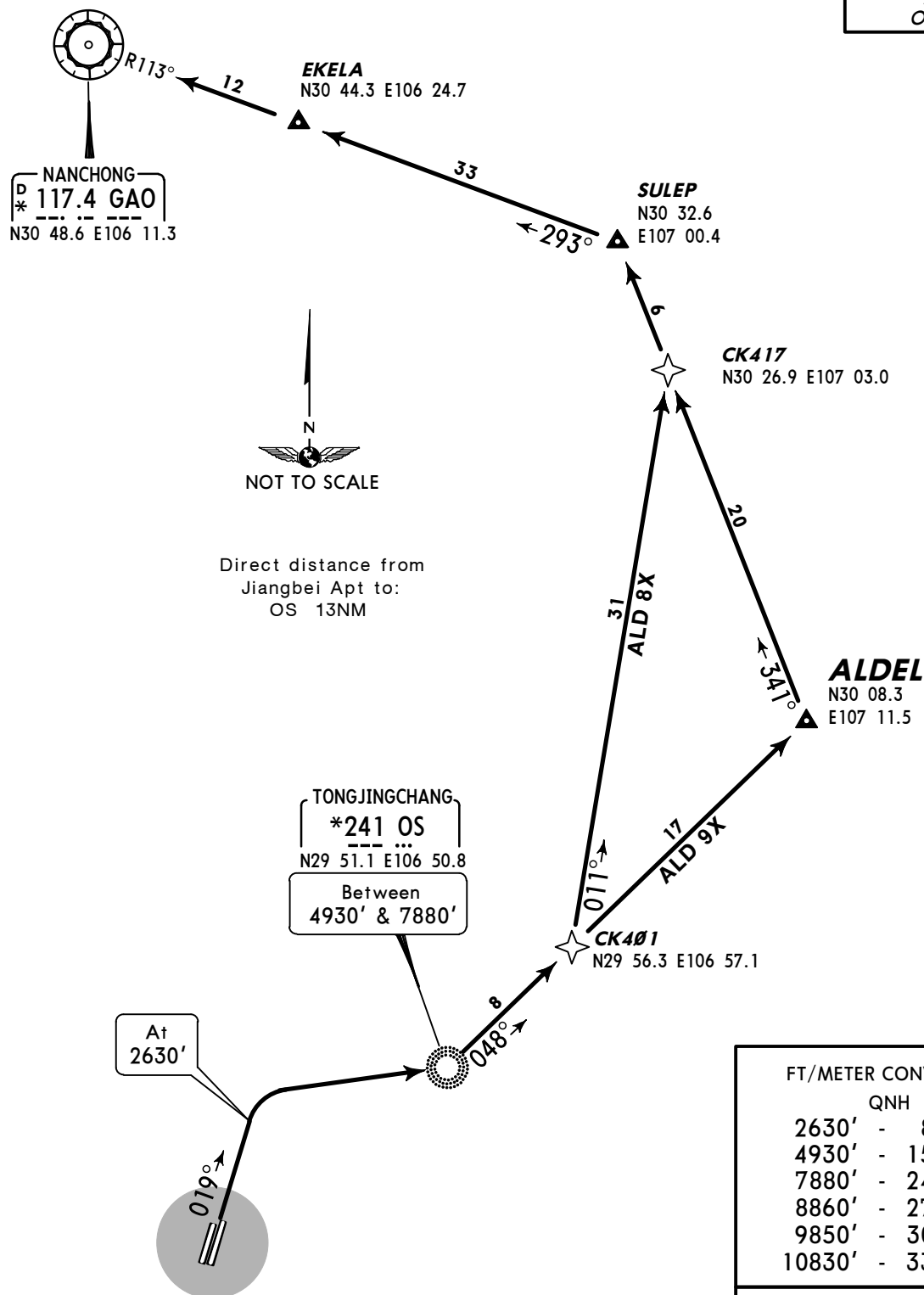
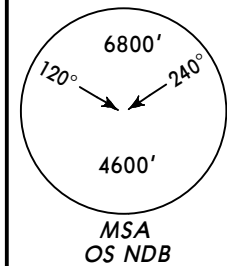
Apt Elev
1365'

Trans level: FL118 Trans alt: 9850'
 10830' 1031 hPa or above
 8860' 979 hPa or less

Do not turn before DER.

RNAV SID

ALD 8X, ALD 9X
RWYS 02L/R RNAV DEPARTURES
 RNAV (GNSS OR DME/DME/IRU REQUIRED)
 RNAV 1
 RADAR REQUIRED



FT/METER CONVERSION

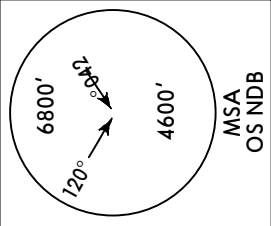
QNH	
2630'	- 800m
4930'	- 1500m
7880'	- 2400m
8860'	- 2700m
9850'	- 3000m
10830'	- 3300m

FL CONVERSION
FL118 **FL3600m**

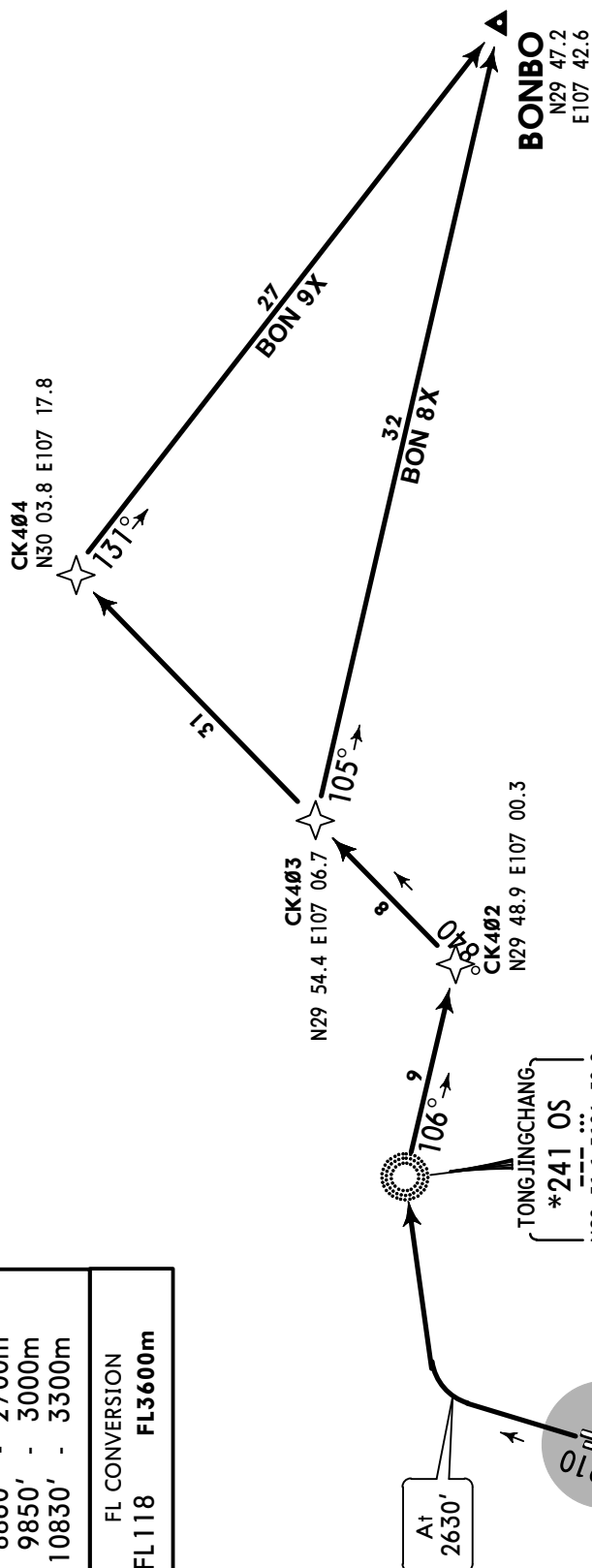
SID	ROUTING
ALD 8X	(2630') - OS (4930'+; 7880'-) - CK401 - CK417.
ALD 9X	(2630') - OS (4930'+; 7880'-) - ALDEL - CK417.

Trans level: FL118 Trans alt: 9850'
 10830' 1031 hPa or above
 8860' 979 hPa or less

Do not turn before DER.



BON 8X, BON 9X
RWYS 02L/R RNAV DEPARTURES
RNAV (GNSS OR DME/DME/IRU REQUIRED)
RNAV 1
RADAR REQUIRED



Direct distance from
Jiangbei Apt to:
OS 13NM

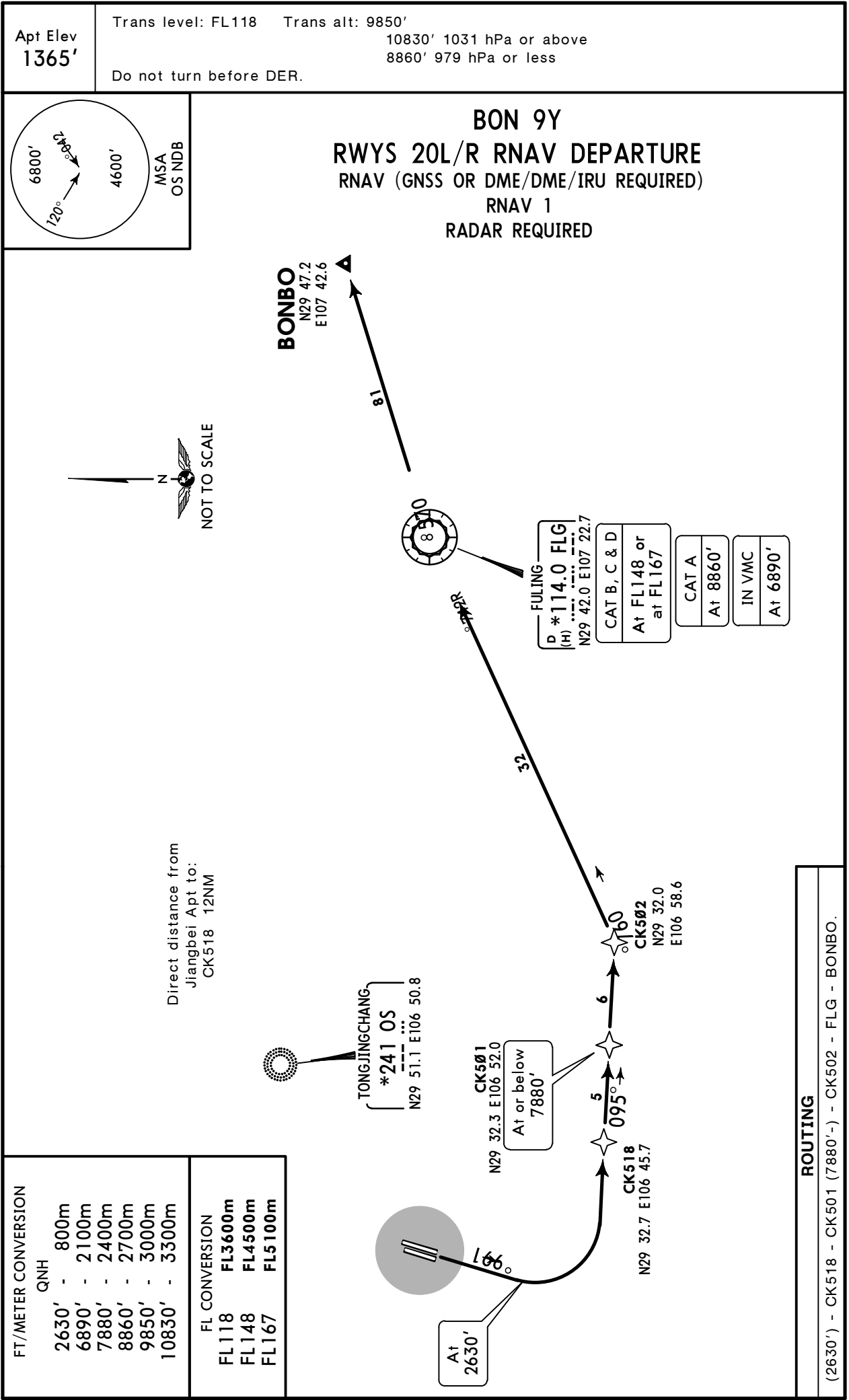
FT/METER CONVERSION	QNH
2630'	- 800m
4930'	- 1500m
7880'	- 2400m
8860'	- 2700m
9850'	- 3000m
10830'	- 3300m

FL CONVERSION
FL118 FL3600m

SID	ROUTING
BON 8X	(2630') - OS (4930' +; 7880' -) - CK 402 - CK 403 - BONBO.
BON 9X	(2630') - OS (4930' +; 7880' -) - CK 402 - CK 404 - BONBO.

ZUCK/CKG
JIANGBEI

JEPPesen CHONGQING, PR OF CHINA
27 MAR 15 10-3C Eff 1 Apr 1600Z RNAV SID



ZUCK/CKG
JIANGBEI

27 MAR 15 (10-3D)

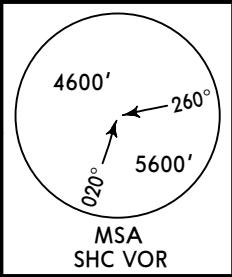
JEPPesen CHONGQING, PR OF CHINA
Eff 1 Apr 1600Z

RNAV SID

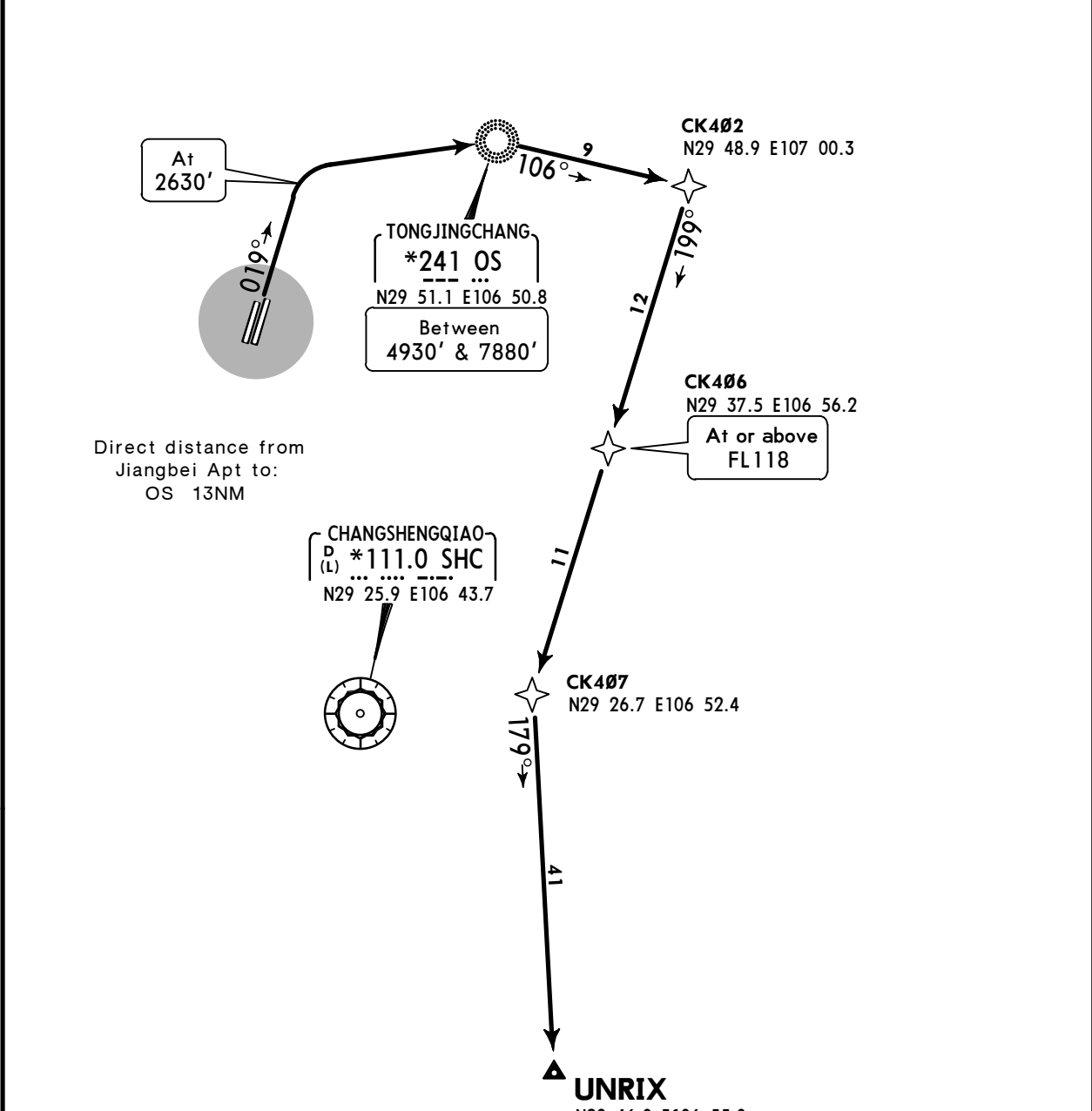
Apt Elev
1365'

Trans level: FL118 Trans alt: 9850'
10830' 1031 hPa or above
8860' 979 hPa or less

Do not turn before DER.



RIX 9X
RWYS 02L/R RNAV DEPARTURE
RNAV (GNSS OR DME/DME/IRU REQUIRED)
RNAV 1
RADAR REQUIRED



FT/METER CONVERSION	
QNH	
2630'	800m
4930'	1500m
7880'	2400m
8860'	2700m
9850'	3000m
10830'	3300m

FL CONVERSION	
FL118	FL3600m



ROUTING
(2630') - OS (4930'+; 7880'-) - CK402 - CK406 (FL118+) - CK407 - UNRIX.

ZUCK/CKG
JIANGBEI

27 MAR 15 (10-3E)

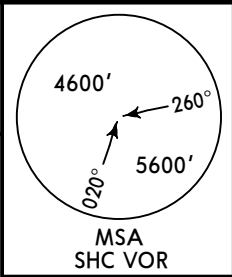
JEPPesen CHONGQING, PR OF CHINA
Eff 1 Apr 1600Z

RNAV SID

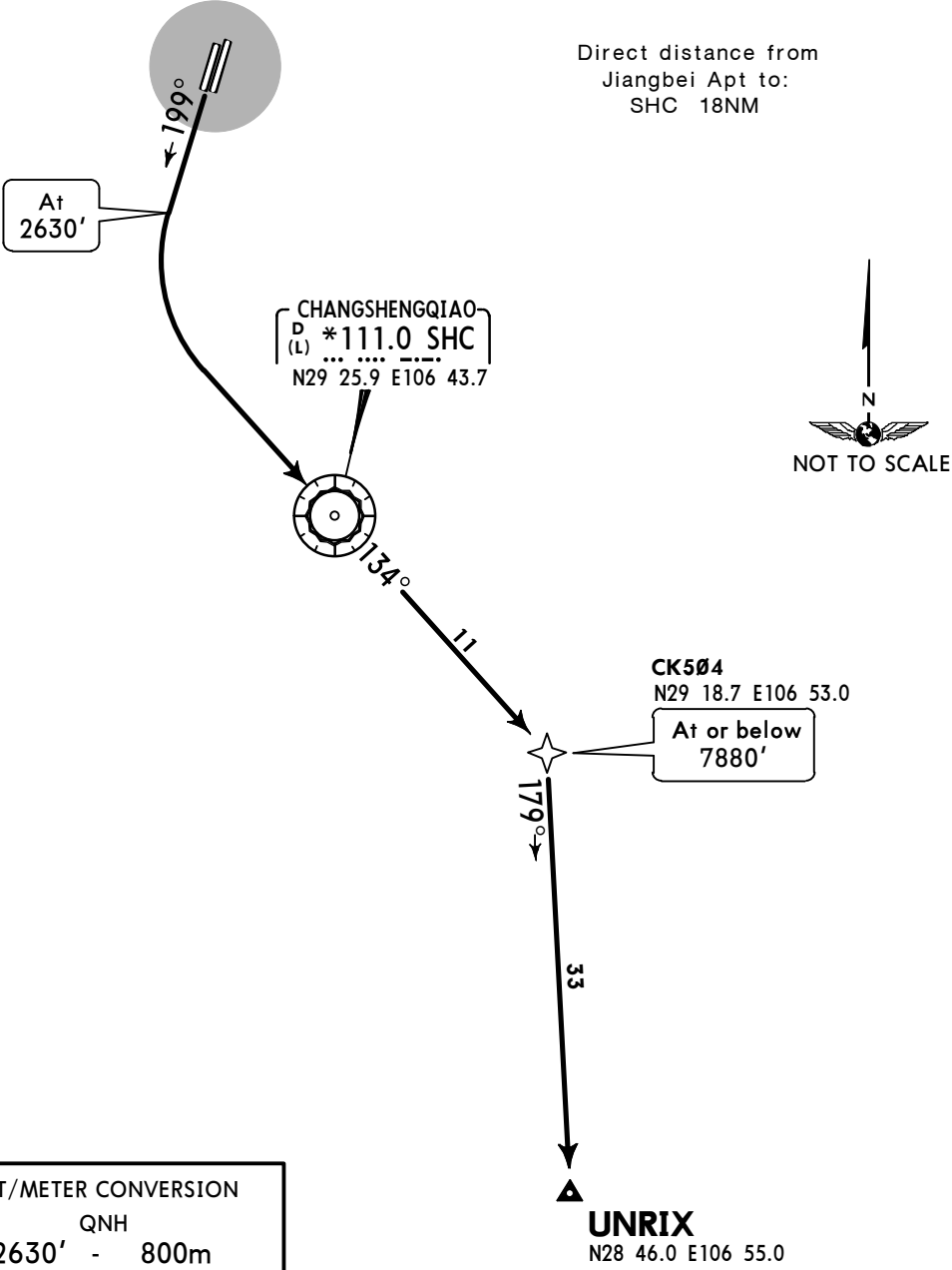
Apt Elev
1365'

Trans level: FL118 Trans alt: 9850'
10830' 1031 hPa or above
8860' 979 hPa or less

Do not turn before DER.



RIX 9Y
RWYS 20L/R RNAV DEPARTURE
RNAV (GNSS OR DME/DME/IRU REQUIRED)
RNAV 1
RADAR REQUIRED



FT/METER CONVERSION	
QNH	
2630'	- 800m
7880'	- 2400m
8860'	- 2700m
9850'	- 3000m
10830'	- 3300m

FL CONVERSION	
FL118	FL3600m

ROUTING
(2630') - SHC - CK504 (7880') - UNRIX.

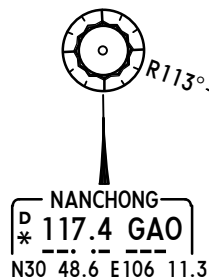
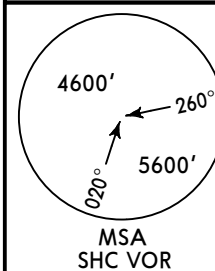
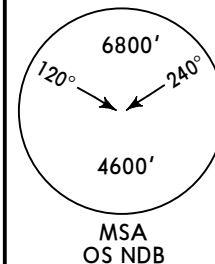
ZUCK/CKG
JIANGBEI

JEPPESEN CHONGQING, PR OF CHINA
27 MAR 15 **(10-3F)** **Eff 1 Apr 1600Z** **SID**

Apt Elev **1365'** Trans level: FL118 Trans alt: 9850'
10830' 1031 hPa or above
8860' 979 hPa or less

ALDEL 01D [ALD01D]
RWYS 02L/R DEPARTURE

ALDEL 11D [ALD11D]
RWYS 20L/R DEPARTURE



EKELA
N30 44.3 E106 24.7

SULEP
N30 32.6 E107 00.4

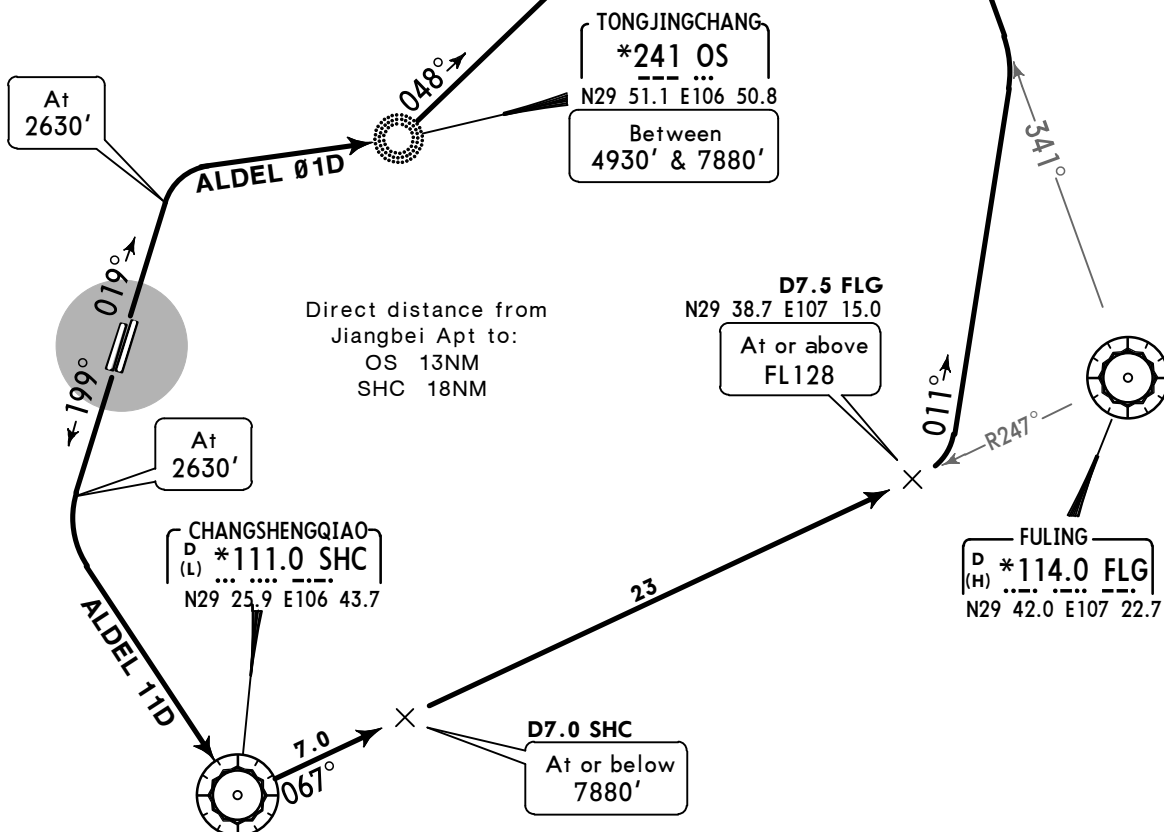
ALDEL
N30 08.3 E107 11.5

FT/METER CONVERSION

	QNH
2630'	- 800m
4930'	- 1500m
7880'	- 2400m
8860'	- 2700m
9850'	- 3000m
10830'	- 3300m

FL CONVERSION

FL118	FL3600m
FL128	FL3900m

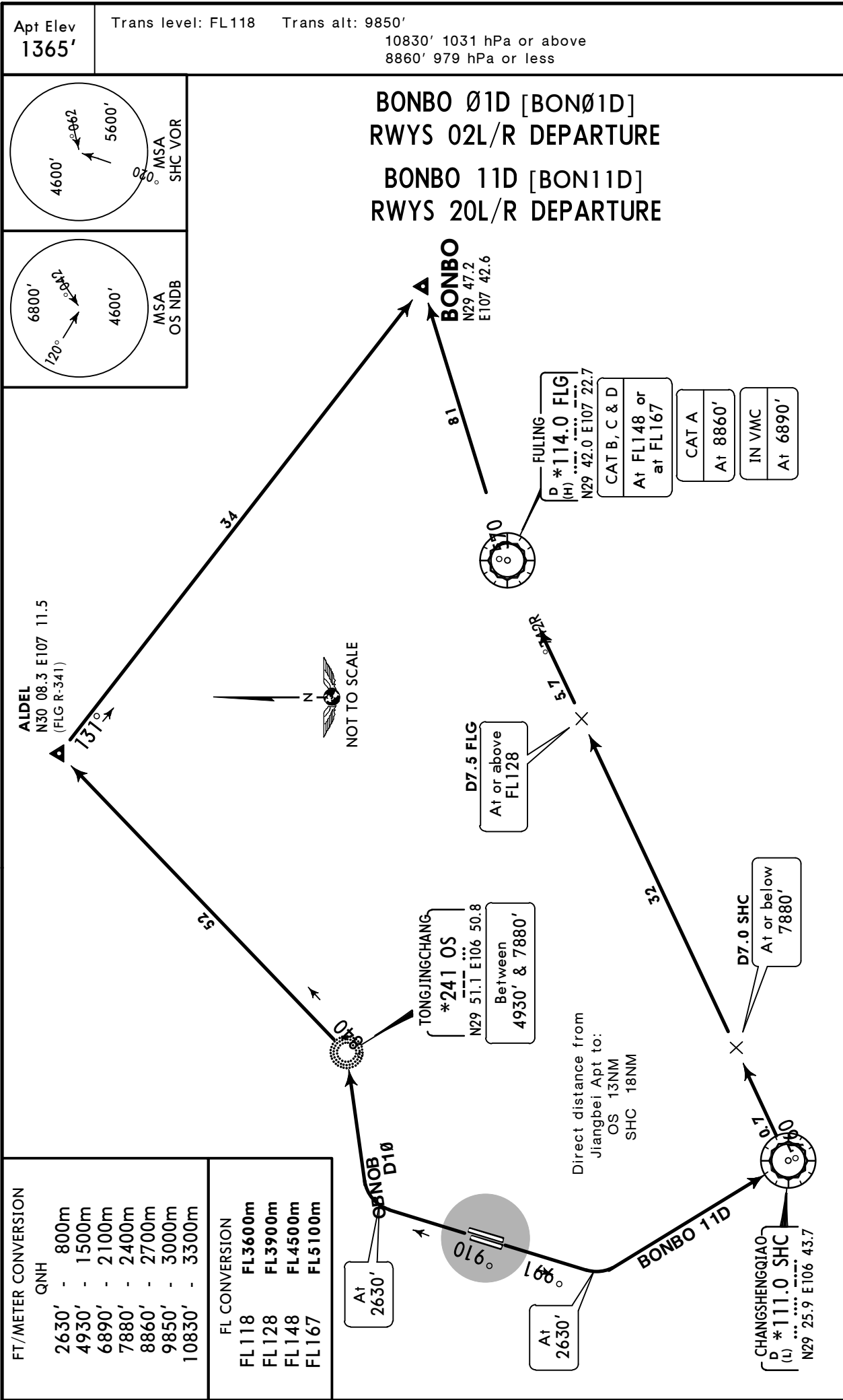


ZUCK/CKG
JIANGBEI

27 MAR 15 10-3G

Eff 1 Apr 1600Z

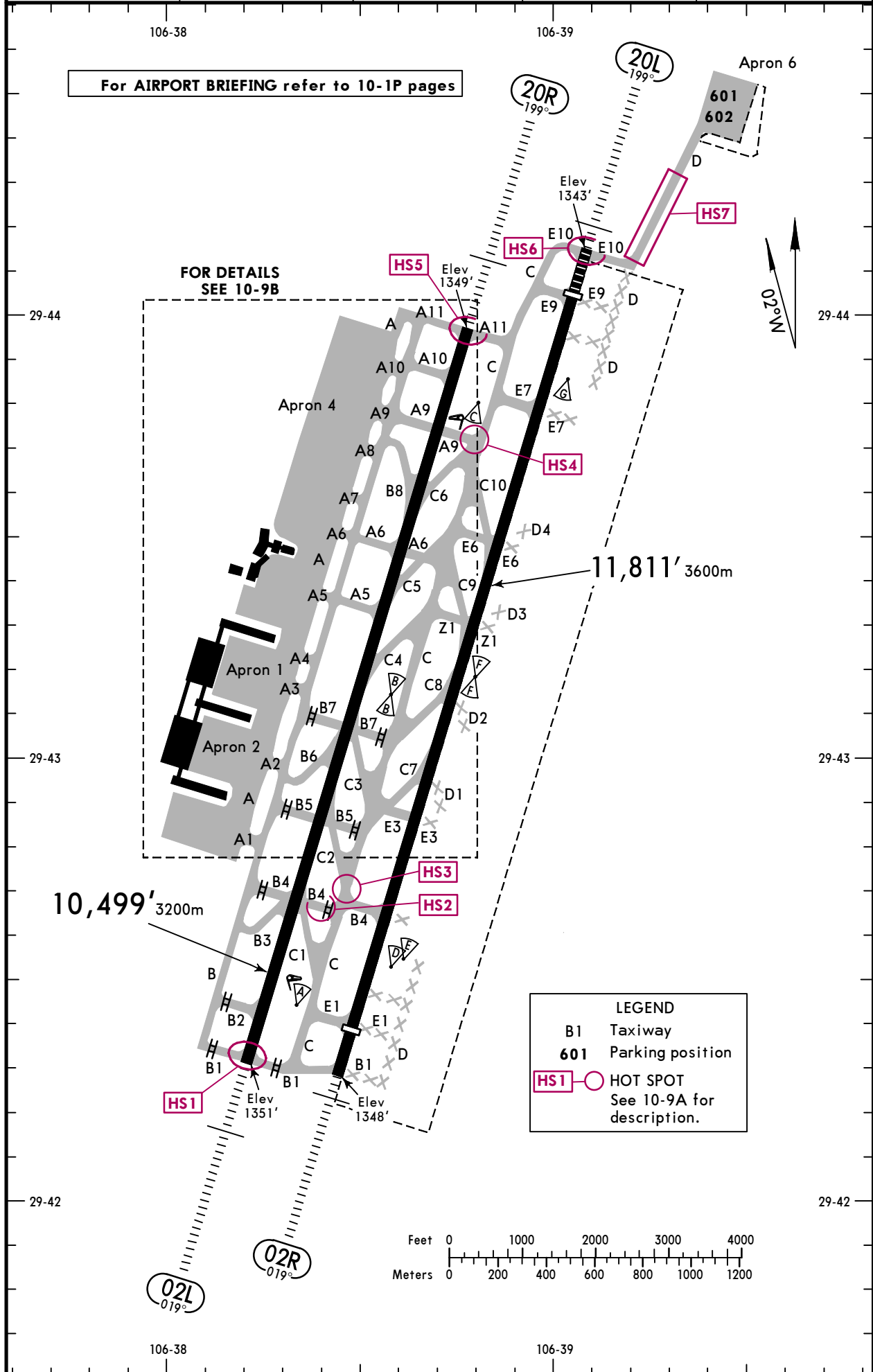
SID



ZUCK/CKG
Apt Elev **1365'**
N29 43.2 E106 38.4

JEPPesen CHONGQING, PR OF CHINA
18 MAR 16 **(10-9)** **Eff 30 Mar 1600Z** **JIANGBEI**

D-ATIS Departure	ACARS: *D-ATIS *DCL	*CHONGQING Delivery	*CHONGQING Ground	CHONGQING Tower
126.65		121.95	121.75	118.2 124.35



ZUCK/CKG

 **JEPPESENCHONGQING, PR OF CHINA**
18 MAR 16 **(10-9A)** **Eff 30 Mar 1600Z** **JIANGBEI**

ADDITIONAL RUNWAY INFORMATION						
RWY		USABLE LENGTHS		TAKE-OFF	WIDTH	
		Threshold	Landing Beyond Glide Slope			
02L ① 20R	HIRL (60m) CL (30m) HIALS SFL PAPI-L(3.0°) RVR		9505' 2897m 9567' 2916m	②	148' 45m	
① Runway grooved.						
② TAKE-OFF RUN AVAILABLE						
RWY 02L:		RWY 20R:				
From rwy head		10,499'(3200m)	From rwy head	10,499'(3200m)		
twy B2 int		9843'(3000m)	twy A10 int	9843'(3000m)		
02R ③ 20L	HIRL (60m) CL (30m) HIALS SFL PAPI-L(3.0°) RVR	11,155' 3400m	10,135' 3089m 10,158' 3096m	④	148' 45m	
③ Runway grooved.						
④ TAKE-OFF RUN AVAILABLE						
RWY 02R:		RWY 20L:				
From rwy head		11,811'(3600m)	From rwy head	11,811'(3600m)		
twy E1 int		11,155'(3400m)	twy E9 int	11,155'(3400m)		
<h3>HOT SPOT PROCEDURES</h3>						
(For information only, not to be construed as ATC instructions.)						
For the purpose of reducing errors that lead to ground conflicts and runway incursions, aircraft operating within the maneuvering area must follow the requirements below:						
HS1 <u>Intersection area of Twy B1 and Rwy 02L/20R</u>						
Aircraft shall receive ATC clearance before entering the area for taking-off or crossing Rwy 02L/20R.						
HS2 <u>Holding position on Twy B4 before crossing Rwy 20R</u>						
Aircraft holding at B4 shall contact ATC before crossing Rwy 20R.						
HS3 <u>Intersection of Twys B4 and C</u>						
HS4 <u>Holding position on Twy A9 before crossing Rwy 02L</u>						
Aircraft holding at A9 shall contact ATC before crossing Rwy 02L.						
HS5 <u>Intersection of Twy A11 and Rwy 02L/20R</u>						
Aircraft shall receive ATC clearance before entering the area for taking-off or crossing Rwy 02L/20R.						
HS6 <u>Intersection of Twy E10 and Rwy 02R/20L</u>						
Aircraft shall receive ATC clearance before entering the area for taking-off or crossing RWY 02R/20L.						
HS7 <u>Twy D & Rwy 20L ILS protected area</u>						
Aircraft shall contact ATC before entering Rwy 20L.						
Standard TAKE-OFF						
	RL					
	NIL (DAY only)					
2 TURB Eng or 3 & 4 Eng	RVR 400m		RVR 500m			
Other	VIS 1600m					

ZUCK/CKG

JEPPesenCHONGQING, PR OF CHINA

15 JUL 16

10-9B

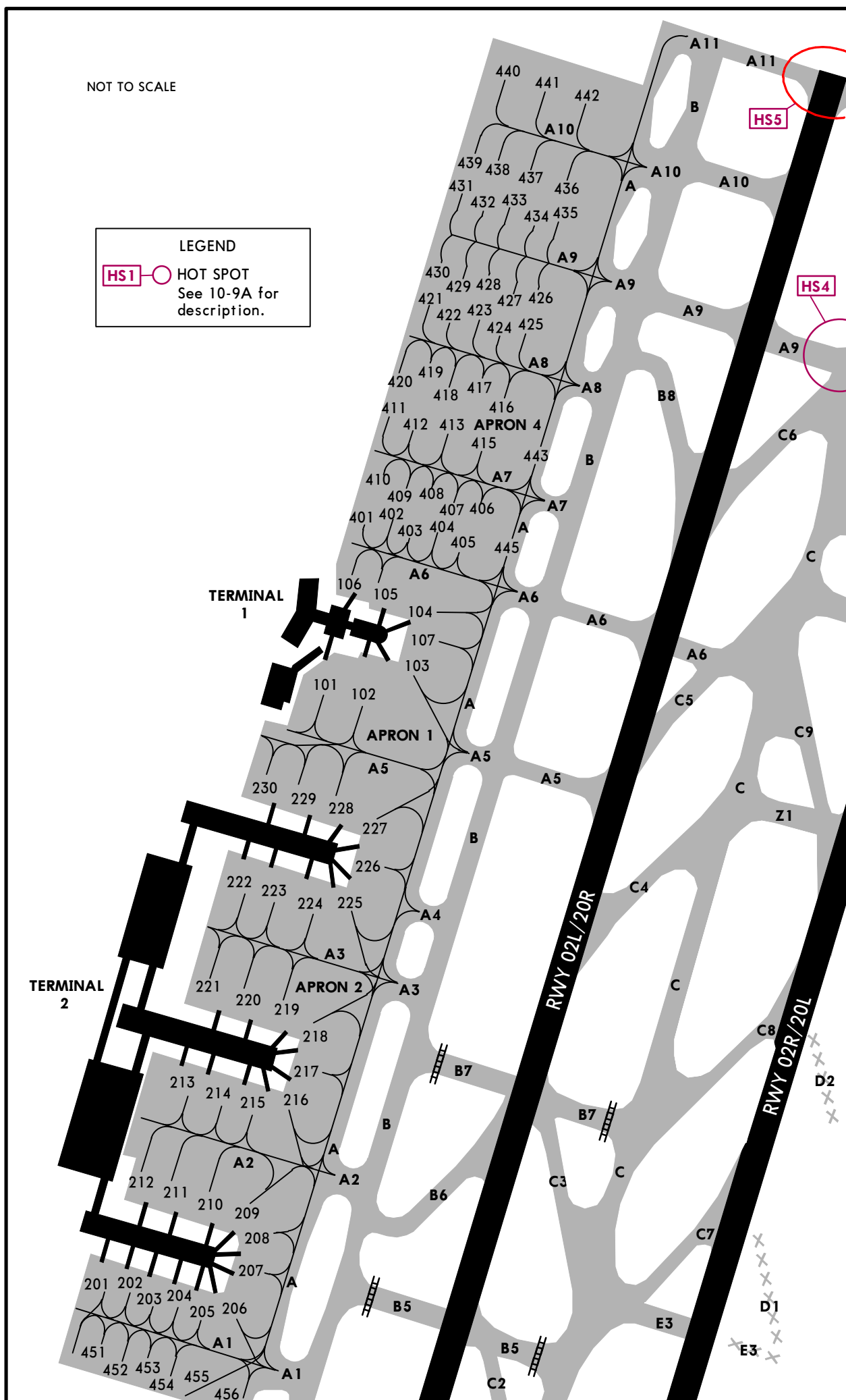
Eff 20 Jul 1600Z

JIANGBEI

NOT TO SCALE

LEGEND

HS1  **HOT SPOT**
See 10-9A for description.



CHANGES: Stand 104.

© JEPPESEN, 2005, 2016. ALL RIGHTS RESERVED.


ZUCK/CKG
JIANGBEI

15 MAY 15
Eff 27 May 1600Z

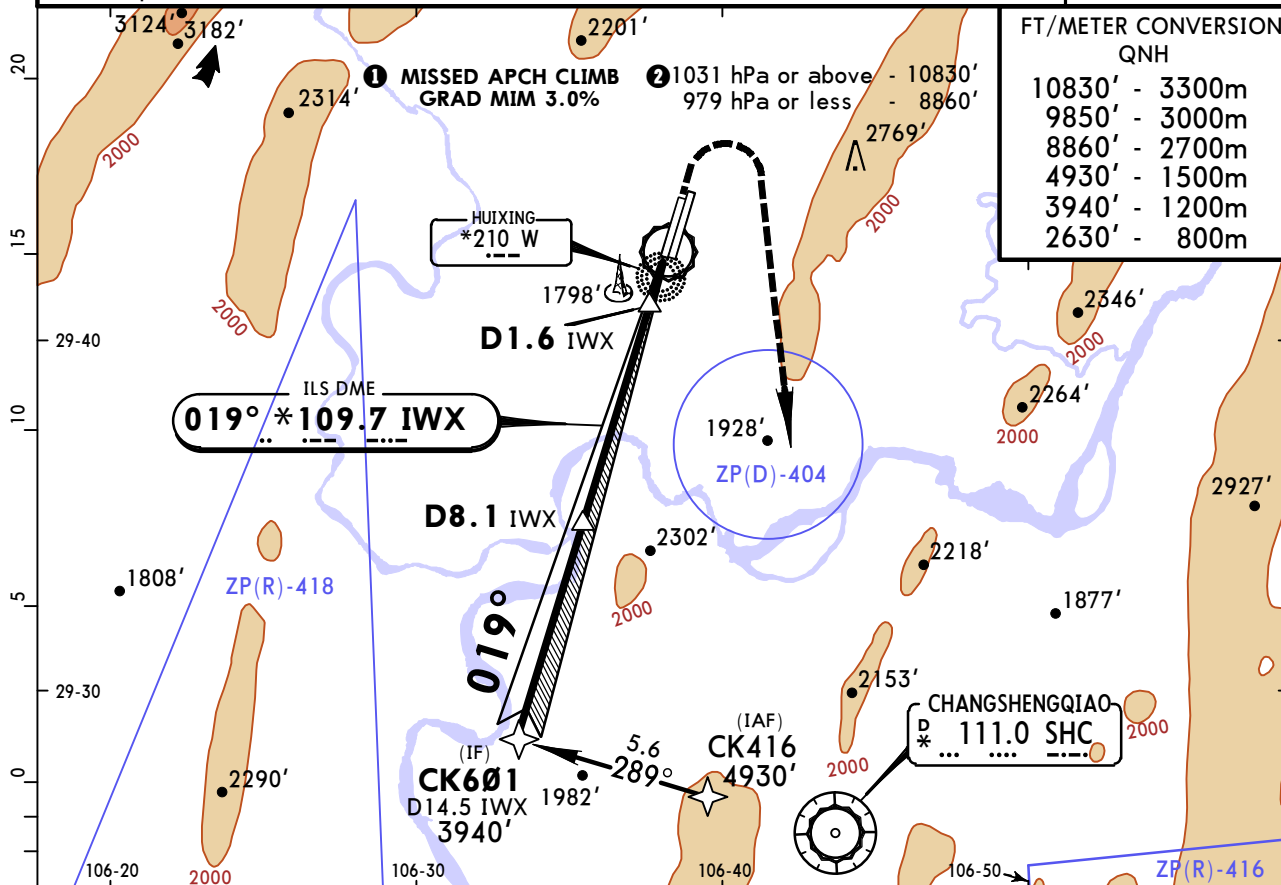
(11-1)

JEPPesen CHONGQING, PR OF CHINA
RNAV ILS DME Z Rwy 02L

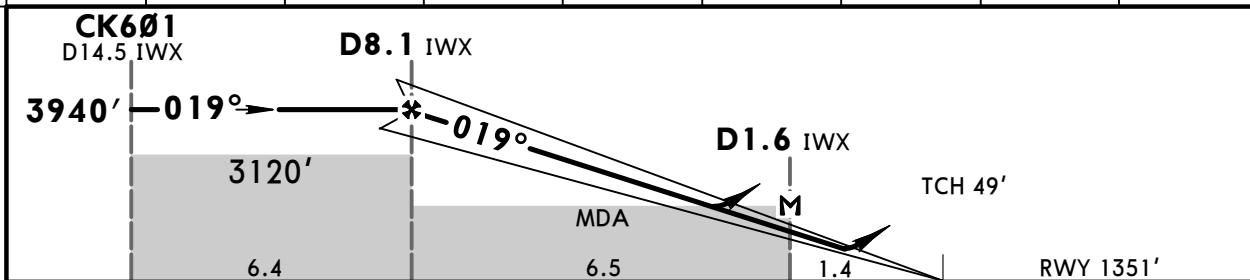
BRIEFING STRIP

D-ATIS Arrival		CHONGQING Approach (R)			CHONGQING Tower		*Ground
126.4		AP01 125.2	AP02 120.85	AP03 119.1	118.2	124.35	121.75
LOC IWX *109.7	Final Apch Crs 019°	GS No alt published		ILS DA(H) Refer to Minimums	Apt Elev 1365' RWY 1351'		
MISSED APCH: Climb STRAIGHT AHEAD to 2630', then turn RIGHT (MAX 205 KT) to reach SHC VOR at or above 4930'. Contact ATC.							
Alt Set: hPa		Rwy Elev: 49 hPa		Trans level: FL 118		Trans alt: 9850' ②	
Initial apch restricted to MAX 205 KT.							

MSA SHC VOR



LOC (GS out)	IWX DME	8.0	7.0	6.0	5.0	4.0	3.0	2.0
	ALTITUDE	3900'	3580'	3260'	2940'	2630'	2310'	1990'



Gnd speed-Kts	70	90	100	120	140	160	HTALS	2630'	205 KT	4930'	SHC
ILS GS or							PAPI		MAX	or above	
LOC Descent Angle	3.00°	372	478	531	637	743	849		RT		111.0
MAP at D1.6 IWX											

Standard						CIRCLE-TO-LAND			
STRAIGHT-IN LANDING RWY 02L Missed apch climb gradient mim 3.0%									
ILS AB: 1551' (200') CD: 1564' (213')			LOC (GS out) CDFA MDA(H) 1860' (509')						
FULL		Limited	ALS out	ALS out		Max Kts	MDA(H) VIS		
A				2300m		100	2100' (735')		
B						135			
C		RVR 550m VIS 800m	RVR 750m VIS 800m	1200m		180	3190' (1825')		
D				2300m		205	3190' (1825')		

ZUCK/CKG
JIANGBEI

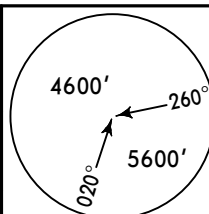
15 MAY 15
Eff 27 May 1600Z

(11-2)

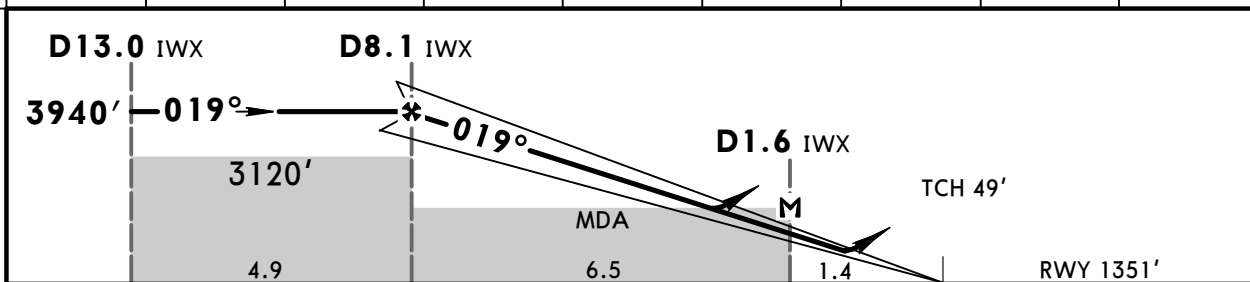
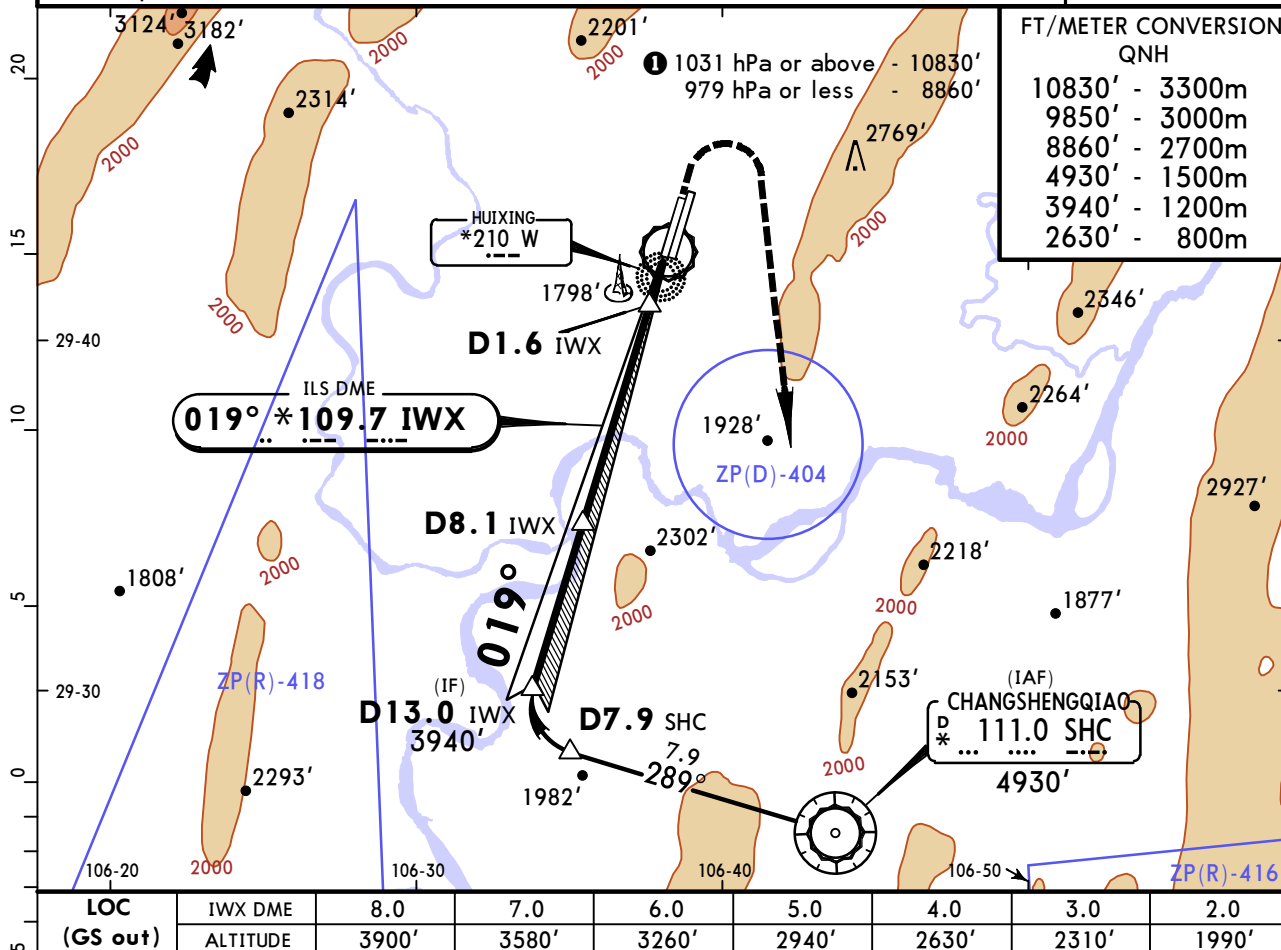
JEPPESSEN CHONGQING, PR OF CHINA
MISSED APCH CLIMB ILS DME Y Rwy 02L
GRADIENT MIM 3.0%

BRIEFING STRIP

TM

D-ATIS Arrival		CHONGQING Approach (R)			CHONGQING Tower		*Ground
126.4		AP01 125.2	AP02 120.85	AP03 119.1	118.2	124.35	121.75
LOC IWX *109.7	Final Apch Crs 019°	GS No alt published		ILS DA(H) Refer to Minimums	Apt Elev 1365' RWY 1351'		
MISSED APCH: Climb STRAIGHT AHEAD to 2630', then turn RIGHT (MAX 205 KT) to reach SHC VOR at or above 4930'. Contact ATC.							
Alt Set: hPa		Rwy Elev: 49 hPa		Trans level: FL 118		Trans alt: 9850' ①	
Initial apch restricted to MAX 205 KT.							

MSA SHC VOR



Gnd speed-Kts	70	90	100	120	140	160	HIALS	2630'	205 KT	4930'	SHC
ILS GS or							PAPI		MAX	or above	111.0
LOC Descent Angle	3.00°	372	478	531	637	743	849		RT		
MAP at D1.6 IWX											

Standard						CIRCLE-TO-LAND			
STRAIGHT-IN LANDING RWY 02L						CIRCLE-TO-LAND			
Missed apch climb gradient mim 3.0%						CIRCLE-TO-LAND			
ILS			LOC (GS out)			CIRCLE-TO-LAND			
AB: 1551' (200')			CDFA			CIRCLE-TO-LAND			
CD: 1564' (213')			MDA(H) 1860' (509')			CIRCLE-TO-LAND			
FULL		Limited	ALS out	ALS out		Max Kts	MDA(H)	VIS	
A						100	2100' (735')	3100m	
B						135			
C	RVR 550m VIS 800m	RVR 750m VIS 800m	1200m			180	3190' (1825')	4400m	
D				2300m	2400m	205	3190' (1825')	5000m	

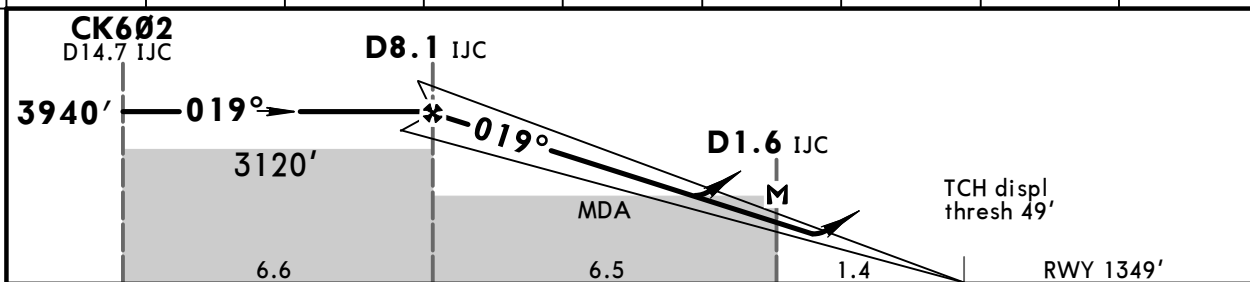
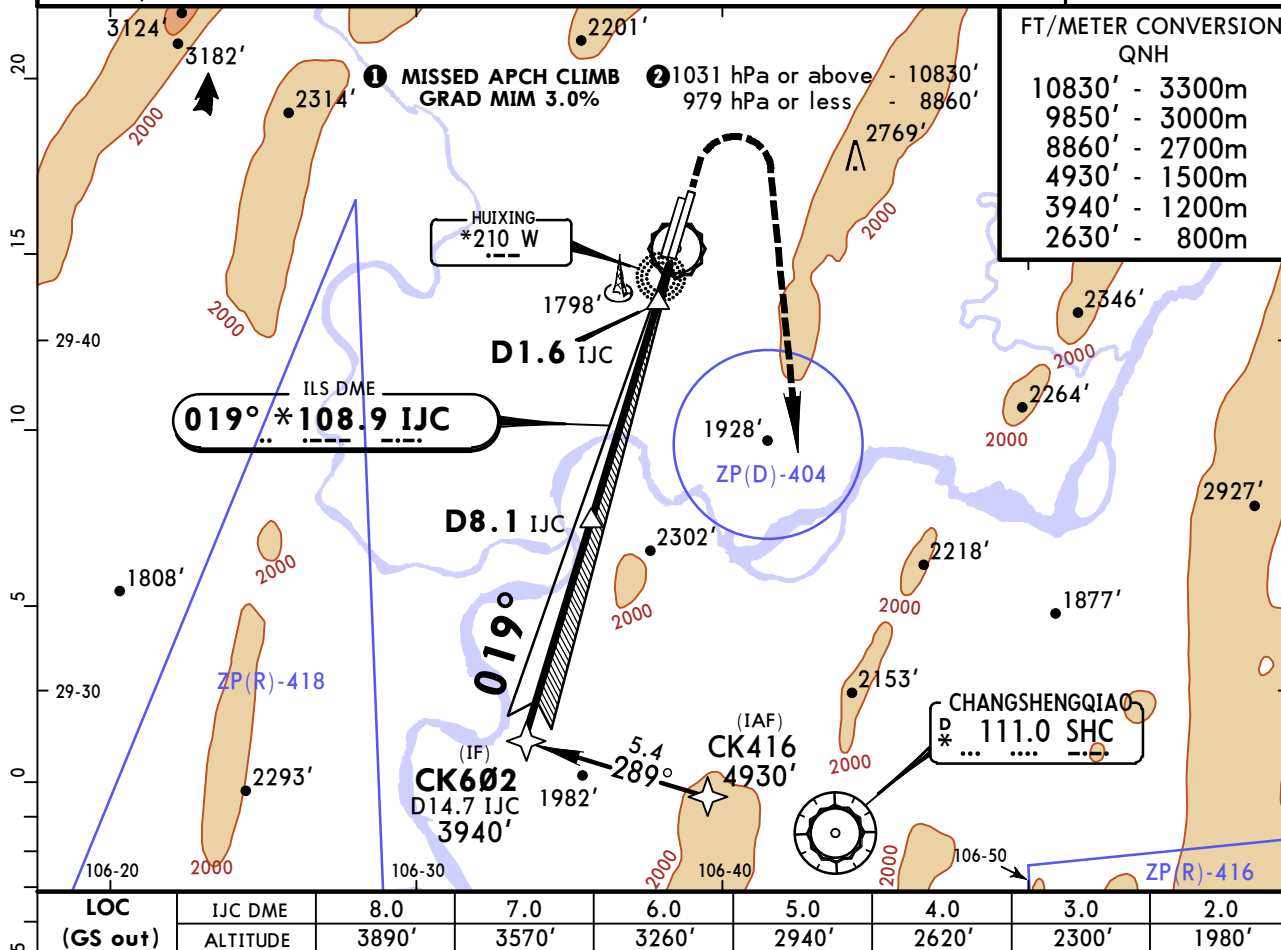
ZUCK/CKG
JIANGBEI

15 MAY 15
Eff 27 May 1600Z

JEPPESSEN CHONGQING, PR OF CHINA
11-3 **ORNAV ILS DME Z Rwy 02R**

BRIEFING STRIP™

D-ATIS Arrival		CHONGQING Approach (R)			CHONGQING Tower		*Ground
126.4		AP01 125.2	AP02 120.85	AP03 119.1	118.2	124.35	121.75
LOC IJC *108.9	Final Apch Crs 019°	GS No alt published		ILS DA(H) Refer to Minimums	Apt Elev 1365' RWY 1349'		<p>4600' 260° 5600' 020°</p> <p>MSA SHC VOR</p>
MISSED APCH: Climb STRAIGHT AHEAD to 2630', then turn RIGHT (MAX 205 KT) to reach SHC VOR at or above 4930'. Contact ATC.							
Alt Set: hPa		Rwy Elev: 48 hPa		Trans level: FL 118		Trans alt: 9850' ②	
Initial apch restricted to MAX 205 KT.							



Gnd speed-Kts	70	90	100	120	140	160	HTALS	2630'	205 KT	4930'	SHC
ILS GS or							PAPI	↑	MAX	or above	111.0
LOC Descent Angle	3.00°	372	478	531	637	743	849		RT		
MAP at D1.6 IJC											

Standard						CIRCLE-TO-LAND			
STRAIGHT-IN LANDING RWY 02R						Missed apch climb gradient mim 3.0%			
ILS			LOC (GS out)						
DA(H)			CDFA						
AB: 1549' (200')			MDA(H) 1860' (511')						
CD: 1562' (213')									
FULL			Limited						
ALS out			ALS out						
Max Kts			MDA(H)			VIS			
A			2300m			2100' (735')			
B						3100m			
C			1200m			3190' (1825')			
RVR 550m			RVR 750m			4400m			
VIS 800m			VIS 800m			5000m			
D			2300m			3190' (1825')			
			2400m						

ZUCK/CKG
JIANGBEI

9 OCT 15

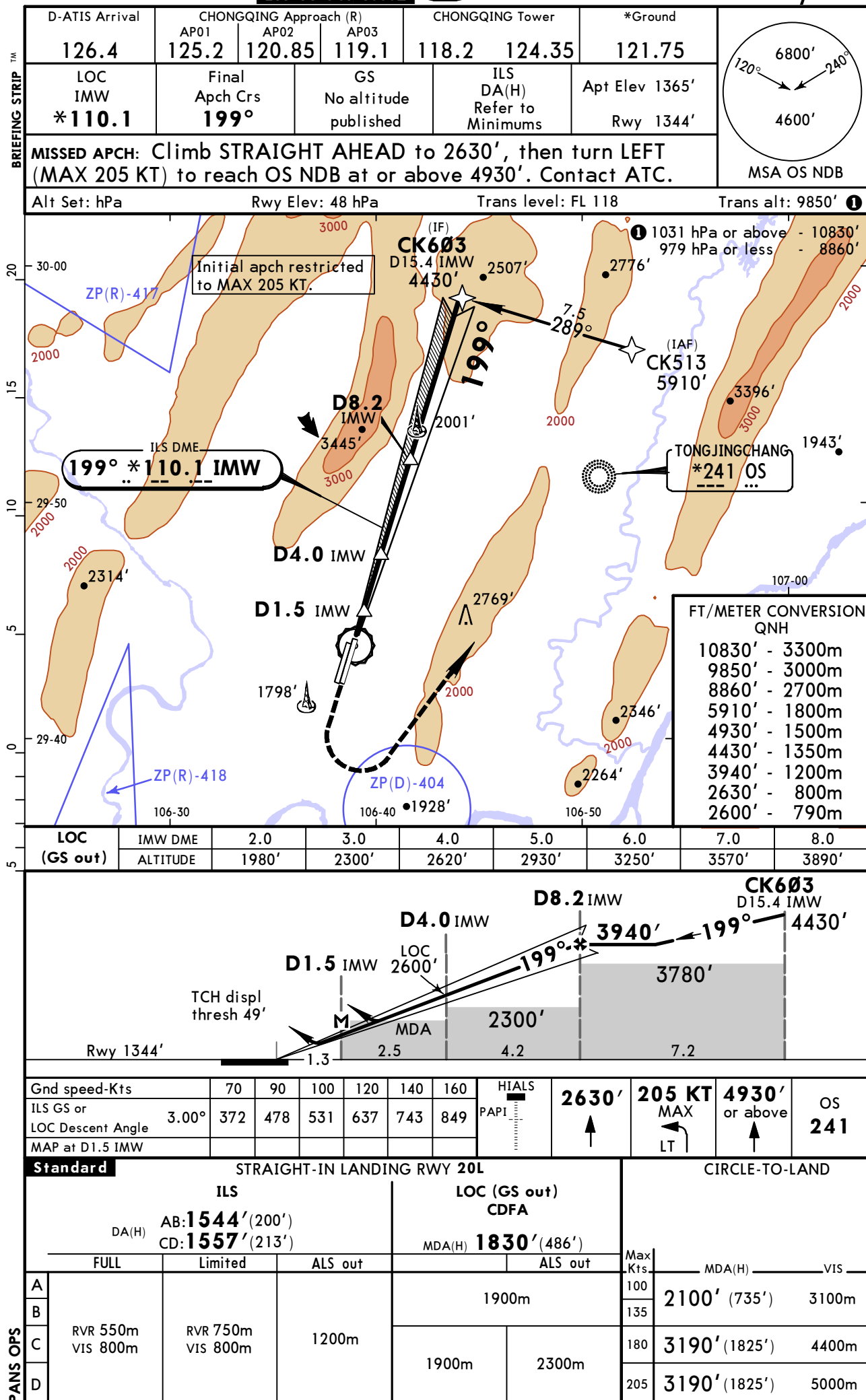
Eff 14 Oct 1600Z

(11-5)

JEPPESSEN

CHONGQING, PR OF CHINA

RNAV ILS DME Z Rwy 20L



ZUCK/CKG
JIANGBEI

9 OCT 15
Eff 14 Oct 1600Z

11-6

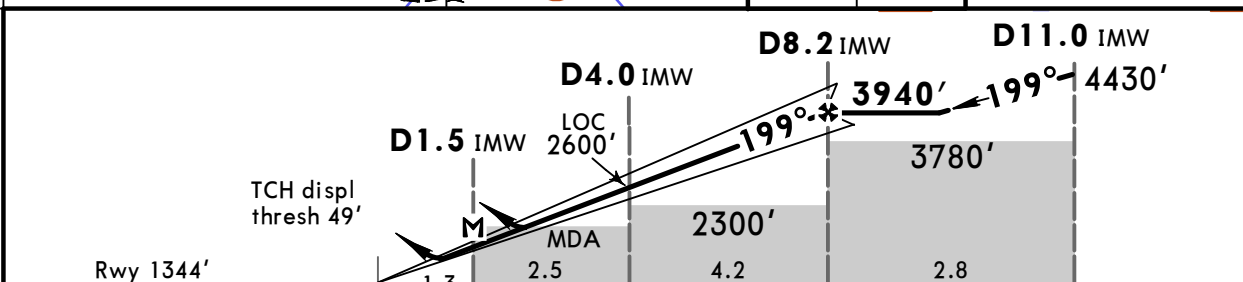
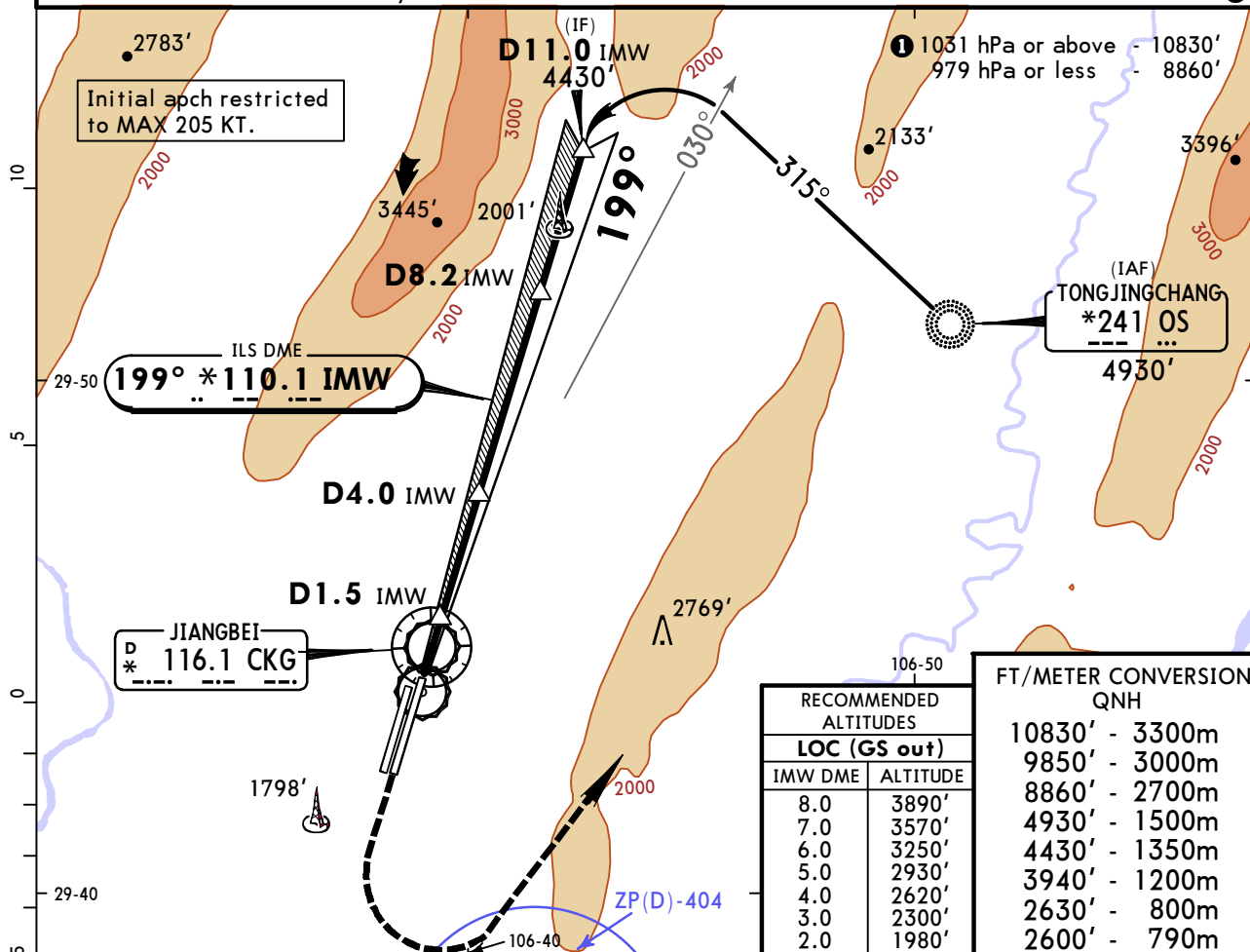
JEPPESSEN CHONGQING, PR OF CHINA
ILS DME Y Rwy 20L

BRIEFING STRIP

TH

D-ATIS Arrival	CHONGQING Approach (R)			CHONGQING Tower		*Ground	<div><div><div>120°</div><div>6800'</div><div>240°</div><div>4600'</div></div><div>MSA OS NDB</div></div>
126.4	AP01 125.2	AP02 120.85	AP03 119.1	118.2	124.35	121.75	
LOC IMW *110.1	Final Apch Crs 199°		GS No altitude published		ILS DA(H) Refer to Minimums	Apt Elev 1365' Rwy 1344'	
MISSED APCH: Climb STRAIGHT AHEAD to 2630', then turn LEFT (MAX 205 KT) to reach OS NDB at or above 4930'. Contact ATC.							

Alt Set: hPa Rwy Elev: 48 hPa Trans level: FL 118 Trans alt: 9850' ①



Gnd speed-Kts	70	90	100	120	140	160	HIALS	2630'	205 KT	4930'	OS
ILS GS or	3.00°	372	478	531	637	743	849	PAPI	MAX	or above	241
LOC Descent Angle									LT		
MAP at D1.5 IMW											

STRAIGHT-IN LANDING RWY 20L						CIRCLE-TO-LAND		
ILS			LOC (GS out) CDFA					
DA(H) AB:1544'(200') CD:1557'(213')			MDA(H) 1830'(486')					
FULL		Limited	ALS out	ALS out		Max Kts	MDA(H)	VIS
				1900m		100	2100' (735')	3100m
						135		
RVR 550m VIS 800m		RVR 750m VIS 800m	1200m	1900m	2300m	180	3190' (1825')	4400m
						205	3190' (1825')	5000m

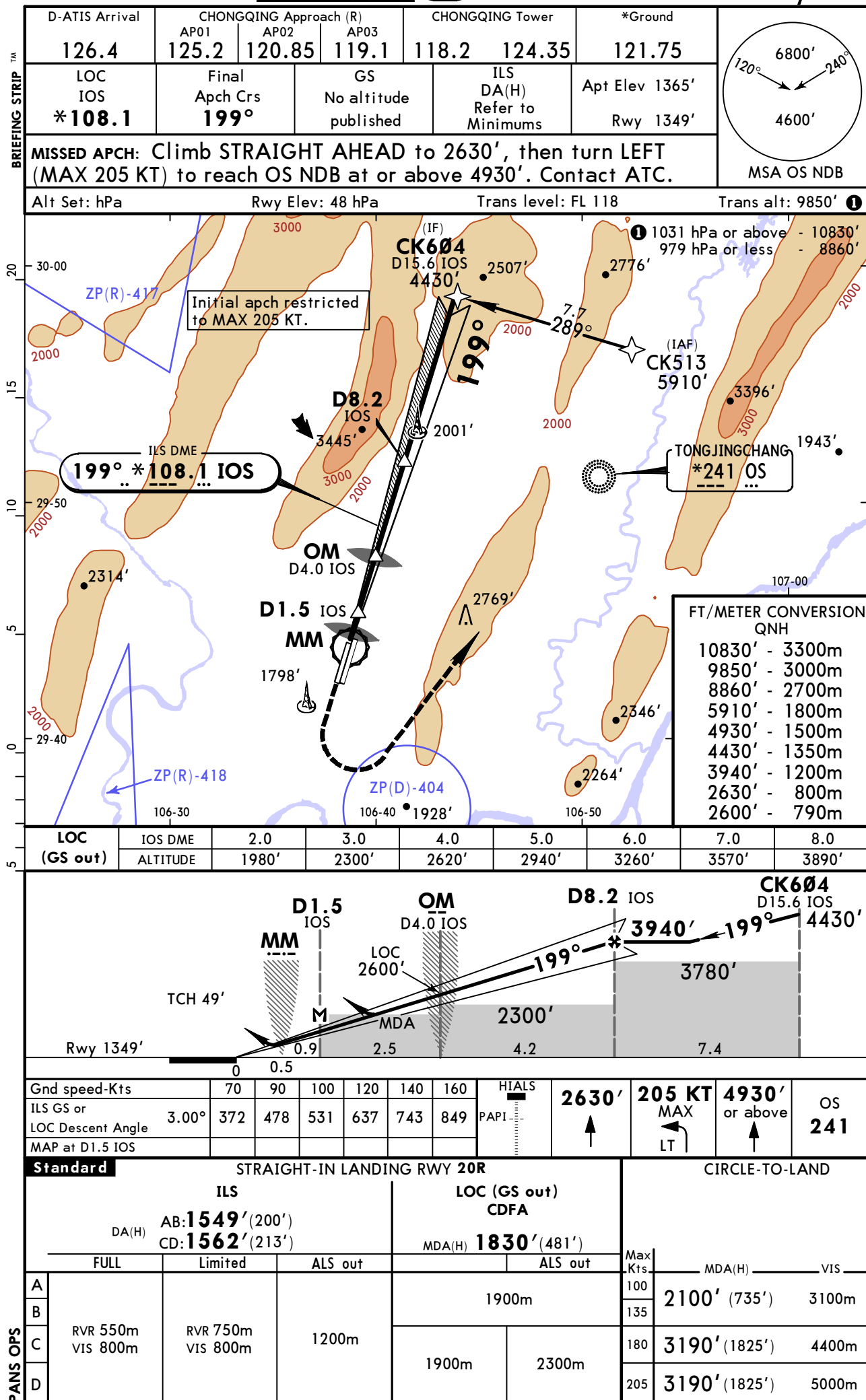
CHANGES: MAP. Recommended altitudes. Minimums.

© JEPPESSEN, 2010, 2015. ALL RIGHTS RESERVED.

ZUCK/CKG
JIANGBEI

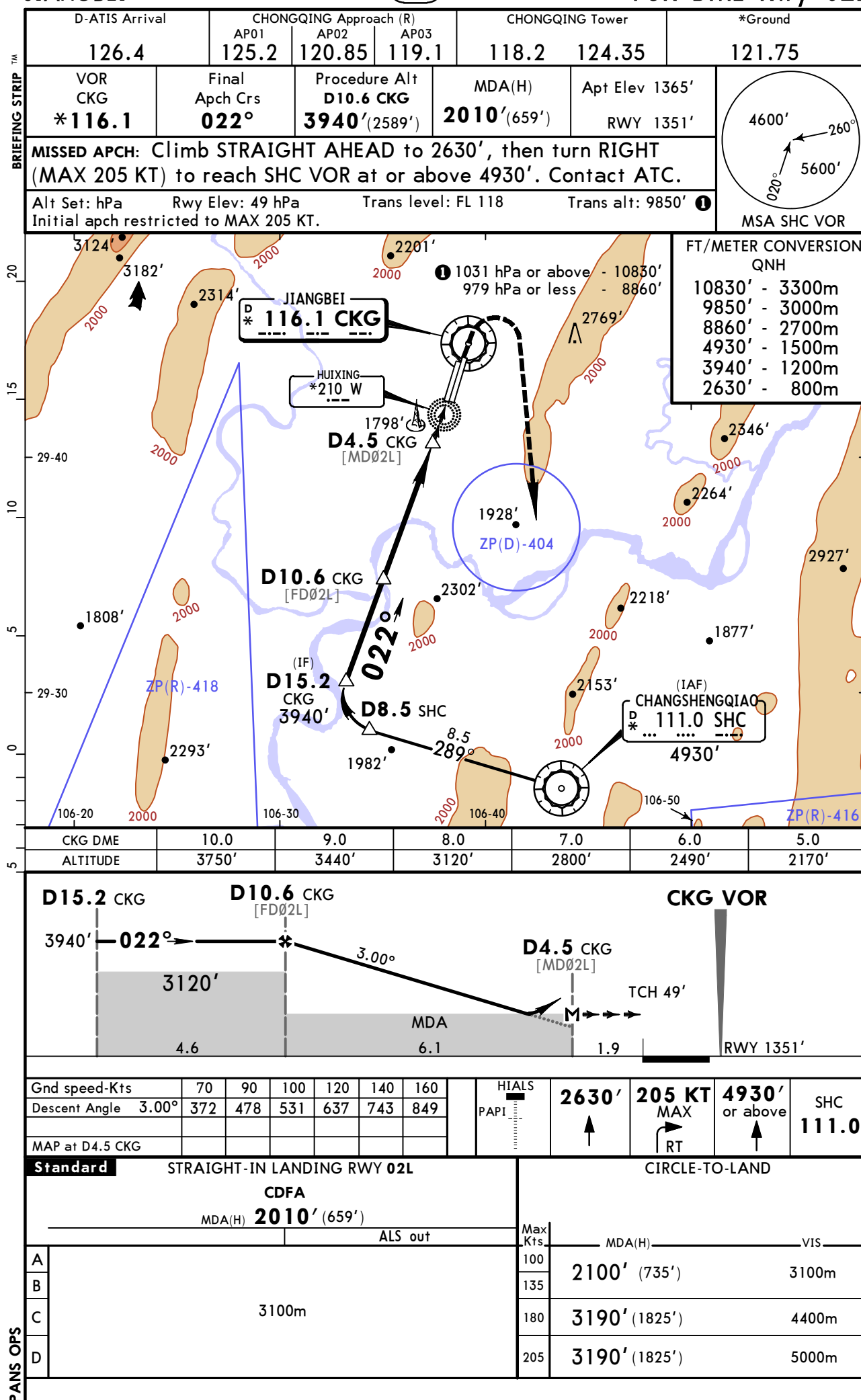
9 OCT 15
Eff 14 Oct 1600Z (11-7)

CHONGQING, PR OF CHINA
RNAV ILS DME Z Rwy 20R



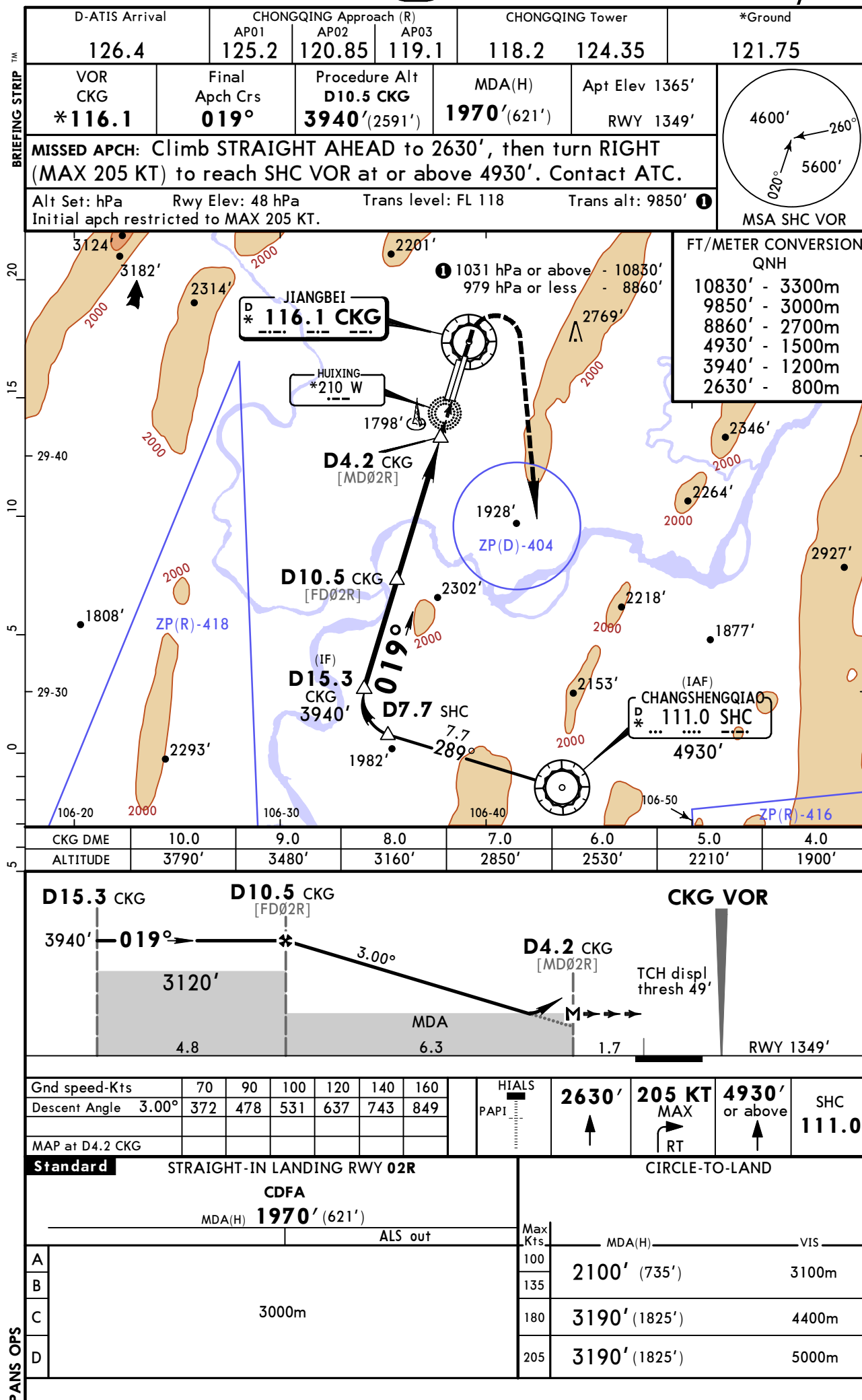
ZUCK/CKG
JIANGBEI

JEPPESSEN CHONGQING, PR OF CHINA
15 MAY 15 **(13-1)** **Eff 27 May 1600Z** **VOR DME Rwy 02L**



ZUCK/CKG
JIANGBEI

JEPPESSEN CHONGQING, PR OF CHINA
15 MAY 15 **(13-2)** **Eff 27 May 1600Z** **VOR DME Rwy 02R**

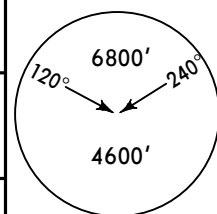


ZUCK/CKG
JIANGBEI

9 OCT 15
Eff 14 Oct 1600Z **(13-3)**

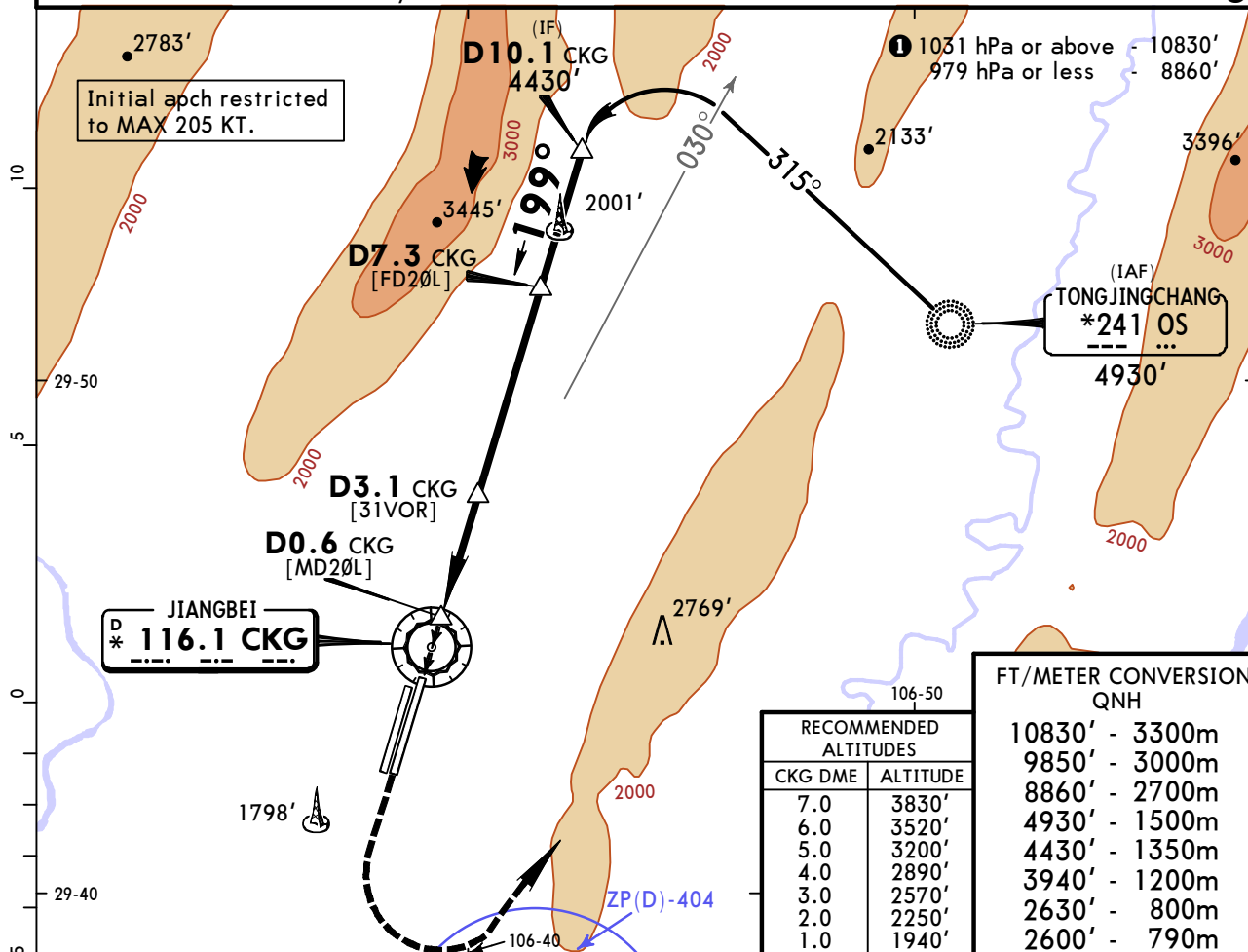
JEPPESSEN CHONGQING, PR OF CHINA
VOR DME Rwy 20L

D-ATIS Arrival	CHONGQING Approach (R)			CHONGQING Tower		*Ground
126.4	AP01 125.2	AP02 120.85	AP03 119.1	118.2	124.35	121.75
VOR CKG *116.1	Final Apch Crs 199°	Procedure Alt D7.3 CKG 3940' (2596')		MDA(H) 1830' (486')	Apt Elev 1365' Rwy 1344'	



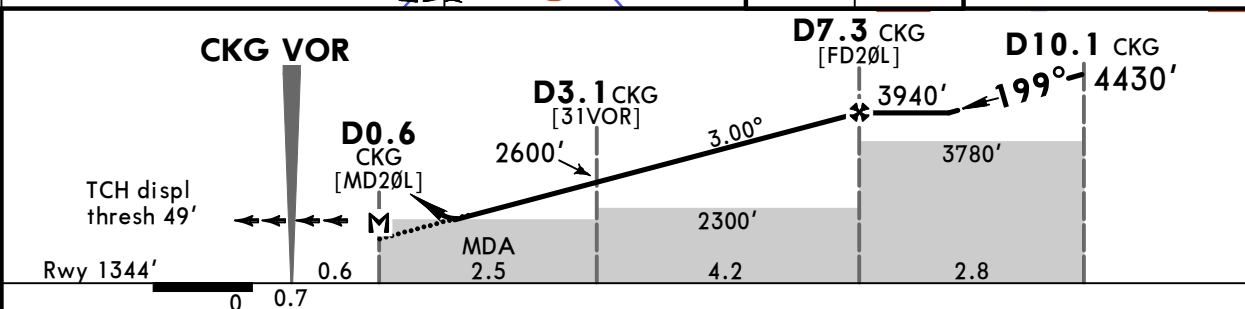
MISSED APCH: Climb STRAIGHT AHEAD to 2630', then turn LEFT (MAX 205 KT) to reach OS NDB at or above 4930'. Contact ATC.

Alt Set: hPa Rwy Elev: 48 hPa Trans level: FL 118 Trans alt: 9850' **1**



RECOMMENDED ALTITUDES	
CKG DME	ALTITUDE
7.0	3830'
6.0	3520'
5.0	3200'
4.0	2890'
3.0	2570'
2.0	2250'
1.0	1940'

FT/METER CONVERSION QNH	
10830'	3300m
9850'	3000m
8860'	2700m
4930'	1500m
4430'	1350m
3940'	1200m
2630'	800m
2600'	790m



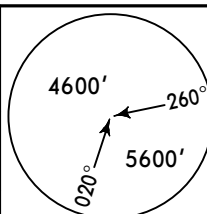
Gnd speed-Kts	70	90	100	120	140	160	HIALS PAPI	2630'	205 KT MAX LT	4930' or above	OS 241
Descent Angle	3.00°	372	478	531	637	743					
MAP at D0.6 CKG											

STRAIGHT-IN LANDING RWY 20L				CIRCLE-TO-LAND	
CDFA				Max Kts	
MDA(H) 1830' (486')					
ALS out					
A	1900m			100	2100' (735')
B				135	3100m
C	1900m	2300m		180	3190' (1825')
D				205	5000m

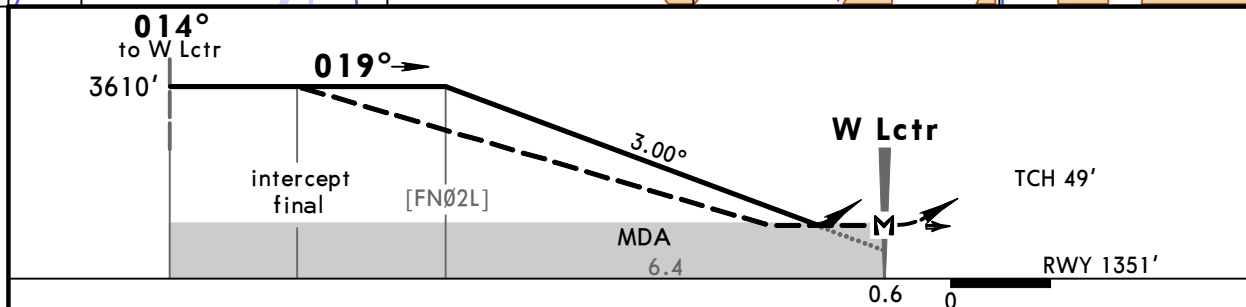
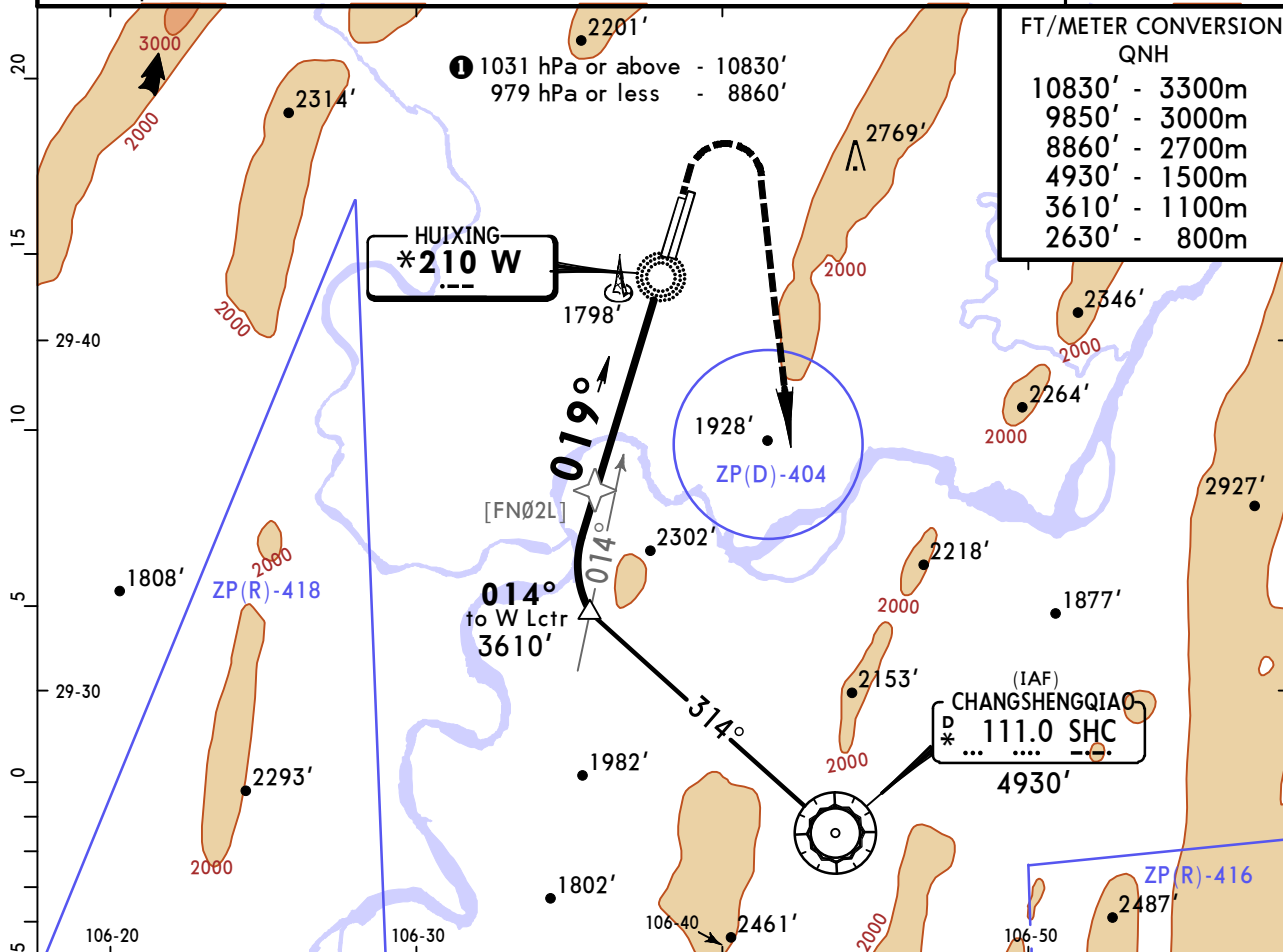
ZUCK/CKG
JIANGBEI

JEPPESSEN CHONGQING, PR OF CHINA
15 MAY 15 **(16-1)** **Eff 27 May 1600Z** **NDB Rwy 02L**

BRIEFING STRIP™

D-ATIS Arrival		CHONGQING Approach (R)			CHONGQING Tower		*Ground
126.4		AP01 125.2	AP02 120.85	AP03 119.1	118.2	124.35	121.75
Lctr W *210	Final Apch Crs 019°	Procedure Alt No FAF		MDA(H) 1970'(619')	Apt Elev 1365' RWY 1351'		
MISSED APCH: Climb STRAIGHT AHEAD to 2630', then turn RIGHT (MAX 205 KT) to reach SHC VOR at or above 4930'. Contact ATC.							
Alt Set: hPa		Rwy Elev: 49 hPa		Trans level: FL 118		Trans alt: 9850' ①	
Initial apch restricted to MAX 205 KT.							

MSA SHC VOR



Gnd speed-Kts	70	90	100	120	140	160	HIALS PAPI	2630'	205 KT MAX RT	4930' or above	SHC 111.0
Descent Angle	3.00°	372	478	531	637	849					
MAP at W Lctr											

PANS OPS	STRAIGHT-IN LANDING RWY 02L				CIRCLE-TO-LAND	
	CDFA		non-CDFA		Max Kts	
	MDA(H) 1970' (619')		MDA(H) 1970' (619')			
	ALS out		ALS out			
A					100	2100' (735')
B					135	3100m
C	2900m		2900m		180	3190' (1825')
D					205	5000m

ZUCK/CKG
JIANGBEI

JEPPESSEN CHONGQING, PR OF CHINA
15 MAY 15 **(16-2)** **Eff 27 May 1600Z** **NDB Rwy 20R**

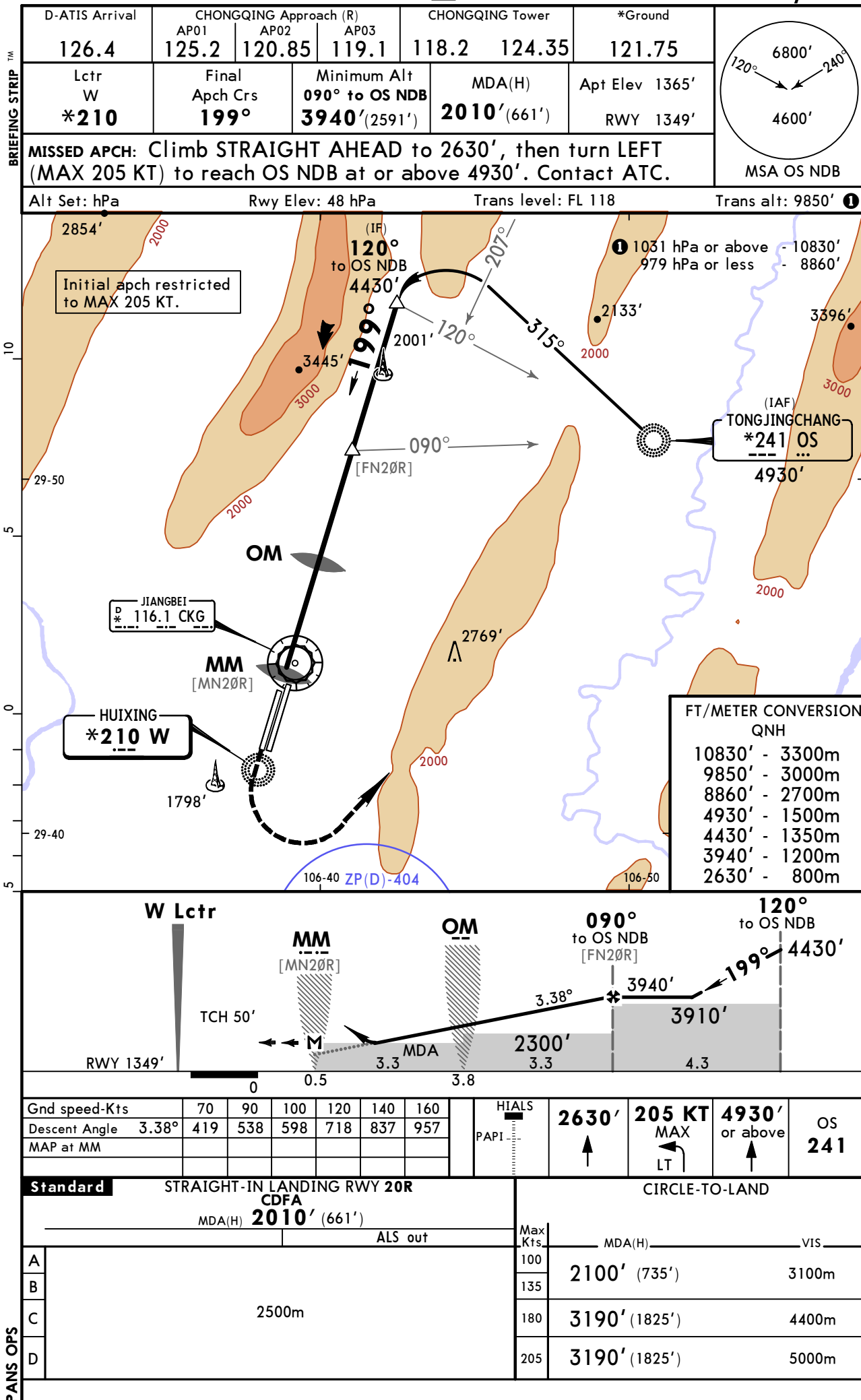


Chart changes since cycle 18-2016

ADD = added chart, REV = revised chart, DEL = deleted chart.

ACT	PROCEDURE IDENT	INDEX	REV DATE	EFF DATE
CHONGQING, (JIANGBEI - ZUCK)				

TERMINAL CHART CHANGE NOTICES

Chart Change Notices for Airport ZUCK

Type: Terminal

Effectivity: Temporary

Begin Date: Immediately

End Date: Until Further Notice

(10-2A, 10-2C, 10-2E) RWY 02R for LOST COM under clarification, CAUTION advised.

Chart Change Notices for Country CHN

Type: Gen Tmnl

Effectivity: Permanent

Begin Date: 20150429

End Date: No end date

At the following airports disregard the note "QNH on req" as QFE is avbl only: ZGNN, ZSQZ, ZSWX, ZYJM, ZYMD, ZYQQ and ZYYJ.