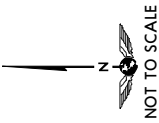
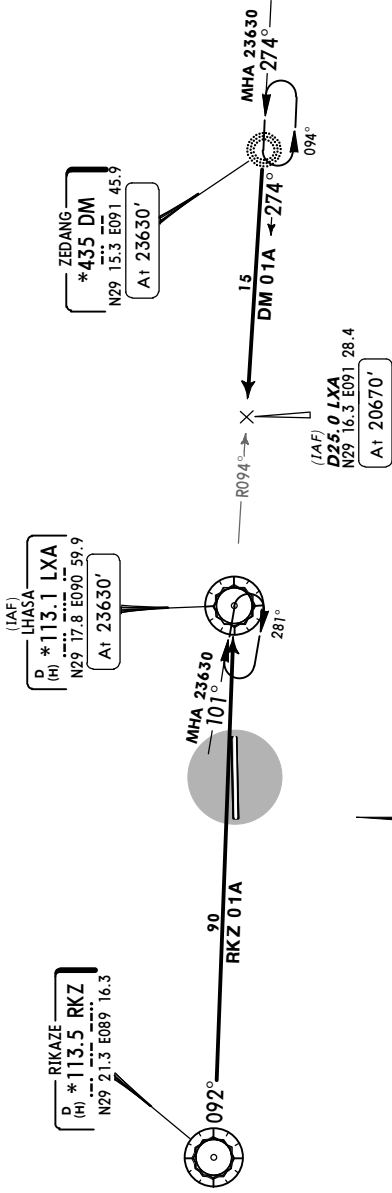
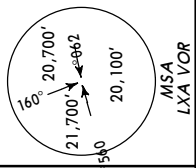


Apt Elev 11713'	Trans level: FL266    Trans alt: 24610'
	25600' 1031 hPa or above 23630' 979 hPa or below

DM 01A, RKZ 01A  
RWY 27R ARRIVALS



FL CONVERSION	FL8100m
FL266	FL8100m
FT/METER CONVERSION	
QNH	
25600'	- 7800m
24610'	- 7500m
23630'	- 7200m
20670'	- 6300m

ZULS/LXA  
GONGGAR

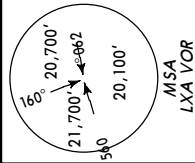
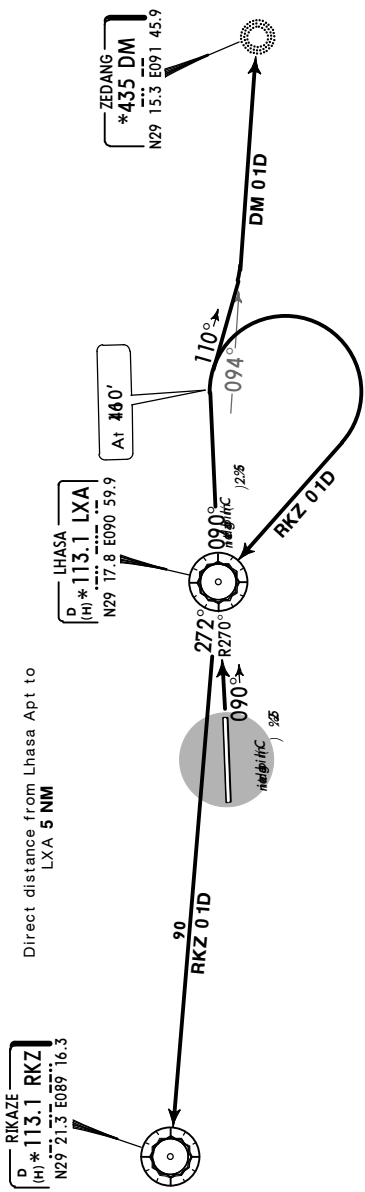
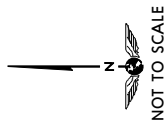
JEPPesen  
4 JAN 13 10-3 Eff 10 Jan

LHASA, PR OF CHINA  
SID

Apt Elev  
11713'

Trans level: FL266    Trans alt: 24610'  
25600' 1031 hPa or above  
23630' 979 hPa or below  
If there is no reliable alternate airport, visibility 8000m.

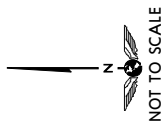
DM 01D, RKZ 01D  
RWY 09L DEPARTURES  
**KEEPS MAX 230 KT**



Gnd speed-KT	75	100	150	200	250	300
5.2% V/V (fpm)	395	527	790	1053	1317	1580

FT/METER CONVERSION QNH	FL CONVERSION FL266 FL8100m
16410' - 5000m	
23630' - 7200m	
24610' - 7500m	
25600' - 7800m	

Trans level: FL266    Trans alt: 24610'  
25600' 1031 hPa or above  
23630' 979 hPa or below  
Weather minima: ceiling 1800m, visibility 8000m.



FT./METER CONVERSION	QNH	FL CONVERSION
13290'	- 4050m	FL266
14770'	- 4500m	FL8100m
18050'	- 5500m	
20670'	- 6300m	
23630'	- 7200m	
24610'	- 7500m	
25600'	- 7800m	





ZULS/LXA  
GONGGAR

JEPPESSEN  
4 JAN 13  
Eff 10 Jan

LHASA, PR OF CHINA  
MISSED APCH CLIMB  
GRADIENT MIN 3.0%  
VOR DME Rwy 27R

LHASA Tower  
118.25

Ground  
121.65

VOR  
LXA  
\*113.1

Final  
Apch Crs  
274°

Procedure Alt  
D15.0  
17560'(5857')

MDA(H)  
14110'(2407')

Apt Elev  
11713'  
RWY 11703'

MISSED APCH: Climb STRAIGHT AHEAD to VOR, then climb on 271° to D8.8 at 15750', then turn RIGHT to VOR above 20670'.  
Contact ATC. MAX 190 KT.

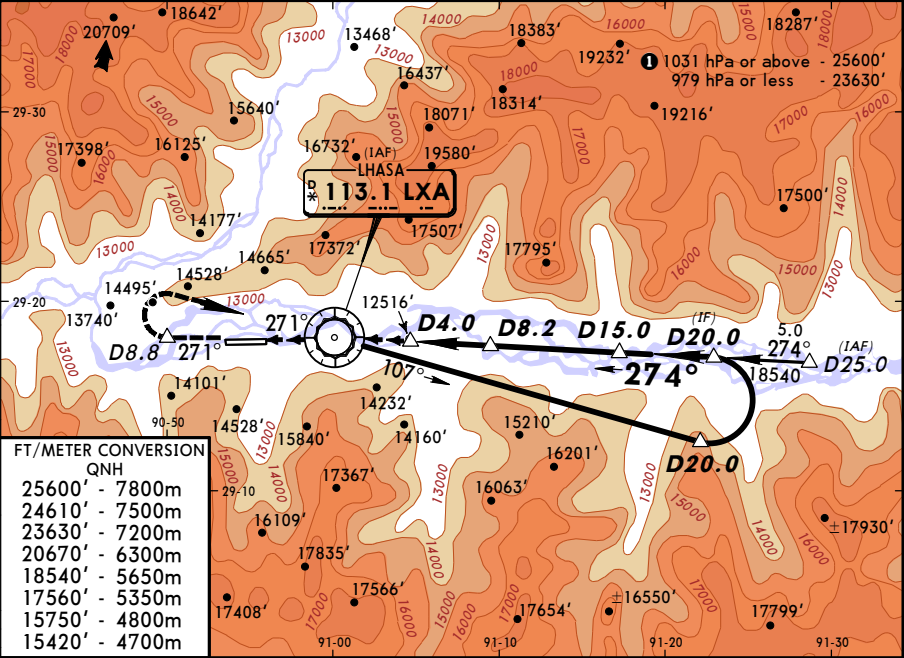
21,700'↖↗20,700'  
↖↗20,100'  
MSA  
LXA VOR

Alt Set: hPa  
Baseturn restricted to MAX 190 KT.

Rwy Elev: 361 hPa

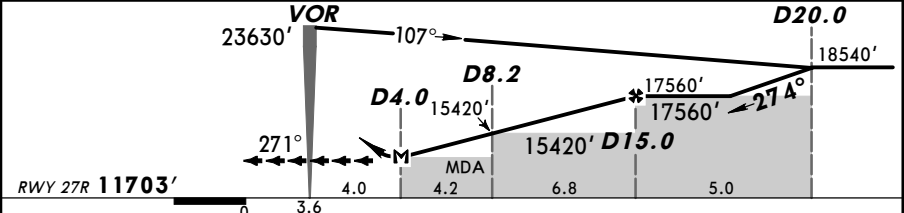
Trans level: FL 266

Trans alt: 24610' ①



FT/METER CONVERSION	
QNH	
25600' - 7800m	
24610' - 7500m	
23630' - 7200m	
20670' - 6300m	
18540' - 5650m	
17560' - 5350m	
15750' - 4800m	
15420' - 4700m	

LXA DME	4.0	6.0	8.0	10.0	12.0	14.0
ALTITUDE	14110'	14730'	15370'	16010'	16640'	17280'



Gnd speed-Kts	70	90	100	120	140	160	<div><div>HIALS</div><div>PAPI</div><div>190 KT MAX</div><div>LXA 113.1 ↑</div><div>15750' LT</div><div>271°</div></div>
Descent angle 3.00°	372	478	531	637	743	849	
MAP at D4.0							

STRAIGHT-IN LANDING RWY 27R  
Missed apch climb gradient min 3.0% up to 15750'

MDA(H) 14110'(2407')

ALS out

PANS OPS

A

B

C

D

8000m

